



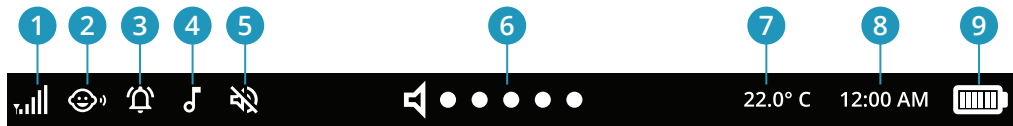
Levana[®]

Mila Video Baby Monitor
Quick Start Guide

Rev.6 20200224

Getting to Know Mila

Notification Bar




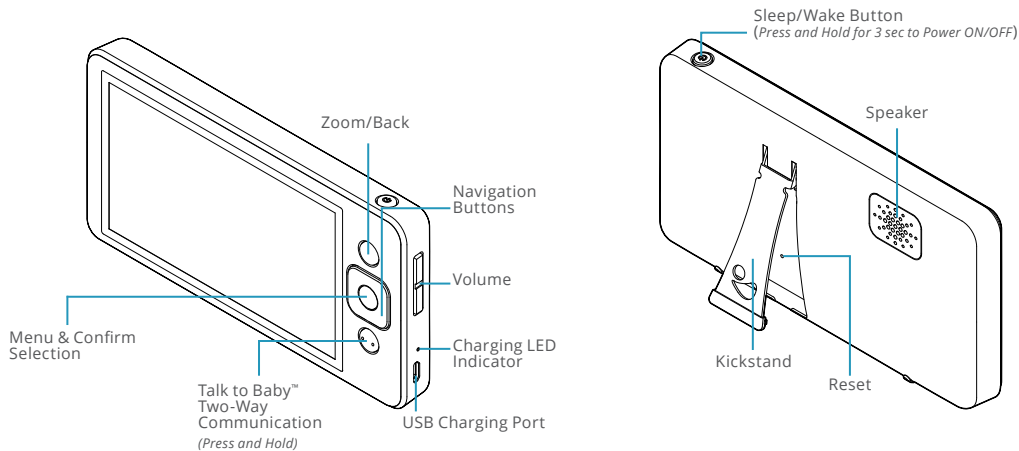
1. Signal Strength
2. Power Save Mode
3. Temperature Alerts (if activated)
4. Active Lullaby Playing
5. Monitor Audio Muted
6. Volume Level (at camera)
7. Temperature (at active camera)
8. Time
9. Battery Level

Getting to Know Mila

Buttons and Functions

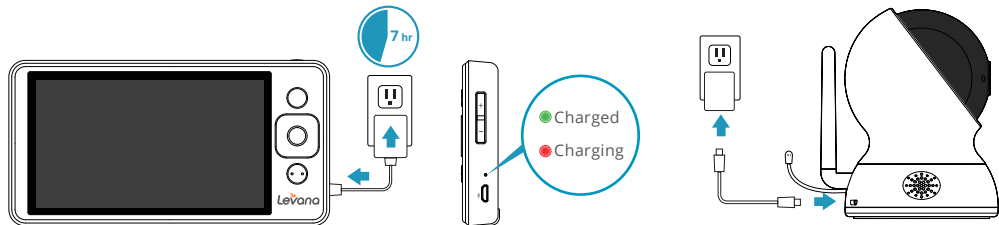


TIP: Press and hold the  button to quickly switch cameras when there are two or more cameras paired to your monitor.



Setting Up Your Mila Baby Monitor

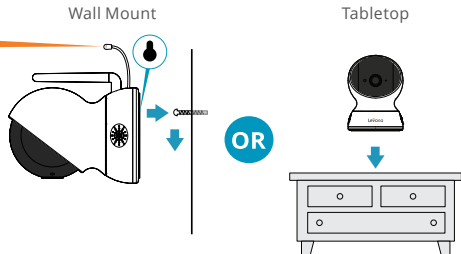
Charge the Monitor for 7 hours and Plug in the Camera



IMPORTANT:

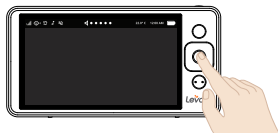
Ensure the camera's temperature sensor is not obstructed.

Power cords should be kept at least **3ft away** from the crib and baby's reach at all times.



Setting Up Your Mila Baby Monitor

Adding/Pairing Additional Cameras



Press the **Menu Button** to access the Device Menu.



Go to **Settings**. Then press the Menu Button to select.



Go to **Camera Pairing**. Press the Menu button to select.



Select a **camera square** with a **(+) icon** to pair a new camera.



Press and hold the **Pair Button** on the bottom of the camera until a beep is heard.



Pairing successful!

TIP: To remove a camera, follow the same steps above, and select a camera with a (-) icon next to it.


Using Your Mila Baby Monitor

Viewing Modes and Switching Cameras

Press the Menu Button, then select Viewing Modes. **Note** that Multi-Screen Views require two or more paired cameras.




Full Screen View

This mode allows you to see one camera in full-screen view. To switch to another paired camera, press and hold .



Multi-Screen Views


Split and Quad modes allow you to see up to 4 cameras at once. The camera view with an orange box around it is the active camera, which means you can pan/tilt/zoom and use Talk-to-Baby on it. Audio you hear on your monitor is from this camera.

To switch to another paired camera, press and hold .



Sequence View

When there are two or more paired cameras, your monitor cycles through each camera every five seconds.

You can switch to another paired camera at any time by pressing and holding .

Using Your Mila Baby Monitor

Lullabies

Press the Menu Button, then select Lullabies and the camera on which you want a lullaby to play. You can play different lullabies on different cameras.



Lullaby

Select between 3 classical lullabies, a nature sound, or white noise.

Voice Activation

When turned ON, your selected lullaby begins playing for five minutes when your child makes noise.

Duration

Select ON to play a lullaby continuously, or use the preset durations to set a custom interval. Preset durations add to the total playback time, so you can create your own custom durations.

Camera Volume

Adjust the volume of your selected camera. This volume level applies for both lullabies and Talk-to-Baby.

Using Your Mila Baby Monitor

Monitor Modes

Press the Menu Button and then select Monitor Mode. Each mode changes the way your monitor works.

Voice Activated

This mode puts your display to sleep and only wakes up your monitor when noise is detected at the camera. You can adjust the sensitivity of the camera microphone.

If 2 or more cameras are paired, your monitor will wake up to the specific camera that detects noise.

Audio Only

This mode turns OFF your display and keeps audio playback from your cameras ON. If you have multiple paired cameras, you'll hear audio from the full screen camera (in Full Screen view) or the camera with an orange box around it (in Multi-Screen views).

In sequence mode, audio from all paired cameras is cycled.

Always On

This mode does not turn OFF your display or audio playback unless you press the Sleep/Wake button.

Your monitor will still remain powered ON, however, and you will receive temperature and low battery alerts.



WARNING

STRANGULATION HAZARD: Children have **STRANGL**ED in cords. Keep this cord out of reach of children (more than 3 ft (0.9 m) away.)



This device complies with part 15 of the FCC Rules. Operation is subject to the following two conditions: (1) This device may not cause harmful interference. (2) This device must accept any interference received, including interference that may cause undesired operation.

IC STATEMENT / DÉCLARATION IC:

This device contains license-exempt transmitter(s)/receiver(s) that comply with Innovation, Science and Economic Development Canada's license-exempt RSS(s). Operation is subject to the following two conditions: (1) This device may not cause interference. (2) This device must accept any interference, including interference that may cause undesired operation of the device.

L'émetteur/récepteur exempt de licence contenu dans le présent appareil est conforme aux CNR d'Innovation, Sciences et Développement économique Canada applicables aux appareils radio exempts de licence. L'exploitation est autorisée aux deux conditions suivantes : (1) L'appareil ne doit pas produire de brouillage; (2) L'appareil doit accepter tout brouillage radioélectrique subi, même si le brouillage est susceptible d'en compromettre le fonctionnement.

This equipment complies with IC RSS-102 radiation exposure limits set forth for an uncontrolled environment. This equipment should be installed and operated with minimum distance 20cm between the radiator and your body.

Cet équipement est conforme aux limites d'exposition aux radiations IC CNR-102 établies pour un environnement non contrôlé. Cet équipement doit être installé et utilisé avec une distance minimale de 20 cm entre le radiateur et votre corps.

Worry Less, Do More.®

Our mission is to bring you the peace of mind you deserve during your parenting journey. If your experience with your monitor is anything short of amazing, we're here to fix that!



mylevana.com/support



mylevana.com/contact



[/mylevana](https://www.facebook.com/mylevana)



[@mylevana](https://www.instagram.com/mylevana)



[/mylevana](https://www.pinterest.com/mylevana)