

FITS

TECHNICAL
EQUESTRIAN
APPAREL

SPRING 2019



SEA BREEZE SHIRTS **new!**

The brand new Dahlia print Sea Breeze shirt combines style and cooling comfort while flattering all body types. Featuring light weight UPF-50 fabric- wicking, fast drying, stretchy breath ability that is odor and pill resistant. Feather weight double layer power mesh side panels and under sleeves.

A522-3 Sea Breeze Short Sleeve \$89

A523-3 Sea Breeze Long Sleeve \$99

XS, S, M, L, XL



New! Dahlia Grey



New! Dahlia Blue



STYLISH

Pretty floral print in 2 different color ways.



TEMPERATURE

Light weight fabric keeps you dry and cool with wicking properties and UPF-50 protection.



BREATHABLE

Power mesh ventilation along your sides and under your arms.



INCLUDES

Front zipper, power mesh panels, flattering seaming for a slimming look, Available in both long and short sleeves.



A522-3 Sea Breeze Short Sleeve

A523-3 Sea Breeze Long Sleeve





HYDRA WATER-PROOF SHOW COAT

new!

The new FITS black Hydra water-proof show coat will keep you dry all year round with fully taped seams, a special self-sealing zipper, 4 black snaps, and a double vented back. Made from a soft shell outer layer- this jacket will shed all dirt, hair, and shavings.

This feminine show coat has zippered vents in the lower sleeve to allow you to easily fit gloves under the cuff and 2 exposed self-sealing zip pockets. The Hydra also features a pretty mesh lining that allows for stretch through the shoulders.

Never let rainy wet weather keep you out of the show ring ever again!

NEW! A809 Hydra Water-Proof Show Coat \$139

S, M, L, XL



WATERPROOF

Taped seams and self-sealing zippers.



STYLISH

Classic black outer shell combined with a mesh lining.



INCLUDES

Zippered vents at the cuff, self-sealing exposed zipper pockets, hidden self-sealing zip front behind 4 black snaps, double back vent.





ZEPHYR SHOW COATS

new!

You'll stay cool, stylish, and professional in the coolest coat on the market.

The black Dressage Zephyr is made from power mesh and features stunning black satin piping. The zipper closure is hidden behind 4 beautiful rhinestone buttons for easy on/off and a little touch of sparkle. The Dressage judge is sure to sit up and take notice when you enter down centerline.

The **NEW** black Zephyr II is made from black power mesh and features beautiful black satin piping. The zipper closure is hidden behind 3 matching black 4-hole buttons. You're sure to win that blue ribbon when you enter the ring in this stunning coat.

Both styles feature two zippered flap pockets, lovely feminine seaming, and a double vented back. Both Zephyrs are machine washable, durable, and easy care, with Spandex for stretchy comfort.

A807 Zephyr Mesh Dressage Show Coat \$299

Black 4 rhinestone button styling and black piping

NEW! A808 Zephyr II Mesh Hunt Show Coat \$299

Black with 3 button styling and black piping

XS, S, M, L, XL



STYLISH

Feminine seaming, piping, and beautiful buttons.



BREATHABLE

Constructed completely of our signature power mesh material.



STRETCHABLE

Power Mesh fabric made with Spandex allows for a lot of stretch. This show coat moves with you, not against you.



EASY CARE

Machine washable.



INCLUDES

Hidden zipper and buttons.
Zippered slash pockets. Back double vents.
Beautiful piping.



A807 Zephyr Mesh Dressage Show Coat



New! A808 Zephyr II Mesh Hunt Show Coat





PERFORMAX® PULL ON FULL SEAT BREECH

This patented groundbreaking, segmented, and perforated leather full seat breech has grip unlike any other and our unique, patented, seamless, gusseted crotch adds comfort where it counts.

The ultimate stretch of our 4-way stretch knit All-Season fabric gives you maximum compression providing unmatched muscle support and complete freedom of motion for better performance, comfort, and mobility.

A power mesh ab-panel provides added core support allowing you to remain stronger longer and allowing a more effective ride.

The pull-on style features a side cargo pocket, big enough to hold your phone or anything else. All colors feature black leather.

A600C PerformMAX Original Full Seat Pull On \$259

XS, S, M, L, XL



A600C Black with Black Leather



A600C Bleu with Black Leather



New! A600C Sombre with Black Leather



GRIP

Perforated, segmented leather panels allow for the perfect amount of grip.



TEMPERATURE

All-Season fabric cools and wicks in summer and warms in winter. **Exceeds UPF-50 for maximum sun protection.**



BREATHABLE

Perforated leather releases heat. All-Season fabric and mesh in the lower leg allow for ventilation.



STRETCHABLE

4-way stretch Lycra® fabric. Segmented, perforated leather seat. Seam free, stretchable, leather free crotch adds comfort where it counts.

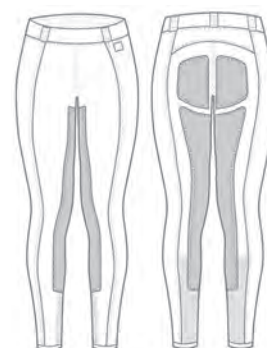


INCLUDES

Cargo pocket.



FITS Patented Crotch Gusset



A600C



PERFORMAX® FRONT-ZIP BREECH

This patented groundbreaking, segmented, and perforated leather full seat breech has grip unlike any other and our unique, patented, seamless, gusseted crotch adds comfort where it counts.

The ultimate stretch of our 4-way stretch knit All-Season fabric gives you maximum compression providing unmatched muscle support and complete freedom of motion for better performance, comfort, and mobility.

A power mesh ab-panel provides added core support allowing you to remain stronger longer and allowing a more effective ride.

Both the White and Sahara front zip breeches feature gorgeous matching leather. All colors feature traditional slash pockets! This breech style is designed with a slightly higher rise so that it can be worn with a show coat or shad belly.

NEW! The White breech is now 10% thicker for fuller coverage!

NEW color Bordeaux features black leather and beautiful metallic silver piping on the slash pockets.

A615C PerformAX Full Seat Front-Zip \$265

XS, S, M, L, XL



A615C Sahara with Sahara Leather



New! A615C White with White Leather



New! A615C Bordeaux with Black Leather and Silver Piping



GRIP

Perforated, segmented leather panels allow for the perfect amount of grip.



TEMPERATURE

All-Season fabric cools and wicks in summer and warms in winter. **Exceeds UPF-50 for maximum sun protection.**



BREATHABLE

Perforated leather releases heat. All-Season fabric and mesh in the lower leg allow for ventilation.



STRETCHABLE

4-way stretch Lycra® fabric. Segmented, perforated leather seat. Seam free, stretchable, leather free crotch adds comfort where it counts.

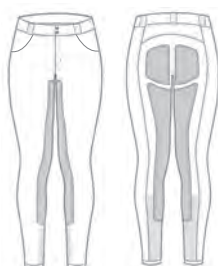


INCLUDES

Zip front, slash pockets. Our new Bordeaux breech features beautiful Silver piping on the two pocket openings.



FITS Patented Crotch Gusset



A615C

A615C

US Patents 7,533,423 & 8,146,176
European Patent 1874143
© FITS Riding Ltd. 2017







TECHTREAD ALL-SEASON LITE FULL SEAT

FITS' breakthrough TechTread innovation maximizes grip where riders need it while minimizing it where they don't.

Inspired by the directionally resistant technology of athletic shoes' soles, FITS TechTread full seat breech gives you an inconspicuous and extremely comfortable edge. Perfected by our ergonomic styling and made possible by advances in garment printing technology- TechTreads must be worn to be believed!

Our All-Season Lite fabric is cooler for warmer conditions.

The easy-care TechTread breech has clean lines and a smooth finish that sheds dirt, hay, and hair. Featuring the popular side cargo pocket for convenient storage.

A632 TechTread Full Seat Breech \$129

XS, S, M, L, XL



Black



New! Ink



New! Bordeaux



GRIP

TechTread facilitates grip where it's most needed.



CLIMATE CONTROL

The All-Season Lite fabric is cooler in warmer conditions.
Exceeds UPF-50 for maximum sun protection.



BREATHABLE

The All-Season Lite fabric wicks away moisture.



STAYS CLEAN

Smooth finish sheds dirt, shavings, and hair.



STRETCHABLE

4-way stretch compression fabric for anti-fatigue support.
Patented, seam free, stretchable crotch adds comfort where it counts.

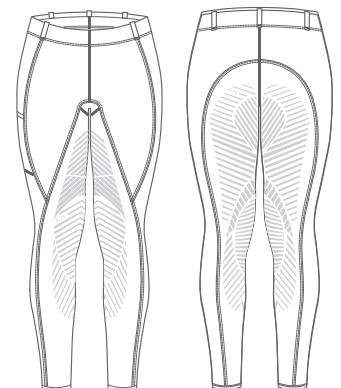


INCLUDES

Easy reach side cargo pocket.



FITS Patented
Crotch Gusset



FREE FLEX

FULL SEAT ZIP FRONT

The FITS Free Flex full seat offers exceptional grip and performance combined with anti-fatigue muscle compression All-season fabric. The clean, traditional, long lines of this full seat are complimented by a gorgeous black yoke and Euro-seat styling.

Our exclusive synthetic "Flex-Leather" looks like leather, has a soft micro-fiber inside finish against your skin, and offers ultimate grip for those who want extra security in the saddle.

The power mesh ab-panel ensures comfortable and slimming core support and the mesh lower leg gives you ventilation while eliminating bulk under your boot.

The Free Flex full seat breech features our unique patented, leather free, stretchable crotch gusset which adds comfort where it counts.

A618B Free Flex Full Seat \$179

XS, S, M, L, XL



Black



New! Sombre



White



GRIP

Flex-Leather synthetic looks like leather and offers ultimate grip for extra security.



TEMPERATURE

All-Season fabric cools and wicks in the summer and warms in the winter and **exceeds UPF-50 for maximum sun protection.**



BREATHABLE

Power mesh lower leg offers great ventilation.



STAYS CLEAN

Smooth finish sheds dirt, shavings and hair.



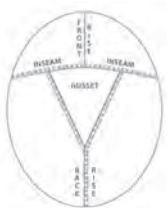
STRETCHABLE

4-way stretch compression fabric. Stretchy full seat. Patented, seam free, stretchable crotch.

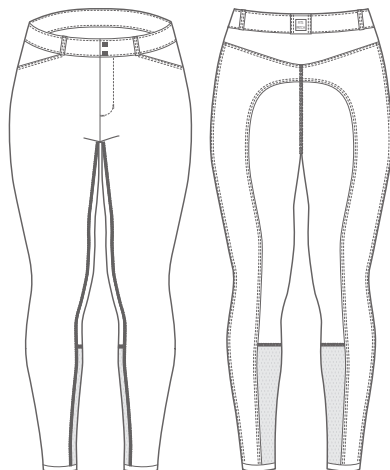


INCLUDES

Front zipper, two front slash pockets.



FITS Patented Crotch Gusset



US patents 7,533,423 and 8,146,176, and European Patent 1874143





OLIVIA FULL SEAT TREAD BREECH

FITS' Olivia Full Seat Tread Breech is the perfect combination of beauty and functionality- this is the breech you've been dreaming of.

Giving you a gorgeous silhouette in the saddle this full seat breech features Euro-seat styling, a front zip closure, two slash pockets and featuring FITS' printed technology silicone grip.

Our patented seamless, gusseted crotch allows you to sit more deeply in the tack with added stretch and comfort. The soft 4-way stretch fabric of these breeches sheds hay and dirt while Spandex in the ankle keeps your legs cool without any extra bulk.

Offered in two lengths- both regular and long which is 2" longer.

A628R/A628L Olivia Full Seat Tread \$199

Sizes: 26R, 28R, 30R, 32R, 34R, 26L, 28L, 30L, 32L, 34L



A628R/A628L
Noir



A628R/A628L
Sombre



COMFORT

The Olivia is made from silky-soft, 72% Nylon blend, 4-way stretch fabric that feels great against your skin and withstands hours in the tack. A Spandex sock bottom allows for less bulk in your boot.



ATHLETIC GUSSET

Our patented gusseted crotch allows you freedom of motion.



GRIP

Silicone tech tread full seat of the Olivia allows for the perfect amount of directional grip.

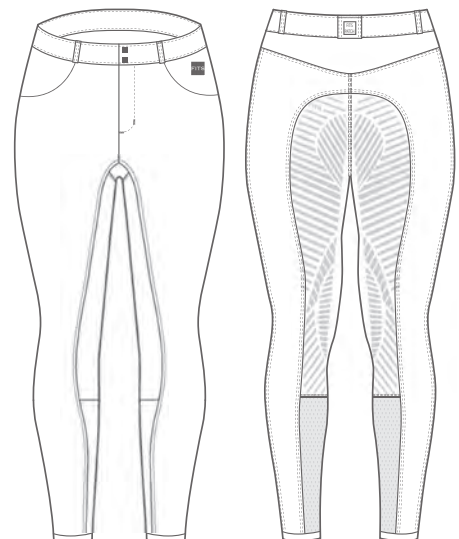


STYLISH

With a Euro-seat, two front slash pockets, and feminine lines- these breeches are classically beautiful.



FITS Patented
Crotch Gusset



A628 Olivia





PIPPA KNEE PATCH BREECH

FITS' Pippa Knee Patch Breech is the perfect combination of beauty and functionality- this is the breech you've been looking for in and out of the saddle.

Giving you a gorgeous silhouette in the tack with a European style fit, this faux suede knee patch breech features a Euro-seat, front zip closure, and two slash pockets.

Our patented seamless, gusseted crotch allows you to sit more deeply in the tack with added stretch and comfort. The soft 4-way stretch fabric of these breeches sheds hay and dirt while Spandex in the ankle keeps your legs cool without any extra bulk.

Offered in two lengths- both regular and long which is 2" longer.

A629R/A629L Pippa Knee Patch Breech \$179

Sizes: 24R (Fawn only), 26R, 28R, 30R, 32R, 34R, 26L, 28L, 30L, 32L, 34L

Colors: Black/Black Patches & Fawn/Buf Patches



Noir/Noir Patches



Fawn/Buf Patches



COMFORT

The Pippa is made from silky-soft, 72% Nylon blend, 4-way stretch fabric that feels great against your skin and withstands hours in the tack. A Spandex sock bottom allows for less bulk in your boot.



ATHLETIC GUSSET

Our patented gusseted crotch allows you freedom of motion.



GRIP

Faux suede knee patches.

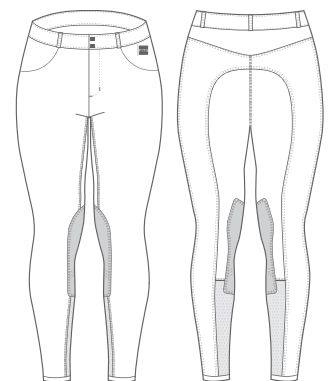


STYLISH

With a Euro-seat, two front slash pockets, and feminine lines- these breeches are classically beautiful.



FITS Patented Crotch Gusset



A629 Pippa





NOVA EXTENDED KNEE PATCH TREAD BREECH

new!

FITS' brand new Nova Extended Knee Patch Tread Breech is the perfect breech to span across several disciplines- enough grip and beauty for Dressage, yet sporty enough for the Jumper ring!

Giving you a gorgeous silhouette in the saddle this extended knee patch tread breech features Euro-seat styling, a front zip closure, two slash pockets, and FITS' printed technology silicone grip.

Our patented seamless, gusseted crotch allows you to sit more deeply in the tack with added stretch and comfort. The soft 4-way stretch fabric of these breeches sheds hay and dirt while Spandex in the ankle keeps your legs cool without any extra bulk.

Offered in two lengths- both regular and long which is 2" longer.

A633R/A633L Nova Extended Knee Patch Tread \$189

Sizes: 24R, 26R, 28R, 30R, 32R, 34R, 26L, 28L, 30L, 32L, 34L
White



COMFORT

The Nova is made from silky-soft, 72% Nylon blend, 4-way stretch fabric that feels great against your skin and withstands hours in the tack. A Spandex sock bottom allows for less bulk in your boot.



ATHLETIC GUSSET

Our patented gusseted crotch allows you freedom of motion.



GRIP

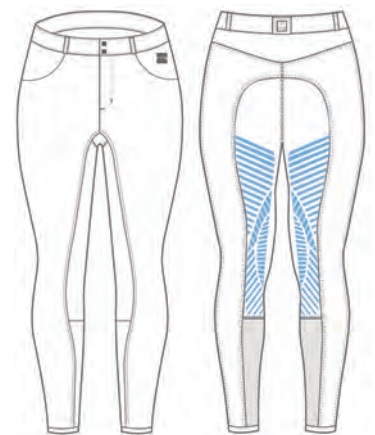
Silicone tech tread extended knee patch of the Nova allows for the perfect amount of directional grip, while ending at a natural point on the body.



STYLISH

With a Euro-seat, two front slash pockets, and feminine lines- these breeches are classically beautiful.

Extended Knee Patch Tread for Multiple Disciplines



A633 Nova
Blue represents the Grip



FITS Patented
crotch Gusset



WUNDERBREECH™

RIDING UNDERWEAR

Cotton, poly and Lycra® highly opaque body smoother helps fill cellulite lines and cover skin blemishes. Seamless, gusseted crotch and Capri-length for maximum comfort. Also makes a great base layer for colder weather.

A409 Wunderbreech™ \$39

XS, S, M, L, XL



White



Beige



WOMEN'S BREECHES

A600C PERFORMAX™ ORIGINAL UPDATED FULL SEAT PULL ON \$259



A615C PERFORMAX UPDATED ZIP FRONT \$265



A618B FREE FLEX FULL SEAT ZIP FRONT \$179



A632 TECHTREAD AS LITE FULL SEAT PULL ON \$129



A628 OLIVIA FULL SEAT TREAD \$199



A629 PIPPA KNEE PATCH TREAD \$179



A633 NOVA EXTENDED KNEE PATCH TREAD \$189



WOMEN'S SIZING

WOMENS	US SIZES	EU SIZES	WAIST	HIPS	BUST
XS	0-2	30-32	25-26" 63.5-66cm	34-35" 86-90cm	31-32" 79-82cm
S	4-6	34-36	26-28" 66-71cm	36-37" 91-95cm	33-34" 83-87cm
M	8-10	38-40	28-30" 71-76cm	38-39" 96-100cm	35-36" 88-92cm
L	12-14	42-44	30-32" 76-81cm	40-42" 101-107cm	37-39" 93-99cm
XL	16-18	46-48	32-34" 81-86cm	43-45" 108-114cm	40-42" 100-107cm

FABRIC CARE

PerforMAX Breeches:

Machine wash separately cold. Delicate cycle. Use Leather Therapy® gentle laundry soap. Remove promptly from washer and lay flat or hang to dry (out of the heat or sun). **Do not bleach or dry clean. Do not use fabric softener. Do not use Oxiclean.**

Olivia, Pippa and Ava Breeches:

Machine wash cold, inside out. Do not bleach. Do not tumble dry. Do not dry clean. Do not iron on printed area. **Do not use Oxiclean.**

Free Flex Breeches:

Machine wash. Gentle cycle. Mild laundry detergent. Hang or tumble dry on low heat. **Do not use bleach or fabric softeners. Do not use Oxiclean.**

SHIRTS & COATS

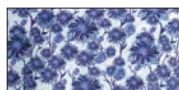
New! A522-3 SEA BREEZE SHORT SLEEVE SHIRTS \$89



New! A522-3 Dahlia Gray



New! Dahlia Gray



New! Dahlia Blue

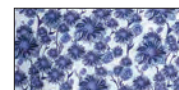
New! A523-3 SEA BREEZE LONG SLEEVE SHIRTS \$99



New! A523-3 Dahlia Blue



New! Dahlia Gray



New! Dahlia Blue

A807 / A808 ZEPHYR SHOW COATS \$299

A807 Zephyr Mesh Dressage Show Coat



Black with 4-Rhinestone Button Styling & Front Zipper

A808 Zephyr II Mesh Hunt Show Coat



New! Black with Classic 3-Button Styling, Front Zipper, Back Piping

A409 WUNDERBREECH™ RIDING UNDERWEAR \$39

See womens sizing chart



A409 White



A409 Beige

New! A809 HYDRA RAIN SHOW COAT \$139



Tread Breeches:

Machine wash warm. Wash Inside Out. Do not bleach. Do not tumble dry. Do not dry clean. Iron on low heat. **Do not iron on printed area. Do not use Oxiclean.**

Zephyr Show Coats:

Machine wash delicate. Hang to dry (out of sun) **Do not use Oxiclean.**

Shirts:

Machine wash warm. Gentle Cycle. Hang or tumble dry low. Cool iron if necessary. **Do not bleach or dry clean. Do not use fabric softener. Do not use Oxiclean.**

ORDER NOW

Phone: 888.360.FITS (3487) USA & Canada only

803.226.0195 International

Fax: 888.844.7007 USA & Canada only

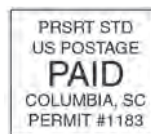
Email: info@FITSriding.com

Online: www.FITSriding.com

FITS



FITS Riding Ltd
111 Warehouse Road
Aiken, SC 29801



FITS PROMOTES EQUESTRIAN RIDING THROUGHOUT THE WORLD AND IS A PROUD SPONSOR OF:

Thank you to Andrea Cerofolini for providing his beautiful Equestrian Resort in Ridge Spring (near Aiken), SC for our Spring 2019 photo shoot. Magnolia Shadows offers horse boarding, training, bed & breakfast and restaurant services.

- US Eventing Association's American Eventing Championships (AEC)
- US Eventing Association's Adult Team Championships (ATC)
- US Eventing Association's Gold Cup Series
- FITS Professional Riders competing throughout the world.
- USHJA's International Hunter Derby Championship
- USHJA's Green Incentive Championship
- USHJA's World Championship Hunter Rider Spectacular
- USHJA's World Championship Hunter Rider Challenge
- USHJA's Children's/Adult Amateur Hunter Individual Regional Championships
- USHJA's National Championship



WANT TO BE A RETAILER? CALL US!

888.360.3487 | 803.226.0195 | Fax 888.844.7007

Email: info@FITSriding.com

WWW.FITSriding.com