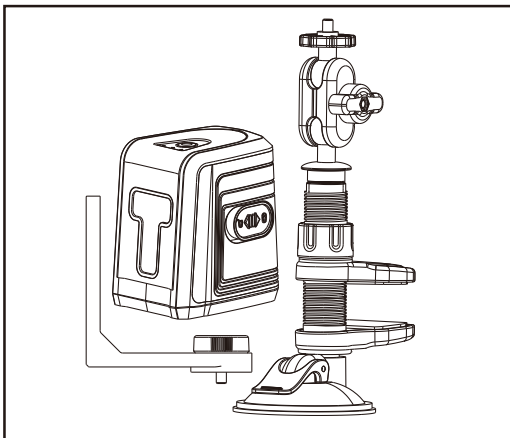




**Self-leveling
Cross-Line Laser
(MH-02-CL-B1-23-1)**



Customer Service

Phone # 1-866-608-5212

E-Mail: support@motorheadtool.com

Register your tool on MOTORHEADTOOL.COM for a Free
Extended Warranty!

Table Of Contents

Index of Contents.....	2
Specifications.....	3
General Safety Instructions.....	3 - 4
Operating Instructions.....	5 - 7
Illustration and Parts Description.....	8
Warranty.....	9 - 10



WARNING



READ MANUAL &
SAFETY INSTRUCTIONS
BEFORE USE



EYE
PROTECTION
REQUIRED



CAUTION
HEAT
HAZARD



DON'T
SHOOT STRAIGHT
INTO EYE



Specifications

Manufacturers Reference Number	MH-02-CL-B1-23-1
Batteries Includes	2x AA(2X1.5V)
Showdown Current	<50U
Working Current	80mA
Working Temperature	14°F to 122°F -10°C to 50°C
Dimensions(without stents)	2.4in x 2.8in x 3.3in (61mm x 71mm x 84mm)

To get the most out of your new Self Leveling Laser, please read through this manual and safety instructions before use. Please also save the instructions in case you need to refer to them at a later date.

General Safety Instructions

⚠ WARNING: Read and understand all instructions. Failure to follow all instructions listed below may result in electric shock, fire and/or serious personal injury.

READ ALL INSTRUCTIONS



KNOW YOUR POWER TOOL Read the operator's manual carefully. Learn the applications and limitations as well as specific potential hazards related to this tool .

GUARD AGAINST ELECTRICAL SHOCK BY PREVENTING BODY CONTACT WITH GROUNDED SURFACES

For example: pipes, radiators, ranges, refrigerator enclosures.

KEEP GUARDS IN PLACE and in working order.

REMOVE ADJUSTING KEYS AND WRENCHES

Form a habit of checking to see keys and adjusting wrenches are removed from the tool before turning it on.

KEEP THE WORK AREA CLEAN

Cluttered work areas and work benches invite accidents. **DO NOT** leave tools or pieces of wood on the tool while it is in operation

DO NOT USE IN DANGEROUS ENVIRONMENTS

DO NOT use power tools in damp or wet locations or expose them to rain. Keep the work area well lit.

KEEP CHILDREN AND VISITORS AWAY

All visitors should wear safety glasses and be kept a safe distance from work area. Do not let visitors handle tools or extension cords while operating.

MAKE WORKSHOPS CHILDPROOF

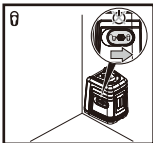
By removing switch keys, unplugging tools from the electrical receptacles, and using padlocks.

DON'T FORCE THE TOOL

It will do the job better and safer at the rate for which it was designed.

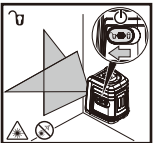
Operating Instructions

Option 1 - Locked



Switch the laser into the 'locked' position. In this position, the laser will not self-level. Press the red power button on the top of the unit to turn the lasers on. One click shows both horizontal and vertical lasers. A second click shows just the horizontal laser. A third click shows just a vertical laser. A fourth click powers the unit off.

Option 2 - Unlocked



Switch the laser into the 'unlocked' position. In this position, the laser will self-level. The unit will also turn itself on when switched to unlocked mode, showing both horizontal and vertical lasers. One click of the power button will show just the horizontal laser. A second click will show just the vertical laser. A third click will start the cycle again with a horizontal and vertical laser.

LED-RED



LED indicator flashes red when the mounting angle is $>5^\circ$. The LED light will continue to turn from green to red if the mounting angle is $>5^\circ$.

LED-GREEN



Auto leveling - When the reference surface is $<5^\circ$, LED will illuminate green, no further adjustments needed.

Universal Stand - Clamp Cup



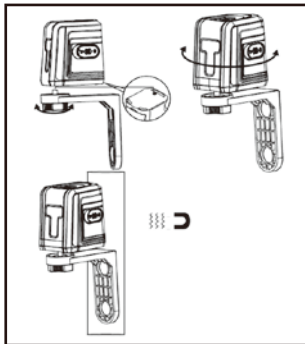
To use the clamp, place the jaws around the edge of your worktop and screw the yellow collar to tighten.

Universal stand - Soft suction Base



Suction cup can only be used to affix the mount to a smooth surface, e.g: Glass, smooth countertop

“L” Stand Use



Make sure the laser screw hole is aligned with stand screw arbor and ensure the laser direction is correct, rotate the stand knob and the laser will be fully assembled with stand.

The magnets in the stand will now allow the laser to attach to a metal plane.

Self-leveling Cross-Line Laser (MH-02-CL-B1-23-1)



Illustration and Parts Description

- Laser Line
- ⊕ Laser cross
 - ⊖ Horizontal laser line
 - ⊙ Vertical laser line

Power Switch

Universal Rod with 360
Rotation





Two-Year Limited Warranty

MOTORHEAD warrants its electronic measuring tools against deficiencies in materials and /or workmanship for two years from date of purchase WITH PROOF of SALE.

This Warranty does not cover deficiencies caused by accidental damage, wear and tear, use other than in accordance with the manufacturer's instructions or repair or alteration of this product not authorized by MOTORHEAD.

Repair or replacement under this Warranty does not affect the expiry date of the Warranty. To the extent permitted by law, MOTORHEAD shall not be liable under this Warranty for indirect or consequential loss resulting from deficiencies in this product. This Warranty may not be varied without the authorization of MOTORHEAD.

This Warranty does not affect the statutory rights of consumer purchasers of this product. This Warranty shall be governed by and construed in accordance with the laws of the country sold where in and MOTORHEAD and the purchaser each irrevocably agrees to submit to the exclusive jurisdiction of the courts of that country over any claim or matter arising under or in connection with this Warranty.

For warranty service please call MOTORHEAD Customer Service at **1-866-608-5212** or e-mail **support@motorheadtool.com**.

Register your product at **MOTORHEADTOOL.COM** for a **free extended warranty** and additional offers!

Self-leveling Cross-Line Laser (MH-02-CL-B1-23-1)



WARNING: For adult use only. This product is not a toy. Keep out of reach of children.

WARNING: For adult use only. Not for children 17 years of age or younger.

WARNING: Wear safety goggles-user and bystander.

CAUTION

LASER RADIATION, DO NOT STARE INTO BEAM.

WARNING: LASER LIGHT. LASER RADIATION. Avoid direct eye exposure.

Do not stare into beam. Only turn laser beam on when needed.
Class 2 Laser Product.

CAUTION:

Do not mix old and new batteries.

Do not mix alkaline, standard (carbon-zinc), or rechargeable (nickel-cadmium) batteries.

Caution - use of controls or adjustments or performance of procedures other than those specified herein may result in hazardous radiation exposure

⚠️ WARNING: This product can expose you to chemicals including lead and lead compounds, Di(2-ethylhexyl)phthalate (DEHP), which are known to the State of California to cause cancer, and chemicals including Di-n-butyl Phthalate (DBP), which are known to the State of California to cause birth defects or other reproductive harm.

For more information go to www.P65Warnings.ca.gov.

Customer Service: 1-866-608-5212

Monday - Friday

8:00 AM - 8:00 PM EST

support@motorheadtool.com