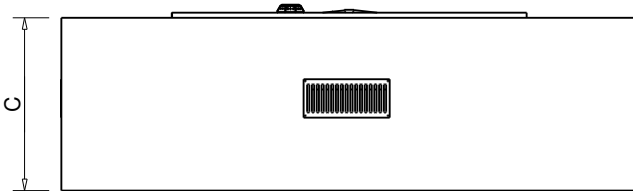
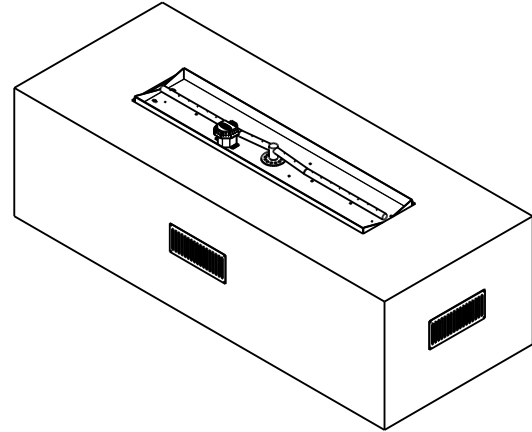
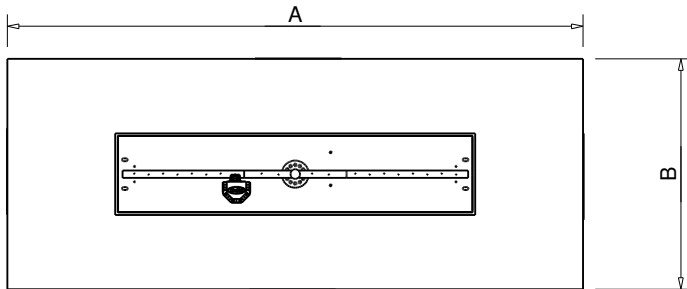
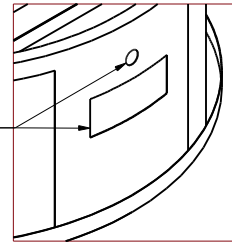




**Hearth Products Controls Co**  
**FIRE PIT INSERT CSA CERTIFIED-OUTDOOR USE ONLY**  
**FOR COMMERCIAL AND RESIDENTIAL USE**



FRAME IS PRE-CUT FOR FPPK OR MLFPK BUT NOT HARDIBOARD



ELECTRONIC IGNITION (EI)						
PART NUMBERS	STND BTU	DIMENSION CHART			POWER	INSERT
		A"	B"	C"		
U60X24/37X8CEK	75K	60	24	18	120VAC OR 24VAC	37X8SSEI-L
U60X24/49X8CEK	100K	60	24	18	120VAC OR 24VAC	49X8SSEI-L
PUSH BUTTON/FLAME SENSING (FPPK)						
PART NUMBERS	STND BTU	DIMENSION CHART			POWER	INSERT
		A"	B"	C"		
U60X24/37X8FPPKCEK	75K	60	24	18	AA BATTERY	FPPK37X8-L
U60X24/49X8FPPKCEK	90K	60	24	18	AA BATTERY	FPPK49X8-L
MATCH LIT (MLFPK)						
PART NUMBERS	STND BTU	DIMENSION CHART			POWER	INSERT
		A"	B"	C"		
U60X24/37X8MLFPKCEK	65K	60	24	18	-	MLFPK37X8-L
U60X24/49X8MLFPKCEK	65K	60	24	18	-	MLFPK49X8-L

**EI MODELS INCLUDE:** ENCLOSURE, FULLY ASSEMBLED INSERT, INPUT FLEX LINE AND INSTRUCTIONS

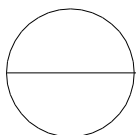
**FPPK MODELS INCLUDE:** ENCLOSURE, FULLY ASSEMBLED INSERT, MOUNTING SLEEVE AND INSTRUCTIONS

**MLFPK MODELS INCLUDE:** ENCLOSURE, FULLY ASSEMBLED INSERT AND INSTRUCTIONS

**INSERT:** 37" X 8" OR 49" X 8"

**Notes:**

1. CONSTRUCTION - 22 GAUGE GALVANIZED STEEL WELDED FRAME AND 1/2" HARDIBOARD SHELL AND WEIGHS 150 LBS.
2. ALL ENCLOSURES INCLUDE REQUIRED 4 each 18 SQ/IN VENTS ON OPPOSING SIDES. ADEQUATE DRAINAGE IS NEEDED.
2. FOLLOW ALL MANUFACTURER INSTALLATION INSTRUCTIONS AND LOCAL CODES.
3. ALL DIMENSIONS ARE CONSIDERED TRUE AND REFLECT MANUFACTURER'S SPECIFICATIONS AS OF THE REVISION DATE.
4. DO NOT SCALE DRAWING.
5. THESE DRAWINGS ARE FOR SIZING AND PLANNING PURPOSES. ALL INFORMATION CONTAINED HEREIN WAS CURRENT AT THE TIME OF DEVELOPMENT. THE MANUFACTURER'S RESPONSIBLE FOR THE ACCURACY OF THE DRAWING.
6. CONTRACTOR'S NOTE: FOR PRODUCT AND COMPANY INFORMATION VISIT [www.CADdetails.com/info](http://www.CADdetails.com/info) REFERENCE NUMBER 771-066.



**READY TO FINISH SERIES**  
**RECTANGLE BURNER ENCLOSURE - INTERLINK BURNER INSERT**