



GRILLS

Manufactured by ProFire
A Division of Modern Home Products

**QUALITY ACCESSORIES
DESIGNED TO ENHANCE
YOUR GRILLING EXPERIENCE**



Ribbed Side ▲

REVERSIBLE

▼ Smooth Side



SearMagic® COOKING GRIDS

Patented

SDGRIDS

8" x 16-3/8"

This unique grid is designed to be placed on top of your existing cooking grid. It heats up faster and cooks all foods at a uniform temperature. Use the wide-ribbed side for larger items, branding them with sear lines and locking in flavorful juices. Use the flip side, with its smooth surface, for grilling delicate foods.

SearMagic® INFRARED SIDE GRILL

Patented

PFMGSEAR (propane or natural gas)

This optional stainless steel unit has a rust-free, anodized aluminum SearMagic® cooking grid that heats up faster and cooks foods at a uniform temperature. The reversible grid provides increased cooking versatility allowing you to cook a greater variety of foods. The electronic ignition ensures easy and reliable starts while the pull-out drip tray allows for easy cleaning.

*Available on all current Phoenix Grill models with stainless steel shelves.
Will not work on old style PFMGBFAB Grills with nu-stone shelves.*



GRILLS

PERFORMANCE YOU CAN RELY ON BACKED BY QUALITY CONSTRUCTION

Grills | Roasts | Steams | Smokes



MID-LENGTH GRILL COVER

GGCVPREM

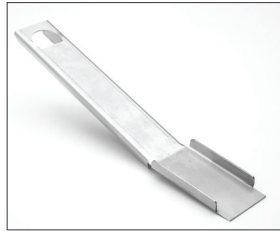
Premium quality polyester lined vinyl cover with E-Z on/off Velcro tabs. Fits Phoenix grill with two side shelves. 60" left to right, 20" front to back, 24" top to bottom



FULL-LENGTH GRILL COVER

CV4PREM

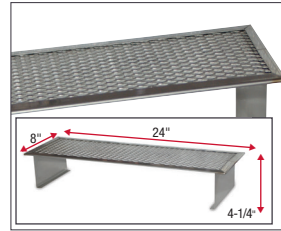
Premium quality polyester lined cover with E-Z on/off Velcro tabs. Fits Phoenix Grill with two shelves and other large grills. Full-length.



DRIP PAN SCRAPER

SDDPS

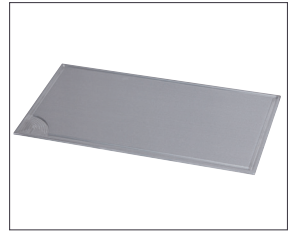
Stainless Steel scraper for Phoenix and Holland drip trays.



STAINLESS STEEL SECONDARY COOKING SURFACE/WARMING RACK

SDSCS

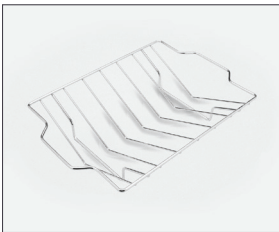
More than a typical warming rack. This elevated surface cooks at lower temperatures for added flexibility! 24" W x 8" D x 4-1/4" H.



GRIDDLE

SDAG

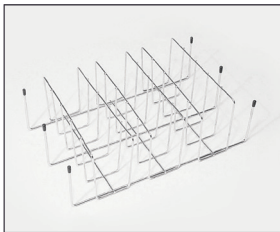
Heavy aluminum griddle. Perfect for breakfast, french toast, eggs, bacon, etc. 16" x 12".



ROAST HOLDER

RR3

This holder is an ideal way to cook and also carry a roast from the grill. Made of heavy, bright nickel-plated steel. crusty pizza every time. Can also be used for grilling meats, poultry, fish and vegetables.



RIB/POTATO RACK

RR2

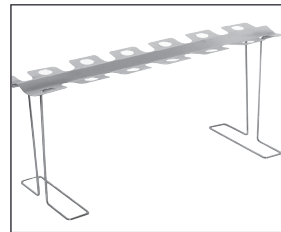
Nickel plated rib/potato rack holds up to 6 racks of ribs and 6 potatoes. Fits all grills. 12" x 7-1/4"



BEER CAN CHICKEN ROASTER

CCR

Beverage can will easily fit inside the can support ring. Nickel plated.



CHICKEN LEG AND WING RACK

CLWR

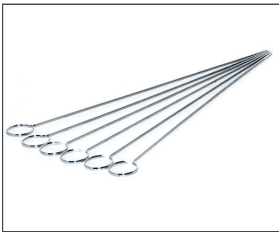
Vertical stainless steel chicken and wing rack.



JALAPENO PEPPER TRAY

JPT

Stainless steel. 11-1/4" x 6" 9" L x 3-3/4" W x 1-1/2" D.



6 PIECE SKEWER

SR7B

Great for making kabobs on the grill. Made of durable stainless steel. Set of 6 skewers is perfect for entertaining.



STAINLESS STEEL SMOKER BOX

SSST

Stainless steel smoker box with cover. For use with all grills. Insert moistened wood chips (not included) for your favorite smoke flavor. 24" W x 8" D x 4-1/4" H.



CURVED SPATULA

SF1

Long stainless steel super filler. Curved design for perfect flips every time! 9" L x 3-3/4" W x 1-1/2" D.



FISH SPATULA

FS1

Stainless steel fish spatula with genuine rosewood handle. 18-1/2" L. 10" spatula width. 60" left to right; 20" front to back; 42" top to bottom.