

Large Diameter Chimney System



The Selkirk Large Diameter Chimney is a perfect fit for large custom masonry fireplaces. Selkirk offers the best selection of large diameter chimney pipe in the industry: 16" to 24" (20", 22", 24" available special order).

FEATURES

- **Ultra-Temp:** 16" to 24" I.D.
- **Galva-Temp:** 16" to 24" I.D.



LARGE DIAMETER CHIMNEY

The Better Chimney for Big Fireplaces.



Selkirk® Large Diameter Chimney is the perfect fit for large custom masonry fireplaces. Selkirk offers the best selection of large diameter chimney pipe in the industry – 16 to 24 inch (20", 22", 24" available special order).

With its stainless steel inner pipe, 1-inch premium insulation and durable galvanized (stainless steel special order) outer pipe, our chimney system is *"the coolest under the hottest conditions."*

Listed with Underwriters Laboratories, Inc. for gas, wood and liquid-fired appliances, the Selkirk® Large Diameter Chimney is backed by a lifetime warranty, the best in the industry.



16" – 24" DIAMETERS

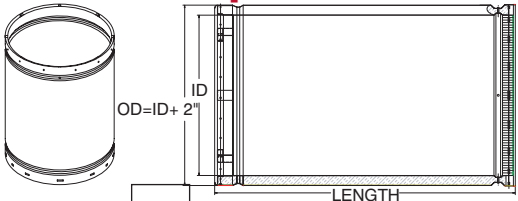
Notes for Ultra-Temp & Galva-Temp:

- 20, 22 and 24 inch Chimney products in galvanized and stainless steel are available by Special Order - allow four weeks.
- 16 and 18 inch stainless steel lengths, and elbows are available by Special Order - allow four weeks.

Large Diameter Lengths, Galvanized Galva-Temp®

NOTE: OD = ID + 2"

Installed length is less 1 1/2" per joint



Dia.	Product No.	Part No.	Lengths
16"	216036G	16GT-36	36"
	216024G	16GT-24	24"
	216018G	16GT-18	18"
	216012G	16GT-12	12"
	216006G	16GT-6	6"

Dia.	Product No.	Part No.	Lengths
18"	218036G	18GT-36	36"
	218024G	18GT-24	24"
	218018G	18GT-18	18"
	218012G	18GT-12	12"
	218006G	18GT-6	6"

Dia.	Product No.	Part No.	Lengths
20"	220036G	20GT-36	36"
	220024G	20GT-24	24"
	220018G	20GT-18	18"
	220012G	20GT-12	12"
	220006G	20GT-6	6"

Dia.	Product No.	Part No.	Lengths
22"	222036G	22GT-36	36"
	222024G	22GT-24	24"
	222018G	22GT-18	18"
	222012G	22GT-12	12"
	222006G	22GT-6	6"

Dia.	Product No.	Part No.	Lengths
24"	224036G	24GT-36	36"
	224024G	24GT-24	24"
	224018G	24GT-18	18"
	224012G	24GT-12	12"
	224006G	24GT-6	6"

Large Diameter Lengths, Stainless Steel Ultra-Temp®



Dia.	Product No.	Part No.	Lengths
16"	216036U	16UT-36	36"
	216024U	16UT-24	24"
	216018U	16UT-18	18"
	216012U	16UT-12	12"
	216006U	16UT-6	6"

Dia.	Product No.	Part No.	Lengths
18"	218036U	18UT-36	36"
	218024U	18UT-24	24"
	218018U	18UT-18	18"
	218012U	18UT-12	12"
	218006U	18UT-6	6"

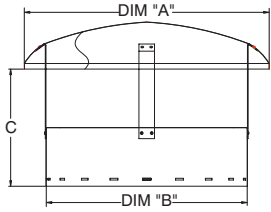
Dia.	Product No.	Part No.	Lengths
20"	220036U	20UT-36	36"
	220024U	20UT-24	24"
	220018U	20UT-18	18"
	220012U	20UT-12	12"
	220006U	20UT-6	6"

Dia.	Product No.	Part No.	Lengths
22"	222036U	22UT-36	36"
	222024U	22UT-24	24"
	222018U	22UT-18	18"
	222012U	22UT-12	12"
	222006U	22UT-6	6"

Dia.	Product No.	Part No.	Lengths
24"	224036U	24UT-36	36"
	224024U	24UT-24	24"
	224018U	24UT-18	18"
	224012U	24UT-12	12"
	224006U	24UT-6	6"

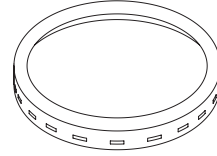
LARGE DIAMETER CHIMNEY

Round Top w/ Spark Arrestor



Dia.	Product No.	Part No.	A	B	C
16"	216804	16S-EZCT/S	24"	18"	14 ¹¹ / ₄₄ "
18"	218804	18S-EZCT/S	24"	20"	14 ¹¹ / ₄₄ "
20"	220804	20S-EZCT/S	28"	22"	15 ¹¹ / ₄₄ "
22"	222804	22S-EZCT/S	32"	24"	17 ¹¹ / ₄₄ "
24"	224804	24S-EZCT/S	32"	26"	17 ¹¹ / ₄₄ "

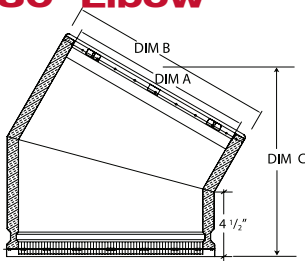
Closure Ring



Required to cover the insulation at the top of the chimney if any termination other than Selkirk Round Top is used.

Dia.	Product No.	Part No.
16"	216807	16S-CR
18"	218807	18S-CR
20"	220807	20S-CR
22"	222807	22S-CR
24"	224807	24S-CR

30° Elbow



Galva-Temp®

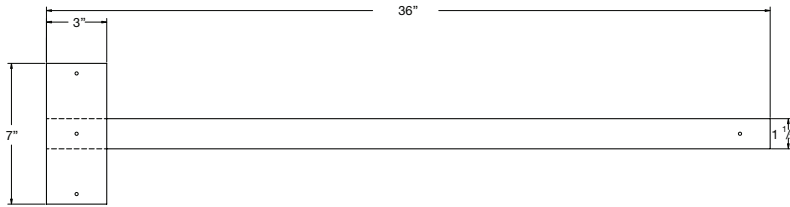
Dia.	Product No.	Part No.	A	B	C
16"	216210G	16GT-EL30	16"	18"	12.9"
18"	218210G	18GT-EL30	18"	20"	13.4"
20"	220210G	20GT-EL30	20"	22"	13.9"
22"	222210G	22GT-EL30	22"	24"	14.4"
24"	224210G	24GT-EL30	24"	26"	15.9"

Ultra-Temp®

Dia.	Product No.	Part No.	A	B	C
16"	216210U	16UT-EL30	16"	18"	12.9"
18"	218210U	18UT-EL30	18"	20"	13.4"
20"	220210U	20UT-EL30	20"	22"	13.9"
22"	222210U	22UT-EL30	22"	24"	14.4"
24"	224210U	24UT-EL30	24"	26"	15.9"

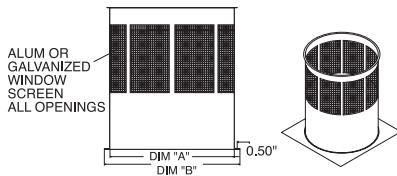
NOTE: Installed length is ³/₄" less than "C" dimension.

Interior Resupport



Dia.	Product No.	Part No.
16"	216435	16S-IR
18"	218435	18S-IR
20"	220435	20S-IR
22"	222435	22S-IR
24"	224435	24S-IR

Attic Insulation Shield



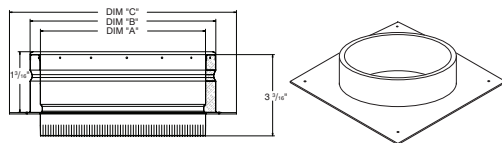
Dia.	Product No.	Part No.	A	B
16"	216490	16S-AIS	22"	24"
18"	218490	18S-AIS	24"	26"
20"	220490	20S-AIS	26"	28"
22"	222490	22S-AIS	28"	30"
24"	224490	24S-AIS	30"	32"

Anchor Plate with Damper



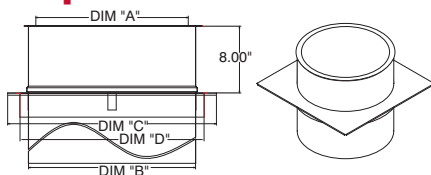
Dia.	Product No.	Part No.	A	B	C
16"	216404	16GT-APD	16"	18"	22"
18"	218404	18GT-APD	18"	20"	24"
20"	220404	20GT-APD	20"	22"	26"
22"	222404	22GT-APD	22"	24"	28"
24"	224404	24GT-APD	24"	26"	30"

Anchor Plate - Now only 1³/₁₆" high



Dia.	Product No.	Part No.	A	B	C
16"	216400	16GT-AP	16"	18"	22"
18"	218400	18GT-AP	18"	20"	24"
20"	220400	20GT-AP	20"	22"	26"
22"	222400	22GT-AP	22"	24"	28"
24"	224400	24GT-AP	24"	26"	30"

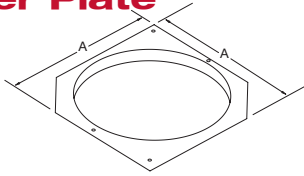
Firestop/Joist Shield



Dia.	Product No.	Part No.	A	B	C	D
16"	216465	16S-JS	18.13"	20"	25"	22"
18"	218465	18S-JS	20.13"	22"	27"	24"
20"	220465	20S-JS	22.13"	24"	29"	26"
22"	222465	22S-JS	24.13"	26"	31"	28"
24"	224465	24S-JS	26.13"	28"	33"	30"

LARGE DIAMETER CHIMNEY

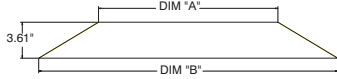
Stabilizer Plate



Provides lateral support for a vertical chimney only.
Is NOT a firestop.

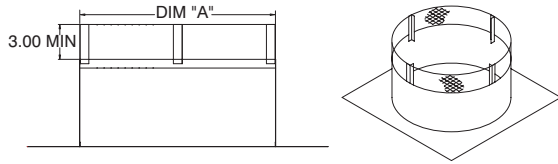
Dia.	Product No.	Part No.	A
16"	216405	16S-SP	25"
18"	218405	18S-SP	27"
20"	220405	20S-SP	29"
22"	222405	22S-SP	31"
24"	224405	24S-SP	33"

Storm Collar



Dia.	Product No.	Part No.	A	B
16"	216810	16S-SC	18"	30"
18"	218810	18S-SC	20"	32"
20"	220810	20S-SC	22"	34"
22"	222810	22S-SC	24"	36"
24"	224810	24S-SC	26"	38"

Flat and Low Pitch Flashing (0 To 2/12 Pitch)

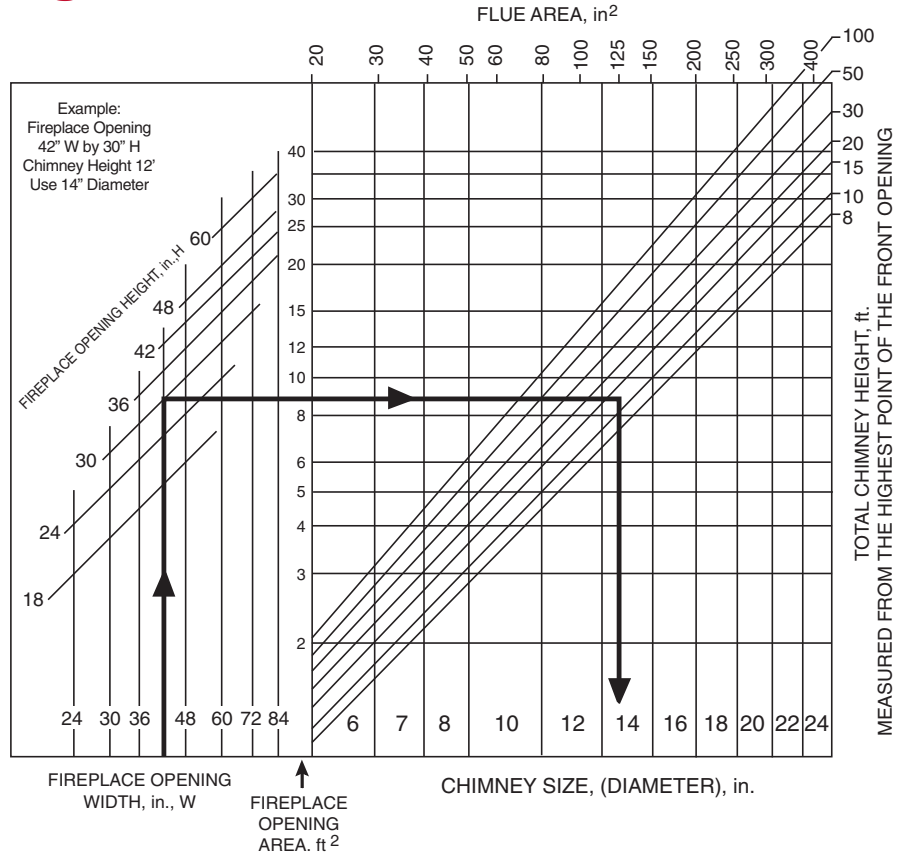
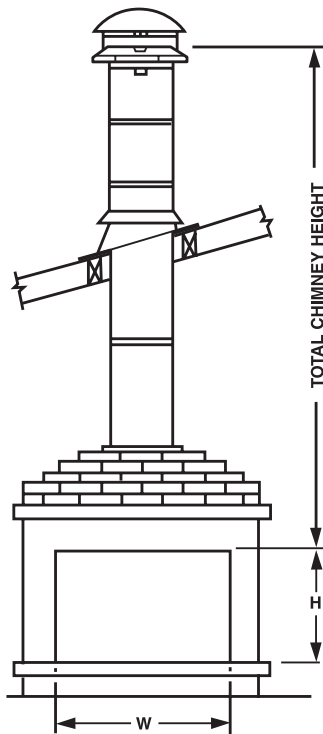


Dia.	Product No.	Part No.	A
16"	216872	16S-VTF	22 ¹ / ₄ "
18"	218872	18S-VTF	24 ¹ / ₄ "
20"	220872	20S-VTF	26 ¹ / ₄ "
22"	222872	22S-VTF	28 ¹ / ₄ "
24"	224872	24S-VTF	30 ¹ / ₄ "

Plastic Sealer 1/16" Thick, 3/4" Wide, 25' Long

Product No.	Part No.
100000	MB-S

Fireplace Chimney Sizing Chart



Chimney Sizing for Woodburning Stoves and Room Heaters

Use the stove outlet size or follow the instructions furnished with the appliance. **Offsets not to exceed 30° from vertical in the U.S.A.**

CHIMNEY OFFSET TABLES FOR LARGE DIAMETER CHIMNEY (INSTALLED LENGTH)

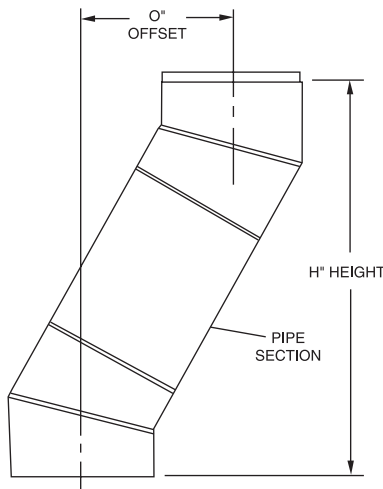
Example of Chart Use:

Using 16" chimney and 30° elbows, what parts do I use to create an approximate 39" total horizontal offset?

1. From Table 1 - Determine the "Offset" two 16" 30° elbows give with no pipe length. Ans. = 6.30"
2. Subtract that number (6.30") from the total required offset (39"). Ans. = 32.70" This is the remaining offset required.
3. From Table 2 determine the closest value to 32.70" in the "Offset @ 30 Degree" Column. Ans = 32.88"
4. Reference the adjacent "Number of Chimney Section" columns to the right to determine the required lengths. Ans. = 1 @ 24" and 4 @ 12".

SUMMARY: In addition to the 2 - 30° elbows, the required lengths are: one - 24" four - 12". Altogether they will create an offset of 6.30" + 32.88" = **39.18"**

NOTE: To determine the amount of height this assembly will require, follow a similar procedure using the "Height" columns in each table. In this example the total installed height of the assembly will be: 24.70" (elbows) + 56.94" (inclined chimney portion) = **81.64"**



Numerous other combinations may be found too, by adding multiples of individual lengths.

TABLE 1

Part No.	2 Elbows w/o Pipe OFFSET	2 Elbows w/o Pipe HEIGHT
16GT - EL 30°	6.30"	24.70"
18GT - EL 30°	6.55"	25.70"
20GT - EL 30°	6.80"	26.70"
22GT - EL 30°	7.13"	27.70"
24GT - EL 30°	7.35"	28.70"

TABLE 2

OFFSET @ 30 Degree	HEIGHT @ 30 Degree	Number of Chimney Sections				Assembled Length
		36"	24"	18"	12"	
5.37"	9.31"				1	10.75"
8.37"	14.51"				1	16.75"
10.75"	18.62"				2	21.50"
11.37"	19.70"		1			22.75"
13.75"	23.82"			1	1	27.50"
16.13"	27.92"				3	32.25"
16.75"	29.02"		1		1	33.50"
17.38"	30.01"	1				34.75"
19.75"	34.21"		1	1		39.50"
21.50"	37.24"				4	43.00"
22.75"	39.40"		2			45.50"
25.13"	43.52"			3		50.25"
25.75"	44.60"	1		1		51.50"
26.88"	46.55"				5	53.75"
28.13"	48.71"		1	2		56.25"
30.50"	52.83"		1	1	2	61.00"
31.13"	53.91"	1		1	1	62.25"
32.88"	56.94"		1		4	65.75"
34.75"	60.20"	2				69.50"
37.13"	64.30"	1	1	1		74.25"
38.88"	67.33"		1	2	2	77.75"
39.50"	68.42"		2	2		79.00"
41.88"	72.53"		1	3	1	83.75"
43.13"	74.70"	2		1		86.25"
44.25"	76.64"		1	2	3	88.50"
45.50"	78.81"		4			91.00"
46.13"	79.90"	2	1			92.25"
47.88"	82.93"		2	3		95.75"
48.50"	84.10"	2		1	1	97.00"
50.25"	87.10"		2	2	2	100.50"
52.13"	90.30"	3				104.25"



The Best Warranty in the Industry

Selkirk Chimney & Venting Systems feature advanced engineering designs and premium materials which allow us to offer a Lifetime Warranty.

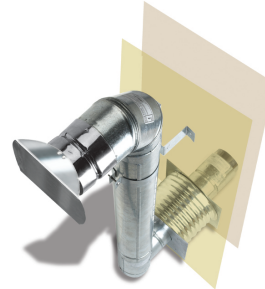
See written warranty for details.



Aluminum Chimney Liners



Stainless Steel Chimney Liners



Pellet-Pipe



Insulated Chimney Systems



Stove Pipe



Direct Vent Pipe for Gas, Pellet, or Multi Fuel

Complete Product Lines to Meet Your Market Needs!

HVAC Products

AirMate:

Registers
Grilles
Diffusers

Chimney:

Ultra-Temp
Ultra-Temp Large
Galva-Temp
Galva-Temp Large
SuperPro
SuperPro 2100 (Canada only)

Venting:

Direct-Temp / Gas
RV & QC Type B Gas Vent
Flexi-Liner
Versa-Liner
Saf-T Vent Special Gas Vent
BV Type B Gas Vent (Canada)
PL Pellet Pipe (Canada)

Hearth Products

Chimney:

Ultra-Temp
Ultra-Temp Large
Galva-Temp
Galva-Temp Large
SuperPro
SuperPro 2100 (Canada only)

Fireplaces:

Bordeaux
Merlot
Chardonnay

Venting:

Direct-Temp / Gas
Direct-Temp / Pellet
Direct-Temp / Multi-Fuel
Double Wall Stove Pipe
Saf-T Pipe
VP Pellet Pipe
Flexi-Liner
Versa-Liner
Saf-T Liner
BV Type B Gas Vent (Canada)
PL Pellet Pipe (Canada)



Reduce, Reuse, Recycle
Our literature is printed on
recyclable paper



RESIDENTIAL AND COMMERCIAL: VENT | CHIMNEY | GRILLES | REGISTERS | DIFFUSERS

United States
5030 Corporate Exchange Blvd.
Grand Rapids, MI 49512

1.800.992.VENT (8368)
info@selkirkcorp.com

2016 Selkirk. All rights reserved.



selkirkcorp.com

Canada
950 South Service Road
Second Floor
Stoney Creek, ON L8E 6A2

1.888.SELKIRK (735.5475)
cscanada@selkirkcorp.com
MBLDCAT 10/2016