



Valve Systems:

MVKEIKN
MVKEIKLP

**INSTALLATION AND OPERATIONS GUIDE FOR GRAND CANYON GAS 6v MODULATING VALVE
GRAND CANYON GAS LOGS USES DEXEN 6003-3V GAS HEATING CONTROLS**

Installation and service must be provided by a qualified installer, service agency or gas supplier



CAUTION

THIS DEVICE SHOULD BE INSTALLED BY A QUALIFIED SERVICE TECHNICIAN WITH DUE REGARD FOR SAFETY AS IMPROPER INSTALLATION COULD RESULT IN A HAZARDOUS CONDITION.



We recommend that our gas hearth products be installed and serviced by professionals who are certified in the U.S. by the National Fireplace Institute® (NFI) as NFI Gas Specialists.

CAUTIONS

1. This valve system **MUST** be installed by a certified and trained gas professional
2. Turn off gas supply before installing valve.
3. All piping **MUST** meet applicable local codes and ordinances and the national fuel gas codes (ANSI Z223.1/NFPA NO.50)
4. ALL wiring **MUST** meet applicable electrical codes and ordinances.
5. Check out the complete system after installing the valve.
6. Prior to installation, verify conformance with burner installation instructions.

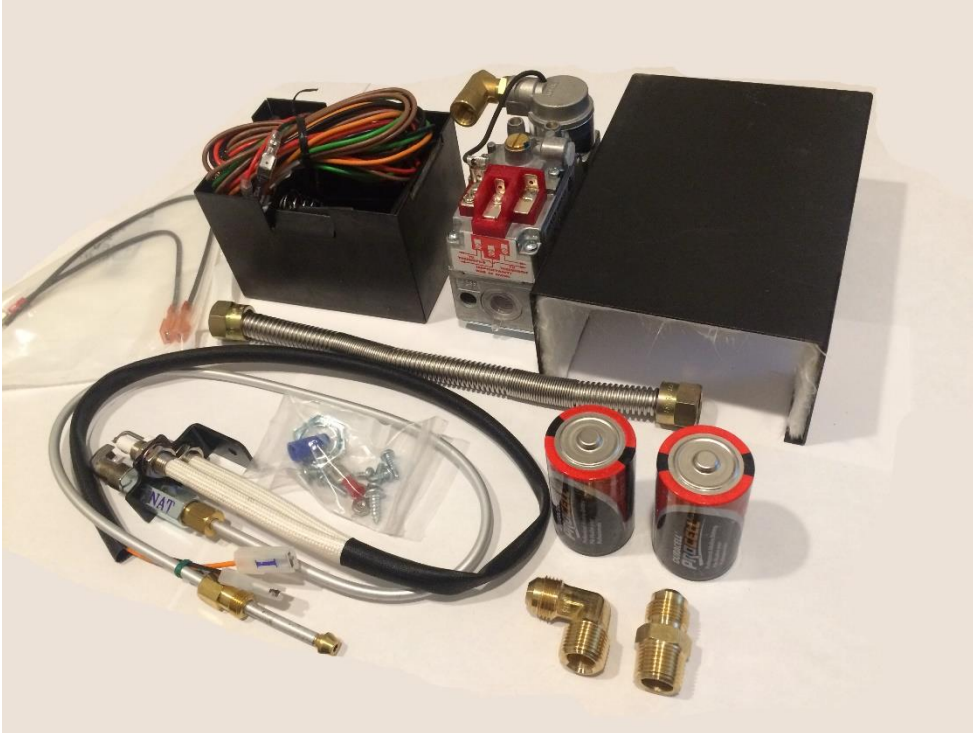
FOR YOUR SAFETY

IF YOU SMELL GAS:

1. **OPEN ALL WINDOWS**
2. **DO NOT TOUCH ELECTRICAL SWITCHES**
3. **EXTINGUISH ALL OPEN FLAMES**
4. **IMMEDIATELY CALL YOUR GAS SUPPLIER**

INSTALLER: Leave this manual with the log set
CONSUMER: Retain this manual for future reference.

PARTS LIST



MVKEIKN/LP PARTS LIST

1. 6003-3V – NG 3v Valve
 2. 6K Module – NG/LP 3v
 3. 350 – Pilot Assembly
 4. Valve Heat Shield w/ Switch
 5. Module Heat Shield
 6. 350-BP – Battery Pack
 7. Wiring Harness
 8. Inlet/Outlet Fittings*
 9. Flex Line
 10. D Cell Batteries
- *Subject to change based off burner size

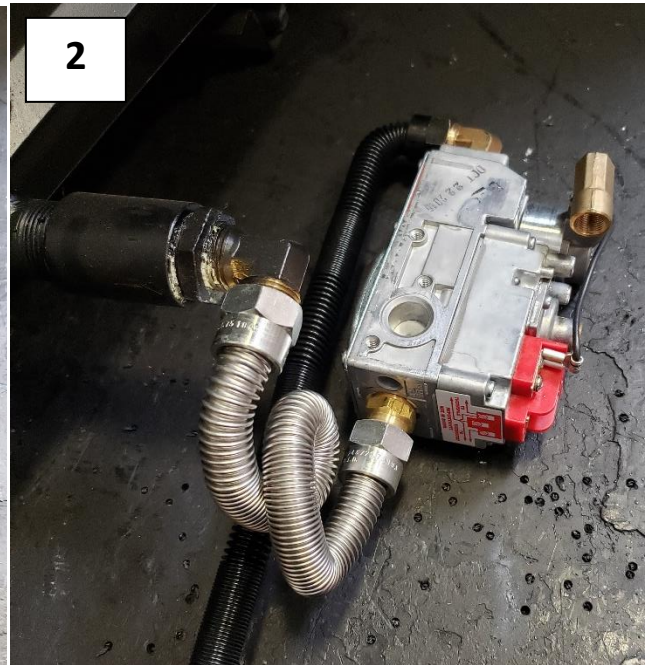
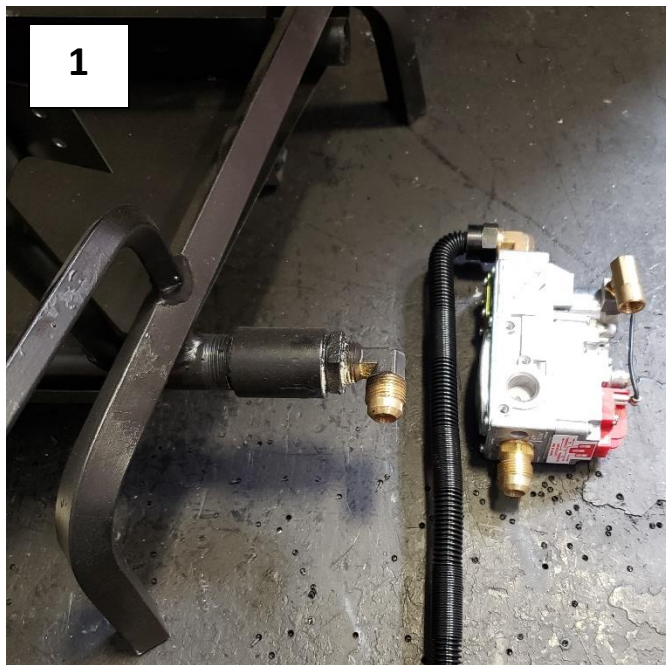
WARNING: Installer MUST follow gas flow on the valve. If not valve may not shut off gas.

INSTALLATION INSTRUCTIONS

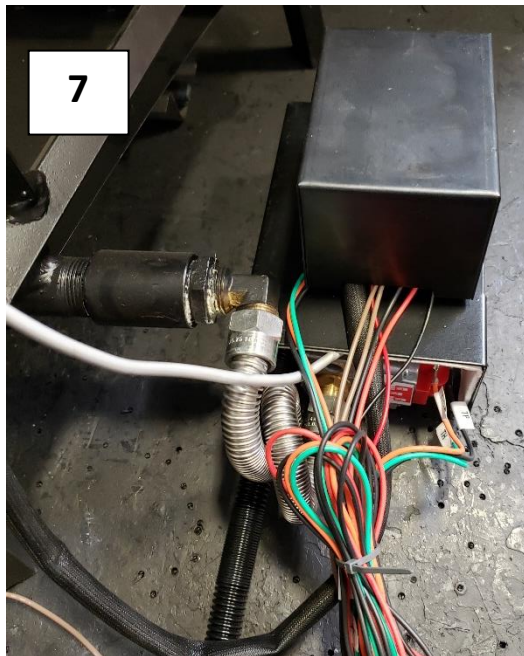
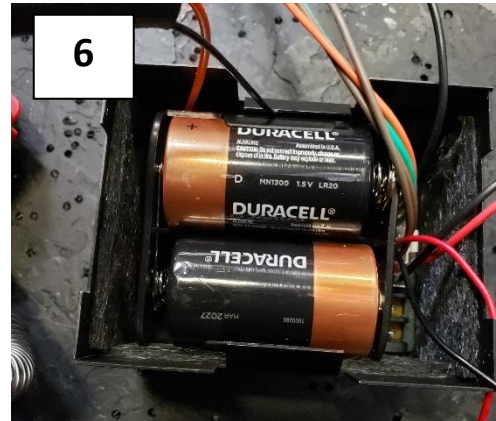
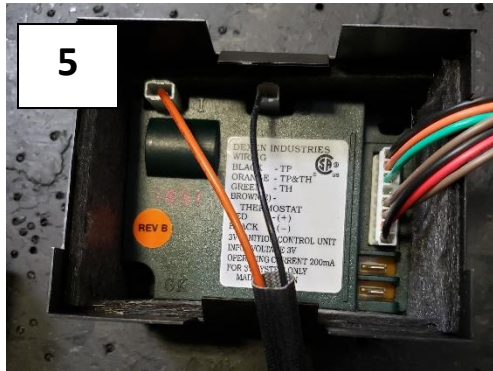
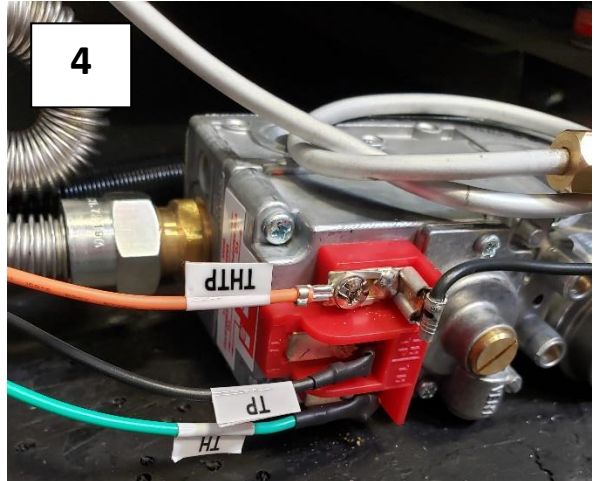
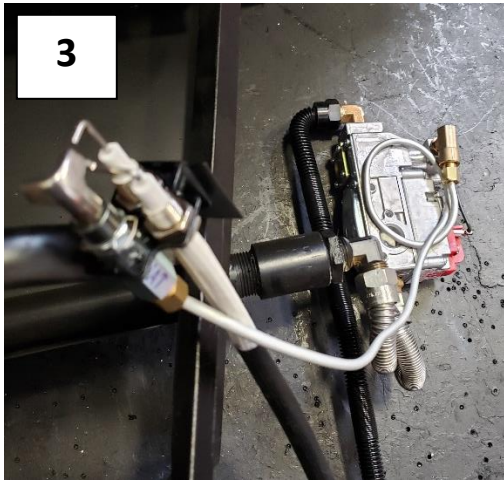
Turn off gas supply and electrical power to equipment before servicing.

PIPING

1. Check replacement valve for multiple outlets (side outlets). If it has them, be sure all unused outlets are plugged using the socket plugs provided.
2. Pipe or tubing must be clean and free of scale and dirt.
3. Make sure gas piping is pressure tested before control is connected. High pressure can damage control causing a hazardous condition. Do not subject control to more than 1/2 PSI, (14" W.C.) inlet pressure.
4. If it is not already installed, a drip leg (sediment trap) must be added to the gas supply line to control. (See figure below.) All piping must comply with local codes and ordinances and with National Fuel Gas Code (ANSI Z223. 1/NFPA, No. 54).
5. Using pipe thread compound or tape (suitable for gas), apply a small amount on the male pipe threads. Leave the first two threads clean. Never use compound on female threads as it might be pushed into the control body.
6. The gas valve is single location and can be mounted in only one position without affecting its operation.
7. Install gas valve so gas flow conforms with the inlet and outlet of the control.
8. **DO NOT** insert any object other than suitable pipe or tubing in the inlet or outlet of this control. Internal damage may occur and result in a hazardous condition. A backup wrench should only be used on the wrench boss provided for this purpose, never on the body of the control, as this could distort the casting. **NOTE:** Do not overtighten any pipe connections, as this could crack the valve body. A valve with a cracked valve body will not be warrantied.



INSTALLATION INSTRUCTIONS Cont.



Operation Instructions:

- **Grand Canyon Gas Logs Modulating 3v system has two way to operate the burner, with the switch OR with the remote.**
 - **First insert 2 x D Cell Batteries into the battery pack.**
- **For operation with switch.**
 - **Locate the switch on the front of the heat shield**
 - **Flip the switch to “I” for on and “O” for off**
- **For Operation with Remote (If remote is purchased).**
 - **Locate the switch on the front of the burner and remove it from the heat shield by pulling the switch forward.**
 - **On the back of the switch remove the (2) Brown wires.**
 - **Attached the Brown wires to the receiver, orientation does not matter**
 - **Follow remote instructions for Battery placement and how to sync remote to receiver.**
 - **Once the receiver and the remote are connected use the controls on the remote to turn the fireplace on and off.**