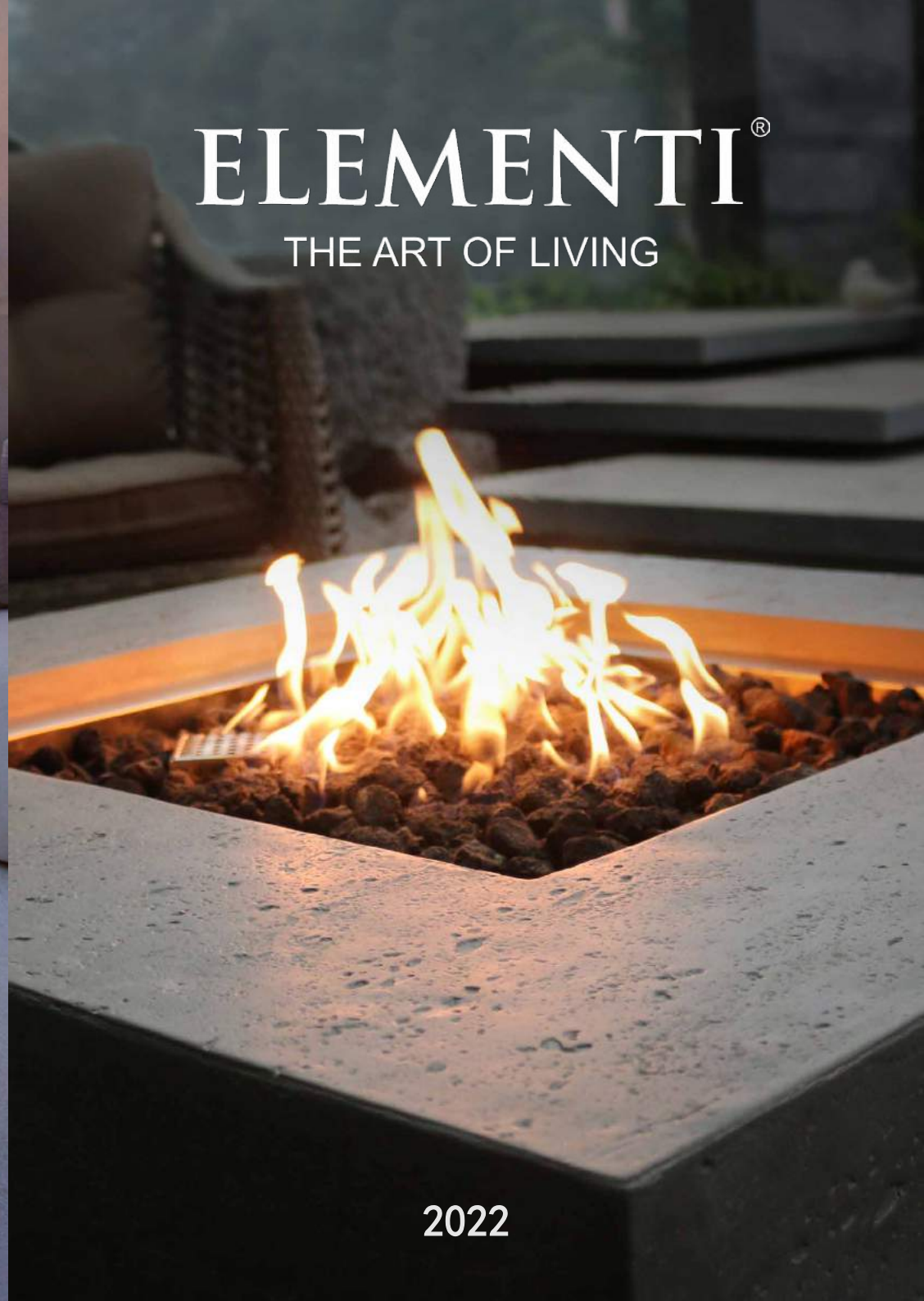




ELEMENTI[®]

THE ART OF LIVING



2022



Fire – The most significant role in humanity's development. Human history tells us that the use of fire had generated a new era of human's striving for freedom and conquering the nature since fabrication of stone tools.

ABOUT ELEMENTI

Elementi is a group of artists and craftsmen that based in Los Angeles, CA. With a synchronous aim to design and manufacture features that artistically combine form and function, we are dedicated to bringing bold outdoor living and landscape features to the market. For our series of fire pits, we start with seeking for or creating items that are beautiful in nature. We then add fire burners to them and turn them into iconic pieces that will surely become the focus in any patio or landscape design.

Our committed engineers have designed and built all the burner systems we use in our fire features. Via in-house manufacturing, we are able to get the correct size and shape for each burner. We can also modify the burner ring and BTU output to achieve a desired effect of the flame.

CUSTOM MANUFACTURING

No matter your preferred style is natural, historic, or modern, our designers can customize for you. We make fire features with a wide range of BTU outputs for both residential and commercial installations. We can also incorporate features such as safety valves, pilot systems and remote electronic ignition into all of our fire pits.

PRIVATE LABEL MANUFACTURING

Large capacity production is no problem for us. We can supply full truckloads of private labelling products for large volume retailers. Our designers are capable of revising our current designs or working with purchasing departments to create novel designs to meet their needs.

CERTIFICATION STANDARDS

All Elementi fire systems strictly follow the standards of North American ANSI Z21.97-2017/CSA 2.41-2017 and the European Union. All our products have achieved certificates from the CSA or CE, among which CSA is the most authoritative institution in North America for products' safety and environmental protection.





LUNAR BOWL

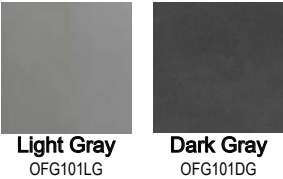
FIRE TABLE

OFG101

Product Description:

- Body construction: Handcrafted glass-fiber reinforced concrete
- Burner ring size: Dia. 12"
Burner ring construction: 16 gauge, 304 stainless steel
- Burner pan size: Dia. 23.7" x 0.05"
Burner pan construction: 16 gauge, 304 stainless steel
- Control system: Push button spark ignition system
- Natural gas item number: OFG101-NG
Propane item number: OFG101-LP
- Maximum heat output: 45,000 BTUs
- Certification: CSA Certified
- Media: 26.4 lbs lava rock (included)
- Canvas cover included
- Warranty: 1 year
- Accessories available (sold separately):
 1. Wind screen
 2. Tank cover
 3. Stainless steel lid

Available colors:



Specification	Length (inch)	Width (inch)	Height (inch)	Weight (lb)
Product	42.1	42.1	15.7	147
Package	44.1	44.1	18.1	174





MANHATTAN

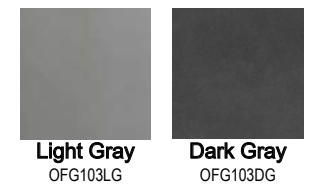
FIRE TABLE

OFG103

Product Description:

- Body construction: Handcrafted glass-fiber reinforced concrete
- Burner ring size: Dia. 12"
Burner ring construction: 16 gauge, 304 stainless steel
- Burner pan size: 20.3" x 20.3" x 2"
Burner pan construction: 16 gauge, 304 stainless steel
- Control system: Push button spark ignition system
- Natural gas item number: OFG103-NG
Propane item number: OFG103-LP
- Maximum heat output: 45,000 BTUs
- Certification: CSA Certified
- Media: 19.8 lbs lava rock (included)
- Canvas cover included
- Warranty: 1 year
- Accessories available (sold separately):
 1. Wind screen
 2. Tank cover
 3. Stainless steel lid

Available colors:



Specification	Length (inch)	Width (inch)	Height (inch)	Weight (lb)
Product	35.8	35.8	15.7	142
Package	38.8	38.8	18.5	158



METROPOLIS

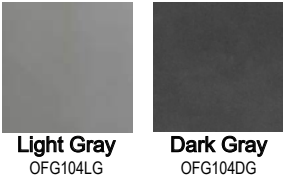
FIRE TABLE

OFG104

Product Description:

- Body construction: Handcrafted glass-fiber reinforced concrete
- Burner ring size: Dia. 12"
Burner ring construction: 16 gauge, 304 stainless steel
- Burner pan size: Dia. 20.3" x 2"
Burner pan construction: 16 gauge, 304 stainless steel
- Control system: Push button spark ignition system
- Natural gas item number: OFG104-NG
Propane item number: OFG104-LP
- Maximum heat output: 45,000 BTUs
- Certification: CSA Certified
- Media: 13.2 lbs lava rock (included)
- Canvas cover included
- Warranty: 1 year
- Accessories available (sold separately):
 1. Wind screen
 2. Tank cover
 3. Stainless steel lid

Available colors:



Specification	Length (inch)	Width (inch)	Height (inch)	Weight (lb)
Product	55.9	31.9	13.8	164
Package	58.7	35	16.7	181





KINGSALE

FIRE TABLE

OFG126

Product Description:

- Body construction: Handcrafted glass-fiber reinforced concrete
- Burner size: 30" length
Burner construction: 16 gauge, 304 stainless steel
- Burner pan size: I Type 41.3" x 11.3" x 2"
Burner pan construction: 16 gauge, 304 stainless steel
- Control system: Push button spark ignition system
- Natural gas item number: OFG126-NG
Propane item number: OFG126-LP
- Maximum heat output: 45,000 BTUs
- Certification: CSA Certified
- Media: 13.2lbs lava rock (included)
- Canvas cover included
- Warranty: 1 year
- Accessories available (sold separately):
 1. Wind screen
 2. Tank cover
 3. Stainless steel lid

Specification	Length (inch)	Width (inch)	Height (inch)	Weight (lb)
Product	57.9	28	16.9	174
Package	60.4	30.3	20.1	194



HAMPTON

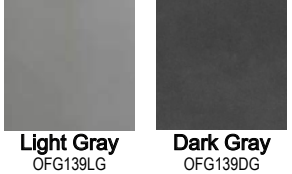
FIRE TABLE

OFG139

Product Description:

- Body construction: Handcrafted glass-fiber reinforced concrete
- Burner size: 30" length
Burner construction: 16 gauge, 304 stainless steel
- Burner pan size: I Type 41.3" x 11.3" x 2"
Burner pan construction: 16 gauge, 304 stainless steel
- Control system: Push button spark ignition system
- Natural gas item number: OFG139-NG
Propane item number: OFG139-LP
- Maximum heat output: 45,000 BTUs
- Certification: CSA Certified
- Media: 13.2 lbs lava rock (included)
- Canvas cover included
- Warranty: 1 year
- Accessories available (sold separately):
 1. Wind screen
 2. Tank cover
 3. Stainless steel lid

Available colors:



Specification	Length (inch)	Width (inch)	Height (inch)	Weight (lb)
Product	55.9	31.9	13.8	163
Package	58.7	35	16.7	183



GRANVILLE

FIRE TABLE

OFG121

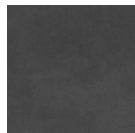
Product Description:

- Body construction: Handcrafted glass-fiber reinforced concrete
- Burner size: 30" length
Burner construction: 16 gauge, 304 stainless steel
- Burner pan size: I Type 41.3" x 11.3" x 2"
Burner pan construction: 16 gauge, 304 stainless steel
- Control system: Push button spark ignition system
- Natural gas item number: OFG121-NG
Propane item number: OFG121-LP
- Maximum heat output: 45,000 BTUs
- Certification: CSA Certified
- Media: 13.2 lbs lava rock (included)
- Canvas cover included
- Warranty: 1 year
- Accessories available (sold separately):
 1. Wind screen
 2. Tank cover
 3. Stainless steel lid

Available colors:



Light Gray
OFG121LG



Dark Gray
OFG121DG

Specification	Length (inch)	Width (inch)	Height (inch)	Weight (lb)
Product	59.8	27.2	16.9	174
Package	62.6	29.9	20.1	194





COLUMBIA

FIRE TABLE

OFG105

Product Description:

- Body construction: Handcrafted glass-fiber reinforced concrete
- Burner ring size: Dia. 12"
Burner ring construction: 16 gauge, 304 stainless steel
- Burner pan size: Dia. 17.7" x 0.05"
Burner pan construction: 16 gauge, 304 stainless steel
- Control system: Push button spark ignition system
- Natural gas item number: OFG105-NG
Propane item number: OFG105-LP
- Maximum heat output: 45,000 BTUs
- Certification: CSA Certified
- Media: 13.2 lbs lava rock (included)
- Canvas cover included
- Warranty: 1 year
- Accessories available (sold separately):
 1. Wind screen
 2. Tank cover
 3. Seat
 4. Stainless steel lid

Specification	Length (inch)	Width (inch)	Height (inch)	Weight (lb)
Product	41.7	41.7	15.7	136
Package	42.5	38.6	18.1	158



BOULDER

FIRE TABLE

OFG110

Product Description:

- Body construction: Handcrafted glass-fiber reinforced concrete
- Burner ring size: Dia. 12"
Burner ring construction: 16 gauge, 304 stainless steel
- Burner pan size: Dia. 17.7" x 0.05"
Burner pan construction: 16 gauge, 304 stainless steel
- Control system: Push button spark ignition system
- Natural gas item number: OFG110-NG
Propane item number: OFG110-LP
- Maximum heat output: 45,000 BTUs
- Certification: CSA Certified
- Media: 13.2 lbs lava rock (included)
- Canvas cover included
- Warranty: 1 year
- Accessories available (sold separately):
 1. Wind screen
 2. Tank cover
 3. Seat
 4. Stainless steel lid

Specification	Length (inch)	Width (inch)	Height (inch)	Weight (lb)
Product	43.3	35	16.1	132
Package	42.5	38.6	18.1	154



FIERY ROCK

FIRE TABLE

OFG147

Product Description:

- Body construction: Handcrafted glass-fiber reinforced concrete
- Burner ring size: Dia. 12"
Burner ring construction: 16 gauge, 304 stainless steel
- Burner pan size: Dia. 17.7" x 0.05"
Burner pan construction: 16 gauge, 304 stainless steel
- Control system: Push button spark ignition system
- Natural gas item number: OFG147-NG
Propane item number: OFG147-LP
- Maximum heat output: 45,000 BTUs
- Certification: CSA Certified
- Media: 13.2 lbs lava rock (included)
- Canvas cover included
- Warranty: 1 year
- Accessories available (sold separately):
 - 1. Wind screen
 - 2. Tank cover
 - 3. Seat
 - 4. Stainless steel lid

Specification	Length (inch)	Width (inch)	Height (inch)	Weight (lb)
Product	49.6	41.7	16.9	169
Package	52.4	44.5	19.3	196



MANCHESTER
FIRE TABLE
OFG145

Product Description:

- Body construction: Handcrafted glass-fiber reinforced concrete
- Burner ring size: Dia. 12"
Burner ring construction: 16 gauge, 304 stainless steel
- Burner pan size: Dia. 17.7" x 0.05"
Burner pan construction: 16 gauge, 304 stainless steel
- Control system: Push button spark ignition system
- Natural gas item number: OFG145-NG
Propane item number: OFG145-LP
- Maximum heat output: 45,000 BTUs
- Certification: CSA Certified
- Media: 13.2 lbs lava rock (included)
- Canvas cover included
- Warranty: 1 year
- Accessories available (sold separately):
 1. Wind screen
 2. Tank cover
 3. Seat
 4. Stainless steel lid

Available colors:



Specification	Length (inch)	Width (inch)	Height (inch)	Weight (lb)
Product	41.7	39.4	16.9	163
Package	41.3	40.6	19.1	196



WARREN
FIRE TABLE
OFG307

Product Description:

- Body construction: Handcrafted glass-fiber reinforced concrete
- Burner ring size: Dia. 12"
Burner ring construction: 16 gauge, 304 stainless steel
- Burner pan size: Dia. 17.7" x 0.05"
Burner pan construction: 16 gauge, 304 stainless steel
- Control system: Push button spark ignition system
- Gas type: Propane
Item number: OFG307-LP
- Maximum heat output: 45,000 BTUs
- Conceals standard 20 lbs LP gas tank (not included)
- Certification: CSA Certified
- Media: 13.2 lbs lava rock (included)
- Canvas cover included
- Warranty: 1 year
- Accessories available (sold separately):
 1. Wind screen
 2. Seat
 3. Stainless steel lid

Available colors:



Specification	Length (inch)	Width (inch)	Height (inch)	Weight (lb)
Product	41.5	39.4	26	191
Package	41.5	40.7	28.5	224



NAPLES

FIRE TABLE

OFH103

Product Description:

- Body construction: Handcrafted glass-fiber reinforced concrete top with powder coated steel base
- Burner ring size: Dia. 12"
Burner ring construction: 16 gauge, 304 stainless steel
- Burner pan size: 17.8" x 17.8" x 0.2"
Burner pan construction: 16 gauge, 304 stainless steel
- Control system: Push button spark ignition system
- Natural gas item number: OFH103-NG
Propane item number: OFH103-LP
- Maximum heat output: 45,000 BTUs
- Certification: CSA Certified
- Media: 13.2 lbs lava rock (included)
- Canvas cover included
- Warranty: 1 year
- Accessories available (sold separately):
 1. Wind screen
 2. Tank cover
 3. Stainless steel lid

Specification	Length (inch)	Width (inch)	Height (inch)	Weight (lb)
Product	55.9	28	16.9	145
Package	58.7	30.7	10.6	172



NAPA

BARREL FIRE PIT

OFG615

Product Description:

- Body construction: Handcrafted glass-fiber reinforced concrete
- Burner ring size: Dia. 9.8"
Burner ring construction: 18 gauge, 304 stainless steel
- Burner pan size: Dia. 12.2" x 0.05"
Burner pan construction: 18 gauge, 304 stainless steel
- Control system: Push button spark ignition system
- Gas type: Propane
Item number: OFG615-LP
- Maximum heat output: 40,000 BTUs
- Conceals standard 20 lbs propane tank (not included)
- Certification: CSA Certified
- Media: 13.2 lbs lava rock (included)
- Canvas cover included
- Warranty: 1 year

Specification	Length (inch)	Width (inch)	Height (inch)	Weight (lb)
Product	26.8	26.8	31.5	130
Package	30.3	30.3	35.4	152



ROVA
BAR TABLE
OFG224

Product Description:

- Body construction: Handcrafted glass-fiber reinforced concrete
- Burner ring size: Dia. 9.8"
Burner ring construction: 18 gauge, 304 stainless steel
- Burner pan size: 12.2" x 12.2" x 0.2"
Burner pan construction: 18 gauge, 304 stainless steel
- Control system: Push button spark ignition system
- Gas type: Propane
Item number: OFG224-LP
- Maximum heat output: 40,000 BTUs
- Conceals standard 20 lbs propane tank (not included)
- Certification: CSA Certified
- Media: 6.6 lbs lava rock (included)
- Canvas cover included
- Warranty: 1 year
- Accessories available (sold separately):
 1. Wind screen
 2. Stainless steel lid

Specification	Length (inch)	Width (inch)	Height (inch)	Weight (lb)
Product	34.3	34.3	41.7	195
Product (top)	34.3	34.3	2.4	
Product (base)	22	22	41.7	
Package (top)	36.6	36.6	4.1	219
Package (base)	24.4	24.4	44.7	



LAFITE
BARREL FIRE TABLE
OFG225

Product Description:

- Body construction: Handcrafted glass-fiber reinforced concrete
- Burner ring size: Dia. 12"
Burner ring construction: 16 gauge, 304 stainless steel
- Burner pan size: Dia. 17.8" x 0.04"
Burner pan construction: 16 gauge, 304 stainless steel
- Control system: Push button spark ignition system
- Gas type: Propane
Item number: OFG225-LP
- Maximum heat output: 45,000 BTUs
- Conceals standard 20 lbs propane tank (not included)
- Certification: CSA Certified
- Media: 13.2 lbs lava rock (included)
- Canvas cover included
- Warranty: 1 year
- Accessories available (sold separately):
 1. Wind screen
 2. Stainless steel lid

Specification	Length (inch)	Width (inch)	Height (inch)	Weight (lb)
Product	48	48	41.7	218
Product (top)	48	48	2.4	
Product (base)	22	22	41.7	
Package (top)	51.2	51.2	4.5	270
Package (base)	31.9	31.9	46.9	



MONTREAL

BAR TABLE

OFG221

Product Description:

- Body construction: Handcrafted glass-fiber reinforced concrete
- Burner ring size: Dia. 9.8"
Burner ring construction: 16 gauge, 304 stainless steel
- Burner pan size: 12.2" x 12.2" x 0.2"
Burner pan construction: 16 gauge, 304 stainless steel
- Control system: Push button spark ignition system
- Gas type: Propane
Item number: OFG221-LP
- Maximum heat output: 40,000 BTUs
- Conceals standard 20 lbs propane tank (not included)
- Certification: CSA Certified
- Media: 6.6 lbs lava rock (included)
- Canvas cover included
- Warranty: 1 year
- Accessories available (sold separately):
 1. Wind screen
 2. Stainless steel lid

Specification	Length (inch)	Width (inch)	Height (inch)	Weight (lb)
Product	34.3	34.3	41.7	195
Product (top)	34.3	34.3	2.4	
Product (base)	22	22	41.7	
Package (top)	36.6	36.6	4.1	219
Package (base)	24.4	24.4	44.7	



BIRMINGHAM

DINING TABLE

OFG202

Product Description:

- Body construction: Handcrafted glass-fiber reinforced concrete
- Burner ring size: Dia. 12"
Burner ring construction: 16 gauge, 304 stainless steel
- Burner pan size: 17.8" x 17.8" x 0.2"
Burner pan construction: 16 gauge, 304 stainless steel
- Control system: Push button spark ignition system
- Gas type: Propane
Item number: OFG202-LP
- Maximum heat output: 45,000 BTUs
- Conceals standard 20 lbs propane tank (not included)
- Certification: CSA Certified
- Media: 13.2 lbs lava rock (included)
- Canvas cover included
- Warranty: 1 year
- Accessories available (sold separately):
 1. Wind screen
 2. Stainless steel lid

Specification	Length (inch)	Width (inch)	Height (inch)	Weight (lb)
Product	48	48	29.5	242
Product (top)	48	48	2.4	
Product (base)	26.8	26.8	29.5	
Package (top)	50.4	50.4	4.1	284
Package (base)	29.1	29.1	32.7	



SONOMA

DINING TABLE

OFG201

Product Description:

- Body construction: Handcrafted glass-fiber reinforced concrete top with natural ashwood base
- Burner size: 30" length
Burner construction: 16 gauge, 304 stainless steel
- Burner pan size: I Type 38.3" x 8.3" x 2"
Burner pan construction: 16 gauge, 304 stainless steel
- Control system: Push button spark ignition system
- Natural gas item number: OFG201-NG
Propane item number: OFG201-LP
- Maximum heat output: 45,000 BTUs
- Certification: CSA Certified
- Media: 13.2 lbs lava rock (included)
- Canvas cover included
- Warranty: 1 year
- Accessories available (sold separately):
 1. Wind screen
 2. Tank cover
 3. Stainless steel lid

Specification	Length (inch)	Width (inch)	Height (inch)	Weight (lb)
Product	82.7	39.4	28	273
Product (top)	82.7	39.4	2.8	
Product (base)	61.8	36.2	28	361
Package	89.8	46.5	18.5	

TANK COVER



SQUARE TANK COVER 20" H

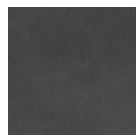
Product Description:

- Item Number: ONB016
- Body construction:
Handcrafted glass-fiber reinforced concrete
- Product size: 15.7" x 15.7" x 20"
- Product weight: 33 lbs

Available colors:



Light Gray
ONB016LG



Dark Gray
ONB016DG



SQUARE TANK COVER 24.4" H

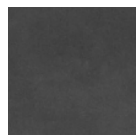
Product Description:

- Item Number: ONB01-209
- Body construction:
Handcrafted glass-fiber reinforced concrete
- Product size: 17.7" x 17.7" x 24.4"
- Product weight: 46 lbs

Available colors:



Light Gray
ONB01-209LG



Dark Gray
ONB01-209DG

TANK COVER



SQUARE TANK COVER 20" H

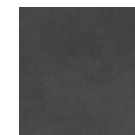
Product Description:

- Item Number: ONB01-109
- Body construction:
Handcrafted glass-fiber reinforced concrete
- Product size: 15.7" x 15.7" x 20"
- Product weight: 33 lbs

Available colors:



Light Gray
ONB01-109LG



Dark Gray
ONB01-109DG



SQUARE TANK COVER 24.4" H

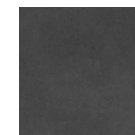
Product Description:

- Item Number: ONB01-208
- Body construction:
Handcrafted glass-fiber reinforced concrete
- Product size: 17.7" x 17.7" x 24.4"
- Product weight: 46 lbs

Available colors:



Light Gray
ONB01-208LG



Dark Gray
ONB01-208DG

TANK COVER



ROUND TANK COVER 20" H

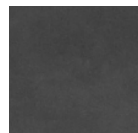
Product Description:

- Item Number: ONB01-102
- Body construction:
Handcrafted glass-fiber reinforced concrete
- Product size: 15.7" x 15.7" x 20"
- Product weight: 27.5 lbs

Available colors:



Light Gray
ONB01-102LG



Dark Gray
ONB01-102DG



ROUND TANK COVER 24.4" H

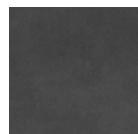
Product Description:

- Item Number: ONB01-207
- Body construction:
Handcrafted glass-fiber reinforced concrete
- Product size: 17.7" x 17.7" x 24.4"
- Product weight: 38.5 lbs

Available colors:



Light Gray
ONB01-207LG



Dark Gray
ONB01-207DG

TANK COVER



SQUARE TANK COVER 24.4" H

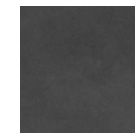
Product Description:

- Item Number: ONB01-105
- Body construction:
Handcrafted glass-fiber reinforced concrete
- Product size: 17.7" x 17.7" x 24.4"
- Product weight: 48.4 lbs
- Top removable

Available colors:



Light Gray
ONB01-105LG



Dark Gray
ONB01-105DG



SQUARE TANK COVER 25.6" H

Product Description:

- Item Number: ONB01-211RW
- Body construction:
Handcrafted glass-fiber reinforced concrete
- Product size: 17.7" x 17.7" x 24.8"
- Product weight: 48.4 lbs
- Top removable

TANK COVER



BOULDER TANK COVER 24.4" H

Product Description:

- Item Number: ONB01-117
- Body construction:
High performance cast concrete
- Product size: 22" x 19.7" x 24.4"
- Product weight: 48.4 lbs



COLUMBIA TANK COVER 24.4" H

Product Description:

- Item Number: ONB01-106
- Body construction:
High performance cast concrete
- Product size: 18.5" x 15.2" x 24.4"
- Product weight: 39.6 lbs

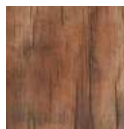


MANCHESTER TANK COVER 24.4" H

Product Description:

- Item Number: ONB01-118
- Body construction:
High performance cast concrete
- Product size: 18.5" x 19.5" x 24.4"
- Product weight: 50.6 lbs

Available colors:



Redwood
ONB01-118RW



Classic Gray
ONB01-118CG

SEAT



BOULDER SEAT

Product Description:

- Item Number: ONE01-102
- Body construction:
High performance cast concrete
- Product size: 18.5" x 16.5" x 15.4"
- Product weight: 31 lbs



COLUMBIA SEAT

Product Description:

- Item Number: ONE01-101
- Body construction:
High performance cast concrete
- Product size: 18.5" x 15.2" x 17.9"
- Product weight: 31 lbs



WARREN SEAT

Product Description:

- Item Number: ONE01-103
- Body construction:
High performance cast concrete
- Product size: 15.7" x 15" x 18.1"
- Product weight: 31 lbs

Available colors:



Redwood
ONE01-103RW



Classic Gray
ONE01-103CG

WIND SCREEN

Product Description:

- Clear tempered glass
- Easy to assemble and clean
- Stainless steel attachment clips
- For rectangle, square and round fire pits

Available in different fire pit sizes

- It is recommended to purchase together with fire features



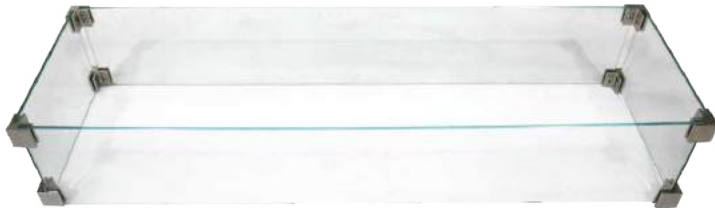
ONC05-001 24.4" x 24.4" x 7"



ONC05-003A 17.7" x 17.7" x 9.8"

ONC05-002 30" x 30" x 7"

ONC05-004 22" x 22" x 7"



ONC05-005 44.3" x 14" x 7"

FID#	Matching Fire Table List
ONC05-001	OFG104/OFG105/OFG110/OFG145/OFG225/OFG307-WS
ONC05-002	OFG101/OFG147-WS
ONC05-003A	OFG224-WS
ONC05-004	OFG103/OFG202/OFH103-WS
ONC05-005	OFG121/OFG139/OFG201-WS

STAINLESS STEEL LID

Product Description:

- High quality stainless steel
- Protects fire pan from excess moisture
- No assembly required
- Easy to clean

Available in different fire pit sizes



ONF01-120D 20.7" x 20.7" x 1"



ONF01-214D 14" x 14" x 1"

ONF01-129D 29" x 29" x 1"

ONF01-220D 20.7" x 20.7" x 1"



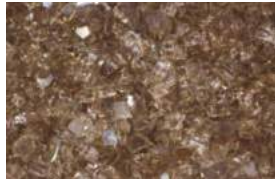
ONF01-442D 42" x 12" x 1"

FID#	Matching Fire Table List
ONF01-214D	OFG224-SS
ONF01-220D	OFG103/OFG202/OFG307/OFH103-SS
ONF01-120D	OFG104/OFG105/OFG110/OFG145-SS
ONF01-129D	OFG101/OFG147-SS
ONF01-442D	OFG121/OFG139/OFG201-SS

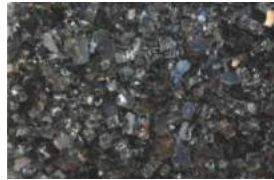
FIRE GLASS



Carbon Black
ODS02101



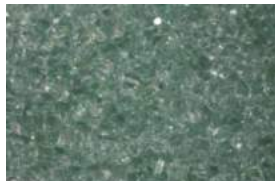
Copper
ODS02102



Bronze
ODS02103



Platinum
ODS02105



Aqua Marine
ODS02201



Caribbean Blue
ODS02203

Product Description:

- Tempered Glass
- Multiple color options available
- Hand-screened and sorted to ensure consistency and quality
- Product size: 0.2" or 0.5" available
- It is recommended to purchase together with fire features



Plastic Bottle
10" x 10" x 10"
25 lbs



Plastic Bottle
5.3" x 4.9" x 8.7"
11 lbs

FIRE LOGS



ODW01001
CERAMIC



ODW01003
CERAMIC



ODW01005
CERAMIC



ODW01012
CERAMIC



ODW01013
CERAMIC



ODW01010
CERAMIC

Product Description:

- Natural wood shape
- Handcrafted
- Burn clean and do not release any ash or residue into the air
- Cool quickly thus are very safe
- It is recommended to purchase together with fire features



LAVA PEBBLES



ODS07-B46
Black Lava Pebble
Size Dia. 1.6" - 2.4"



ODS07-B68
Black Lava Pebble
Size Dia. 2.4" - 3.1"



ODS07-R46
Red Lava Pebble
Size Dia. 1.6" - 2.4"

Product Description:

- Sourced from lava fields
- Recommended purchased with fire features together
- Tumbled to create a more uniform shape and unique look
- It is recommended to purchase together with fire features



NATURAL GAS CONVERSION KIT

OCK45-NG01
For 45,000 BTUs Compatibility



Product Description:

- Convert your propane gas unit to run on natural gas
- It must be installed by a qualified installer or gas technician

BUILT-IN BURNER KIT



Natural gas item No.: BBK01NG
Propane item No.: BBK01LP

Product Description:

- Body construction: Stainless steel
- Burner size: Dia.12"
- Burner construction: 16 gauge, 304 stainless steel
- Control system: Push button spark ignition
- Maximum heat output: 60,000 BTUs
- Certification: CSA Certified
- Media: 19.8 lbs lava rock or fire glass (included)
- Stainless steel lid included
- Warranty: 1 year



Natural gas item No.: BBK02NG
Propane item No.: BBK02LP

Product Description:

- Body construction: Stainless steel
- Burner size: Dia.12"
- Burner construction: 16 gauge, 304 stainless steel
- Control system: Push button spark ignition
- Maximum heat output: 60,000 BTUs
- Certification: CSA Certified
- Media: 19.8 lbs lava rock or fire glass (included)
- Stainless steel lid included
- Warranty: 1 year



Natural gas item No.: BBK03NG
Propane item No.: BBK03LP

Product Description:

- Body construction: Stainless steel
- Burner size: Length 30"
- Burner construction: 16 gauge, 304 stainless steel
- Control system: Push button spark ignition
- Maximum heat output: 60,000 BTUs
- Certification: CSA Certified
- Media: 19.8 lbs lava rock or fire glass (included)
- Stainless steel lid included
- Warranty: 1 year

FID#	Product specification				Package specification			
	L(inch)	W(inch)	H(inch)	Weight(lb)	L(inch)	W(inch)	H(inch)	Weight(lb)
BBK01	20.3	20.3	6.5	33.2	31.9	22.8	9.1	39.4
BBK02	24.3	20.3	6.5	34.8	38.6	22.8	9.1	42.0
BBK03	43.5	11.3	6.5	40.7	49.6	16.9	9.1	47.5