

Freestanding

Designer Fireplaces

- > See-through style
- > Easy installation, buy today, light tonight
- > Strikingly elegant freestanding fireplaces
- > Distinctive design features and industrial materials enhance contemporary spaces
- > No ash, no soot, no smoke

ecosmart⁺
Fire



Designer Fireplaces Collection

Our freestanding Designer Fireplaces don't require a flue or a chimney, nor any complicated installation. This makes them incredibly quick and easy to install.





You'll have the ability to move these contemporary, stylish pieces of portable furniture from room to room. Or to relocate your bioethanol fireplace from inside your residence to the outside during parties or festivities and store away through the warmer months if space is an issue.

1. Ghost
2. Igloo



Designer Fireplaces Specifications

Collection	Dimensions L x W x H mm/in	Compatible Burner	Fuel Capacity	Heats on Average (Indoors)	Thermal Output Net (MAX)	Approx. Burn Time	Minimum Room Size (per burner)
Ghost 	400 x 386 x 1106 15.7 x 15.2 x 19.8	AB3	2.5 L [0.7 Gals]	Over 20 m ² [215 ft ²]	6.14 MJ/h 5,800 BTU/h 1.7 kW	8 - 11 hours	40 m ³ [1,413 ft ³]
Igloo 	978 x 494 x 904 38.5 x 19.4 x 35.6	BK5	5 L [1.3 Gals]	Over 35 m ² [376.7 ft ²]	14 MJ/h 13,000 BTU/h 3.5 kW	7 - 11 hours	70 m ³ [2,472 ft ³]

Freestanding

Designer Fireplaces Features & Benefits

EcoSmart Fire's collection of freestanding fire design solutions add amazing warmth and remarkable ambiance to all environments - without the fuss, without any building work, and without any mess.



1. Glass Surround
Made with Toughened Glass.

2. Colours
Burner Shelf and Burner come in Stainless Steel.

Ghost is also available in Black.



No Flue, No Chimney, No Electricity Connection
Our freestanding fireplaces offer an easy and immediate, environmentally friendly solution to adding warmth and ambiance to any location.

Quick and Easy Installation
With no installation or building works required, simply unpack, put into position, and off you go.



Included accessories to ensure safe operation



Jerry Can with Safety Spout and e-NRG bottle adaptor

Our 5L [1.3Gal] Jerry Can will allow safe storing/decanting of the e-NRG Bioethanol used in the Burner.

The e-NRG adaptor is used to connect the Safety Spout to an e-NRG bottle.



Lighter & Lighting Rod

The Lighting Rod is designed to enable you to safely adjust the slider position on the Burner at any time. It is also used for the ignition procedure.



Jerry Can Spout Extension (AB3 Burner Only)

This is for use with models that have more restricted access to the filling point so that filling can be done in a safe manner.



Optional Accessory Ghost Fire Screen

The Ghost Fire Screen attaches seamlessly to the front face of the Ghost Portable Fireplace.



Optional Accessory Plasma Fire Screen

The Plasma is supported by simple stainless steel feet that are clamped to the base of the flat pane of glass, elevating the screen as if floating while providing enhanced stability.



Optional Accessory Decorative Steel Logs

Made from stainless steel with a patina finish, they are available in two different colours.

Decorative logs must NOT be placed directly over an open flame. They are designed to sit near heat but not over flames.

Portable Fireplace

Fully portable, you can move the fireplace between rooms and outdoor spaces, or store away when not needed.

Environmentally-Friendly

Bioethanol fireplaces use an environmentally-friendly, renewable energy source that burns clean and delivers warming heat. You and your guests will enjoy the ambiance and tranquility of a real fire, without the hassles of burning real wood - no more embers, ash, and soot to clean up.

Global Compliance

These models comply with existing standards in the USA, Europe, UK and Australia. UL Listed, EN 16647 BSI Certified ACCC Safety Mandate compliant.

Freestanding

Designer Fireplaces Installation Guide*

Enjoy the simplicity of hassle-free installation. All you need to do is unpack, place your fireplace into position and enjoy.



Step 1 Insert burner into metal tray
Step 2 Light! >>

*GUIDE ONLY - must read the instructions included with the model.



Inspiration



1. SKYE Suites Sydney, Australia
Model: Ghost x 2
As you walk through the SKYE Suites Sydney entrance, you are warmly greeted by two Ghost fireplaces, which provide a striking entry element.

2. New American Home, USA
Model: Ghost
The reflective glass panels of EcoSmart's Ghost fireplace provides 360-degree views of the dancing flame.

[Case Study available on our website](#)



Freestanding Designer Fireplaces



“For our home the particular design constraints did not allow for a flued fireplace system. [The EcoSmart Fire] was the perfect complement to my vision.”

LUIGI PREZIUSO, BDA BUILDING SOLUTIONS, AUSTRALIA



1. Private Residence, Australia

Model: Igloo

Renowned Australian builder and designer Luigi Preziuso explains why he chose an EcoSmart Fire to heat his own home on Sydney's Northern Beaches.

[Case Study available on our website](#)

2. Commercial Space, Japan

Model: Igloo

Used in a commercial setting, the Igloo enhances and blends perfectly with the decor.

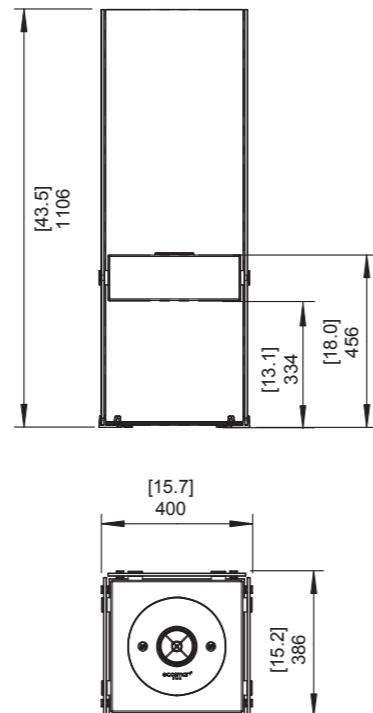
Ghost Specifications

An elegant, freestanding fireplace, Ghost is constructed from glass and steel. It's slim-line shape means it perfectly complements residential and commercial spaces.

Burner Ventilation and Efficiency*

Dimensions L x W x H mm/in	Compatible Burner	Fuel Capacity	Heats on Average (Indoors)	Thermal Output Net (MAX)	Approx. Burn Time	Minimum Room Size
400 x 386 x 1106 15.7 x 15.2 x 19.8	AB3	2.5 L [0.7 Gals]	Over 20 m ² [215 ft ²]	6.14 MJ/h 5,800 BTU/h 1.7 kW	8 - 11 hours	40 m ³ [1,413 ft ³]

Application	Indoor & Outdoor
Surround Colours	<input type="radio"/> Stainless Steel ESF.D.GST <input type="radio"/> Black ESF.D.GST.BL
Burner Colours	<input type="radio"/> Stainless Steel <input type="radio"/> Black
Materials	Grade 304 Stainless Steel, Black High-temp Coated Stainless Steel, Toughened Glass, Grade 304 Stainless Steel Burner, with optional Black Ceramic Coating
Approx. Weight	35.6kg [78.2lbs] Weight includes burner.
Fuel Type	e-NRG Bioethanol / e-NRG.com



*These values are indicative only and may vary depending on the model purchased, installation, and the seasonal resource used to manufacture e-NRG. Decorative logs must NOT be placed directly over an open flame. They are designed to sit near heat but not over flames. (Logs not included). This model comes with fixing brackets for permanently locating into a fixed position. This model complies with existing standards in the USA, Europe, UK and Australia. UL Listed, EN 16647 BSI Certified and ACCC Safety Mandate compliant.



Private Residence, Japan
(Ghost in Stainless Steel)



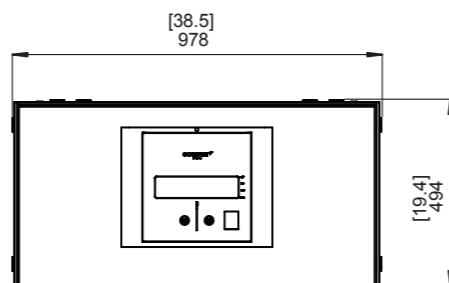
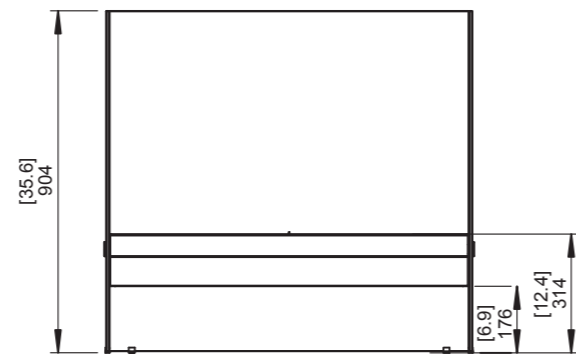
Igloo Specifications

Made entirely of glass and stainless steel, the Igloo is a sleek and modern update to the traditional fireplace.

Burner Ventilation and Efficiency*

Dimensions L x W x H mm/in	Compatible Burner	Fuel Capacity	Heats on Average (Indoors)	Thermal Output Net (MAX)	Approx. Burn Time	Minimum Room Size
978 x 494 x 904 38.5 x 19.4 x 35.6	BK5	5 L [1.3 Gals]	Over 35 m ² [376.7 ft ²]	14 MJ/h 13,000 BTU/h 3.5 kW	7 - 11 hours	70 m ³ [2,472 ft ³]

Application	Indoor & Outdoor
Surround Colours	<input type="radio"/> Stainless Steel <input type="radio"/> ESF.D.IGL
Burner Colours	<input type="radio"/> Stainless Steel
Materials	Grade 304 Stainless Steel, Toughened Glass, Grade 304 Stainless Steel Burner
Approx. Weight	54.1kg [118.9lbs] Weight includes burner.
Fuel Type	e-NRG Bioethanol / e-NRG.com



*These values are indicative only and may vary depending on the model purchased, installation, and the seasonal resource used to manufacture e-NRG. This model complies with existing standards in the USA, Europe, UK and Australia. UL Listed, EN 16647 BSI Certified and ACCC Safety Mandate compliant.



Lumiere, Sydney Australia
The Igloo is a sleek, modern update to the traditional fireplace, and its clear frame allows it to blend in with any decor while simultaneously enhancing it.

Around the World

EcoSmart Fire is represented by an extensive network of distributors, resellers and agents around the world. If you can't find who you are looking for, or someone close to you, visit ecosmartfire.com

EcoSmart Fire is designed and manufactured by MAD Design Group.

Interested in representing or retailing EcoSmart Fire in your country? Contact your local distributor or our Head Office today.

Reproduction of this catalogue in any manner, in any language, in whole or in part without prior written permission is prohibited. MAD Design Group reserves the right to correct any errors or misprints. All product specifications and data are subject to change without notice and believed to be correct at the time of publication. MAD Design Group, its affiliates, agents, and employees, and all persons acting on its or their behalf (collectively, "MAD Design Group"), disclaim any and all liability for any errors, inaccuracies or incompleteness contained herein or in any other disclosure relating to any product. MAD Design Group disclaims any and all liability arising out of the use or application of any product described herein or of any information provided herein to the maximum extent permitted by law. The product specifications do not expand or otherwise modify MAD Design Group's terms and conditions of purchase, including but not limited to the warranty expressed therein, which apply to these products. No license, express or implied, by estoppel or otherwise, to any intellectual property rights is granted by this document or by any conduct of MAD Design Group. Customers using or selling MAD Design Group products not expressly indicated for use in such applications do so entirely at their own risk and agree to fully indemnify MAD Design Group for any damages arising or resulting from such use or sale. Please contact authorised personnel from MAD Design Group to obtain written terms and conditions regarding products designed for such applications. International Patent Pending – Trademarks Pending – All Designs Registered. V0421
