

Built-in

Bioethanol Burners

- > Create a one-of-a-kind custom design
- > Minimal clearances for ultimate flexibility
- > Easy installation - drop into place
- > Install a single burner or side-by-side for a linear flame
- > Available in Stainless Steel or Black

ecosmart⁺
Fire



Burner Collection

EcoSmart Burners come in a range of shapes and sizes depending on the style you want to achieve.



1 + 2. XL Burners
Our most popular series. Linear fire features with minimal clearance requirement providing the freedom to create a stunning horizontal piece of architecture.

3. BK5 Burner
BK5's compact design enables it to be integrated into individual fire designs for indoor and outdoor spaces.

4. AB Burners
Round-shaped and compact, providing design freedom for a myriad of tailor-made installations.

5. VB2 Burner
Whether an Edwardian, Federation, Art Deco or Art Nouveau fireplace, the VB2 has been designed to be easily integrated into existing fireplaces. Convert an older style fireplace into a clean-burning bioethanol fire. (N/A in all countries.)

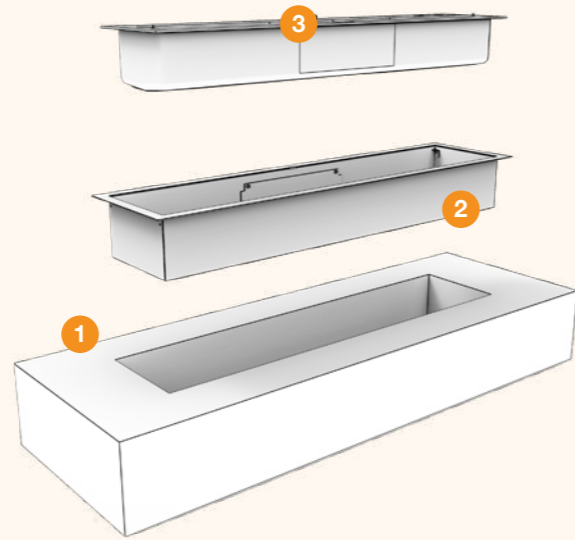
Burner Specifications

Collection	Dimensions L x W x D mm/in	Fuel Capacity	Heats on Average (Indoors)	Fuel Consumption	Thermal Output Net (MAX)	Approx. Burn Time	Minimum Room Size (per burner)
XL1200	1253 x 248 x 124 49.3 x 9.8 x 4.9	10 L [2.6 Gals]	Over 65 m ² [700 ft ²]	0.87 L/h [0.23 Gal/h]	17 MJ/h 15,290 BTU/h 4.5 kW	9 - 14 hours	115 m ³ [4,061 ft ³]
XL900	961 x 248 x 124 37.8 x 9.8 x 4.9	9 L [2.4 Gals]	Over 60 m ² [645 ft ²]	0.8 L/h [0.21 Gal/h]	16 MJ/h 15,000 BTU/h 4.4 kW	8 - 13 hours	110 m ³ [3,884 ft ³]
XL700	753 x 248 x 124 29.6 x 9.8 x 4.9	7 L [1.8 Gals]	Over 50 m ² [538 ft ²]	0.7 L/h [0.18 Gal/h]	14.5 MJ/h 13,650 BTU/h 4 kW	9 - 12 hours	90 m ³ [3,178 ft ³]
XL500	553 x 248 x 124 21.8 x 9.8 x 4.9	5 L [1.3 Gals]	Over 40 m ² [430.6 ft ²]	0.5 L/h [0.13 Gal/h]	12 MJ/h 11,430 BTU/h 3.35 kW	10 - 13 hours	80 m ³ [2,825 ft ³]
XS340	382 x 232 x 107 15 x 9.1 x 4.2	2.5 L [0.7 Gals]	Over 20 m ² [215 ft ²]	0.45 L/h [0.12 Gal/h]	8.93 MJ/h 8,530 BTU/h 2.5 kW	5 hours	45 m ³ [1,589 ft ³]
BK5	400 x 317 x 123 15.7 x 12.5 x 4.8	5 L [1.3 Gals]	Over 35 m ² [376.7 ft ²]	0.64 L/h [0.17 Gal/h] on MAX	14 MJ/h 13,000 BTU/h 3.5 kW	7 - 11 hours	70 m ³ [2,472 ft ³]
AB8	402 x 402 x 159 15.8 x 15.8 x 6.3	8 L [2.1 Gals]	Over 60 m ² [645 ft ²]	1.1 L/h [0.29 Gal/h]	21.56 MJ/h 20,433 BTU/h 5.99 kW	7 - 9 hours	116 m ³ [4,096 ft ³]
			Over 30 m ² [322.9 ft ²]	0.7 L/h [0.18 Gal/h]	13.9 MJ/h 12,860 BTU/h 3.77 kW	9 - 11 hours	
AB3	291 x 291 x 101 11.5 x 11.5 x 4	2.5 L [0.7 Gals]	Over 20 m ² [215 ft ²]	0.31 L/h [0.1 Gal/h]	6.14 MJ/h 5,800 BTU/h 1.7 kW	8 - 11 hours	40 m ³ [1,413 ft ³]
VB2	330 x 110 x 112.5 13 x 4.3 x 4.4	2 L [0.5 Gals]	Over 15 m ² [161 ft ²]	0.5 L/h [0.13 Gal/h]	7.24 MJ/h 6,180 BTU/h 2.5 kW	6 hours	45 m ³ [1,589 ft ³]

**To comply with EN 16647 the AB8 Efficiency Ring and Top Tray must be installed before operating the burner.

Burner Installation Guide*

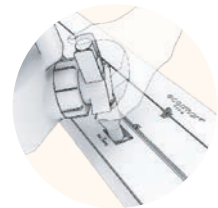
EcoSmart Burners can be installed just about anywhere - in 3 simple steps.



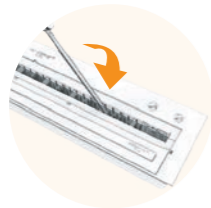
Burner Installation Guide

1. Build burner cut-out and surrounds from non-combustible materials
2. Insert Top Tray (If applicable)
3. Drop in the burner

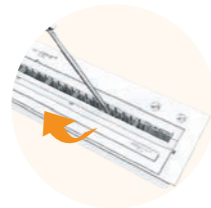
Now time to light! (Guide only)



Safely fill burner with e-NRG fuel



Dip the lighting rod tip into the burner



Lift the lighting rod out of the burner



Use lighter to ignite lighting rod



Dip ignited lighting rod back into the Burner



Simply close burner lid to turn burner off

*GUIDE ONLY - must read the instructions included with the model.



Built-in Bioethanol Burners

XL Burner Inspiration

1. Commercial Space, Japan Model: XL1200

A comforting and inviting customer experience is delivered with the inclusion of an open fire in this stunning Tokyo commercial showroom.

2 Private Residence, Australia Model: XL1200

Stylish and perfectly integrated into a customised setting to create a warm space that draws you in.

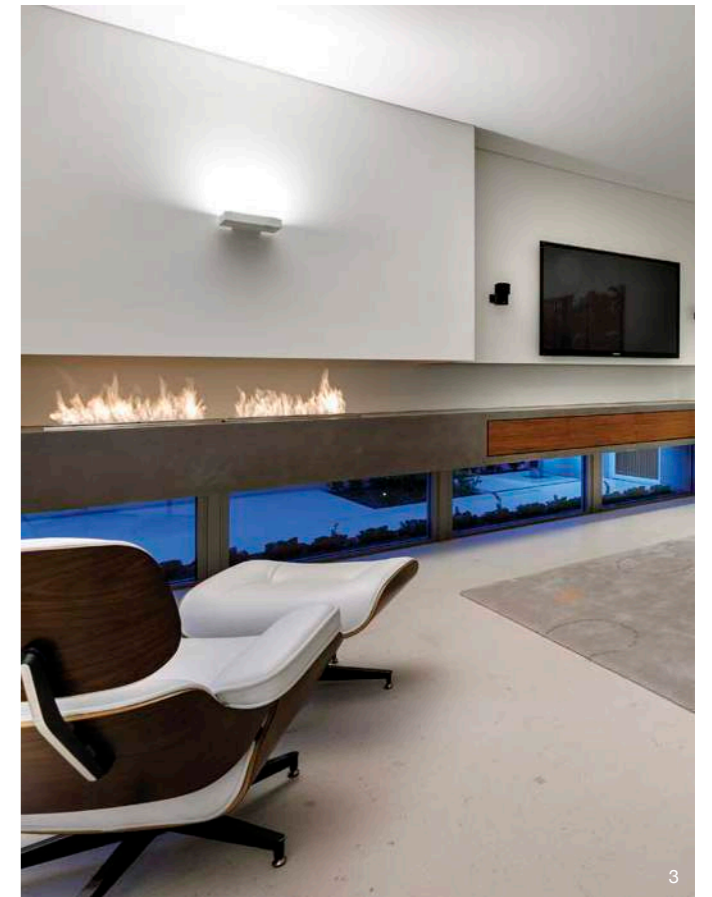
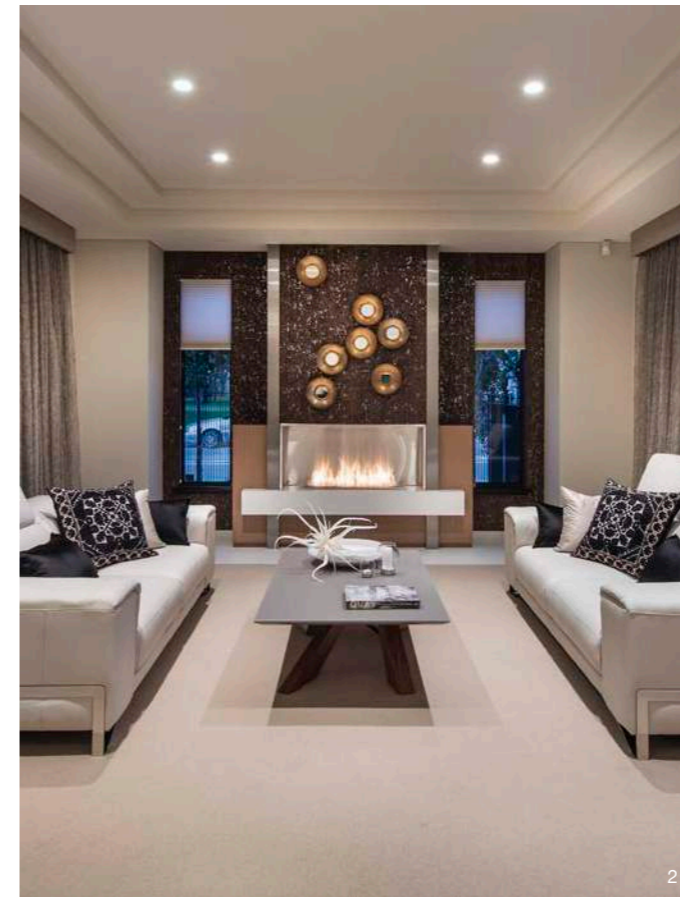
3. McGrath Real Estate Office, Australia

Model: XL1200

Designed by The United Collective and built by The Outfit Group for McGrath real estate agency, this custom joinery is beautifully contrasted with hints of golden accents and a lively orange flame at its center. The use of dark tones and white marble surround creates an elegant focal point that is subtle, yet visually striking.



Built-in Bioethanol Burners



1. Scott Salisbury Homes, Australia
Model: 1200DB (discontinued).
Achieve similar look with XL900
A great example of connecting indoor and outdoor spaces. This two-way Fireplace can be seen and experienced from the lounge and outdoor areas simultaneously.
Photos: Scott Salisbury Homes

2. Churchlands Residence, Perth Australia
Model: XL900
At the centre of this custom built home is a fire design that inspires and encourages family gathering, without a TV in sight.

3. Floreat Residence, Perth Australia
Model: XL900 x 2
Pairing multiple burners creates an elongated flame that provides a visual counterbalance to particularly large spaces and rooms with high ceilings.

Built-in Bioethanol Burners



EcoSmart Burners give you freedom to have your TV above your fireplace.

1. Rising Glen, USA

Model: XL900 x 2

For acclaimed Los Angeles architect Michael Parks, the vision behind 'Rising Glen' – a striking home in the Hollywood Hills – was to create a warm, liveable, inviting paragon of modern architecture.

[Case Study available on our website](#)

2. Private Residence, Japan

Model: XL900

Drawing the gaze towards traditional Japanese seiza-style furniture placement is EcoSmart's low-slung fire feature, which showcases a rectangular XL900 Burner.

3. Buildwise, Australia

Model: XL900

An increasingly popular trend - integrated units featuring open fire with audio visual systems - is easy with EcoSmart's zero-clearance, flue-less fire solutions.



Built-in Bioethanol Burners

1. Keio Plaza Hotel, Japan Model: XL900

This Japanese hotel is known for its architectural design, streamlined facilities and world-class style – the same qualities that can be found in EcoSmart's XL900 fire feature.

2. Nagoya University of Commerce & Business, Japan Model: XL900 x 3

A traditional wood-burning hearth is modernised with an EcoSmart fire feature comprised of three linear XL900 Burners that create one long impressive flame.



Built-in Bioethanol Burners



**1. The Brindabella, Perth Australia
Model: XL900**

This stunning double-sided fire feature is testament to what can be achieved when an ingenious design satisfies both the functional and aesthetic demands of a brief.

**2. Fujiya Mansions, Hong Kong
Model: XL900 x 2**

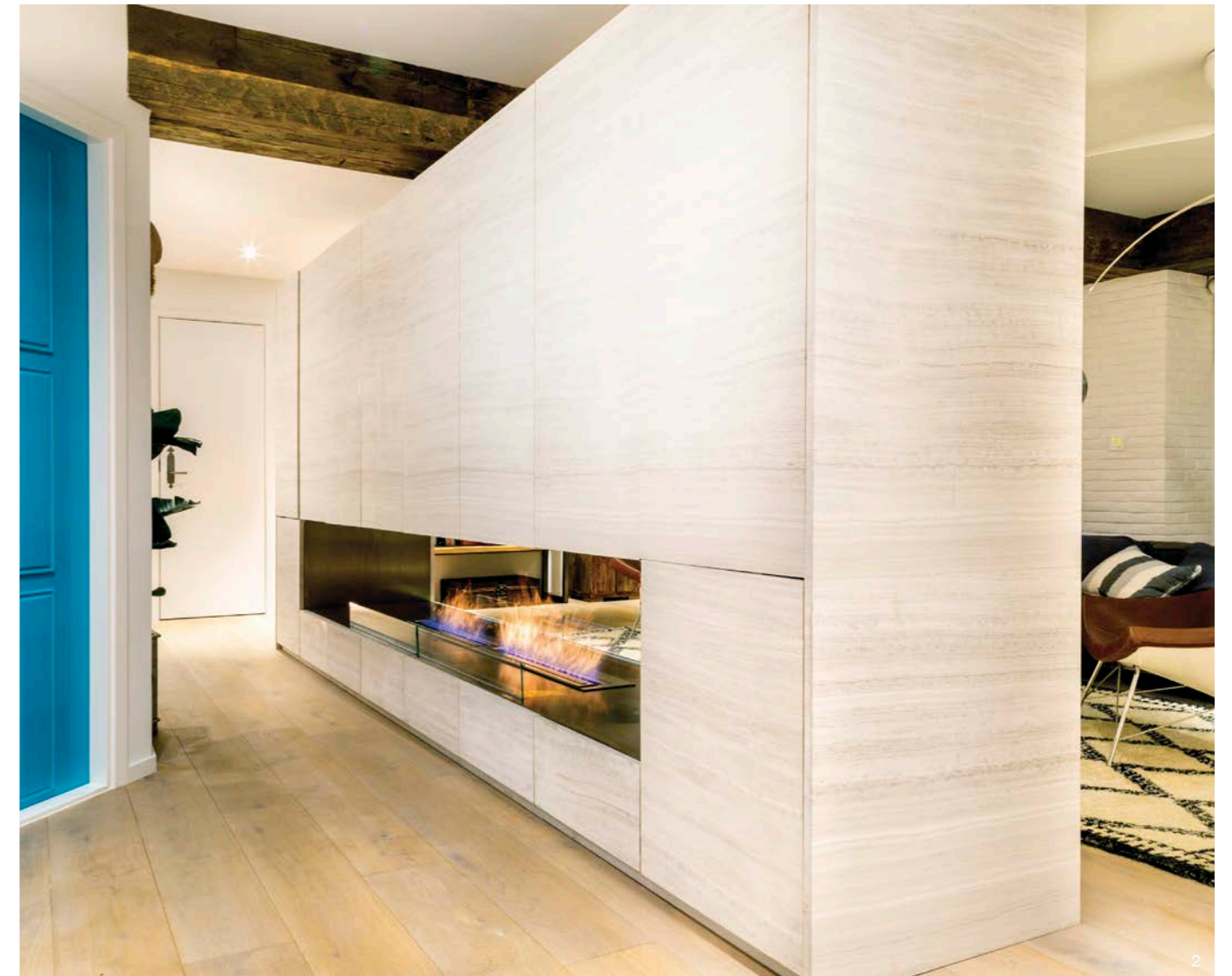
Captivating from both sides, this custom EcoSmart Fire is the hero of the room, but without detracting from the cleverly integrated entertainment system behind the beautiful folding doors.

[Case Study available on our website](#)



“The burners take the piece from ordinary to extraordinary.”

ROSIE BLAY, LIQUID DESIGN



Built-in Bioethanol Burners



1. Rising Glen, USA

Model: XL900

A functional room divider becomes a stunning design feature with a peninsular fireplace that helps define the space without dominating it. Glass screens protect the flame from breezes without obstructing the view while the smoke-free flame ensures the white walls and chic furnishings remain unsullied.

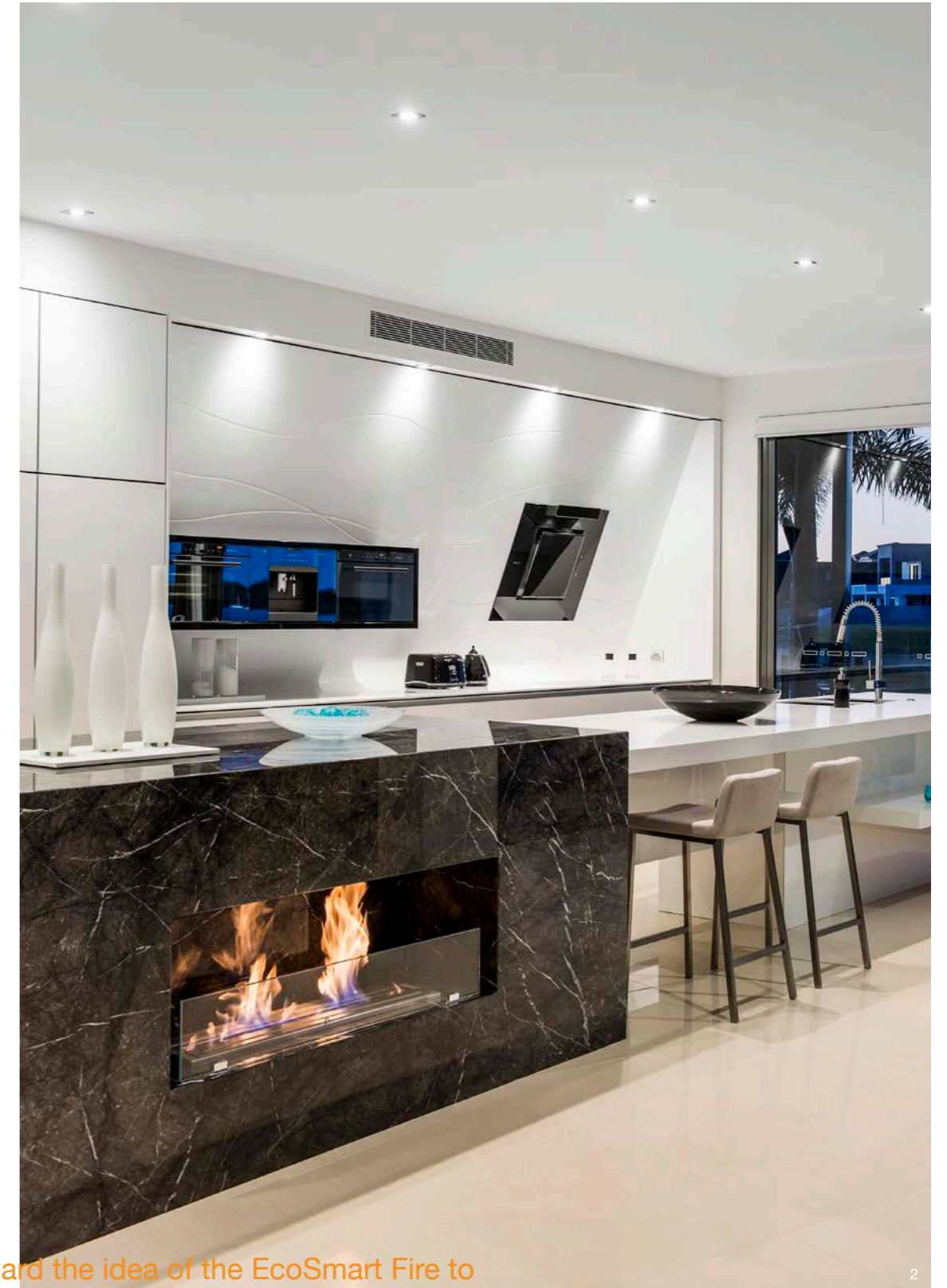
[Case Study available on our website](#)

2. Enigma Interiors, Australia

Model: XL900

EcoSmart Fires have been cleverly used to create some distinctive kitchen designs – and this one in Queensland, with its emphasis on quality fittings and appliances, is no exception.

[Case Study available on our website](#)



“I put forward the idea of the EcoSmart Fire to bring more warmth and character into the room. I believe fire is engaging and inviting.”

LEE HARDCASTLE, ENIGMA INTERIORS

Built-in Bioethanol Burners

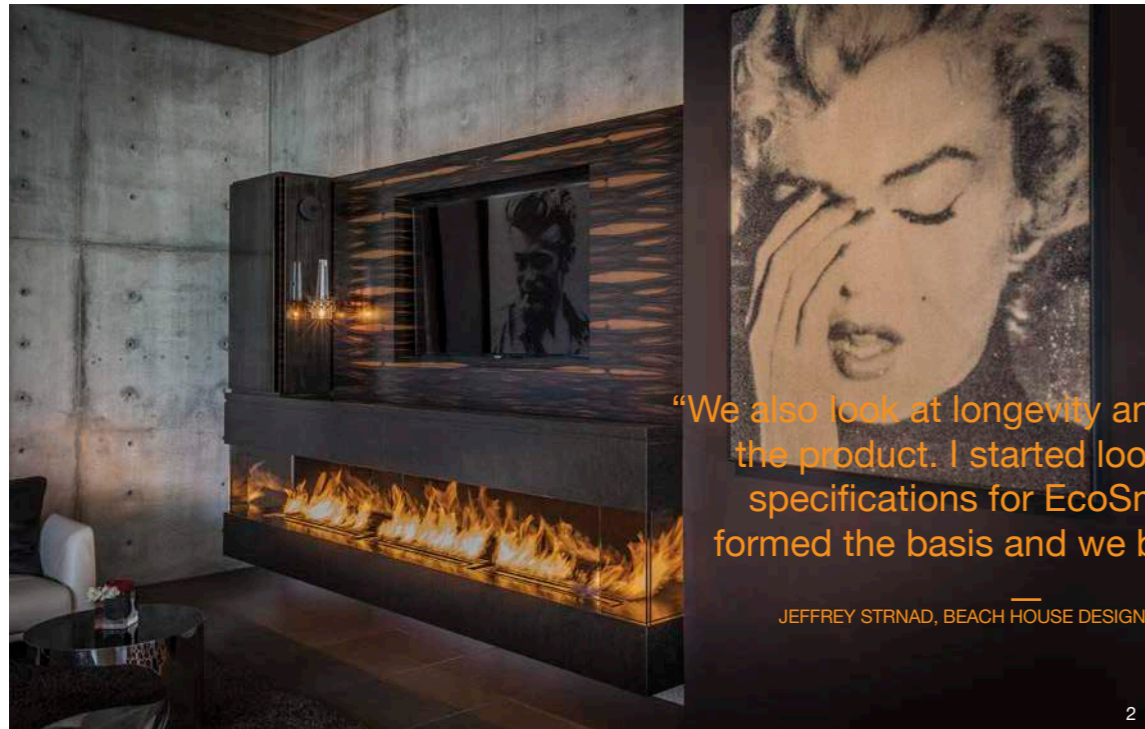


1. Stillhof Design Centre, Germany
Model: XL900 x 3
Designer fireplaces incorporating EcoSmart Fire are a key component of the innovative Stillhof Showroom in Munich, which has become an international design hub for modern architecture.
Photo: G. Hammerbacher

2. Hillside Residence, USA
Model: XL900 x 3
Beach House Design and Development was engaged to construct a combination fireplace and AV cabinet within a space made up of 12" poured-in-place concrete walls and a rooftop pool above – with absolutely no way to vent the fireplace. Enter EcoSmart Fire.

[Case Study available on our website](#)

3. Private Residence, Japan
Model: XL900 x 3
(Featuring: Twin Feet Fixings and Custom Fire Screen)
This fireplace showpiece featuring three EcoSmart XL900 Burners positioned side-by-side creates a captivating living room entrance. Stacked stone surrounds are softened by the smoke- and soot-free flickering flame, which is fuelled by eco-friendly e-NRG bioethanol.



“We also look at longevity and durability of the product. I started looking at all the specifications for EcoSmart and that formed the basis and we built around it.”

JEFFREY STRNAD, BEACH HOUSE DESIGN AND DEVELOPMENT

Built-in Bioethanol Burners



1. Private Residence, USA
Model: XL900 x 2
The presenter of US documentary show 'Our America' had clear views about the design of her new home – and it has now become the first-ever energy neutral residence in Santa Monica, California.

[Case Study available on our website](#)

2. The Brindabella, Australia
Model: XL900
This outdoor entertaining area designed by Webb & Brown-Neaves is indicative of their commitment to building every home as if it were their own.

3. Portsea Pool Pavilion, Australia
Model: XL900
The elements of fire and water conspire to create a spectacular setting for a floating pool pavilion in Portsea, Victoria, where an EcoSmart XL900 Burner has been used.
Architects: Jason Camenzuli & Peter Collings from CLP Architecture
Builders: KLE Building Group
Joinery: Krueger Shopfitters
Photo: Jason Camenzuli

[Case Study available on our website](#)



“Fire was incorporated as a dramatic contrasting element to water, as the two traditional elements help create an aesthetic tension and drama at night.”

JASON CAMENZULI,
CLP ARCHITECTURE PTY LTD



Built-in Bioethanol Burners



St Regis Hotel, Istanbul Turkey
Opposite Page: XL900 x 3
This Page: XL500 x 2

Istanbul's modernist Art Deco-influenced St. Regis uses EcoSmart's stunning fire feature in its Petit "O" Bar (above), which offers a formal setup during the day before transforming into a relaxed lounge area when the sun goes down.

Located next door is the hotel lobby (left), which greets guests with a wall of flickering flame courtesy of three XL900 Burners. EcoSmart's longest linear burner creates a stunning horizontal piece of architecture when grouped for maximum effect.

Built-in Bioethanol Burners



Private Residence, Australia
Model: XL700
Credits: SJS Interior Design
Photo: Simon Whitebread Photo

Built-in Bioethanol Burners



1. Private Residence, Australia Model: XL700

A minimal design approach subtly highlights a flame making it the focal point of the space. In this installation on Victoria's Mornington Peninsula, the use of neutral colours of black, white and grey offers an inviting yet simple setting where a warm flame can be enjoyed in all areas of the room.

2. Private Residence, Australia Model: XL700

(Featuring: Twin Feet Fixings and Custom Fire Screen)
A beautiful installation executed by Webbs Joinery and designed by Connors & Co for a client in Tamarama, Sydney. This project features the EcoSmart XL700 Burner in black including Twin Feet Fixings supporting a custom made fire screen.

Built-in Bioethanol Burners

“The fireplace is the center element of the lounge, creating a focal point that divides the seating groups. It’s the feature that can be seen from all areas of the space and enhances the warmth of the walnut panelled room.”

MEAGHAN WREN, MEYER DAVIS STUDIO



1. AKA Hotel, New York USA Model: XL700

The intimate lounge artfully complements the traditional warmth of New York's AKA Sutton Place with a relaxing yet of-the-moment ambiance. Numerous cozy seating areas, a spectacular marble bar and open fireplace created with an XL Burner completes the stylish scene.

[Case Study available on our website](#)

4. Midorinokaze Resort Kitayuzawa, Japan Model: XL700

The Noguchi Collection Relaxation Library at the Midorinokaze Resort features ultra-comfortable sofas arranged to put your mind and body at ease, with EcoSmart's mesmerising, flickering flame creating an enticing atmosphere.



Built-in Bioethanol Burners



1. Private Residence, UK
Model: XL700
Purpose-designed baffle inserts allow homeowners to regulate and stabilise the flame while simultaneously increasing fuel efficiency.

2. Private Residence, UK
Model: XL700
EcoSmart Fire's elongated flame creates an instant focal – and talking – point for living spaces.

3. The Estreal, Japan
Model: XL700 x 4
A sophisticated take on the traditional fireplace, this indoor fire feature utilises four elongated XL Burners to create a captivating conversation pit that attracts guests with its flickering flame and soothing warmth.



Built-in Bioethanol Burners



“I use EcoSmart Fire burners because they’re beautifully and thoughtfully designed, well-built and clean burning, which embodies the sustainability values I adhere to in my work.”

JAMIE HUFFMAN, FURNITURE DESIGNER



1. Longitude 131°, Australia
Model: XL700
This luxury award-winning resort overlooking Uluru in Outback Australia incorporates EcoSmart’s fire features in its elevated tents, providing a stunning feature on the timber deck and enabling the guests to soak up the serene atmosphere.
Top photo: George Apostolidis
Bottom photo: Julian Kingma

[Case Study available on our website](#)

2. Private Residence, California USA
Model: XL700 x 2
San Diego custom furniture designer Jamie Huffman has long embraced the element of fire, often incorporating them into his innovative designs.

[Case Study available on our website](#)

Built-in Bioethanol Burners

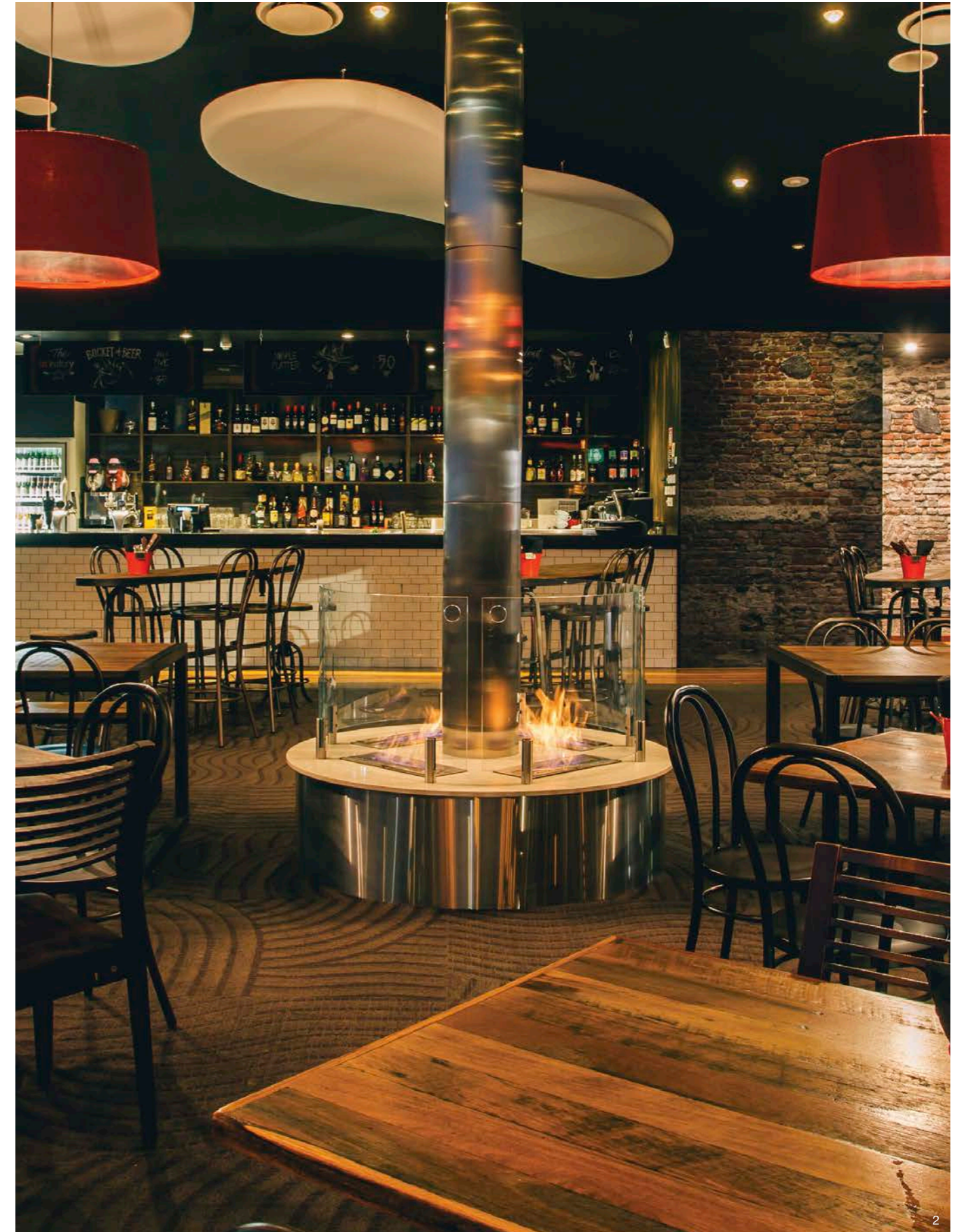


1. Junction Moama, Australia
Model: XL500 x 3
(Featuring: Twin Feet Fixings and Custom Fire Screens)
Hospitality creates an ideal environment for guests, and accounts for how the food, drink and aesthetics shape mood. In this case, EcoSmart's atmospheric fire feature further enhances the restaurant's reputation as a "gathering place that celebrates the region's finest."

[Case Study available on our website](#)

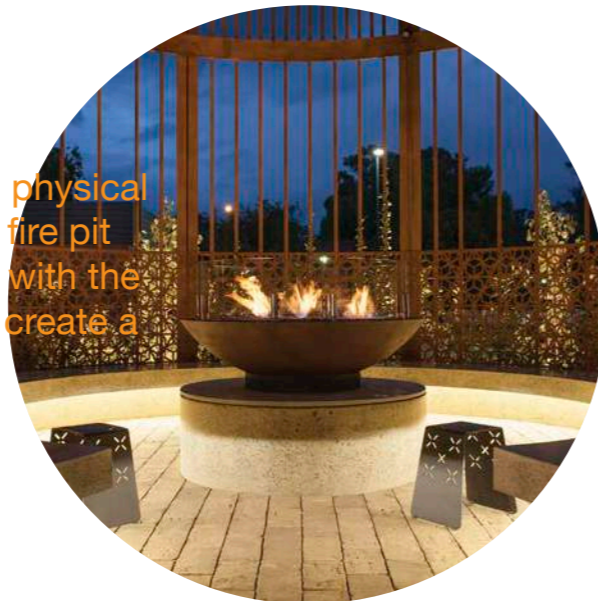
2. [m]eatery, Australia
Model: XL500 x 4
(Featuring: Twin Feet Fixings and Custom Fire Screens)
This installation has stood the test of time. Formerly Rocksalt Bar & Grill, now [m]eatery, the fire re-design was the only element that was retained in the redesign.

[Case Study available on our website](#)



"The fire needed to offer both visual and physical comfort so patrons can sit around the fire pit with a glass of wine. The fire works well with the pit design and natural stone pebbles to create a gathering space."

VICTOR CHEUNG, ARCHITECT



Built-in Bioethanol Burners

1. Toca Madera, USA

Models: XS340

Located in a Los Angeles restaurant “conceived around a communal dining philosophy”, EcoSmart’s twin bioethanol burners create a captivating see-through effect between eating and entertainment spaces. Enhancing Hollywood’s latest hotspot is a series of flickering flames that work well with the earthy colour tones.



2. Hilton, New Zealand

Model: XS340 x 3

(Featuring: Twin Feet Fixings and Custom Fire Screens)

A centralized fireplace that provides the perfect setting for a relaxed lounge area. A real drawcard.

3. Hippo Creek African Grill, Perth Australia

Model: XS340 x 3

Cleverly tailored EcoSmart Burners are helping set the scene for this vibrant African grill themed restaurant in Perth.

[Case Study available on our website](#)



“We use [EcoSmart Fire] as a point of differentiation for a client’s dining area, depending on the style and theme of the restaurant.”

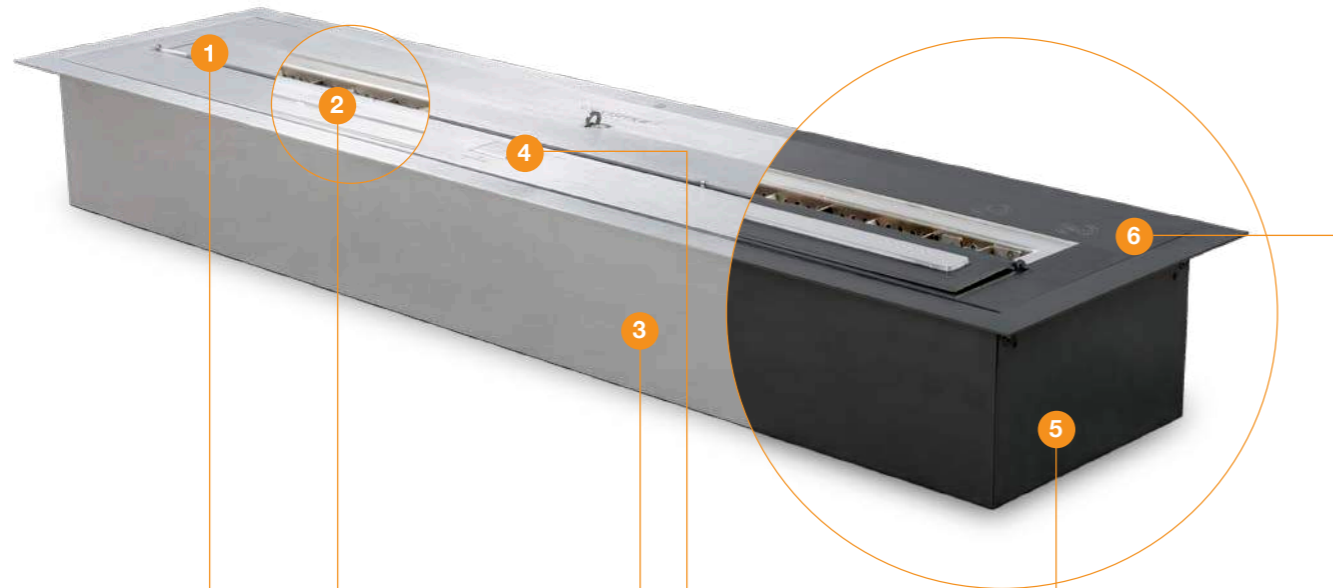
MIKE BOOTH, BREMICK DESIGN + BUILD



Built-in Bioethanol Burners

XL Burner Series Features & Benefits

Our award-winning Burners - the chambers that house the fuel - are at the core of all EcoSmart Fires.



1. Flip Lid Shut Off System

The series' 'flip lid' shut-off system fits perfectly across the ignition zone to extinguish the flame and, when it is open, denies access to the separated filling point as a deterrent to filling the burner while it is in operation.

A reliable and safe extinguishing system courtesy of a special shut-off mechanism and precision measurements.

2. Flame Regulation

Purpose-designed XL Burner Baffles allow you to regulate and further stabilise the flame at the same time as increasing fuel efficiency of the burner (N/A XS340 Burner).

3. High Quality

Crafted from high quality, 304 grade stainless steel, EcoSmart Fire burners are built to last a lifetime.

4. Dedicated Filling Point

A patented filling point is separated from the ignition zone and engineered so that the jerry can spout is fully supported prior to releasing the fuel supply. This eliminates the usual splash and spills that would otherwise occur when fuel is decanted into the burner while simultaneously reinforcing the maximum fill line within the burner (N/A XS340 Burner).

5. Top Tray

The Top Tray protects against heat transference and aids in the collection of accidental spillage.

To comply with EN 16647 the Top Tray must be installed before operating the burner.

6. Colour

Available in Stainless Steel and Black.



Included accessories to ensure safe operation



Jerry Can with Safety Spout and e-NRG Bottle Adaptor

Our 5L [1.3 Gall] Jerry Can will allow safe storing/decanting of the e-NRG Bioethanol used in the Burner.

The e-NRG adaptor is used to connect the Safety Spout to an e-NRG bottle (N/A in all countries).



Lighter & Lighting Rod

The Lighting Rod is designed to enable you to safely adjust the slider position on the Burner at any time. It is also used for the ignition procedure.



XL Baffles

(N/A XS340)

Placed over the internal burner vents, they serve to increase the efficiency of the burner as well as further stabilise the flame.



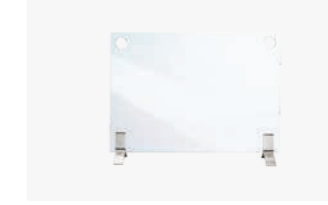
Burner Top Tray

The Top Tray protects against heat transference and aids in the collection of accidental spillage.



Optional Accessory Decorative Black Glass Charcoal*

Our Black Glass Charcoal is made from high-quality tempered glass.



Optional Accessory Plasma Fire Screen

The Plasma is supported by simple stainless steel feet that are clamped to the base of the flat pane of glass, elevating the screen as if floating while providing enhanced stability.



Optional Accessory Twin Feet Fixings

Designed to lock a glass fire screen into position, these stainless steel feet provide permanent stability.

Available in 5 sizes

The XL Series includes our longest burner XL1200 (10L Burner), followed by the XL900 (9L Burner), XL700 (7L Burner), XL500 (5L Burner) and the smallest in the series, XS340 (2.5L Burner).

The Perfect Fit

The streamlined design of the products synchronises effortlessly within award-winning architectural projects.

Design Versatility

Easily integrated into bespoke settings - from specially-made cabinetry, media units, walls, floating benches and pillars. You have the freedom to be creative.

No Flue, No Chimney, No Vent

Fuelled by clean-burning e-NRG bioethanol our burners produce a beautiful orange flame without any smoke, soot or ash.

Easy to Clean

Our bioethanol burners can be washed in hot water (or even put in your dishwasher), a key competitive difference.

Global Compliance

All burners are UL Listed in accordance with ANSI/UL1370 in the USA, Certified by BSI in accordance with EN16647, and comply with the ACCC Safety Mandate for Australia.

**Decorative media is not to be placed directly on top of the burner or anywhere they can interfere with the operation of the burner or the stability of flame.*

Built-in Bioethanol Burners

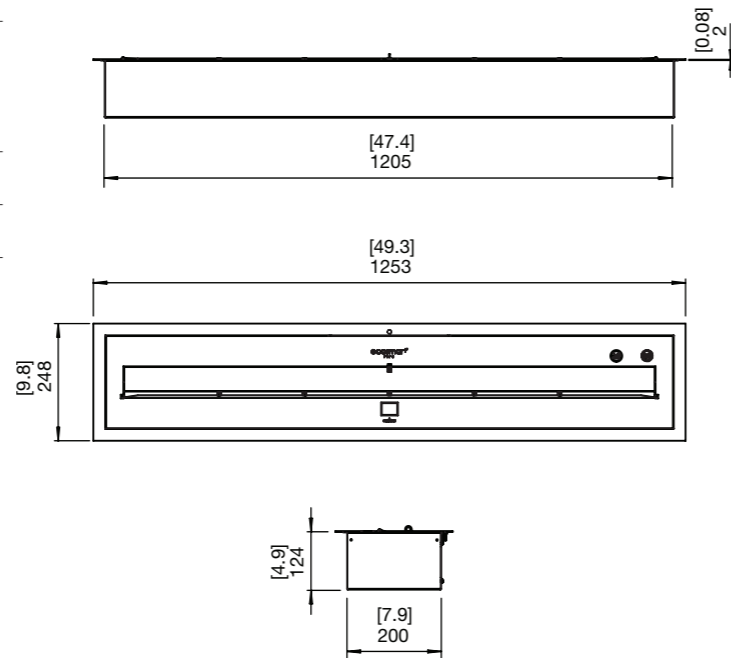
XL1200 Specifications

Our longest burner, the XL1200's linear features and absolute versatility enable the creation of stunning architectural masterpieces - and are easily installed.

Burner Ventilation and Efficiency*

Dimensions L x W x D mm/in	Fuel Capacity	Heats on Average (Indoors)	Fuel Consumption	Thermal Output Net (MAX)	Approx. Burn Time	Minimum Room Size (per burner)
1253 x 248 x 124 49.3 x 9.8 x 4.9	10 L [2.6 Gals]	Over 65 m ² [700 ft ²]	0.87 L/h [0.23 Gal/h]	17 MJ/h 15,290 BTU/h 4.5 kW	9 - 14 hours	115 m ³ [4,061 ft ³]

Application	Indoor & Outdoor
Burner Colours	 Stainless Steel ESF.B.XL12.WTT Black ESF.B.XL12.WTT.BL
Materials	Grade 304 Stainless Steel Burner, with optional Black Ceramic Coating, Grade 304 Stainless Steel Top Tray with optional Black Hi-Temp Powder-Coating
Approx. Weight	20.8kg [45.8lbs]
Fuel Type	e-NRG Bioethanol / e-NRG.com

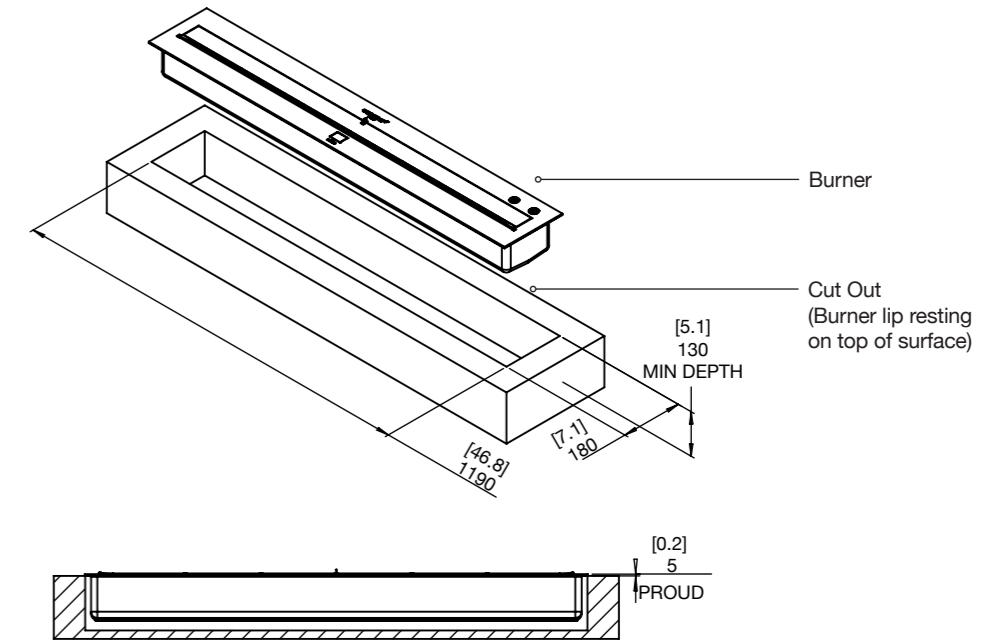


*These values are indicative only and may vary depending on the model purchased, installation, and the seasonal resource used to manufacture e-NRG. Read the manual carefully before operating the burner. Physical model dimensions should be verified against cut out dimensions BEFORE installation begins to confirm tolerances align. All burners are UL Listed in accordance with ANSI/UL1370 in the USA, Certified by BSI in accordance with EN16647, and comply with the ACCC Safety Mandate for Australia (except VB).

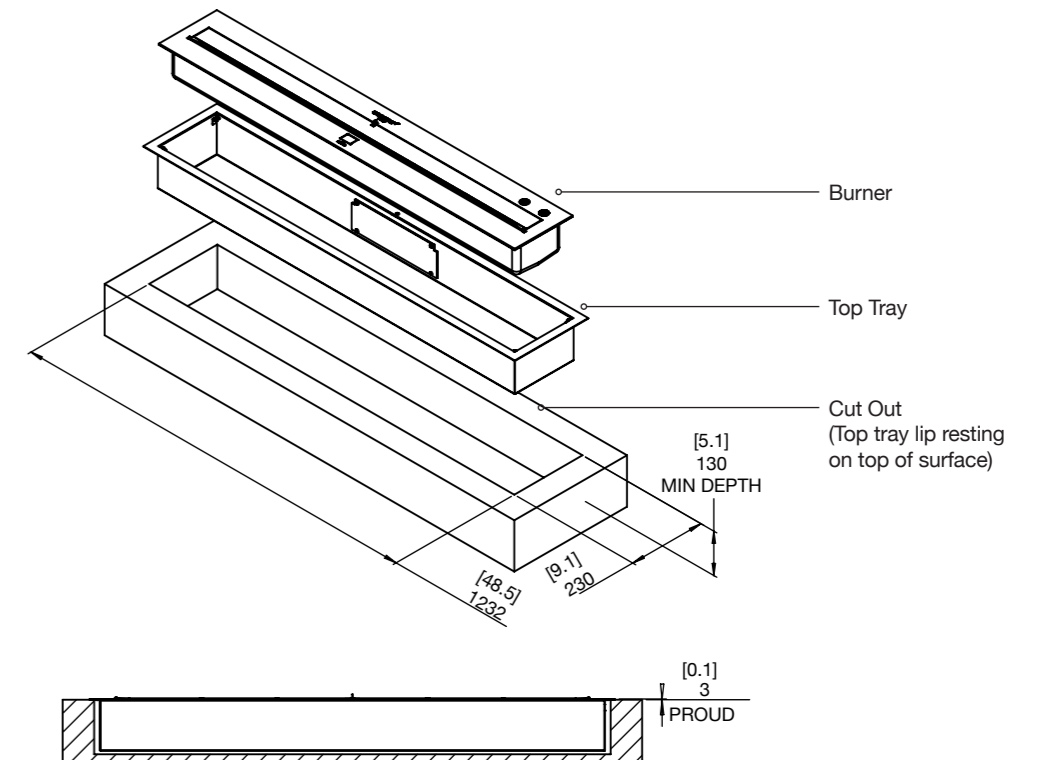
XL1200 Cut-out dimensions

Physical model dimensions should be verified against cut out dimensions BEFORE installation begins to confirm tolerances align.

Burner without Top Tray



Burner with Top Tray



Built-in Bioethanol Burners

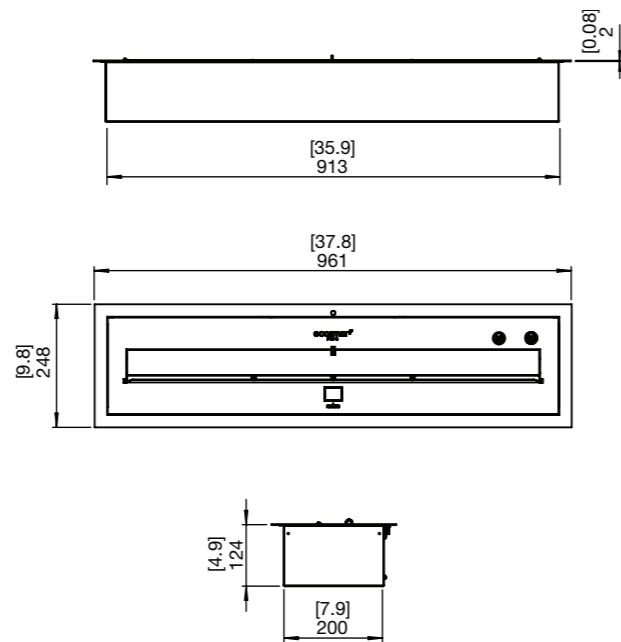
XL900 Specifications

Our award-winning XL900 was created to satisfy the demand for an elongated flame. It's the key feature of many indoor and outdoor fires around the world.

Burner Ventilation and Efficiency*

Dimensions L x W x D mm/in	Fuel Capacity	Heats on Average (Indoors)	Fuel Consumption	Thermal Output Net (MAX)	Approx. Burn Time	Minimum Room Size (per burner)
961 x 248 x 124 37.8 x 9.8 x 4.9	9 L [2.4 Gals]	Over 60 m ² [645 ft ²]	0.8 L/h [0.21 Gal/h]	16 MJ/h 15,000 BTU/h 4.4 kW	8 - 13 hours	110 m ³ [3,884 ft ³]

Awards	2009 Hearth & Home Vesta Award (USA)
Application	Indoor & Outdoor
Burner Colours	 Stainless Steel ESF.B.XL9.WTT Black ESF.B.XL9.WTT.BL
Materials	Grade 304 Stainless Steel Burner, with optional Black Ceramic Coating, Grade 304 Stainless Steel Top Tray with optional Black Hi-Temp Powder-Coating
Approx. Weight	16.2kg [35.6lbs]
Fuel Type	e-NRG Bioethanol / e-NRG.com

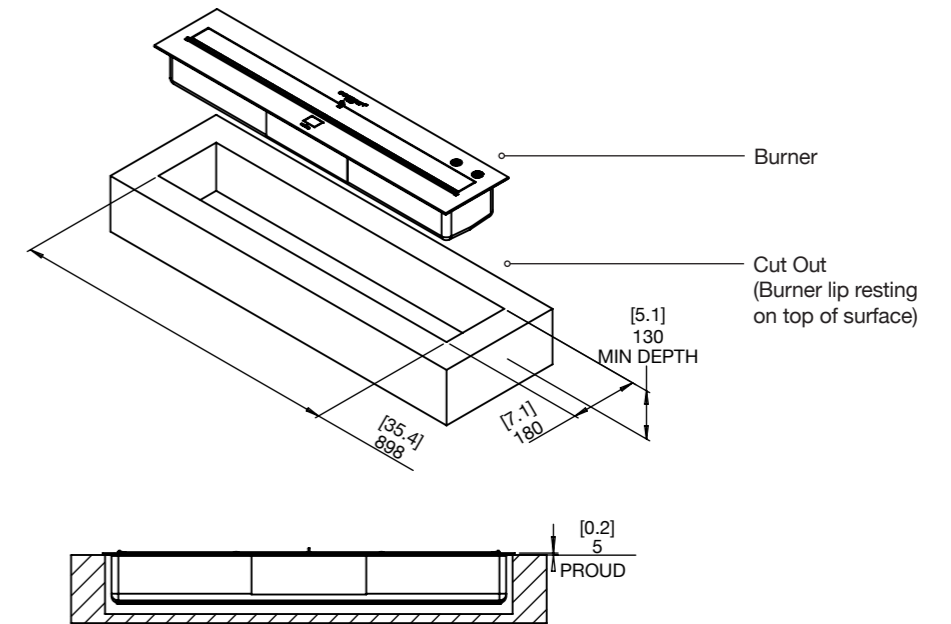


*These values are indicative only and may vary depending on the model purchased, installation, and the seasonal resource used to manufacture e-NRG. Read the manual carefully before operating the burner. Physical model dimensions should be verified against cut out dimensions BEFORE installation begins to confirm tolerances align. All burners are UL Listed in accordance with ANSI/UL1370 in the USA, Certified by BSI in accordance with EN16647, and comply with the ACCC Safety Mandate for Australia (except VB).

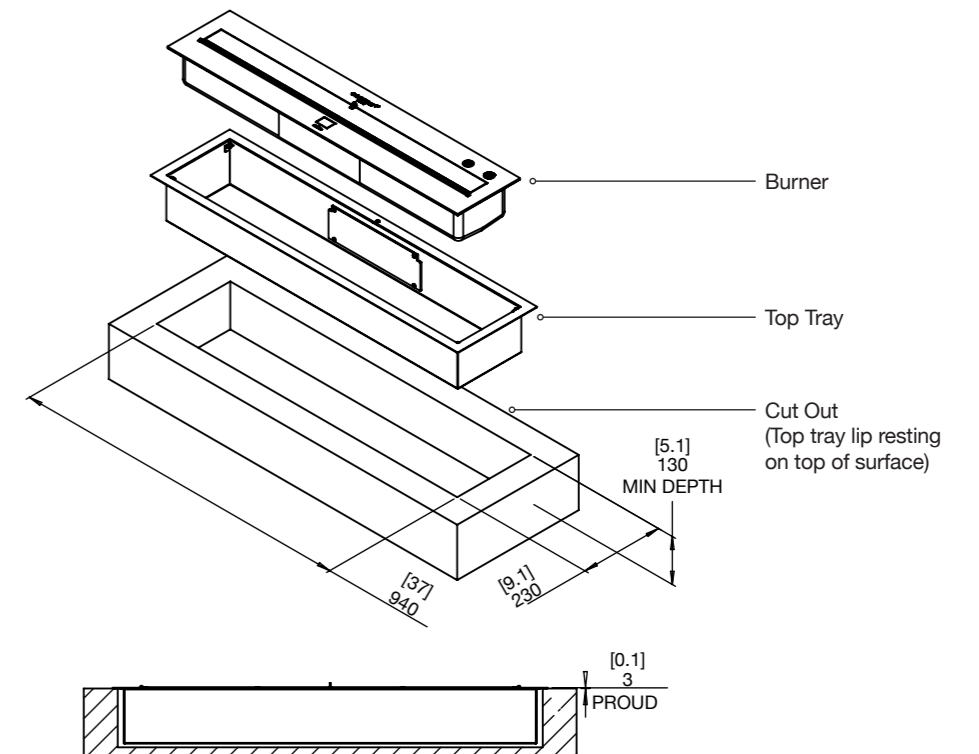
XL900 Cut-out dimensions

Physical model dimensions should be verified against cut out dimensions BEFORE installation begins to confirm tolerances align.

Burner without Top Tray



Burner with Top Tray



Built-in Bioethanol Burners

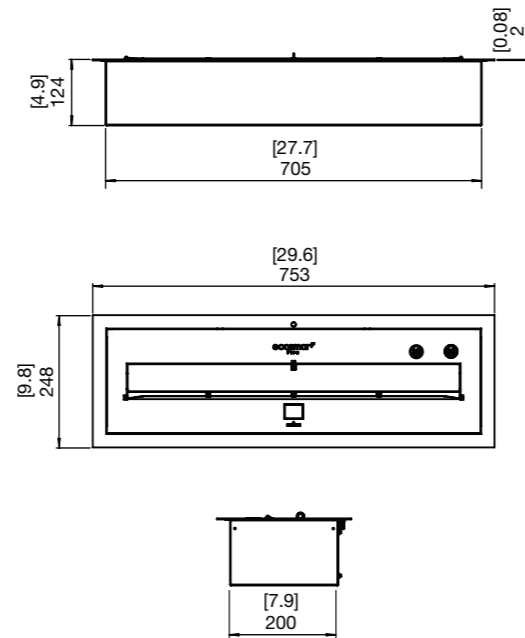
XL700 Specifications

The elongated, stainless steel XL700 bioethanol burner provides design inspiration for a myriad of custom-made fires – both indoors and out.

Burner Ventilation and Efficiency*

Dimensions L x W x D mm/in	Fuel Capacity	Heats on Average (Indoors)	Fuel Consumption	Thermal Output Net (MAX)	Approx. Burn Time	Minimum Room Size (per burner)
753 x 248 x 124 29.6 x 9.8 x 4.9	7 L [1.8 Gals]	Over 50 m ² [538 ft ²]	0.7 L/h [0.18 Gal/h]	14.5 MJ/h 13,650 BTU/h 4 kW	9 - 12 hours	90 m ³ [3,178 ft ³]

Application	Indoor & Outdoor
Burner Colours	 Stainless Steel ESF.B.XL7.WTT Black ESF.B.XL7.WTT.BL
Materials	Grade 304 Stainless Steel Burner, with optional Black Ceramic Coating, Grade 304 Stainless Steel Top Tray with optional Black Hi-Temp Powder-Coating
Approx. Weight	12.5kg [27.6lbs]
Fuel Type	e-NRG Bioethanol / e-NRG.com

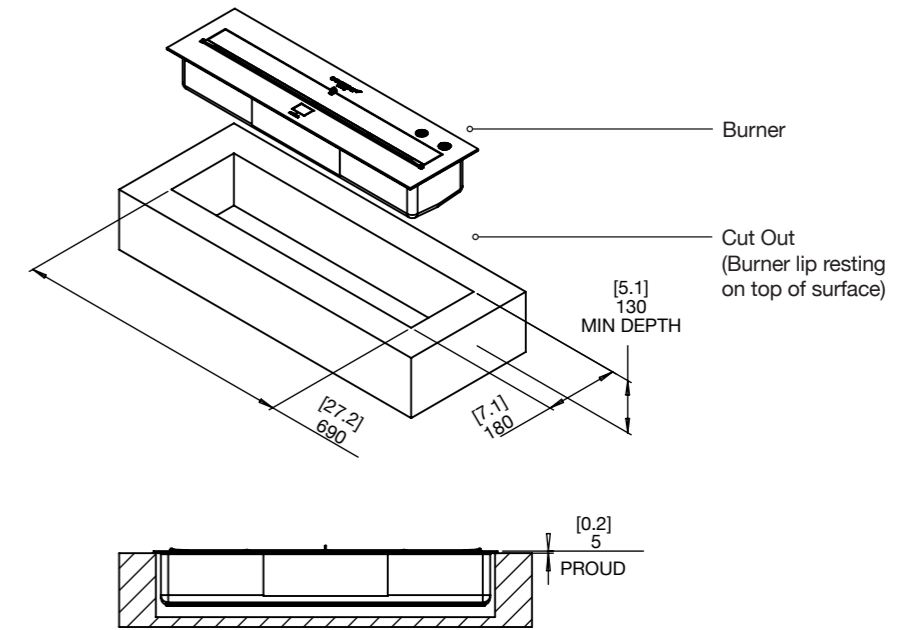


*These values are indicative only and may vary depending on the model purchased, installation, and the seasonal resource used to manufacture e-NRG. Read the manual carefully before operating the burner. Physical model dimensions should be verified against cut out dimensions BEFORE installation begins to confirm tolerances align. All burners are UL Listed in accordance with ANSI/UL1370 in the USA, Certified by BSI in accordance with EN16647, and comply with the ACCC Safety Mandate for Australia (except VB).

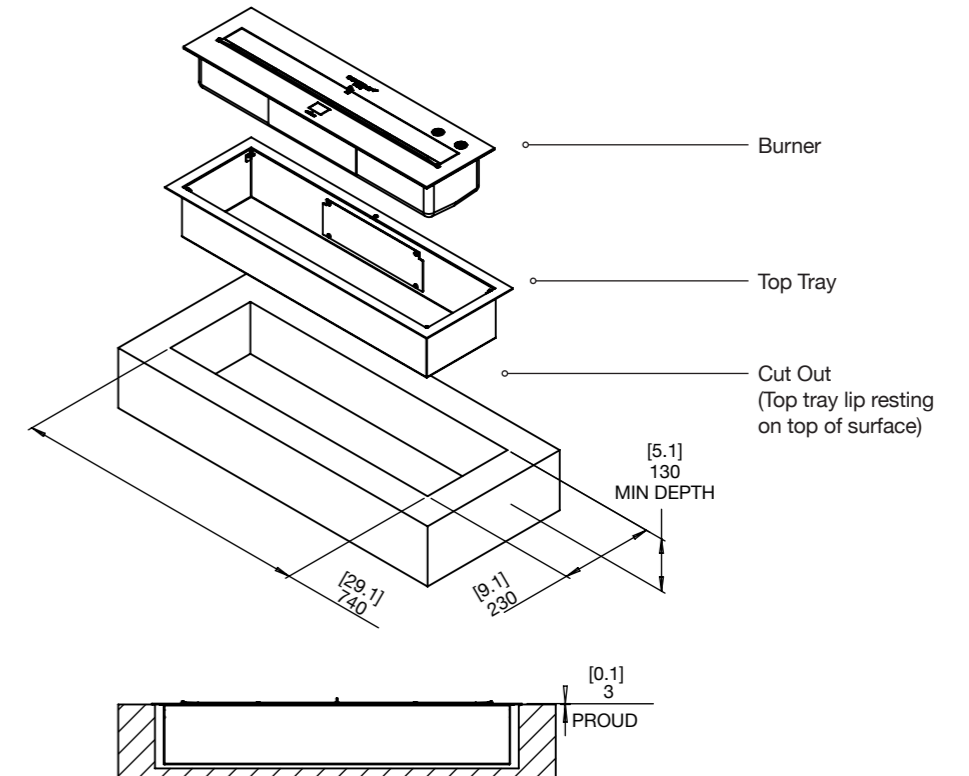
XL700 Cut-out dimensions

Physical model dimensions should be verified against cut out dimensions BEFORE installation begins to confirm tolerances align.

Burner without Top Tray



Burner with Top Tray



Built-in Bioethanol Burners

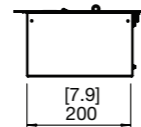
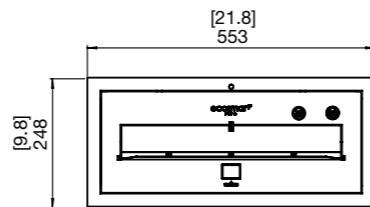
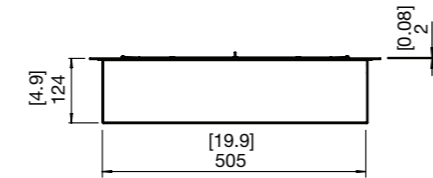
XL500 Specifications

The smallest of EcoSmart's linear bioethanol burners, the XL500 may be compact in size, but this 5L bioethanol burner effectively delivers a beautifully long, lasting flame.

Burner Ventilation and Efficiency*

Dimensions L x W x D mm/in	Fuel Capacity	Heats on Average (Indoors)	Fuel Consumption	Thermal Output Net (MAX)	Approx. Burn Time	Minimum Room Size (per burner)
553 x 248 x 124 21.8 x 9.8 x 4.9	5 L [1.3 Gals]	Over 40 m ² [430.6 ft ²]	0.5 L/h [0.13 Gal/h]	12 MJ/h 11,430 BTU/h 3.35 kW	10 - 13 hours	80m ³ [2,825 ft ³]

Application	Indoor & Outdoor
Burner Colours	 Stainless Steel ESF.B.XL5.WTT Black ESF.B.XL5.WTT.BL
Materials	Grade 304 Stainless Steel Burner, with optional Black Ceramic Coating, Grade 304 Stainless Steel Top Tray with optional Black Hi-temp Powder-coating
Approx. Weight	9.1kg [20lbs]
Fuel Type	e-NRG Bioethanol / e-NRG.com

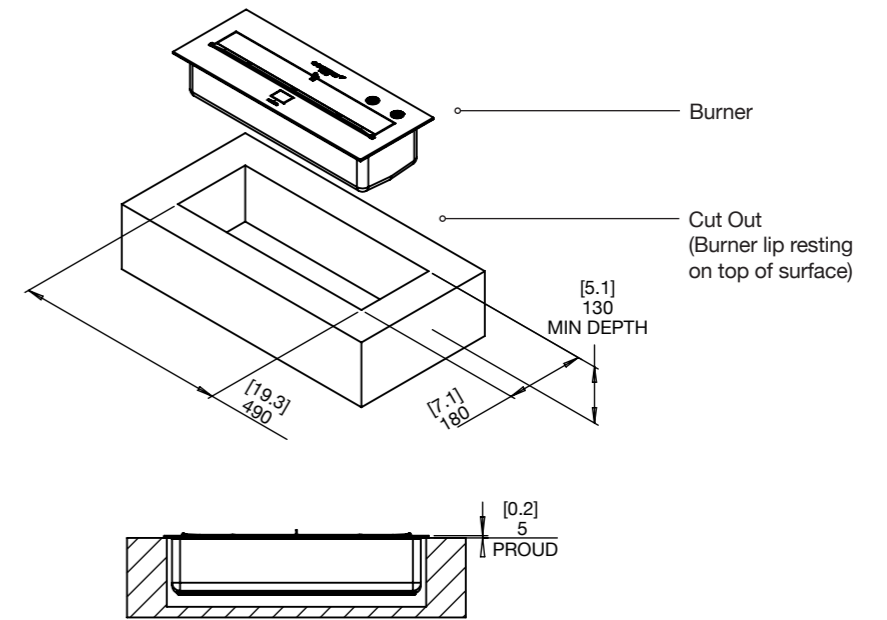


*These values are indicative only and may vary depending on the model purchased, installation, and the seasonal resource used to manufacture e-NRG. Read the manual carefully before operating the burner. Physical model dimensions should be verified against cut out dimensions BEFORE installation begins to confirm tolerances align. All burners are UL Listed in accordance with ANSI/UL1370 in the USA, Certified by BSI in accordance with EN16647, and comply with the ACCC Safety Mandate for Australia (except VB).

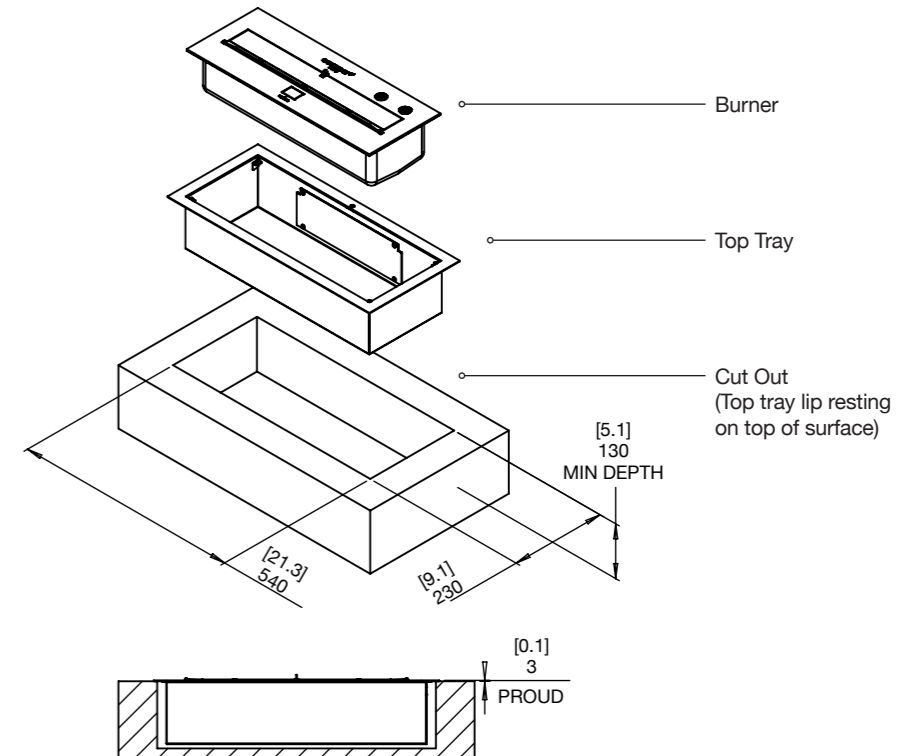
XL500 Cut-out dimensions

Physical model dimensions should be verified against cut out dimensions BEFORE installation begins to confirm tolerances align.

Burner without Top Tray



Burner with Top Tray



Built-in Bioethanol Burners

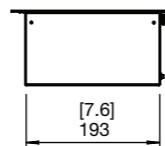
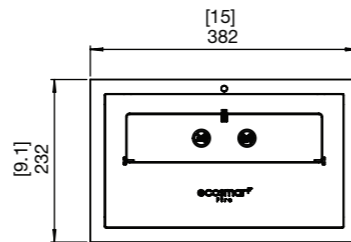
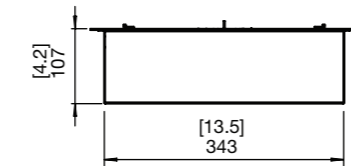
XS340 Specifications

A compact linear burner. Clever design and smaller dimensions enable XS340 to be incorporated into smaller or recessed spaces.

Burner Ventilation and Efficiency*

Dimensions L x W x D mm/in	Fuel Capacity	Heats on Average (Indoors)	Fuel Consumption	Thermal Output Net (MAX)	Approx. Burn Time	Minimum Room Size (per burner)
382 x 232 x 107 15 x 9.1 x 4.2	2.5 L [0.7 Gals]	Over 20 m ² [215 ft ²]	0.45 L/h [0.12 Gal/h]	8.93 MJ/h 8,530 BTU/h 2.5 kW	5 hours	45 m ³ [1,589 ft ³]

Application	Indoor & Outdoor
Burner Colours	 Stainless Steel ESF.B.XS3.WTT Black ESF.B.XS3.WTT.BL
Materials	Grade 304 Stainless Steel Burner, with optional Black Ceramic Coating, Grade 304 Stainless Steel Top Tray with optional Black Hi-Temp Powder-Coating
Approx. Weight	5.4kg [11.9lbs]
Fuel Type	e-NRG Bioethanol / e-NRG.com

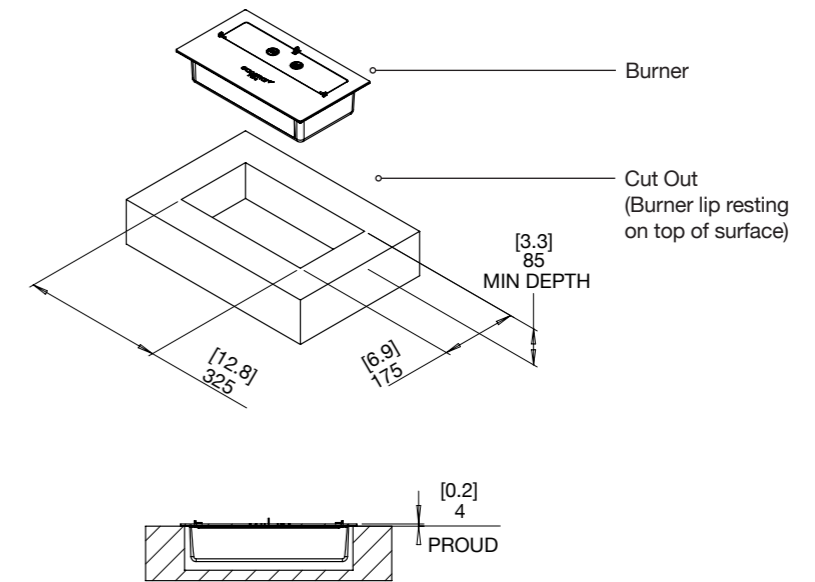


*These values are indicative only and may vary depending on the model purchased, installation, and the seasonal resource used to manufacture e-NRG. Read the manual carefully before operating the burner. Physical model dimensions should be verified against cut out dimensions BEFORE installation begins to confirm tolerances align. All burners are UL Listed in accordance with ANSI/UL1370 in the USA, Certified by BSI in accordance with EN16647, and comply with the ACCC Safety Mandate for Australia (except VB).

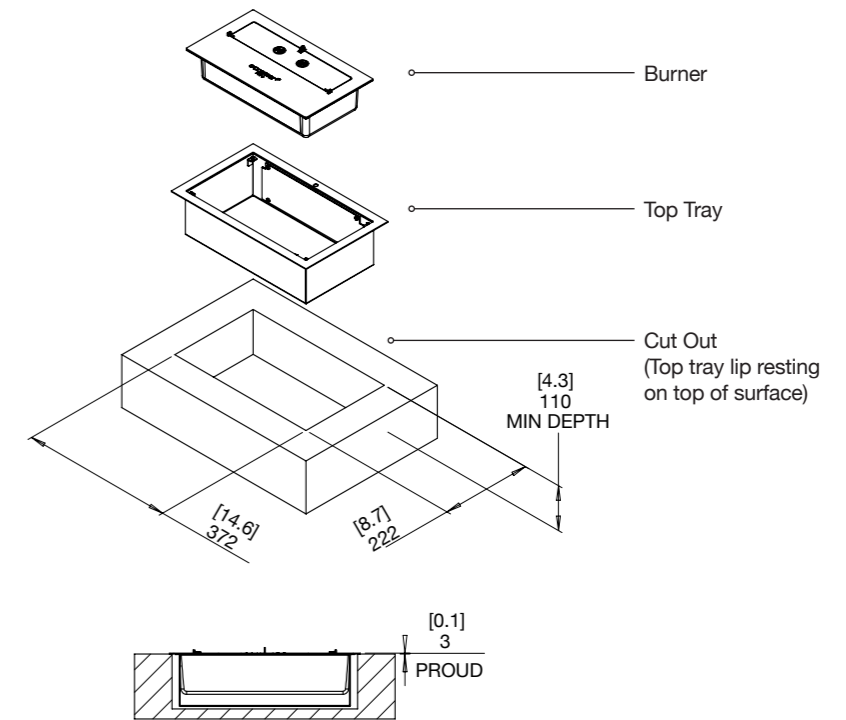
XS340 Cut-out dimensions

Physical model dimensions should be verified against cut out dimensions BEFORE installation begins to confirm tolerances align.

Burner without Top Tray



Burner with Top Tray



BK Burner Inspiration

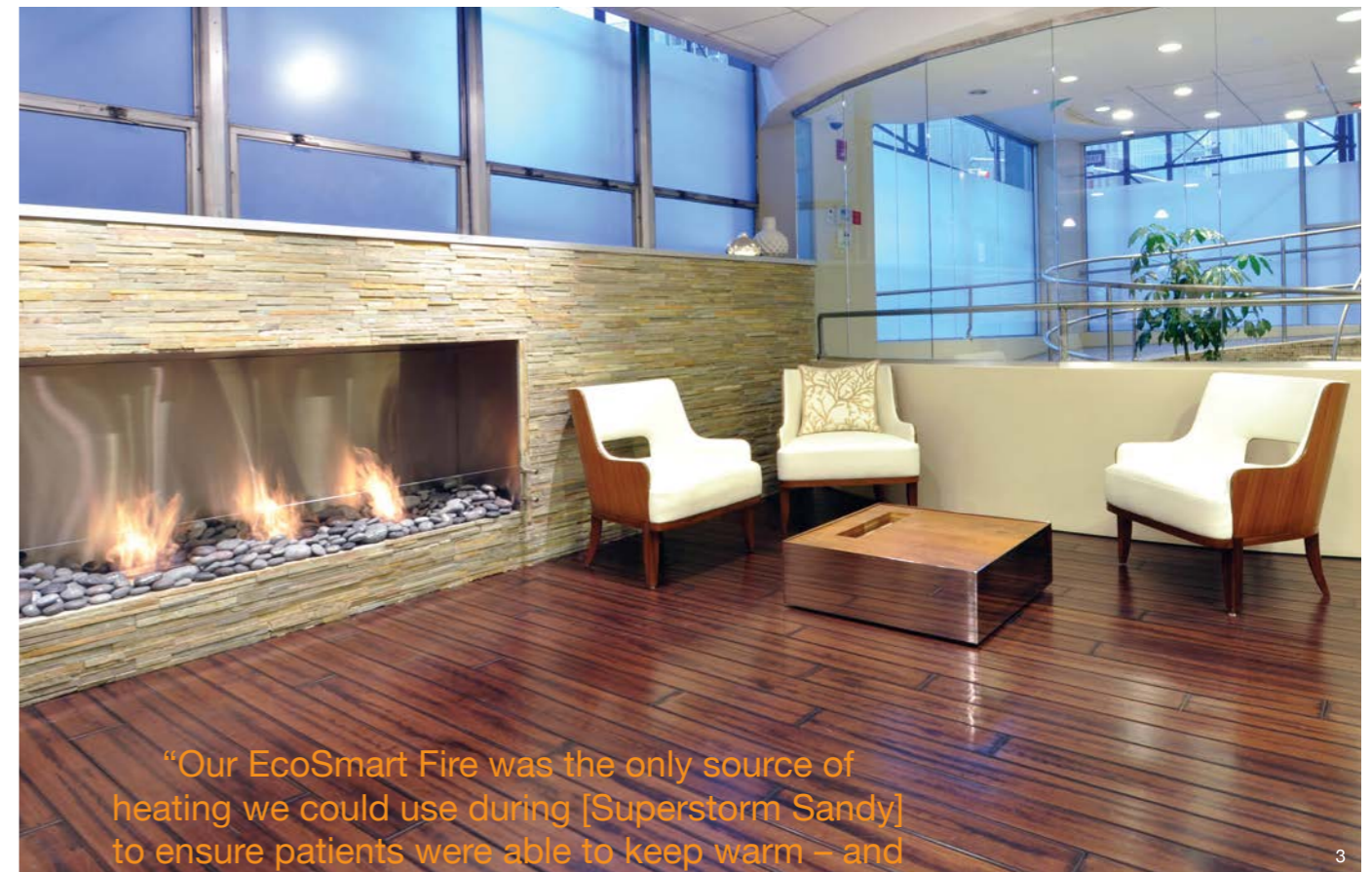
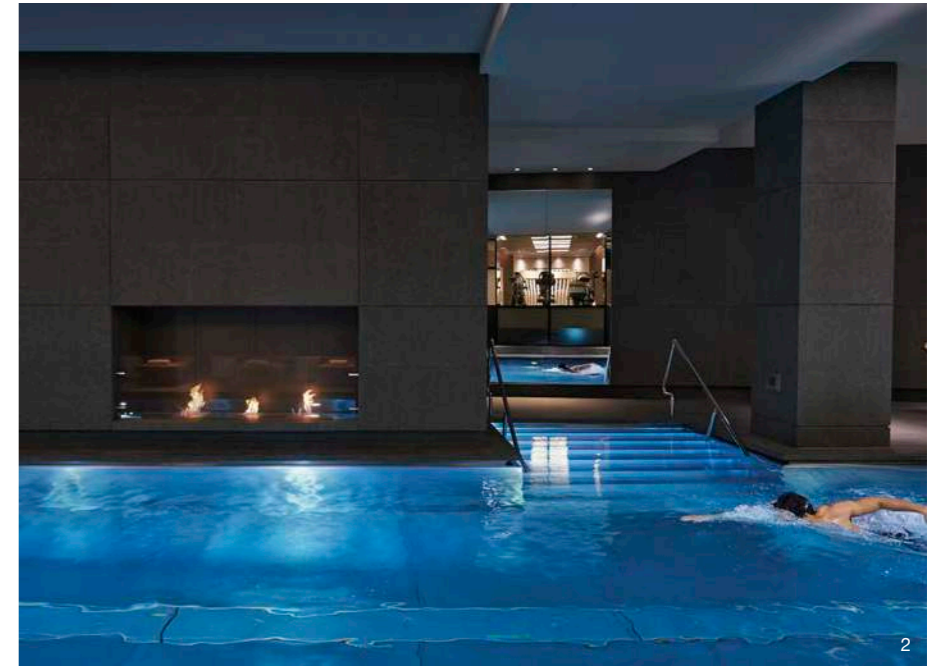


1. The Lake View Toya Nonokaze Resort, Japan
Model: BK5
EcoSmart provides the essential element of fire in this spa resort surrounded by water and overlooking Nakajima Island. Complementing the serene setting is a quiet, clean-burning flame that uses eco-friendly e-NRG.

2. Mandarin Oriental Hyde Park, UK
Model: BK5 x 3
Dive in and enjoy the fitness facilities of this 5-star luxurious hotel. A haven of wellbeing has been created by Denton Corker Marshall and features calming fire elements to help nurture physical and spiritual harmony.

3. Farber Centre, New York USA
Model: 1800DB (discontinued).
Achieve similar look with 3 x BK5's
Creating a sense of warmth and comfort within a state-of-the-art cancer treatment center in New York was a key focus for architect Jeffrey Berman – and the inclusion of an EcoSmart Fire provides the requisite soothing environment.

Case Study available on our website



“Our EcoSmart Fire was the only source of heating we could use during [Superstorm Sandy] to ensure patients were able to keep warm – and the e-NRG bioethanol was delivered to us reliably throughout this emergency.”

DR LEONARD FARBER, FOUNDER

Built-in Bioethanol Burners



1. Pepe Calderin Design, USA

Model: BK5 x 3

For Miami-based architect Pepe Calderin, discovering EcoSmart Fire was a defining moment, both for him and his high-end clients.

2. Allianz Arena, Munich Germany

Model: BK5 x 3

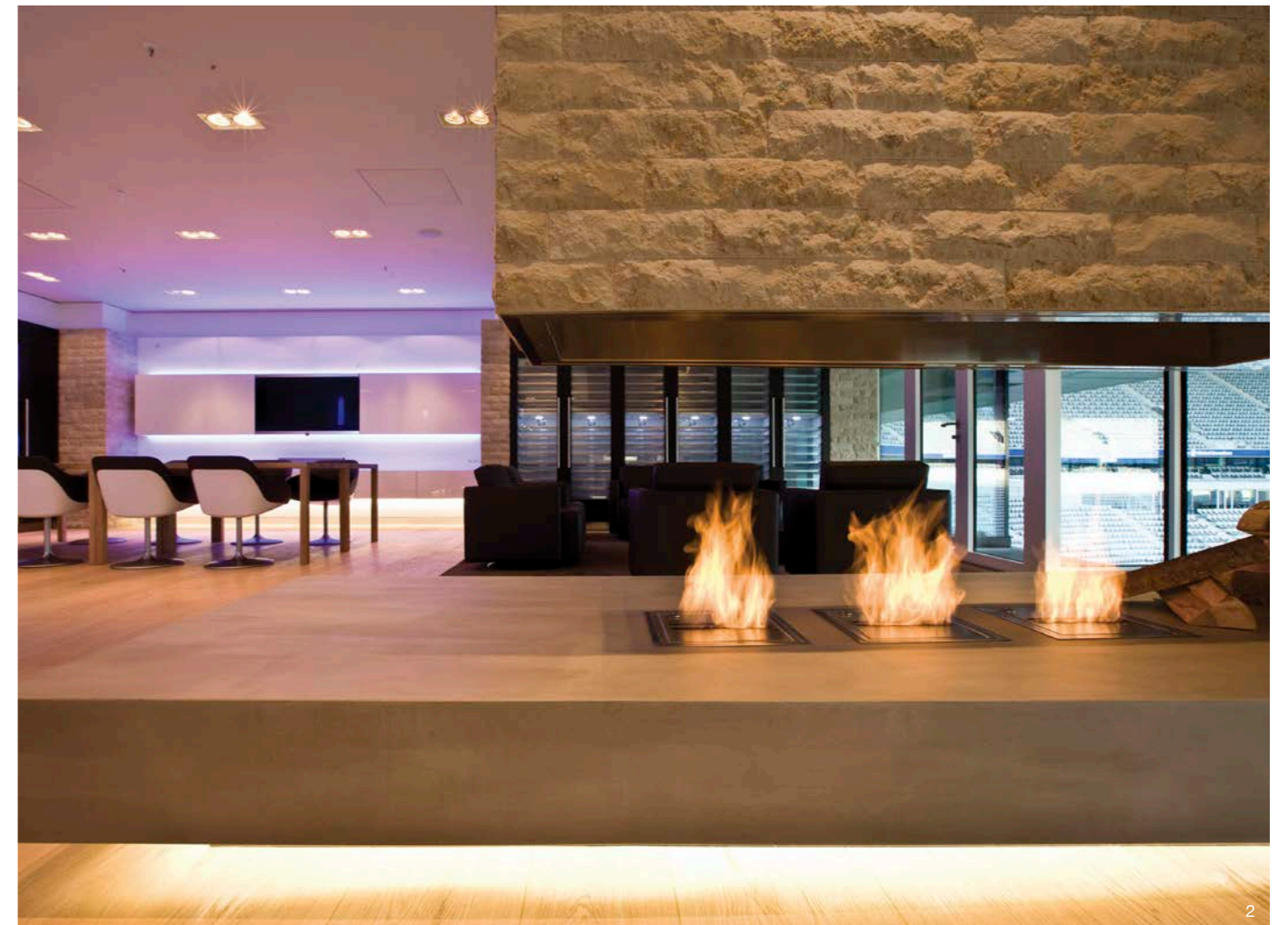
The Allianz Arena in Munich is the location of an amazing Cooking Lounge - and it's not just the clients' appliances and technology that are making a statement.

Case Study available on our website



“The EcoSmart Fire solution has delivered the ambiance of a real open fire without the mess or hassle.”

ANGELIKA LUIBLE-GARBOLDI, BAU+DESIGN



Built-in Bioethanol Burners



1. Wyndham Grand Hotel, London UK
Model: BK5

A five-star all-suite hotel in London is setting a new benchmark in luxury accommodation - with EcoSmart Fire providing distinct focal points.

[Case Study available on our website](#)

2. St James Boutique Hotel, London UK
Model: BK5

Design possibilities are endless when there's no need for a flue or chimney, and the clean burning fuel doesn't emit smoke, soot or ash.

3. Westin Hotel, Sydney Australia
Model: BK5

An award-winning five star Sydney hotel has created an intimate lounge bar complete with an open fireplace that's providing a touch of 'home' for the guests.

[Case Study available on our website](#)

4. May Fair Bar, London UK
Model: BK5 x 3

Breathing new life into an old fireplace at the acclaimed May Fair Bar in London has been easily achieved with a series of BK5 EcoSmart Burners.

[Case Study available on our website](#)

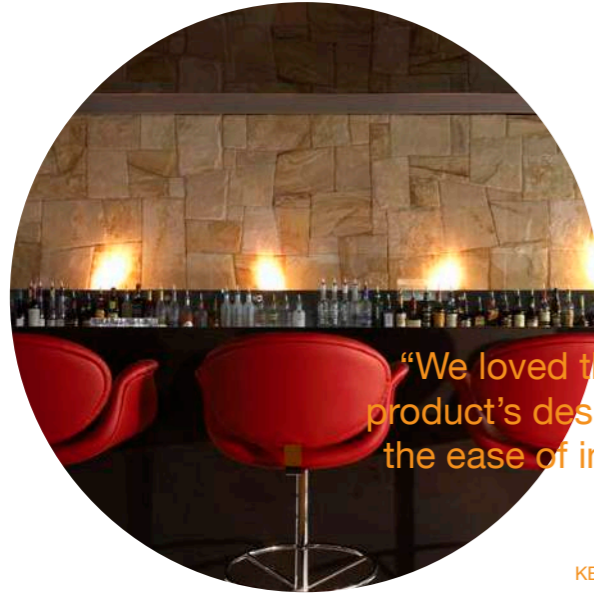


“The fire is safe, reliable,
contemporary and elegant.”

REBECCA NG, JOSEPH PANG DESIGN CONSULTANTS



Built-in Bioethanol Burners



**Hurricane's Grill & Bar,
Sydney Australia**
Models: BK5
Fire and flame theming bursts into life at Hurricane's Grill & Bar, Sydney with a little help from numerous EcoSmart Fire Burners.

[Case Study available on our website](#)

“We loved the simplicity and flexibility of the product’s design, how the ‘system’ worked, and the ease of incorporating it into the fit-out and fixed joinery items.”

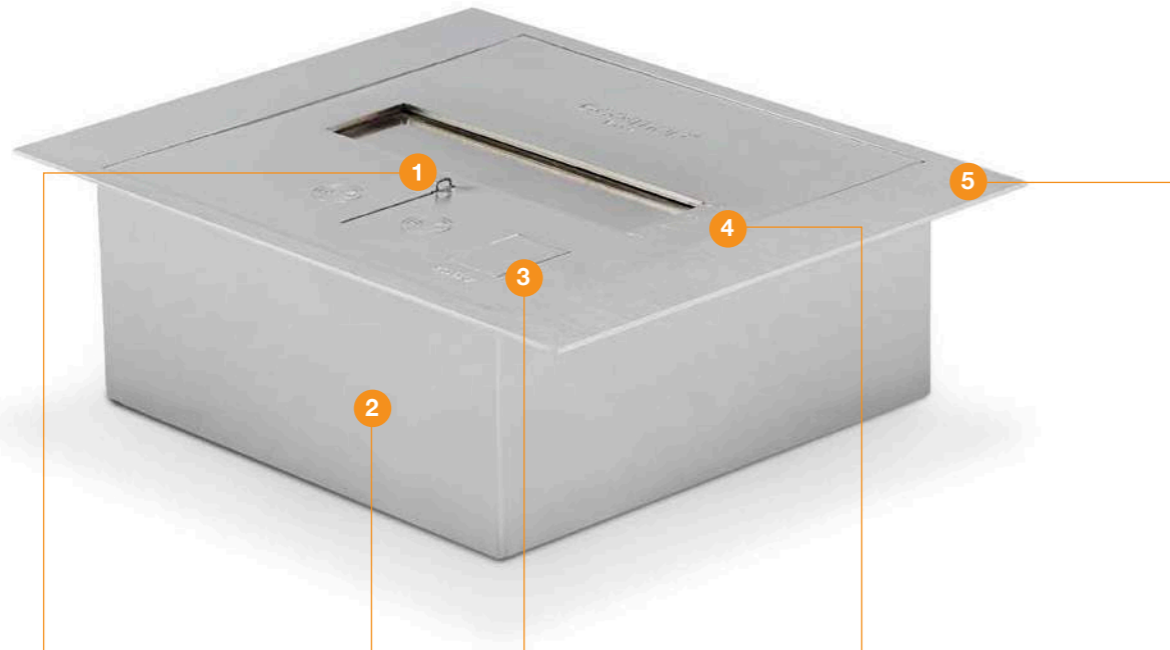
—
KEVIN NG, BRIAN MEYERSON ARCHITECTS



Built-in Bioethanol Burners

BK5 Burner Features & Benefits

EcoSmart's original, award-winning burner. Compact, lightweight and sophisticated, it sets a stylish standard for individual fire designs.



1. Safe Filling

Perfectly aligned slider mechanism, filling point and fuelling system that allows an unobstructed view of the burner tank. This ensures the burner is not filled above the maximum capacity line.

An additional safety measure that prevents the filling point from being accessed while the slider is open. This ensures the flame is fully extinguished before the burner can be refuelled.

2. Top Tray

The Top Tray protects against heat transference and aids in the collection of accidental spillage.

To comply with EN 16647 the Top Tray must be installed before operating the burner.

3. Dedicated Filling Point

A separate filling point and jerry can equipped with a safety spout, allows the burner to be refuelled safely and easily. The spout rests on a plate within the filling point to decrease the risk of over-filling the burner and eliminating the usual splash and spills that would otherwise occur when fuel is decanted into the burner.

4. Flame Regulation

Easy flame control that allows you to regulate the amount of heat being generated, and therefore the amount of fuel consumed. This results in a highly economical and efficient burner.

5. Colour

Available in Stainless Steel.



Included accessories to ensure safe operation



Jerry Can with Safety Spout and e-NRG Bottle Adaptor

Our 5L [1.3Gal] Jerry Can will allow safe storing/decanting of the e-NRG Bioethanol used in the Burner.

The e-NRG adaptor is used to connect the Safety Spout to an e-NRG bottle (N/A in all countries).



Lighter & Lighting Rod

The Lighting Rod is designed to enable you to safely adjust the slider position on the Burner at any time. It is also used for the ignition procedure.



Burner Top Tray

The Top Tray protects against heat transference and aids in the collection of accidental spillage.



Optional Accessory Decorative Black Glass Charcoal

Our Black Glass Charcoal is made from high-quality tempered glass.

Decorative media is not to be placed directly on top of the burner or anywhere they can interfere with the operation of the burner or the stability of flame.



Optional Accessory Plasma Fire Screen

The Plasma is supported by simple stainless steel feet that are clamped to the base of the flat pane of glass, elevating the screen as if floating while providing enhanced stability.



Optional Accessory Twin Feet Fixings

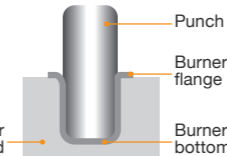
Designed to lock a glass fire screen into position, these stainless steel feet provide permanent stability.

Available in 1 Size

The BK5 holds 5 Litres of environmentally-friendly e-NRG bioethanol fuel, providing a flame that burns for up to 11 hours.

Seamless Construction

All burners are constructed through a "deep-drawn" process, which ensures there are no welding lines or seams through the constructions which could deteriorate over time or come with "pinhole" leaks.



Reliable Operation

BK's minimalist design and ability to withstand extreme heat result in consistent and reliable operation at all temperatures and permitted fuel levels.

No Flue, No Chimney, No Vent

The BK5 is fuelled by bioethanol, so you don't need to flue out any harmful emissions or install costly ventilation systems.

Easy to Clean

Our bioethanol burners can be washed in hot water (or even put in your dishwasher), a key competitive difference.

Global Compliance

All burners are UL Listed in accordance with ANSI/UL1370 in the USA, Certified by BSI in accordance with EN16647, and comply with the ACCC Safety Mandate for Australia.

Built-in Bioethanol Burners

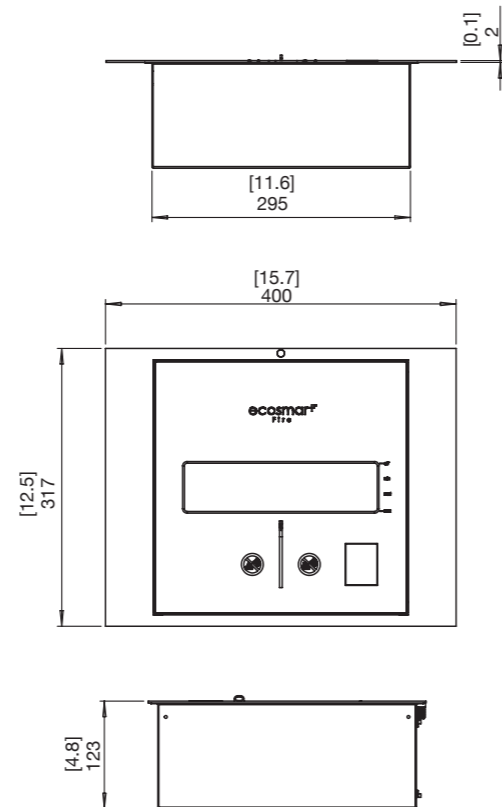
BK5 Specifications

Its popularity among designers, builders, developers and specifiers is testament to the versatility of the BK5.

Burner Ventilation and Efficiency*

Dimensions L x W x D mm/in	Fuel Capacity	Heats on Average (Indoors)	Fuel Consumption	Thermal Output Net (MAX)	Approx. Burn Time	Minimum Room Size (per burner)
400 x 317 x 123 15.7 x 12.5 x 4.8	5 L [1.3 Gals]	Over 35 m ² [376.7 ft ²]	0.64 L/h [0.17 Gal/h] on MAX	14 MJ/h 13,000 BTU/h 3.5 kW	7 - 11 hours	70 m ³ [2,472 ft ³]

Awards	2004 Winner Design Mark Australian International Design Awards Sydney
Application	Indoor & Outdoor
Burner Colour	 Stainless Steel ESF.B.BK5
Materials	Grade 304 Stainless Steel Burner and Top Tray
Approx. Weight	7.6kg [16.6lbs]
Fuel Type	e-NRG Bioethanol / e-NRG.com

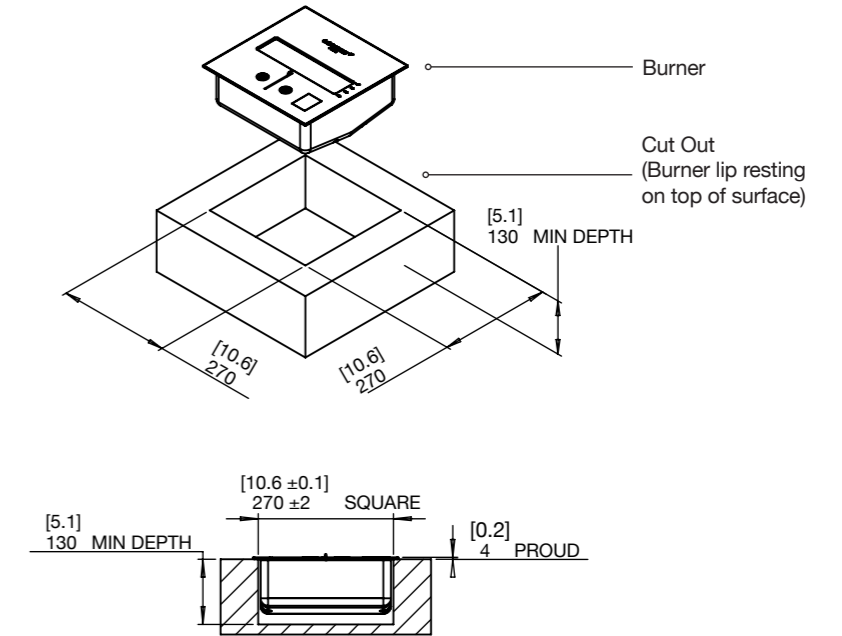


*These values are indicative only and may vary depending on the model purchased, installation, and the seasonal resource used to manufacture e-NRG. Read the manual carefully before operating the burner. Physical model dimensions should be verified against cut out dimensions BEFORE installation begins to confirm tolerances align. All burners are UL Listed in accordance with ANSI/UL1370 in the USA, Certified by BSI in accordance with EN16647, and comply with the ACCC Safety Mandate for Australia (except VB).

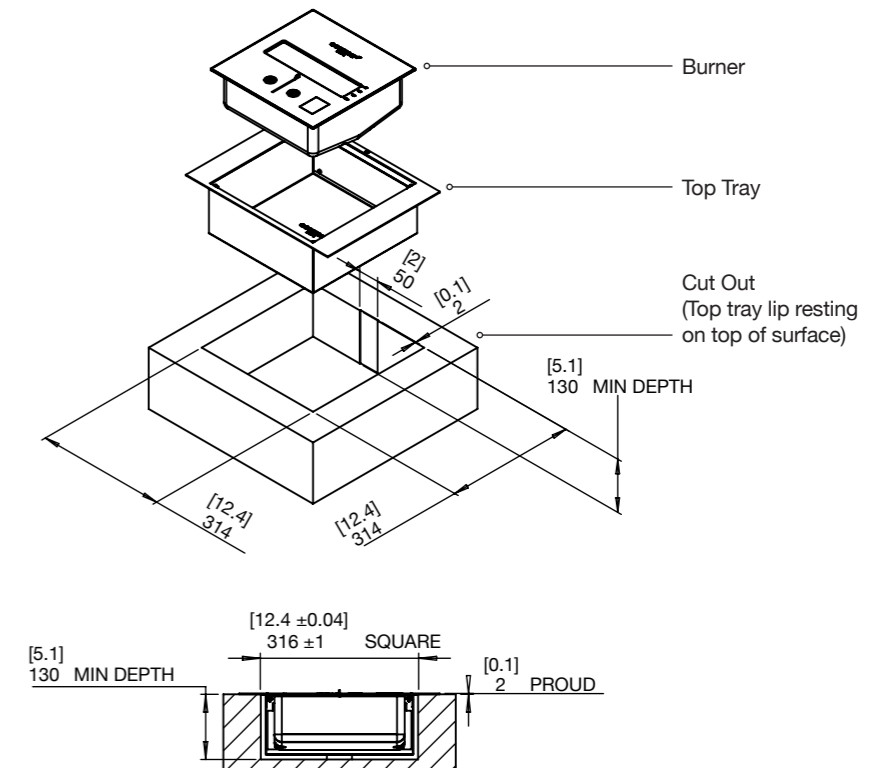
BK5 Cut-out dimensions

Physical model dimensions should be verified against cut out dimensions BEFORE installation begins to confirm tolerances align.

Burner without Top Tray



Burner with Top Tray



Built-in Bioethanol Burners

AB Burner Inspiration



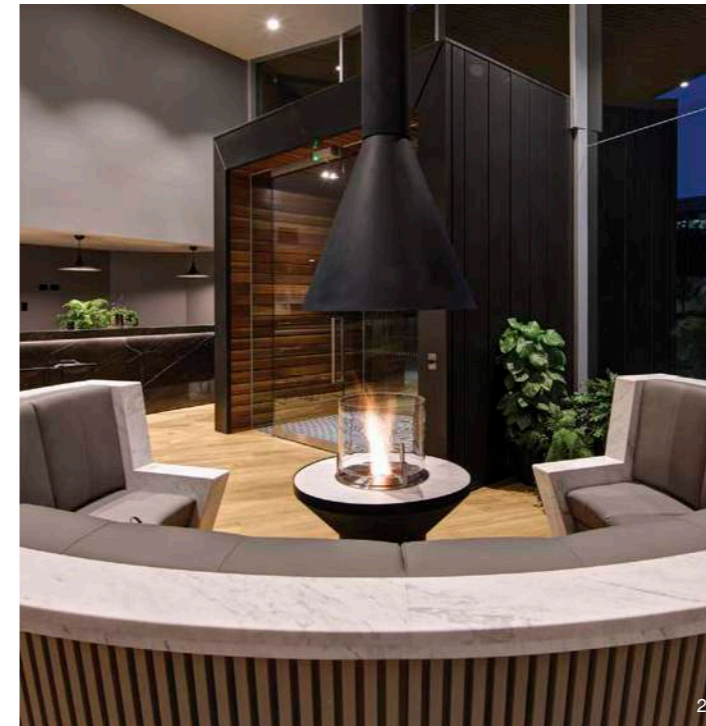
1. Chikusenso Mt Zao Onsen Resort & Spa, Japan
Model: AB8
Situated underneath an impressive bronze bell, is EcoSmart's largest round burner, whose dancing flame contrasts beautifully with the solid structure suspended above.

2. The Garden Oriental Osaka, Japan
Model: AB8

3. TFKB Skylounge, Istanbul Turkey
Model: AB8



Built-in Bioethanol Burners



1. Oswald Down South Home, Australia
Model: AB8
Build a traditional firepit with stone or brick and you've got an instant gathering space.

2 + 3. Hamton's Haven Development, Australia
Models: AB3
Something old, something new - whilst this installation looks quite traditional, the flue is purely there for form not function. After all, there's nothing to flue when you use clean burning e-NRG bioethanol.



Built-in Bioethanol Burners



“The EcoSmart Fire system allowed us to use fire within close proximity to water. The clean, modern shapes created flexibility when designing and allowed us to incorporate the piece within an individual garden feature.”

MICHAEL REED, FABRIC TEN, UK



1. 2015 Melbourne International Flower & Garden Show, Australia Model: AB8

Winner of the 2015 Landscaping Victoria Boutique Award, 'Pipe Dream' by Alison Douglas Design used an EcoSmart outdoor fire feature to create a low maintenance sanctuary for small suburban sites.

2. Fabric Ten, UK Model: AB8

Where water and fire meet: UK design team Fabric Ten showcase a stunning water feature incorporating the EcoSmart AB8 Burner.

[Case Study available on our website](#)

3. 2010 Melbourne International Flower & Garden Show, Australia Model: AB3

Australian TV personality and celebrity gardener Jason Hodges fondly remembers sitting around an open fire as a child. Today Jason loves working with EcoSmart Fire to set the scene for many of his landscape designs.

[Case Study available on our website](#)



Built-in Bioethanol Burners

AB Burner Series Features & Benefits

AB bioethanol burners are the heart of many EcoSmart outdoor fireplaces. With their versatility and modern shape, they provide the ideal tool for individual fire designs.



1. Top Tray
The Top Tray protects against heat transference and aids in the collection of accidental spillage.

To comply with EN 16647 the Top Tray must be installed before operating the burner.

2. Dedicated Filling Point
A designated, in-built filling point to ensure the same procedures can be followed to decrease the likelihood of overfilling.

Consistent and Reliable
Its minimalist design and ability to withstand extreme heat result in consistent and reliable operation at all temperatures and permitted fuel levels.

3. AB8 Efficiency Ring (AB8 Burners Only)
The AB8 Efficiency Ring is placed over the internal burner vents when cold and not operating and serves to increase the efficiency of the burner as well as further stabilise the flame of the burner.

To comply with EN 16647 the AB8 Efficiency Ring must be installed before operating the burner.

4. Colours
Available in Stainless Steel and Black.

Dual Function Lid
A simple lid is used to extinguish the flame and cover the burner opening when it is not in use. This prevents dust particles, leaf litter, rain and debris from falling into the 304 grade stainless steel tank, leaving it clean and safe for use year round.



Included accessories to ensure safe operation



Jerry Can with Safety Spout and e-NRG Bottle Adaptor
Our 5L [1.3Gal] Jerry Can will allow safe storing/decanting of the e-NRG Bioethanol used in the Burner. The e-NRG adaptor is used to connect the Safety Spout to an e-NRG bottle (N/A in all countries).



Lighter & Lighting Rod
The Lighting Rod is designed to enable you to safely adjust the slider position on the Burner at any time. It is also used for the ignition procedure.



AB8 Efficiency Ring (AB8 Burners Only)
Placed over the internal burner vents and serves to increase the efficiency of the burner as well as further stabilise the flame.



Burner Top Tray
The Top Tray protects against heat transference and aids in the collection of accidental spillage.



Jerry Can Spout Extension (AB3 Burners Only)
This is for use with models that have more restricted access to the filling point so that filling can be done in a safe manner.



Optional Accessory Decorative Black Glass Charcoal*

Our Black Glass Charcoal is made from high-quality tempered glass.



Optional Accessory Plasma Fire Screen

The Plasma is supported by simple stainless steel feet that are clamped to the base of the flat pane of glass, elevating the screen as if floating while providing enhanced stability.



Optional Accessory Twin Feet Fixings

Designed to lock a glass fire screen into position, these stainless steel feet provide permanent stability.

Available in 2 sizes

The fuel capacity and heat output are the key differences between the AB8 (8L Burner) and AB3 (2.5L Burner). Both burners have a similar burn time.

Environmentally-friendly

Fuelled by eco-friendly, readily available renewable energy – e-NRG bioethanol.

No Connections

Light up indoor or outdoor spaces with a soft, alluring glow - easily and efficiently, without cumbersome connections.

No Flue, No Chimney, No Vent

There's no need for a chimney to vent harmful gases, as burning liquid e-NRG bioethanol does not produce any smoke. No utility connections required!

Easy to Clean

Our bioethanol burners can be washed in hot water (or even put in your dishwasher), a key competitive difference.

Global Compliance

All burners are UL Listed in accordance with ANSI/UL1370 in the USA, Certified by BSI in accordance with EN16647, and comply with the ACCC Safety Mandate for Australia.

**Decorative media is not to be placed directly on top of the burner or anywhere they can interfere with the operation of the burner or the stability of flame.*

Built-in Bioethanol Burners



AB8 Specifications

Its compact design enables the round-shaped AB8 to be easily integrated into outdoor and indoor fire designs.

Burner Ventilation and Efficiency*

Dimensions L x W x D mm/in	Fuel Capacity	Heats on Average (Indoors)	Fuel Consumption	Thermal Output Net (MAX)	Approx. Burn Time	Minimum Room Size (per burner)
402 x 402 x 159 15.8 x 15.8 x 6.3	8 L [2.1 Gals]	Over 60 m ² [645 ft ²]	1.1 L/h [0.29 Gal/h]	21.56 MJ/h 20,433 BTU/h 5.99 kW	7 - 9 hours	116 m ³ [4,096 ft ³]
		With AB8 Efficiency Ring** (EN Compliant)				
		Over 30 m ² [322.9 ft ²]	0.7 L/h [0.18 Gal/h]	13.9 MJ/h 12,860 BTU/h 3.77 kW	9 - 11 hours	

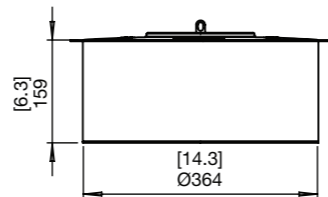
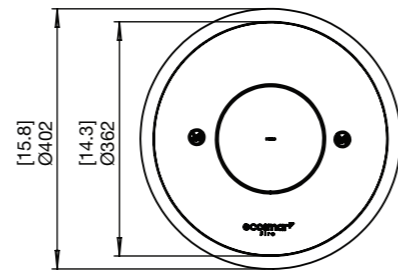
Application Indoor & Outdoor

Burner Colour  Stainless Steel ESF.B.AB8.WTT  Black ESF.B.AB8.WTT.BL

Materials Grade 304 Stainless Steel Burner, with optional Black Ceramic Coating, Grade 304 Stainless Steel Top Tray with optional Black Hi-Temp Powder-Coating

Approx. Weight 8.2kg [18.1lbs]

Fuel Type e-NRG Bioethanol / e-NRG.com



*These values are indicative only and may vary depending on the model purchased, installation, and the seasonal resource used to manufacture e-NRG.

**To comply with EN 16647 the AB8 Efficiency Ring and Top Tray must be installed before operating the burner.

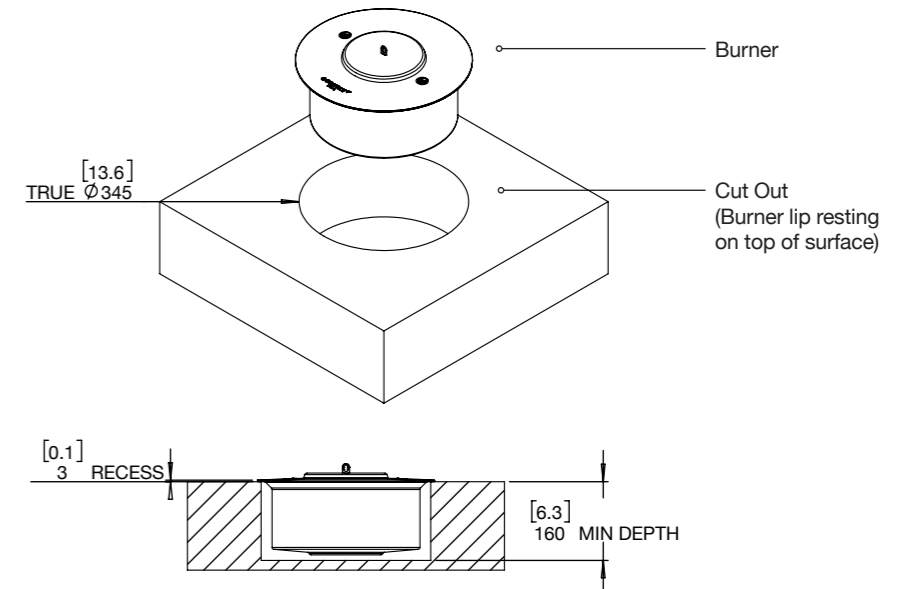
Read the manual carefully before operating the burner. Physical model dimensions should be verified against cut out dimensions BEFORE installation begins to confirm tolerances align.

All burners are UL Listed in accordance with ANSI/UL1370 in the USA, Certified by BSI in accordance with EN16647, and comply with the ACCC Safety Mandate for Australia (except VB).

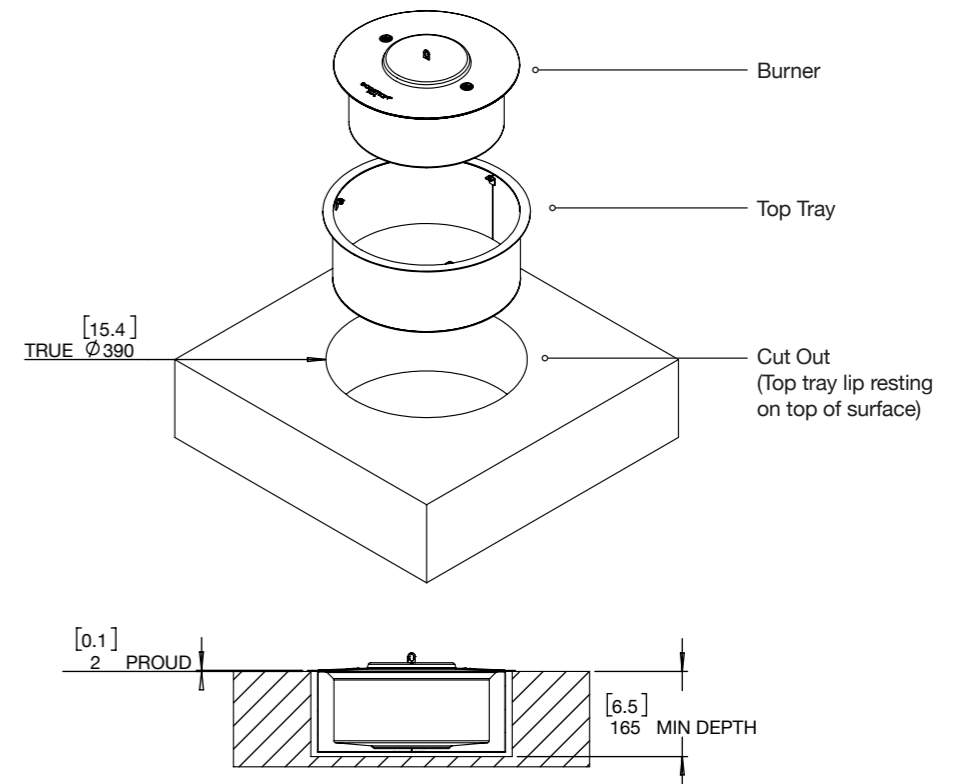
AB8 Cut-out dimensions

Physical model dimensions should be verified against cut out dimensions BEFORE installation begins to confirm tolerances align.

Burner without Top Tray



Burner with Top Tray



Built-in Bioethanol Burners

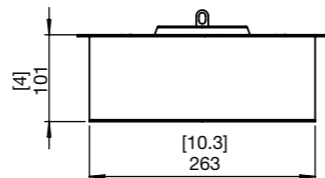
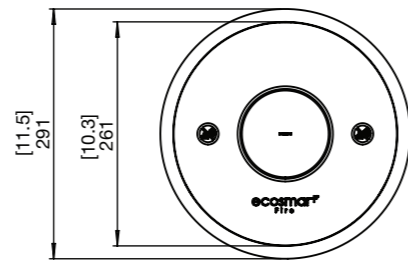
AB3 Specifications

It's at the heart of many freestanding, portable designer indoor and outdoor fires, and provides the versatility to create your own.

Burner Ventilation and Efficiency*

Dimensions L x W x D mm/in	Fuel Capacity	Heats on Average (Indoors)	Fuel Consumption	Thermal Output Net (MAX)	Approx. Burn Time	Minimum Room Size (per burner)
291 x 291 x 101 11.5 x 11.5 x 4	2.5 L [0.7 Gals]	Over 20 m ² [215 ft ²]	0.31 L/h [0.1 Gal/h]	6.14 MJ/h 5,800 BTU/h 1.7 kW	8 - 11 hours	40 m ³ [1,413 ft ³]

Application	Indoor & Outdoor
Burner Colour	 Stainless Steel ESF.B.AB3.WTT Black ESF.B.AB3.WTT.BL
Materials	Grade 304 Stainless Steel Burner, with optional Black Ceramic Coating, Grade 304 Stainless Steel Top Tray with optional Black Hi-Temp Powder-Coating
Approx. Weight	3.7kg [8.1lbs]
Fuel Type	e-NRG Bioethanol / e-NRG.com

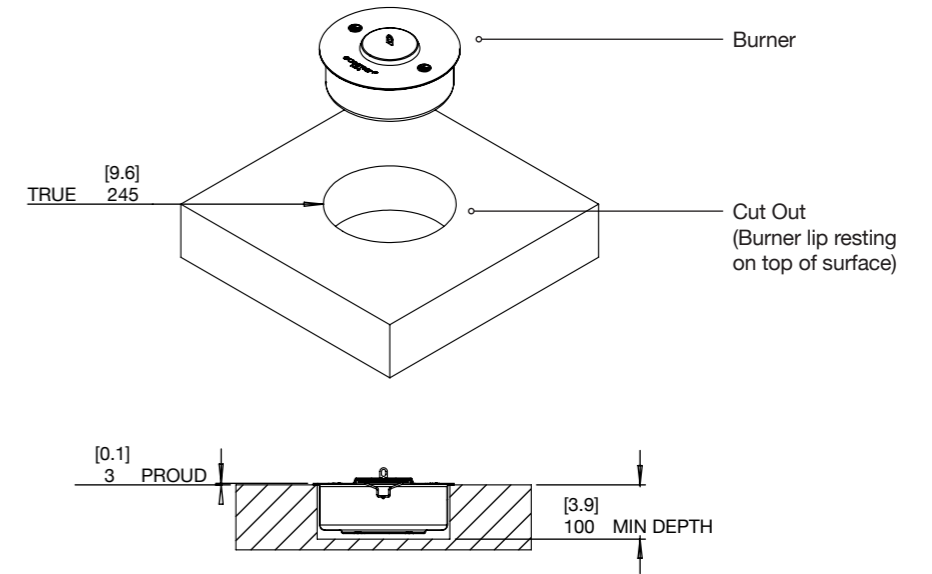


*These values are indicative only and may vary depending on the model purchased, installation, and the seasonal resource used to manufacture e-NRG. Read the manual carefully before operating the burner. Physical model dimensions should be verified against cut out dimensions BEFORE installation begins to confirm tolerances align. All burners are UL Listed in accordance with ANSI/UL1370 in the USA, Certified by BSI in accordance with EN16647, and comply with the ACCC Safety Mandate for Australia (except VB).

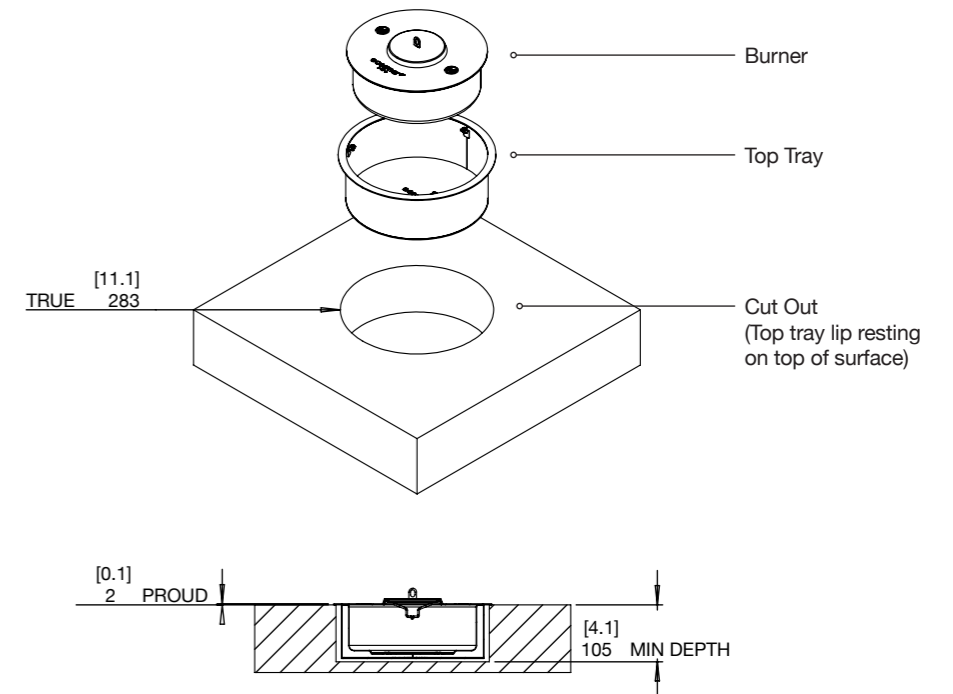
AB3 Cut-out dimensions

Physical model dimensions should be verified against cut out dimensions BEFORE installation begins to confirm tolerances align.

Burner without Top Tray



Burner with Top Tray



VB Burner Inspiration



**1. Commercial Showroom, Australia
Model: VB2**

Regardless of whether it's an Edwardian, Federation, Art Deco or Art Nouveau fireplace, EcoSmart's VB2 Burner will seamlessly slot in – instantly transforming an environmentally polluting wood-burning design into an eco-friendly fire solution.

**2. Private Residence, Australia
Model: VB2**

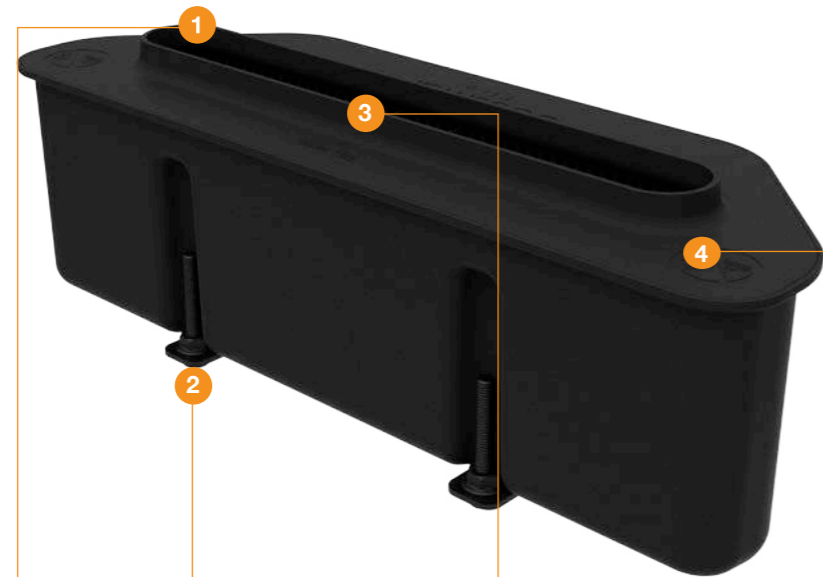
**3. Private Residence, Australia
Model: VB2**
A perfect example of 'old' and 'new'. A traditional fireplace has been given new life with a clean-burning, eco-friendly EcoSmart Burner.



Built-in Bioethanol Burners

VB2 Burner Features & Benefits

The VB2 Burner has been carefully and cleverly designed to convert traditional fireplaces into clean-burning bioethanol fireplaces - in just minutes!



1. Accessory Exclusion Zone
Elevated lip around the burner mouth that stops accessories from sitting over the flame or blocking the shut off procedure. This raised lip includes air holes that allows air to flow smoothly around the fuel to achieve a better flame within the setting.

2. Height Adjustable
Adjustable feet level and lift the burner to the best setting depending on the depth of the grill it's being placed within.

Fuel Efficiency
The VB2 burner has several layers of internal features that increases its efficiency including vertical baffles, aspiration vents and dense padding - all of which is built to last a lifetime.

3. Dedicated Filling Point
A designated, inbuilt filling point to ensure the same procedures can be followed to decrease the likelihood of overfilling.

Dual Purpose Lid
A simple lid is used to extinguish the flame and cover the burner opening when it is not in use. This prevents dust from falling into the tank, leaving it clean and safe for use year round.

4. Colour
Available in Black.
VB2 is finished in Black Ceramic Coating, designed to blend with existing fireplaces.



Included accessories to ensure safe operation



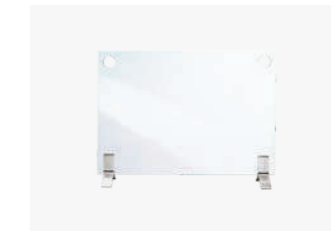
Jerry Can with Safety Spout and e-NRG Bottle Adaptor
Our 5L [1.3Gal] Jerry Can will allow safe storing/decanting of the e-NRG Bioethanol used in the Burner.
The e-NRG adaptor is used to connect the Safety Spout to an e-NRG bottle (N/A in all countries).



Lighter & Lighting Rod
The Lighting Rod is designed to enable you to safely adjust the slider position on the Burner at any time. It is also used for the ignition procedure.



Optional Accessory Decorative Black Glass Charcoal
Our Black Glass Charcoal is made from high-quality tempered glass.
Decorative media is not to be placed directly on top of the burner or anywhere they can interfere with the operation of the burner or the stability of flame.



Optional Accessory Plasma Fire Screen
The Plasma is supported by simple stainless steel feet that are clamped to the base of the flat pane of glass, elevating the screen as if floating while providing enhanced stability.

Available in 1 Size
The VB2 holds 2 Litres of environmentally-friendly e-NRG bioethanol fuel, providing a flame that burns for up to 6 hours.

Easy Installation
The VB2 burner has several layers of internal features that increases its efficiency including vertical baffles, aspiration vents and dense padding - all of which is built to last a lifetime.

Clean Burning
Warm your home, not the planet. Powered by e-NRG bioethanol, a sustainable plant-based fuel, VB2 produces no smoke, no soot, and no mess.

No Flue, No Chimney, No Vent
No vent or flue required, which stops heat from escaping. Increase heat output by closing the dampener or sealing off the flue with a metal plate.

Built-in Bioethanol Burners

VB2 Specifications

Specially created for easy integration into existing fireplaces. A simple and effective way to create a new, modern fireplace.

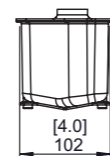
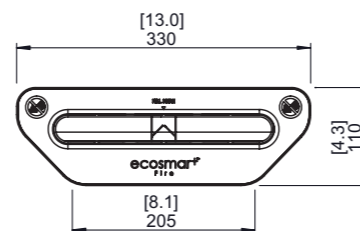
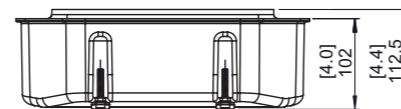


Burner Ventilation and Efficiency*

Dimensions L x W x D mm/in	Fuel Capacity	Heats on Average (Indoors)	Fuel Consumption	Thermal Output Net (MAX)	Approx. Burn Time	Minimum Room Size (per burner)
330 x 110 x 112.5 13 x 4.3 x 4.4	2 L [0.5 Gals]	Over 15 m ² [161 ft ²]	0.5 L/h [0.13 Gal/h]	7.24 MJ/h 6,180 BTU/h 2.5 kW	6 hours	45 m ³ [1,589 ft ³]

Application	Indoor
Burner Colours	 Black ESF.B.VB2
Materials	Grade 304 Stainless Steel Burner, with Black Ceramic Coating
Approx. Weight	1.8kg [4lbs]
Fuel Type	e-NRG Bioethanol / e-NRG.com

Not available in all countries.



*These values are indicative only and may vary depending on the model purchased, installation, and the seasonal resource used to manufacture e-NRG. Read the manual carefully before operating the burner. A size template is available to test the burner fits the setting.

Commercial Showroom, Australia



Around the World

EcoSmart Fire is represented by an extensive network of distributors, resellers and agents around the world. If you can't find who you are looking for, or someone close to you, visit ecosmartfire.com

EcoSmart Fire is designed and manufactured by MAD Design Group.

Interested in representing or retailing EcoSmart Fire in your country? Contact your local distributor or our Head Office today.

Reproduction of this catalogue in any manner, in any language, in whole or in part without prior written permission is prohibited. MAD Design Group reserves the right to correct any errors or misprints. All product specifications and data are subject to change without notice and believed to be correct at the time of publication. MAD Design Group, its affiliates, agents, and employees, and all persons acting on its or their behalf (collectively, "MAD Design Group"), disclaim any and all liability for any errors, inaccuracies or incompleteness contained herein or in any other disclosure relating to any product. MAD Design Group disclaims any and all liability arising out of the use or application of any product described herein or of any information provided herein to the maximum extent permitted by law. The product specifications do not expand or otherwise modify MAD Design Group's terms and conditions of purchase, including but not limited to the warranty expressed therein, which apply to these products. No license, express or implied, by estoppel or otherwise, to any intellectual property rights is granted by this document or by any conduct of MAD Design Group. Customers using or selling MAD Design Group products not expressly indicated for use in such applications do so entirely at their own risk and agree to fully indemnify MAD Design Group for any damages arising or resulting from such use or sale. Please contact authorised personnel from MAD Design Group to obtain written terms and conditions regarding products designed for such applications. International Patent Pending – Trademarks Pending – All Designs Registered. V0421
