



# DIY PAVESI OVEN QUATTRO KIT | CONTENTS

SERIES: RESIDENTIAL DIY OVEN SERIES

## DETAILED SPECS

WEIGHT:  
1300 LBS

We make every effort to provide accurate information regarding dimension information. Please note that due to the artisan nature of the manufacturing process, from time to time, product sizing and ship weight may vary slightly.

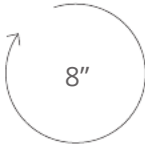
## CLEARANCES

Minimum clearance of the oven (built-in or standalone) to combustible materials are as follows:

Top: 14" (356 mm)  
Back & Sides: 1" (25 mm)

- Non-combustible flooring must extend out at least 36" (914 mm) from oven opening and at least 30" (762 mm) to each side of the opening.
- Do not fill required air space with insulation or other materials.

## VENTILATION

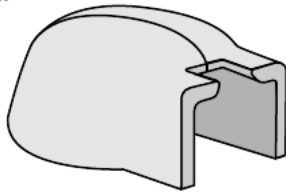


FLUE COLLAR  
CONNECTION  
DIAMETER  
(INTERNAL)

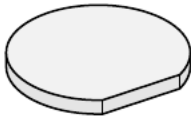
**Ventilation material is not included.**  
The oven shall be direct connected to a UL 103 HT listed chimney or equivalent standard per NFPA 211 & local codes. The chimney must terminate to a chimney cap with a UL listed spark arrester. Installation requirements may vary dependent upon the desired chimney run.

Operational airflow: 200 CFM  
Static Pressure at Flue Collar: 0.05 in H<sub>2</sub>O

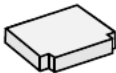
A.



B.



C.



D.



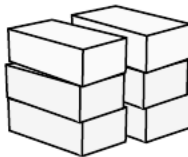
E.



F.



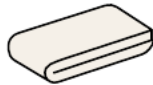
G.



H.



I.



J.



## CONTENTS CHECK LIST

- |  |   |
|--|---|
| <input type="checkbox"/> Refractory Dome Pieces (A)  | <input type="checkbox"/> Refractory Monoblock Floor (B) |
| <input type="checkbox"/> Refractory Landing (C)      | <input type="checkbox"/> Refractory Mortar (D)          |
| <input type="checkbox"/> Oven Manifold (E)           | <input type="checkbox"/> Chimney Start (F)              |
| <input type="checkbox"/> Floor Insulation Blocks (G) | <input type="checkbox"/> Dome Insulation Blankets (H)   |
| <input type="checkbox"/> Insulation Fiber (I)        | <input type="checkbox"/> Oven Door (J)                  |