

VP Pellet Pipe and Accessories

The safe, efficient, and cost-effective venting system that's engineered precisely for pellet stoves

Pipe Diameter 3" or 4" I.D.
Pipe Lengths 6", 12", 24", 36" & 60"



Adjustable Pipe Length
(VP-EZAJ)



Tees and Double Tee with Tee Cap



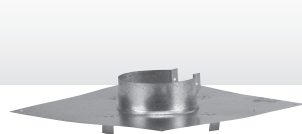
90 Degree Adjustable Elbow
(VP-90EL)



45 Degree Adjustable Elbow
(VP-45 EL)



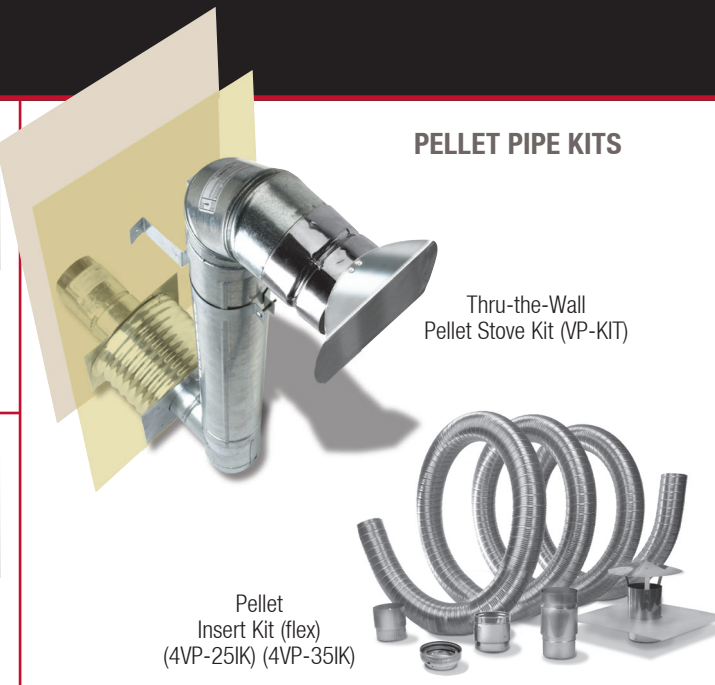
Ceiling Support/Firestop
(VP-CS)



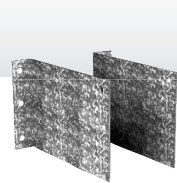
Wall Band/Support
(VP-WB)



PELLET PIPE KITS



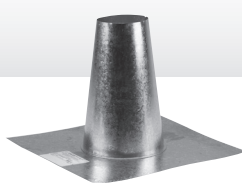
Tee Support
(3/4VP-WS)



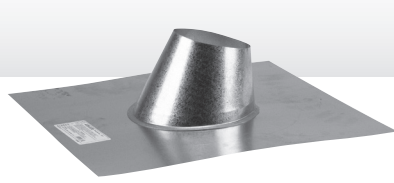
Cathedral Ceiling Support
(VP-CCS)



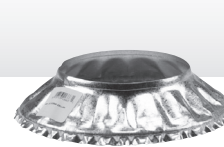
Tall Cone Flashing
(VP-TF)



Adjustable Flashing
(VP-AF)



Storm Collar
(VP-SC)



Horizontal Termination
(VP-HC)



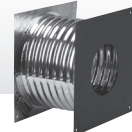
Vertical Termination
(VP-VC)



Exit Cap
(VP-EC)



Wall Thimble
(VP-WT)



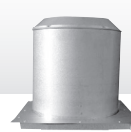
Trim Plate
(VP-TP)



Exterior Shield
(VP-ES)



Attic Insulation Shield
(VP-AIS)



3" to 4" In increaser
(3VP-I4)



Pipe Connector
(VP-PC)



Thick Collar Pipe Connector
(VP-TPC)



Multi-Fit Connector
(3VP-MFC)



Adjustable Pipe Connector
(VP-APC)



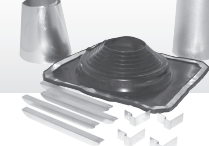
Chimney Adapter
(VP-A6)



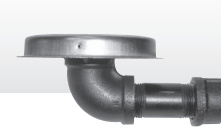
Shielding Insulation
(SUS)



Rubber Boot Flashing Kit
(URBAK)



Vacuum Cleanout Cap
(VP-VCC)



CHECKLIST FOR VP PELLET PIPE SYSTEM

ITEM	SKU	QUANTITY	PRICE
PIPE DIAMETER (choose one): <input type="checkbox"/> 3" <input type="checkbox"/> 4" (B) = Optional painted black			
VP PELLET PIPE			
6" LENGTH (VP-6)	24X006	_____	_____
12" LENGTH (VP-12)	24X012	_____	_____
24" LENGTH (VP-24)	24X024	_____	_____
36" LENGTH (VP-36)	24X036(B)	_____	_____
60" LENGTH (VP-60)	24X060(B)	_____	_____
EZ ADJUSTABLE PIPE (VP-EZAJ12)	24X086(B)	_____	_____
TEE w/ TEE CAP (VP-TS)	24X100(B)	_____	_____
ADAPTER TEE w/ TEE CAP (4VP-3AT)	244133B	_____	_____
DOUBLE TEE w/ CAP (VP-TD)	24X10X	_____	_____
INCREASER TEE (4VP-3T)	244113(B)	_____	_____
90° ELBOW (VP-90EL)	24X230(B)	_____	_____
45° ELBOW (VP-45EL)	24X215(B)	_____	_____
CEILING SUPPORT/FIRESTOP (VP-CS)	24X410	_____	_____
WALL BRACKET/SUPPORT (VP-WB)	24X520	_____	_____
3"/4" TEE SUPPORT (3/4VP-WS)	243430	_____	_____
CATHEDRAL CEILING SUPPORT (VP-CCS)	24X424	_____	_____
TALL CONE FLASHING (VP-TF)	24X815	_____	_____
ADJUSTABLE FLASHING (VP-AF)	24X825	_____	_____
0/12 TO 6/12			
STORM COLLAR (VP-SC)	24X810	_____	_____
HORIZONTAL TERMINATION (VP-HC)	24X805	_____	_____
VERTICAL TERMINATION (VP-VC)	24X800	_____	_____
EXIT CAP (VP-EC)	24X803	_____	_____
OUTLET SCREEN (4VP-VP0S)	1604790	_____	_____
WALL THIMBLE (VP-WT)	24X460	_____	_____
THICK WALL THIMBLE (VP-WTT)	24X461	_____	_____
TRIM PLATE - BLACK (VP-TP)	24X502	_____	_____
EXTERIOR SHIELD - UNPAINTED (VP-ES)	24X500	_____	_____
ATTIC INSULATION SHIELD (VP-AIS)	24X490	_____	_____
3" TO 4" INCREASER (VP-I4)	243304	_____	_____
PIPE CONNECTOR (VP-PC)	24X240	_____	_____
PIPE CONNECTOR - BLACK (VP-PC)	243240B	_____	_____
THICK COLLAR PIPE CONNECTOR (VP-TPC)	24X242	_____	_____
MULTI-FIT CONNECTOR (VP-MFC)	243241	_____	_____
ADJUSTABLE PIPE CONNECTOR (VP-APC)	24X243	_____	_____
6" CHIMNEY ADAPTER (VP-A6)	24X246	_____	_____
8" CHIMNEY ADAPTER (VP-A8)	24X248	_____	_____
SHIELDING INSULATION (SUS)	200001	_____	_____
RUBBER BOOT FLASHING KIT (URBAK)	200275	_____	_____
VACUUM CLEANOUT CAP (VP-VCC)	24X185	_____	_____
		TOTAL	_____

PELLET PIPE KITS

ITEM	SKU	QUANTITY	PRICE
4"-25' PELLET PIPE INSERT KIT (4VP-25IK) Includes: 25' of 4" diameter stainless flex, 4" flex termination, 4" flex flashing adapter, 4" flex flashing, 3VP-I4, 3VP-PC, silicone sealant	284855	_____	_____
4"-35' PELLET PIPE INSERT KIT (4VP-35IK) Includes: 35' of 4" diameter stainless flex, 4" flex termination, 4" flex flashing adapter, 4" flex flashing, 3VP-I4, 3VP-PC, silicone sealant	284865	_____	_____
3" THRU-THE-WALL PELLET STOVE KIT (3VP-KIT) Includes: 3VP-HC, 3VP-90EL, 3VP-WB, (5) 3VP-12, 3VP-TS, 3VP-WT, 3VP-PC	283870	_____	_____
3"/4" THRU-THE-WALL PELLET STOVE KIT (3/4VP-KIT) Includes: 4VP-HC, 4VP-90EL, 4VP-WB, (5) 4VP-12, 4VP-TS, 4VP-WT, 3/4VP-WS, 3VP-I4, 4VP-PC, 3VP-PC	284875	_____	_____

VP Pellet Pipe™ for Burning Pellets

The VP Pellet Pipe, diameter sizes 3" and 4", may be used for stoves or appliances burning pellets. For stoves burning corn or bio-fuels we recommend our DT-M product. The DT-M is a direct vent system with a stainless steel outer vent and an AL29-4C® welded inner vent to withstand the highly corrosive exhaust gases from burning corn and other bio-fuels.

A System for Every Installation

The VP Pellet Pipe includes a variety of components to meet every installation requirement. These components may be combined in a wide variety of ways to solve almost any pellet installation problem. For additional information on part selection, refer to the guide pages and diagrams located in the VP Pellet Pipe catalog.

Complete Catalog and Instructions

The VP Pellet Pipe product line is supported with a complete product catalog with available kits and diagrams. Additionally, we have complete installation instructions detailing how to install your VP Pellet Pipe. All of these publications are available on the web at www.selkirkcorp.com.

VP Pellet Pipe

Engineered specifically for today's pellet stoves.

The best venting system for your pellet stove.

Selkirk gives you the safe, efficient, and cost-effective venting system that's engineered precisely for pellet burning stoves. Our VP Pellet Pipe™ has been tested and listed by Underwriters' Laboratories, Inc., in accordance with UL®-641 Standard for Low Temperature Venting Systems, as well as the applicable requirements from UL®-103 Standard for Residential Type and Building Heating Appliance Chimneys. VP Pellet Pipe, when installed according to Selkirk's installation instructions, complies with National Safety Standards, such as NFPA -211. The system is rated for flue temperatures up to 570°F.

VP Pellet Pipe Features:

- Available in 3" and 4" diameters
- 1" clearance to combustibles
- Removable tee cap for inspection and cleaning
- Full line of fittings and full range of pipe lengths increase installation flexibility
- Painted pipe lengths available for interior use
- "Smart Choice" Lifetime Warranty



PELLETOPIPE™

- Rolled-over male end eliminates sharp edges
- Internal spacing bead assures uniform insulating airspace between pipe walls
- Inner wall 304 stainless steel, outer wall paintable galvanized (also available in pre-painted black)
- 1/4" airspace between pipe walls
- Internal spacing bead assures uniform insulating airspace between pipe walls
- Gasketed joint design
- Proven coupling joint connects in seconds to assure joint integrity

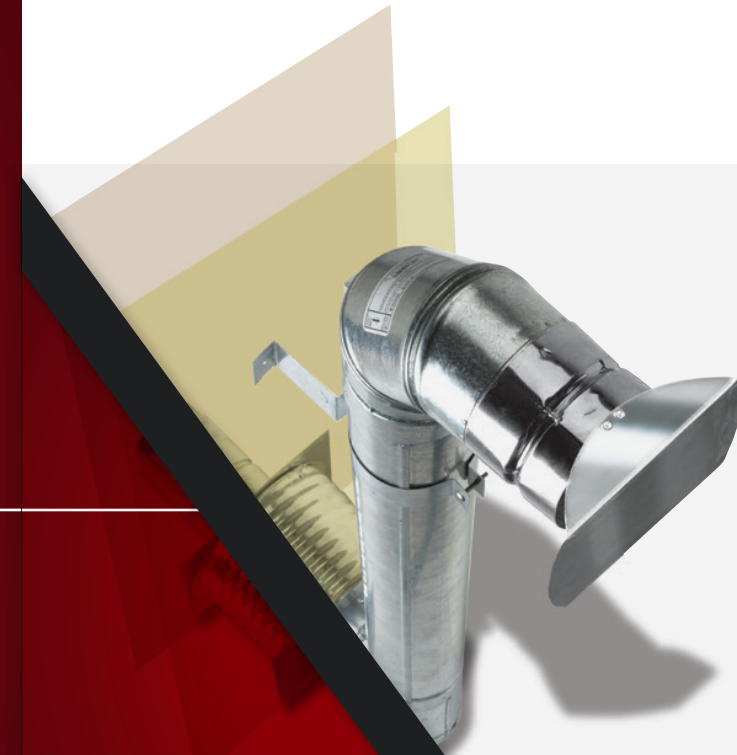


Get the Selkirk Advantage...

The tradition continues... Selkirk is the original innovator of prefabricated Venting systems – and we continue to move forward. Count on Selkirk, the world's most recognizable name in Chimney & Venting, for the widest range of high-performance products to meet your needs.

PELLETOPIPE™

VP Pellet Pipe Buyers Guide



Selkirk Corporation

5030 Corporate Exchange Blvd. SE
Grand Rapids, MI 49512
Toll Free: 1.800.433.6341

Selkirk Canada Corporation

950 South Service Road
Second Floor
Stoney Creek, ON L8E 6A2
1.888.SELKIRK (735.5475)
Toll Free Fax: 1.866.835.9624

SELKIRK



Selkirk gives you the safe, efficient, and cost-effective venting system that's engineered precisely for pellet burning stoves.



www.selkirkcorp.com



SELKIRK