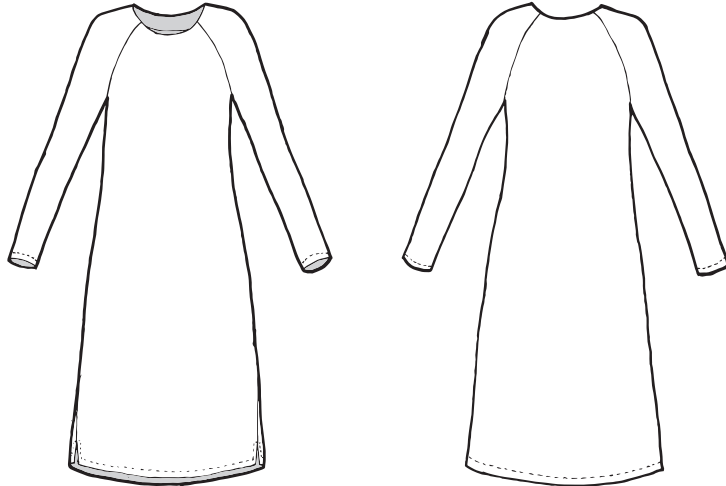
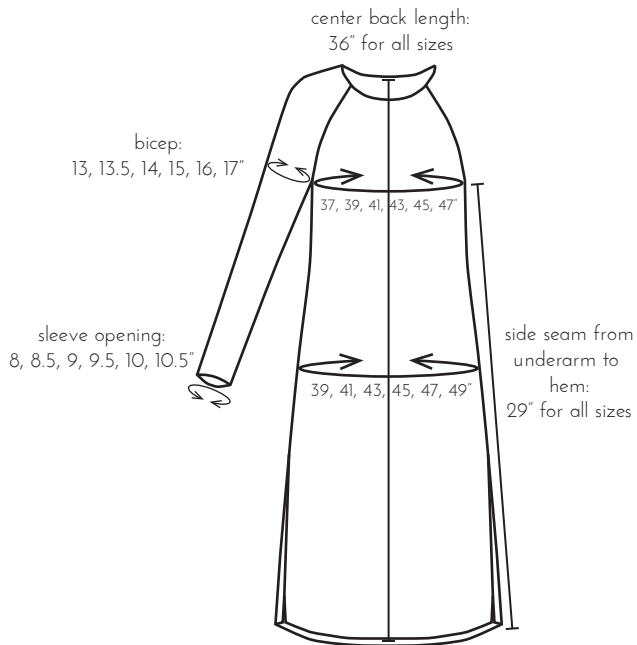




Prism Dress



This modern, raglan sleeve dress is fitted at the forearm, with minimal shaping at the waist and a straight skirt for a sleek fashion forward look. It is meant to be worn with some ease in the bust for a comfortable fit. The neckline sits close to the neck and the hem hits just above the knee so this garment can be worn as a dress, or over pants or leggings as a tunic. It can be made up from a variety of fabrics including linen, wool crepe, double-gauze or voile so you can use the pattern over and over again!



Finished Garment Measurements Inches

Bust	37	39	41	43	45	47
Hip/24" down from high point of shoulder	39	41	43	45	47	49
Center Back Length	36	36	36	36	36	36
Bicep	13	13.5	14	15	16	17
Sleeve Opening	8	8.5	9	9.5	10	10.5

Note: 3-5" of ease is recommended

Fabric Required - Yards

45"	2 1/2	2 1/2	2 1/2	2 1/2	2 1/2	2 1/2
60"	2 1/4	2 1/4	2 1/4	2 1/4	2 1/4	2 1/4



- + pattern paper for tracing
- + pattern in your size
- + pencil
- + paper scissors
- + pattern weights
- + sewing shears
- + marking pen or chalk
- + pins
- + hand sewing needle



- + main fabric
- + thread



- medium weight fabrics such as linen, double-gauze, khadi, shirting, seersucker, flannel, denim, garment weight wool, wool crepe; not necessarily suited to plaids or stripes