

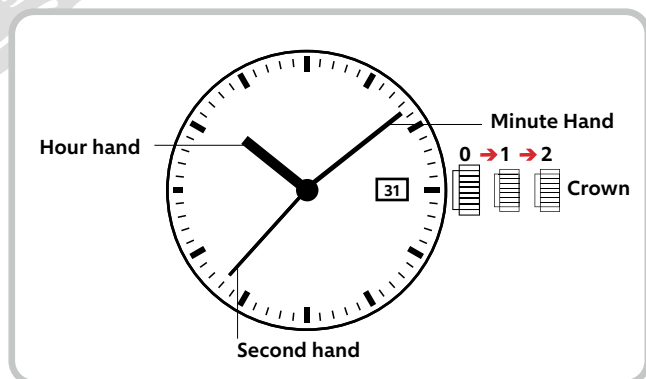


PIERRE CARDIN  
PARIS

| English

## 3 HANDS DATE MOVEMENT WATCH INSTRUCTIONS

### How to set the time



You can easily set the time by yourself by following these instructions.

#### SET THE TIME:

1. Pull time crown out to position 2.
2. Turn the crown to set the hour and minute to the desired time.
3. Push the crown back to position 1 to set the date or to position 0 to finish.

#### SET THE DATE:

1. Pull the crown out to position 1.
2. Turn the crown to set the desired date.
3. Push the crown back to position 0 to finish.

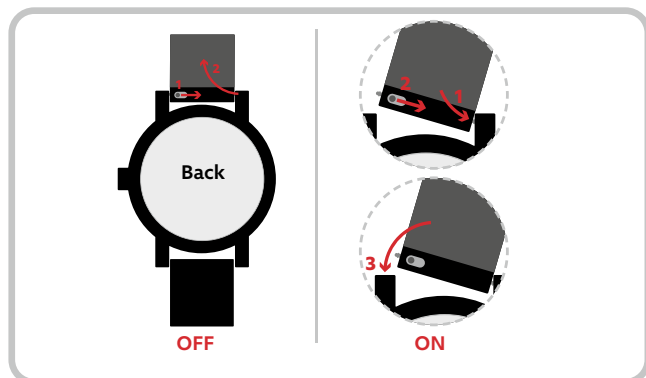
#### SET THE DAY:

1. Pull the crown out to position 2.
2. Turn the crown to set the hour, minute and 24-hour hands to the desired time and consequently change the day.
3. Push the crown back to position 1 to set the date or to position 0 to finish.

### How to change your strap

Every Pierre Cardin strap is interchangeable and can be swapped at any time to match a different look. However, not all straps fit all watches, so when buying, please make sure to get a strap that goes with your watch model.

Here are the instructions on how to remove and change your strap.



#### OFF

1. Locate the small latch on the strap and pull it.
2. While holding the small latch, remove the strap first from one lug and then from the other.

#### ON

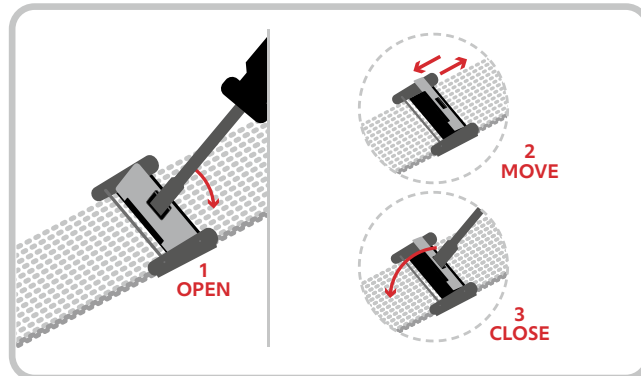
1. Locate the small latch on the strap and place the metal pin located on the opposite side of the latch into the hole inside the watch lug.
2. Pull the small latch.
3. While holding the small latch, slide the other side of the pin into the hole inside the watch lug.

**TIP:** To check that your strap is well attached and that the metal pins are inserted properly into the holes of the watch lugs, pull firmly on the strap.

### How to adjust your band

Your mesh band does not fit perfectly?

No problem, you can adjust it by yourself easily and anytime by following these instructions.



1. Gently lift up the clasp with a small tool (such as a flathead screwdriver).
2. Slide the clasp until you find your preferred length.
3. Align the clasp to the closest notch on the mesh band. When you found the correct notch marking (one that allows a smooth closing) secure the clasp by pushing it back down.

#### Attention:

Please notice that, differently from the stainless steel mesh bands, you cannot adjust the stainless steel metal band link by yourself. If your stainless steel link band does not fit your wrist size, you will need to visit your local jeweler.

The watch, as well as the strap, must not be exposed to any chemical substances such as perfume, cosmetics and cleaning products as this may cause discoloration.