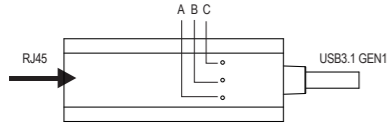


USB3.1 Gigabit Ethernet Converter
User Manual



Product Schematic Diagram



A: USB Connection Light B: Data Transceiving Light C: Network Connection Light

Product Overview

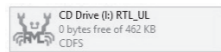
Dear users, thanks for buying USB3.1 Gigabit Ethernet Converter. It extends Gigabit network port conveniently through USB3.1 GEN1 port for laptops and enjoys the high network speed. Because of portability of USB port, it's also suitable for desktops to maintain network performance without disassembling for installation. The unique smart automatic technology for driver installation makes users easily change computer network card in order that the operation is pretty easy.

Installation and Use in Windows

1) Driver installation

Smart function of driver installation for this product makes driver installs automatically after USB is connected with a computer. Because automatic installation needs operation system to start autoplay function, please double click to help finish the driver installation if autoplay function is prohibited.

2) When finding that the driver doesn't install automatically, you can check CD-ROM from "My Computer" and double click, then the driver installation will be complete. As shown below:

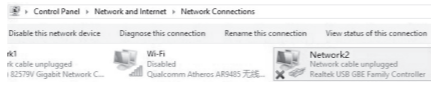


3) You can check the below information from device manager after installation to prove that the driver installation is complete.



4) The Setting of Network Function

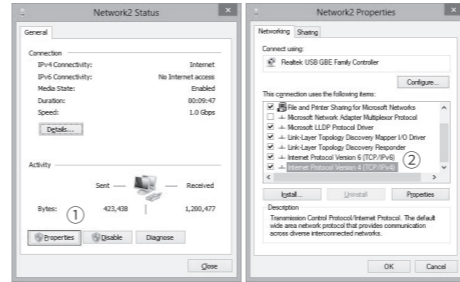
You can check a new network connection from "Control Panel—Network & Internet—Network Connection" after installation. You can connect the network normally when automatic location IP function is started.



5) Set IP Address Manually

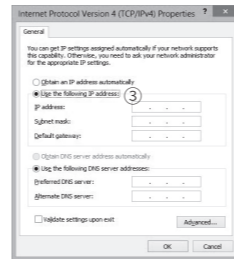
Because you need to set IP address manually for network connection in some network, please double click the above network icon and set according to the following steps.

Indication: If you still can not surf the internet normally by setting IP address manually, please ask your administrator if there is network behavior management and if you need to rebind IP and network card MAC address, please contact your administrator for the details.



Step 1

Step 2



Step 3

Installation and Use in Mac OS

Driver is unnecessary when using the device under Mac OS. You can add an USB10/100/1000LAN in "System Preference - Network" when you connect the device to the PC. You can have access to the internet connection after insert the internet cable.

FAQ

1) I cannot have access to the internet connection although I have successfully finished the installation. What's the problem?

First make sure if your router have open the IP DHCP function. If not, you need to set the IP address manually. If it is a community or school network, you need to get the authority from your administrator.

2) Can it support IPv4/IPv6 network?

Yes, you can set it in Ethernet network properties.

3) How to check the product MAC address?

Run "ipconfig /all" order under Windows to check the Mac address.

4) Can it support Mac OS system?

Yes, you can use it without driver.

5) Why I need to re-plug the network to make it worked when I restart the PC under Mac OS system?

This is not the product failure, it is because of the driver identify failure that cause the problem. You can download the Mac OS driver form our product website and install it manually. The problem can be solved then.

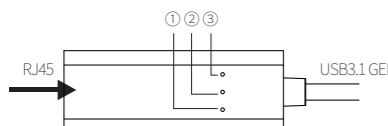
6) How to check the MAC Address under MAC OS?

You can check the MAC address by click "Network Preference - USB10/100/1000LAN - Advanced Options - Hardware".

USB3.1 Gigabit Ethernet Converter
使用指導



產品外觀示意圖



① ACT指示燈，數據收發狀態 ② 電源指示燈
③ LINK指示燈，顯示網路連接狀態

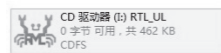
產品簡介

尊敬的用戶，感謝選用本公司生產的 USB3.1 千兆網卡，本產品可通過 USB3.1 GEN1 介面方便的為筆記本擴展千兆網路介面，充分發揮網路傳輸性能。由於 USB 介面的便攜性，也可用於臺式電腦免工具免拆卸安裝維護網路功能，獨有的智能驅動自動安裝技術，使一般用戶也可以簡單的更換電腦網卡，使操作變得簡單易用。

Windows 下的安裝與使用

(一): 驅動的安裝，本產品具有智能驅動安裝功能，將 USB 連接電腦後，驅動便自動進行安裝。由於自動安裝需要操作系統開啟自動播放功能，如果自動播放功能被禁用則需要手動雙擊來幫助完成。

(二): 如果發現驅動未自動安裝，可以在“我的電腦”查看到一個 CD-ROM，雙擊運行即可完成安裝。如圖：



(三): 安裝完成後可以設備管理器查看到如下資訊，證明驅動安裝成功。



(四): 網路功能設置

安裝成功後可在“控制面板—網路和 Internet—網路連接”查看到新的網路連接。如果網路開啟了自動分配IP功能，便可以正常連接網路了。



(五): 手動設置IP地址

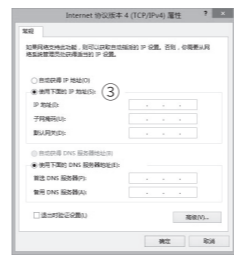
由於一些網路需要手動設定 IP 才能上網，雙擊以上網路圖示並按以下步驟設置。

提示: 如果你發現手動設定 IP 還不能正常上網，請詢問你的網路管理員是否有網路行為管理，是否需要重新綁定 IP 和網卡 MAC 地址，詳情需要聯繫你的網路管理員。



步驟 1

步驟 2



步驟 3

Mac OS下的安裝與使用

本產品在Mac OS免驅使用，插入本產品後，可在[系統偏好設置-網路]可添加一個USB10/100/1000LAN，連接網路線便可以接入網路。

常見問題解答

1) 我按照如上步驟安裝後沒有問題，但是還是不能上網?

答: 請檢查您的路由器是否開啟了 IP 自動獲取功能 (DHCP)，如果沒有開啟需要手動設置 IP 地址才可正常連接互聯網，如果是社區或學校網路，需要聯繫管理員取得 IP 和上網許可權才可以正常連接互聯網。

2) 是否可以支持IPv4/IPV6網路?

答: 本產品支持此類網路，在網路以太網屬性內可進行設置。

3) 如何查看本產品的MAC地址?

答: 在Windows系統下可以使用[運行]ipconfig/all命令查看網卡MAC地址。

4) 在 Mac OS 系統可以使用本產品嗎?

答: 可以免驅使用，插入即可自動識別。

5) 在 Mac OS 下有時重啟需要重新插拔網卡才能使用網卡功能是什麼原因?

答: 這並不是產品故障，而是驅動識別而引起的故障，遇到此問題，只需要去產品官網下載 Mac OS 驅動手動安裝即可

6) Mac OS 下如何查看 MAC 地址?

答: 點擊[打開網路偏好設置-選中 USB10/100/1000LAN-高級-硬體]便可查看 MAC 地址。