



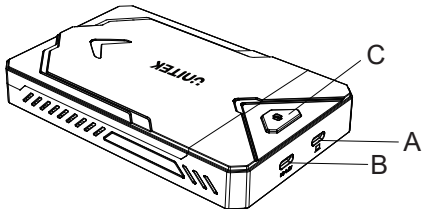
Human friendly

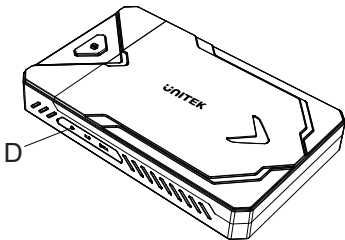
USB Type-C M.2 /SATA Enclosure

User Manual

Thank you for choosing Unitek USB Type-C M.2 /SATA Enclosure . Please read the user manual carefully before use and save them. If you need any help, please contact our professional customer service team at: support_us@unitek-products.com

Product Overview





- A-Type-C Female Port
- B-Type-C Power Supply Port
- C-On/Off Button
- D-LED Status Light

Product Features

1. plug-and-play, no driver required
2. tool-free extraction design of SATA interface, easy to disassemble and install;
3. USB 3.2 10Gbps transfer rate, giving full play to transmission performance;
- 4.Type C interface, easy to use for connection, no need to distinguish between the front and back;
5. support PCIE Gen 3x2 NVME 1.3 M.2 SSD;
6. support multi-size M.2 SSD specifications compatible (2242mm/2260mm/2280mm).
7. support for SSD TRIM command and UASP acceleration;

- support for PCIe3.1a M.2 interface and SATA3.1 interface protocols respectively, displaying dual disk characters at the same time; support for dual disk simultaneous reading, more new and old storage devices are also easily transferred;
- support native command queue (NCQ)
- Compliant with SATA specification (revision 3.1)

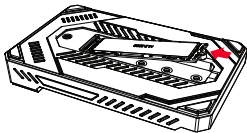
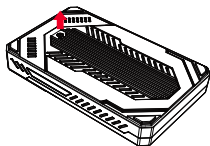
LED light Signal

- power light, green, always on when powered on.
- SATA/M.2 disk position light, yellow, corresponding to the hard disk device is inserted when the light, read and write flashing. 30 minutes no read and write hibernation state, hibernation disk position light off state.

Note: the power switch key, the default power is on, long press for 3 seconds to turn off the power function in the case of power.

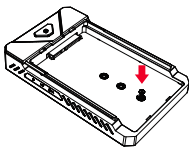
Easy Installation

M.2 SSD

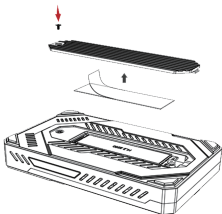


1. Unscrew the screws to open the enclosure

2. Insert your M.2 SSD into the slot and installing the retaining nut.

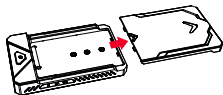


3. Install the fixing screws from the reverse side.

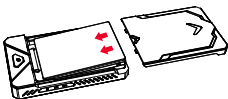


4. Stick the cooling pads on the cover, tighten the screws that hold the disk in place.

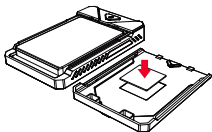
SATA



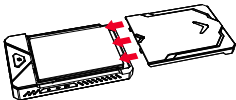
1. Push to open the enclosure



2. Insert your 2.5" SATA SSD into the slot



3. Stick the sponge pads on the shell (more stable)



4. Close the shell and connect the devices to use

Note

1. The M.2 SSD port of this product adopts the M Key interface, which belongs to PCIe & NVMe protocol channel, please check the interface and protocol channel of the hard disk when installing M.2 SSD for this product;
2. Although the USB side of the product supports hot-swapping, when installing M.2 and SATA disks, it must be done under a power failure;
3. When disassembling and installing the hard disk cage, please keep all accessories properly to prevent loss;
4. After use, if you need to remove the SSD/HDD disk or replace the uplink PC side device for use again, it is recommended that the user safely eject the device by using the button on the bottom right corner of the system to safely remove the USB peripheral icon, then turn off the power and remove the device or reconnect it to a new uplink PC side device for use.

Package Contents

- 1x M.2/SATA Enclosure
- 1x USB A&C Cable
- 1x Mini Screwdriver
- 2x Screws
- 2x Sponge protection block
- 2x Silicone sticker
- 2x SSD retaining nut

Warrant

The Unitek External Compact Disk Drive covered by Unitek warranty for 24 months. If the product fails due to manufacturer defects, please contact us by email at: support_us@unitek-products.com

