

# RefectoCil

## Intense Brow[n]s™

Welcome  
to a new era  
of brow and  
lash styling.

*Tint it!*

# 01\_

## THE PRODUCTS

ASSORTMENT

BENEFITS

TARGET GROUP

# 02\_

## THE EFFECT

BEFORE AND AFTER

DIFFERENCE TO OXIDATIVE TINTS

# 03\_

## STEP BY STEP

FULL BROW TECHNIQUE

OMBRÉ SHADING TECHNIQUE

BROW FILLING TECHNIQUE

LASH TINTING

# 04\_

## SALON TOOLS

CHEAT SHEETS

FAQS

AFTERCARE CARDS

# RefectoCil

Intense Brow[n]s™ – a brand of GW Cosmetics®

Get to know the company:



## GW COSMETICS®

- Pioneer for eyelash and eyebrow tints.
- Expert in natural cosmetic products.
- Austrian based and owner managed.
- Producer of premium and innovative cosmetic products, delivering highest quality with decade-long experience.
- Making lives of consumers simpler and more enjoyable.
- Supporting professionals in offering the most premium brow & lash styling services for their clients.

### GW Cosmetics® mission statement

Today, GW Cosmetics® is an expert for brow- and lash styling and skincare as well as for natural cosmetics. In developing our brands and innovative products we build on our experience and our intensive cooperation with our global partners.

We follow the principles of simplicity, openness and courage: our structures and decisions are transparent and forward-looking.

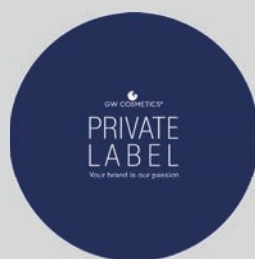
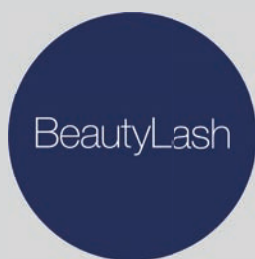
The success of GW Cosmetics® arises from our passion for beauty and cosmetics and our aspiration to deliver the highest quality. As producer of premium and innovative cosmetic products we strive to make the lives of our consumers simpler and more enjoyable.



**Rainer Deisenhammer**  
Founder of GW Cosmetics®

“I am convinced that treating each other as human beings is key for enjoying work and that in a work environment dominated by understanding and partnership, we can develop the passion needed to reach a new level of excellence.”

### Brands of GW Cosmetics



Passion for beauty. Passion for excellence. Passion for people.



# RefectoCil Intense Brow[n]s™



01 — THE PRODUCTS

**RefectoCil**  
Intense Brow[n]s™

# An innovative and FDA compliant brow and lash tinting system



## Welcome to a new era of Brow & Lash Styling!

INTENSE BROW[N]S BY REFECTOCIL™ and BROW INTENSIFYING BY REFECTOCIL™ have already been registered as trademarks. With the Tint it! slogan, they promise an intensely accentuated brow area, through a semi-permanent and individually adaptable make-up effect, as well as expressive, dramatic eyelashes. The perfect non-invasive alternative to PMU or Microblading!

INTENSE BROW[N]S BY REFECTOCIL™ are perfect for customers who prefer intense yet natural-looking brows and eyelashes. The new and innovative service BROW INTENSIFYING BY REFECTOCIL™ achieves this style with an additional and tailor-made make-up effect that lasts for a few days.

Like all RefectoCil® products, they are produced in Austria according to the highest quality standards –

**Made in Austria by GW Cosmetics®.**

RefectoCil® is the quality brand for eyebrow and eyelash products that professionals around the world trust to achieve perfect results for their customers. For several years now, intensive work has been done on the introduction of the first FDA-approved brow & lash tinting system in the USA - with success:

RefectoCil® was the first professional brand ever to receive FDA approval for its patented INTENSE BROW[N]S BY REFECTOCIL™ eyebrow and eyelash tinting system. RefectoCil®'s entry into the US market is a milestone in the international development of the brand.



**1 convenient kit for professionals**

For up to 60 services

# 01 THE PRODUCTS ASSORTEMENT

## Intense Brow[n]s™ Professional Kit Content:



Optional:

### Intensifying Primer

Prepares eyebrow area for a more intense make-up effect. For longer lasting results. Choose between "Medium" and "Strong".



Step 1:

### Base Gel

Base Gel for Intense Brow[n]s™ is available in 4 colors:

- ash brown
- chocolate brown
- dark brown
- black brown



Step 2:

### Activator Gel

The Activator Gel contains Silver Nitrate that tints brows and lashes from deep within.

More information on the chemical process see Chapter 2, The Effect\_Difference to oxidative tints.



150ml

### Micellar Eye Make-up Remover

Strengthens brows & lashes and attracts eye make-up thanks to micellar\* technology „magnetically“. It cleans thoroughly – no rubbing!



150 ml

### Tint Remover

Removes stains that develop during tinting easily and quickly. **Only suited for INTENSE BROW[N]S BY REFECTOCIL™ tints.**



### Browista Toolkit

The kit contains two brushes that allow finest detail work. Two application dishes are also part of the set.

### Brow Mapper

The RefectoCil Brow Mapper allows precise brow mapping but also is used to draw the outline of the brow shape before tinting.

# 01 THE PRODUCTS

## BENEFITS



of the tints are "Made in Austria"



vegan-certified tinting system



animals used  
for testing

### Patented tinting system with a mild formula

Create beautifully tinted lashes and fuller looking eye-brows with RefectoCil®'s brow and lash tints. Patented, very mild formula. It is also suitable for clients that are prone to allergies or have sensitive skin – all clients can be serviced.

### Simple and safe service

Choose one of the newly developed Brow Intensifying techniques to respond to individual brow needs. The results are intense, smudge- as well as waterproof and last for up to 6 weeks. It's a safe and profitable brow and lash service.

### Customized make-up effect

Add a special wow to the brows! Use the Intensifying Primer at the beginning of each brow service to customize and prolong the make-up effect. For even longer lasting and more intense results!

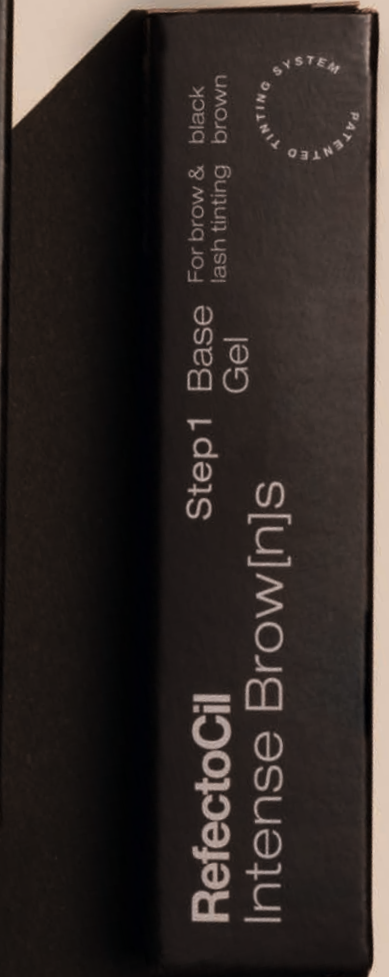
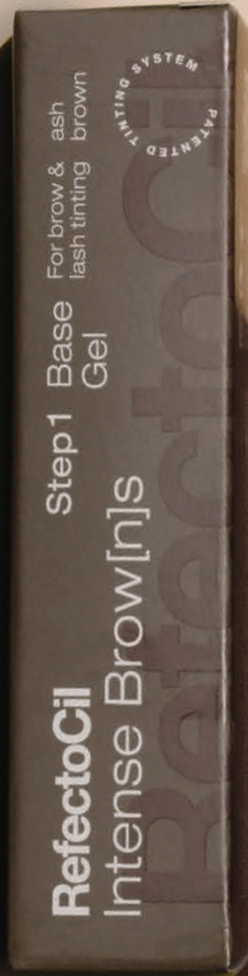
### Vegan-certified and highest product quality

RefectoCil Intense Brow[n]s™ are vegan-certified and "Made in Austria", complying to highest product and quality standards while respecting nature.





# Brow Intensifying by **RefectoCil**<sup>™</sup>



# 01 THE PRODUCTS

## TARGET GROUP

RefectoCil Intense Brow[n]s™ is a new brow and lash tinting system that expands your target group and thus makes even more customers happy.

## for professionals

We want your clients to walk out of the salon happy, glowy and self-confident.

### Extend your service offer

Add the new trend service Brow Intensifying by RefectoCil™ to your styling offer. Create impactful brows and expressive lashes - for the special „WOW your clients are looking for!

### Natural-looking alternative

With the way Intense Brow[n]s™ creates fuller looking brows and a customized make-up effect, it stands as a natural looking alternative to permanent make-up or microblading.

### Safe and simple

Carefully tested, vegan-certified and with an FDA-approved color additive, Intense Brow[n]s™ creates most intense and brilliant looks in only a few steps.



## for clients

The new trend service Brow Intensifying by RefectoCil™ is especially developed for clients that are looking for an intense result. It emphasizes the look of women and men that have rather dark hair or blondes that want a contrast brow effect.

### Expressiveness

The ideal brow and lash styling service for clients who want to emphasize the eye area. Brows are fuller looking and more defined due to a customized and semi-permanent make-up effect.

### Certainty

With Intense Brow[n]s™, clients with sensitive skin or who are prone to allergies can have a professional brow and lash styling service, due to a very mild formulation that prevents the skin from irritation.

### Confidence

Making short eyelashes seem longer and sparse or thin brows fuller looking, giving an intense brow look for days to come.

# 02

RefectoCil  
Intense Brow[n]s™



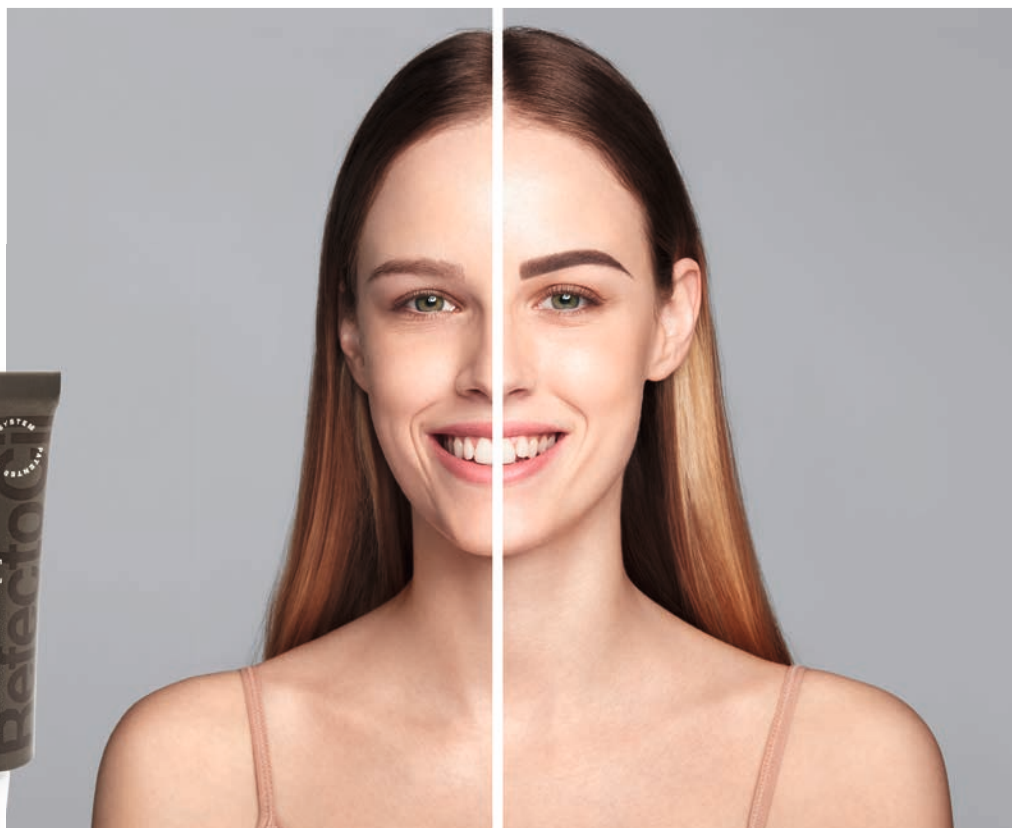
## THE EFFECT

Discover the impactful before and after effects of Intense Brow[n]s™ and learn all about the chemical process behind it. Additionally, the differences to the oxidative tints from RefectoCil® are explained on the following pages.

## 02 THE EFFECT — BEFORE & AFTER

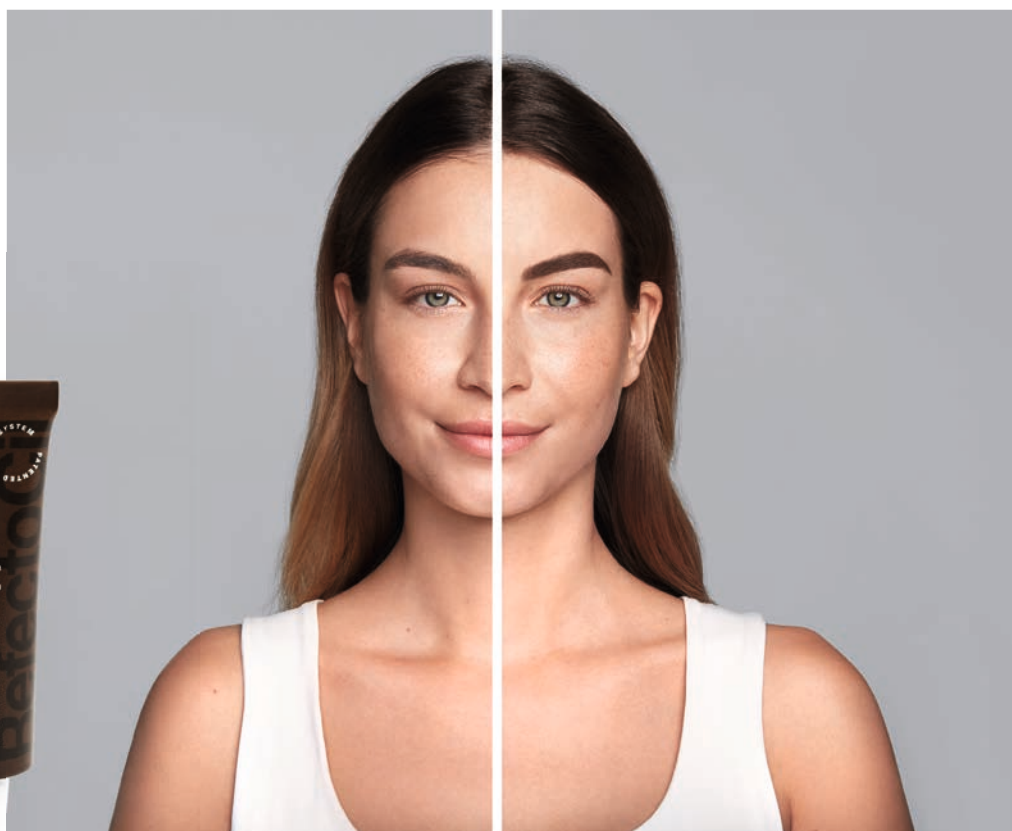
### Ash Brown

For lighter skin- and hair color types. A cool and ashy shade of brown that suits neutral and cold color types well.



### Chocolate Brown

For natural brunette brows and light lashes. A medium brown shade with a slight warm undertone.



## RefectoCil Intense Brow[n]s™



### Deep Brown

For natural looking lashes and dark brows. A particularly dark shade of brown, for striking and eye-catching looks.



### Black Brown

For very dark lashes and intense eyebrows. The almost black shade gives the face a strong frame.



# 02 THE EFFECT

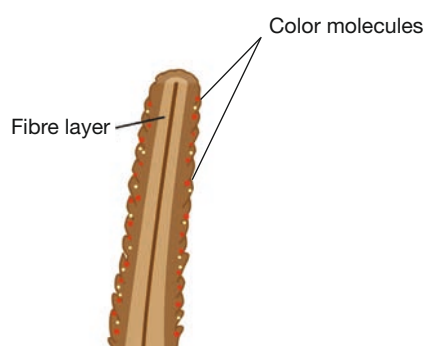
## DIFFERENCE TO OXIDATIVE TINTS

### Intense Brow[n]s™

#### Chemical effect:

Intense Brow[n]s™ is based on silver nitrate\*. The gels are not mixed. A gel is applied after the other. In between, the hair/skin is dried and then comes the next gel. Silver nitrate opens only minimally the hair structure, the pigments are not stored in the hair, but adhere all around. The coloring of the hair lasts up to 6 weeks and the make-up effect up to 10 days.

**In summary: A make-up effect is created on the skin. Hair is dyed intensively. Available in 4 colors.**



\*Explanation silver nitrate: is a chemical compound, a salt of nitric acid. It forms odorless and colorless crystals that are water-soluble. It is anti-inflammatory and antibacterial. Used to be dripped into the eyes of newborns to prevent eye disease. Used in cosmetics, homeopathy and medicine.

#### Color effect:

In addition to hair tinting, a beautiful make-up effect of the skin staining is created. This replaces the eyebrow pencil. You can use it to correct, reshape, replenish or completely model the brows. The durability on the skin is influenced by the aftercare at home. See Aftercare Cards, Chapter 04\_Salon Tools. For the time until the next appointment, one of our Line & Shine brow pens can be recommended to the customer. More information on the RefectoCil Line & Shine Range: see Book of Brows and Lashes.



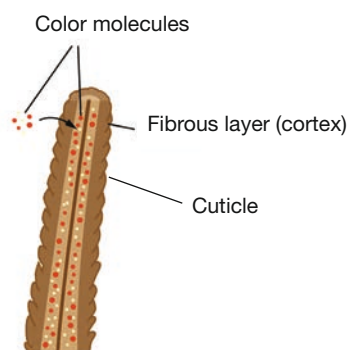
**Intense Brow[n]s™**  
Ash brown

### Oxidative Tints

#### Chemical effect:

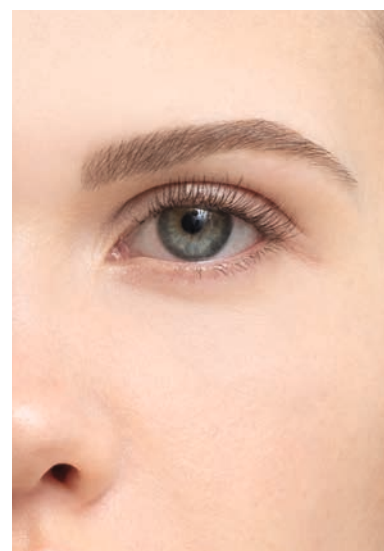
Oxidative tints are mixed with hydrogen peroxide. The color paste is mixed with RefectoCil Oxidant 3% in a certain ratio (1:1). The hydrogen peroxide opens the hair structure and the color pigments are stored in the hair. The coloring of the hair lasts up to 6 weeks.

**In summary: Hair is dyed intensively, available in 8 colors and one bleaching paste (Blonde Brow).**



#### Color effect:

Oxidative colors tint the hair. A light skin staining effect can only be achieved if the color is active for a very long time (up to 20 min.) However, this skin stain only lasts until the next wash.

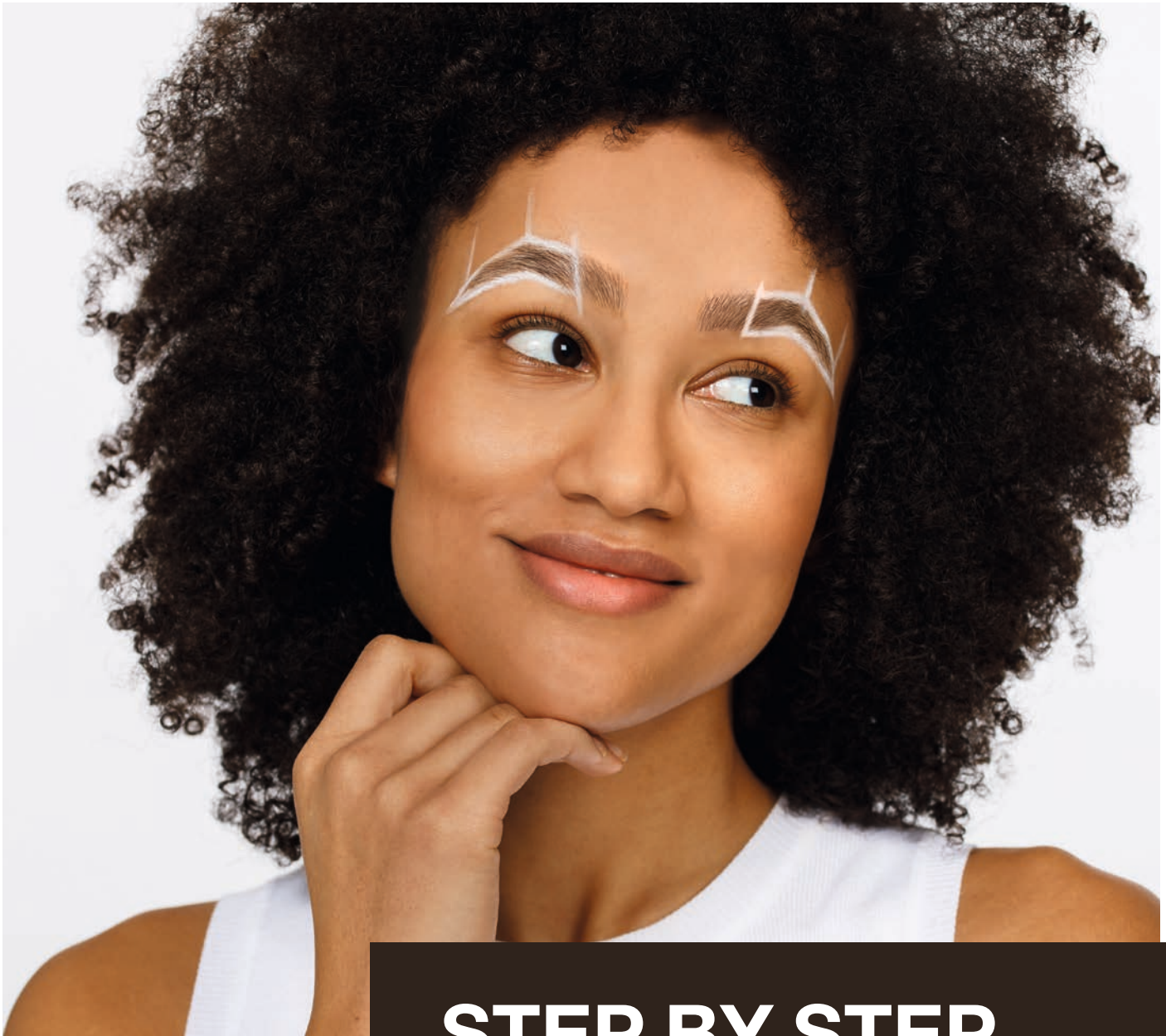


**Oxidative Tints**  
Lightbrown

# 03

---

RefectoCil  
Intense Brow[n]s™



## STEP BY STEP

The individual RefectoCil Intense Brow[n]s™ applications for eyebrows and eyelashes are explained step by step on the following pages. We have developed 3 eyebrow tinting techniques and an eyelash tinting system to meet every customer need.

## 03\_STEP BY STEP

# Brow Intensifying by RefectoCil™

FOR PROFESSIONALS  
**R**  
STATIONALS

Create most intense and customized looks with RefectoCil Intense Brow[n]s™. Fulfill clients individual brow needs by choosing one of 3 Brow Intensifying techniques.

**Developed by professionals.  
For professionals.**



### **Full Brow Technique**

For a particularly intense look!

The basic application that ensures a smooth and full-surface color build-up on the skin and hair.

Ideal for customers who want a very intense results or when brows need to be remodeled.



### **Ombré Shading Technique**

For a natural, feathery-light look!

This technique ensures a wonderful and gentle color gradient. The eyebrow is intensely emphasized in the back and becomes brighter to the front.

Ideal for customers who want a natural look and where no remodeling of the eyebrows is necessary.



### **Brow Filling Technique**

For a more contoured and defined brow look!

This special technique provides a gently restrained effect. The front area of the brows is not tinted, the transition between tint and natural hair is worked out with a rubber spoolie.

Ideal for customers who already have dense and dark eyebrows but want more definition.

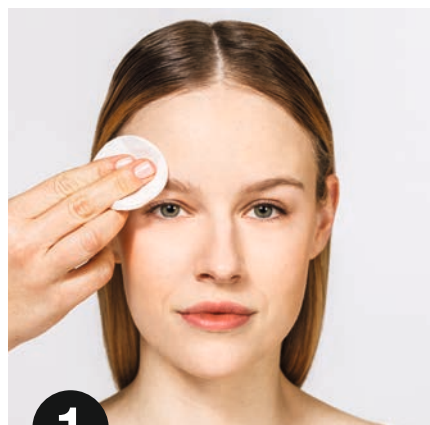


# Full Brow Technique

RefectoCil  
Intense Brow[n]s™

The Full Brow Technique is the basic application that ensures a smooth and full-surface color build-up on the skin and hair. For a particularly intense look.

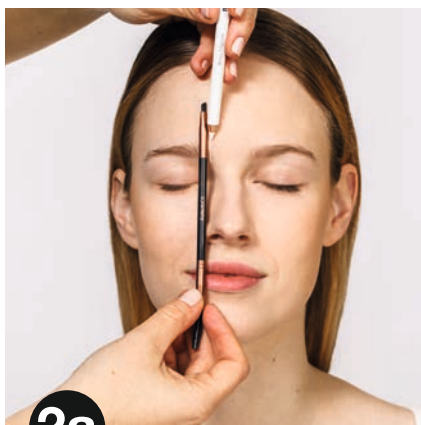
Ideal for: Customers who want a strong effect or where a remodeling of the eyebrow is necessary, e.g. hairs are missing.



1

## Cleaning

Clean eyebrows before tinting using the RefectoCil Micellar Eye Make-up Remover (or RefectoCil Brow & Lash Foam) and RefectoCil Saline Solution. If the skin is very dry, exfoliate the eyebrow area with a soft peeling product (e.g. MasterLin Facial Peeling)



2a

## Mapping

Measure the perfect brow shape with the RefectoCil Brow Mapper. Start of eyebrow: Don't hold the brush to the outer edge of the nose, but to the nostril: This is where the eyebrow begins.



2b

## Mapping

Beginning of arch: Hold the brush at an angle across the eye, through the outer edge of the pupil: This is where the arch begins.

The further steps can be found on the next page.

# 03\_STEP BY STEP

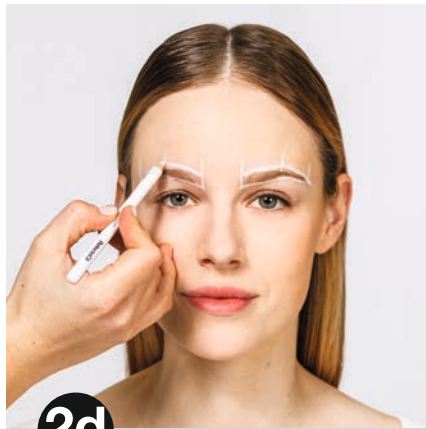
## FULL BROW TECHNIQUE



2c

### Mapping

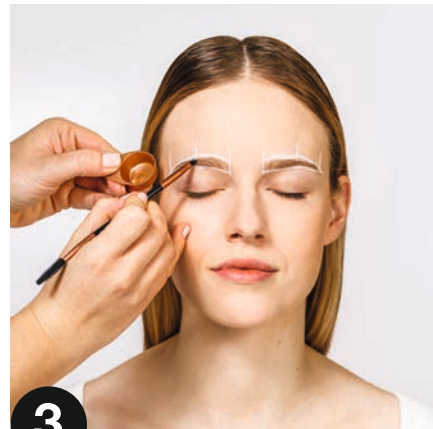
End of eyebrow: Hold the pen at an angle from the nostril to the outer corner of the eye: This is where the eyebrow ends.



2d

### Mapping

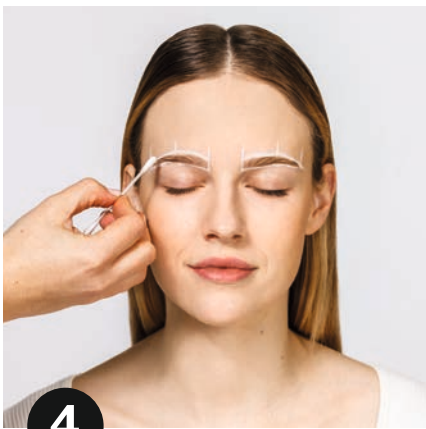
Connect the lines and draw a frame in the desired shape of the brows. For the most precise shape, use the advanced Brow Mapping method. See Book of Brows and Lashes, Chapter 03\_The Basics/Brow Mapping



3

### Primer

Choose the product according to the skin type. Open the Intensifying Primer and put a pea-sized amount into one of the cosmetic dishes. Apply the Intensifying Primer to the eyebrows and skin with the RefectoCil cosmetic brush. **Application time: 4 minutes.**



4

### Remove

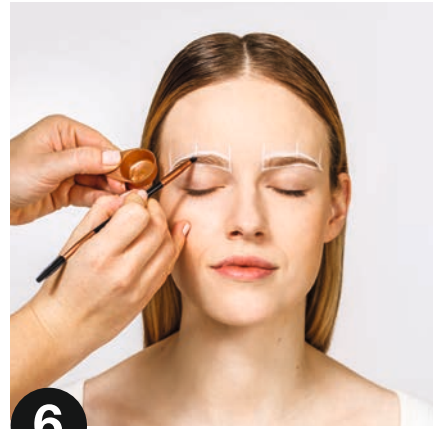
Remove the RefectoCil Intense Brow[n]s Intensifying Primer using a dry cotton swab.



5

### Wait!

Important: Let the brows dry for 4 minutes before the next step or use a brow & lash fan to speed up the drying process. To achieve best results the brows have to be dry before the next step.



6

### Base Gel

Use a clean brush. Select the desired color. Open the Base Gel (Step 1) and squeeze a pea-sized amount of it into a clean cosmetic dish. Apply the Base Gel to brows & skin evenly in the direction of hair growth. **Application time: 2 minutes!**

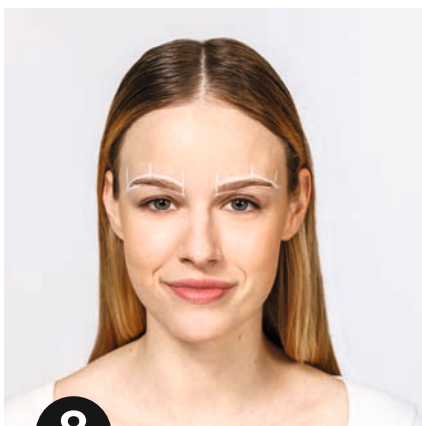
## RefectoCil Intense Brow[n]s™



7

### Remove

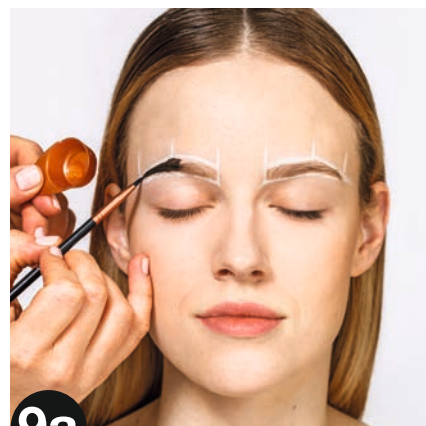
Remove Base Gel using a dry cotton swab.



8

### Wait!

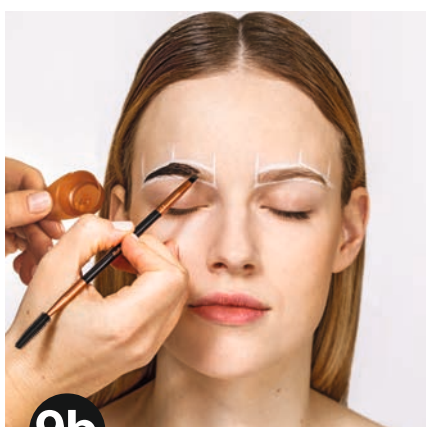
Important: Let the brows dry for 4 minutes or use a brow & lash fan to speed up the drying process.



9a

### Activator Gel

Use a clean brush. Open the Activator Gel (Step 2). Squeeze a pea-sized amount of the Activator Gel into a clean cosmetic dish and apply the Activator Gel to brows & skin. Start brushing at the end of the brow.



9b

### Activator Gel

Continue to the middle and front part. Work very precisely. **Application time: 1 minute** (Activator Gel lets the hair appear to be very dark, but this is not the final tinting result)



9c

### Activator Gel

If needed: Use a little bit of RefectoCil Skin Protection Cream & Eye Mask to correct the brow shape.



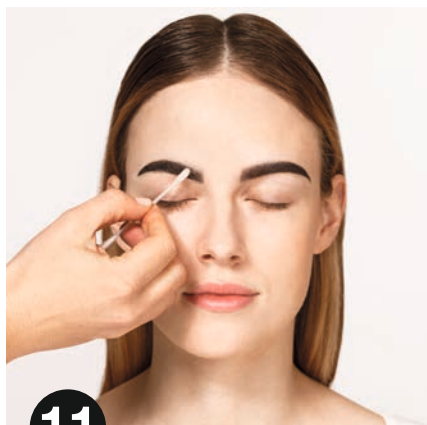
10

### Remove

Remove Activator Gel with a wet cotton pad.

# 03 STEP BY STEP

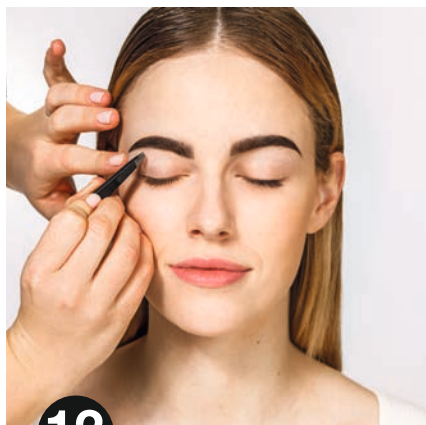
## FULL BROW TECHNIQUE



11

### Final Touch

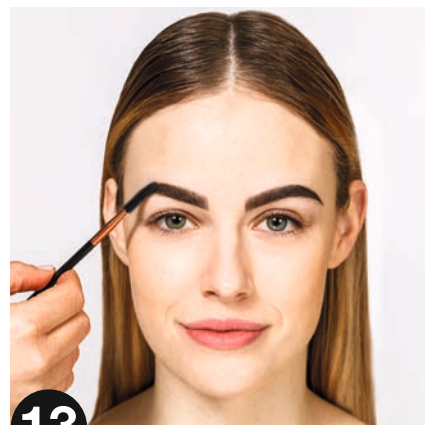
Remove any unwanted stains using a dry cotton swab with the RefectoCil Intense Brow[n]s Tint Remover. Use the RefectoCil Intense Brow[n]s Tint Remover to correct the shape of the brows if needed or to remove tint spots.



12

### Shape

Now you can shape the brows with the RefectoCil Precision Brow Tweezer.



13

### Care

Apply the RefectoCil Styling Gel to nourish the eyebrow hair and provide shine.

Info - In the salon:  
For hygienic reasons it is important not to use the same brush on all customers. Remove the Styling Gel from the tube with a clean RefectoCil brush and apply it with the rubber spoolie.

**The effect:**  
Full Brow Look

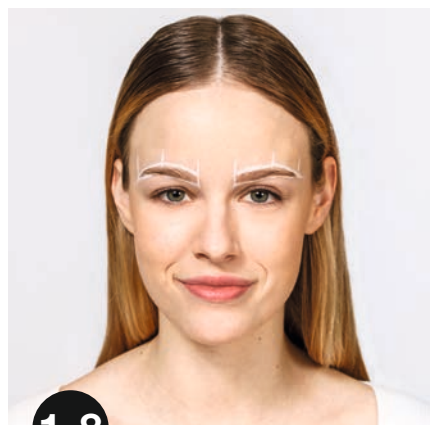


# Ombre Shading Technique

RefectoCil  
Intense Brow[n]s™

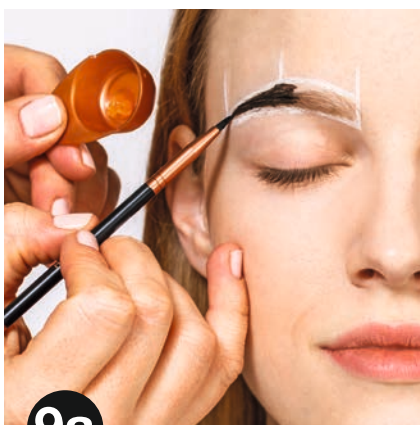
The Ombre Shading Technique ensures a wonderful and gentle color gradient. The eyebrow is intensely emphasized in the back, while it becomes brighter in the front third, providing a very natural, feathery-light look.

Ideal for: Customers who want a natural look and where no remodeling of the eyebrows is necessary.



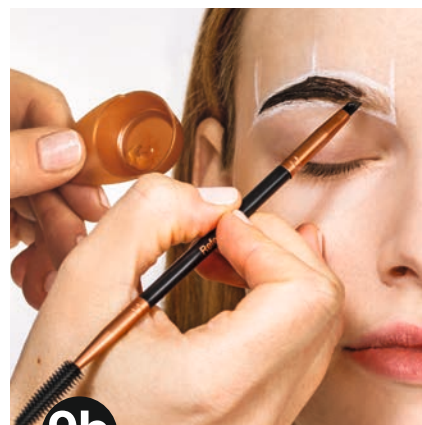
## Repeat!

The Ombre Shading differs from the Full Brow technique in the way the Activator Gel is applied. Therefore, repeat steps 1-8 of the Full Brow technique.



## Activator Gel

Use a clean brush. Open the Activator Gel (Step 2). Squeeze a pea-sized amount of the Activator Gel into a clean cosmetic dish and apply the Activator Gel to brows & skin. Start brushing at the end of the brow.



## Activator Gel

Continue to the middle and front part. Work very precisely.

The further steps can be found on the next page.

## 03\_STEP BY STEP

# — OMBRE SHADING TECHNIQUE



**9c**

### Use rubber spoolie

In the front area of the eyebrow, apply the Activator Gel with the spoolie and be careful not to touch the entire surface of the skin.

**Application time: 1 minute.**



**9d**

### Use rubber spoolie

In the front area of the eyebrows, focus on the hairs instead of the skin. Slightly brush the eyebrows to create a smooth effect.



**10**

### Remove

Remove Activator Gel with a wet cotton pad. Remove any unwanted stains or correct the shape with RefectoCil Intense Brow[n]s Tint Remover. Now you can shape the brows. Apply the RefectoCil Styling Gel to nourish the eyebrow hair and provide shine.

### The effect:

Ombre Shading Look



# Brow Filling Technique

RefectoCil  
Intense Brow[n]s™

The Brow Filling Technique provides a gently restrained effect. Here, the front area of the eyebrow is completely omitted and not colored. The transition between color and natural hair, is worked out with the rubber spoolie.

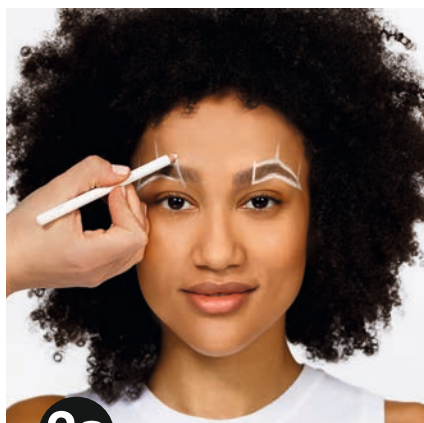
Ideal for: Customers who naturally have particularly dense, dark and intense eyebrows but want more contour and definition.



1

## Cleaning

Clean eyebrows before tinting using the RefectoCil Micellar Eye Make-up Remover (or RefectoCil Brow & Lash Foam) and RefectoCil Saline Solution. If the skin is very dry, exfoliate the eyebrow area with a soft peeling product (e.g. MasterLin Facial Peeling)

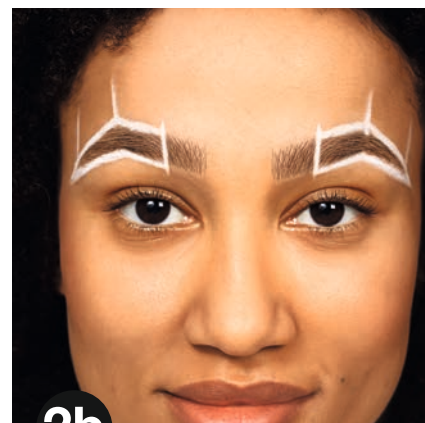


2a

## Mapping

Measure the eyebrows according to the 3 point method, see Full Brow Technique. Connect the lines into a frame.

**Leave out the front third and draw a boundary line if necessary.**



2b

## Mapping

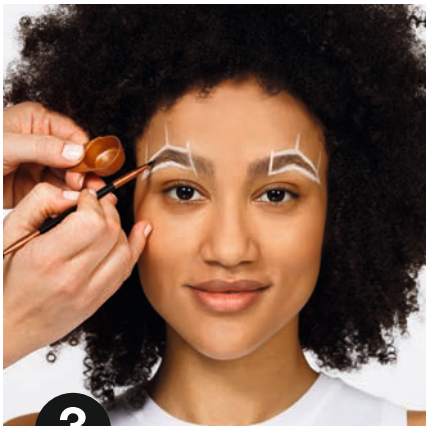
The front area is not being tinted to create a very soft and natural make up effect.

The next steps are applied only in the marked frame.

**The further steps can be found on the next page.**

# 03 STEP BY STEP

## BROW FILLING TECHNIQUE



3

### Intensifying Primer

Choose the product according to the skin type. Open the Intensifying Primer and put a pea-sized amount into one of the cosmetic dishes. Apply it to brows and skin only in the measured template.  
**Application time: 4 minutes.**



4

### Remove

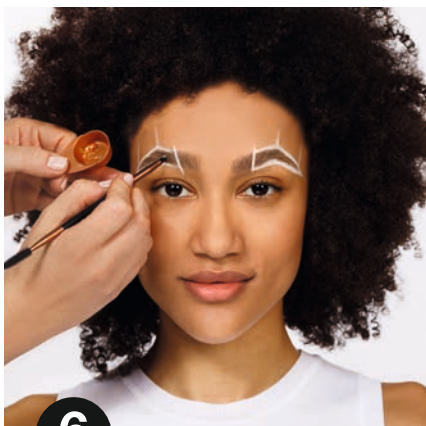
Remove the RefectoCil Intense Brow[n]s Intensifying Primer using a dry cotton swab.



5

### Wait!

Important: Let the eyebrows dry for 4 minutes or use a brow & lash fan to speed up the drying process before the next step. To achieve best results the brows have to be dry before the next step.



6

### Base Gel

Use a clean brush. Select the desired color. Open the Base Gel (Step 1) and squeeze a pea-sized amount of it into a clean cosmetic dish. Apply the Base Gel to brows & skin evenly in the direction of hair growth. **Application time: 2 minutes.**



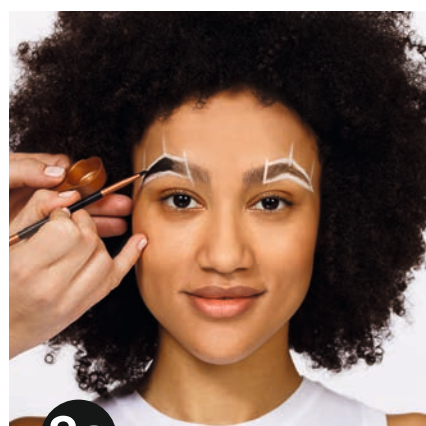
7

### Remove

Remove Base Gel using a dry cotton swab.

### Wait!

Important: Let the eyebrows dry for 4 minutes or use a brow & lash fan to speed up the drying process before the next step.

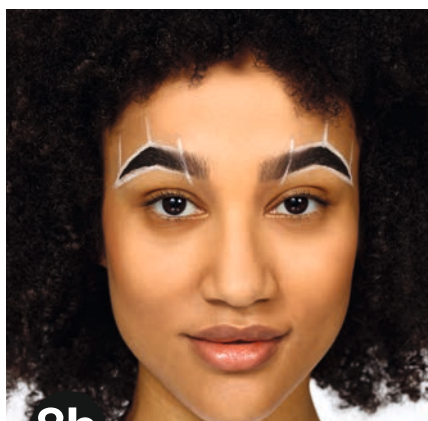


8a

### Activator Gel

Use a clean brush. Open the Activator Gel (Step 2). Squeeze a pea-sized amount of the Activator Gel into a clean cosmetic dish and apply the Activator Gel to brows & skin. Start brushing at the end of the brow. Continue to the middle last part of the template. Work very precisely.





**8b**

**The transition**

In the front area of the template, use the spoolie and brush a little beyond the boundary line to create a smooth transition to the untreated hairs.

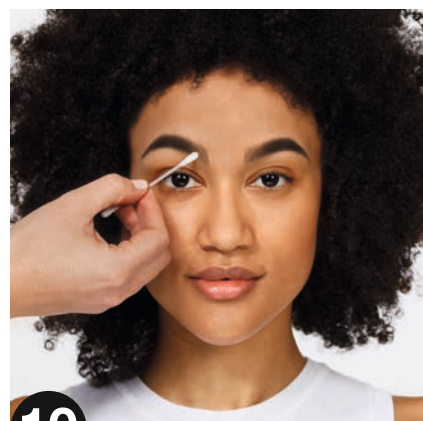
**Application time: 1 minute.**



**9**

**Remove**

Remove Activator Gel with a wet cotton pad.



**10**

**Final touch**

Remove any unwanted stains using a dry cotton swab with the RefectoCil Intense Brow[n]s Tint Remover. Use the RefectoCil Intense Brow[n]s Tint Remover to correct the shape of the brows if needed or to remove tint spots.

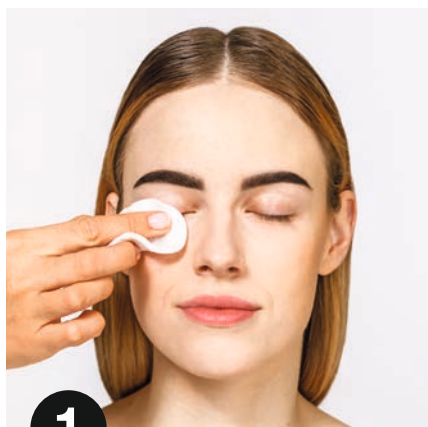
**The effect:**  
Brow Filling Look



# Lash Tinting

Eyelashes can also be dyed with RefectoCil Intense Brow[n]s™. No primer is needed for this, as no skin coloration is necessary.

Start the application with the Base Gel. Due to the herbal ingredients, Intense Brow[n]s™ is particularly suitable for sensitive customers and customers that usually tend to feel uncomfortable during lash tinting.



**1**

## Cleaning

First remove contact lenses. Clean eyelashes before tinting using the RefectoCil Micellar Eye Make-up Remover (or RefectoCil Brow & Lash Foam) and RefectoCil Saline Solution.



**2**

## Eye Care Pads

Now apply the RefectoCil Silicone Pads or the RefectoCil Eye Care Pads to protect the skin against unwanted tint stains.



**3a**

## Skin Protection

Use a pea-sized amount of RefectoCil skin protection cream & eye mask. The oily formula protects the skin from unwanted staining.

## 03\_STEP BY STEP LASH TINTING



**3b**

### Skin Protection

Apply the RefectoCil Skin Protection Cream and Eye Mask to the upper eyelid.



**4**

### Base Gel

Open the Base Gel (Step1) and squeeze a pea-sized amount into a clean RefectoCil cosmetic dish.

**Application time: 2 minutes.**



**5**

### Remove

Remove Base Gel using a dry cotton swab.



**6**

### Wait!

Important: For most intense and perfect results, let the lashes dry for 4 minutes or use a brow & lash fan to speed up the drying process before the next step.

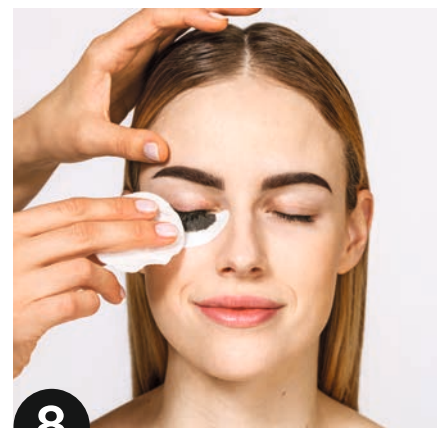


**7**

### Activator Gel

Open the Activator Gel (Step 2). Squeeze a pea-sized amount of the Activator Gel into a clean cosmetic dish and apply the Activator Gel to the lashes. Work very precisely to avoid tint stains on the skin.

**Application time: 1 minute.**



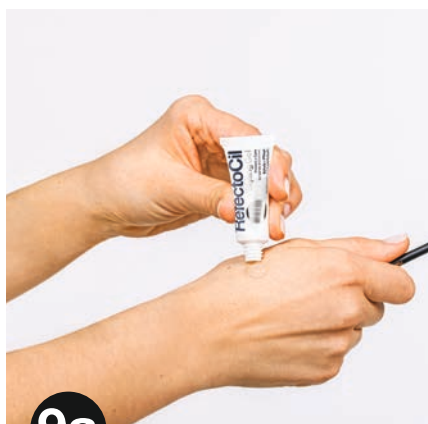
**8**

### Remove

Remove Activator Gel using a wet cotton pad and any unwanted stains using a dry cotton swab with the RefectoCil Intense Brow[n]s Tint Remover.

The further steps can be found on the next page.

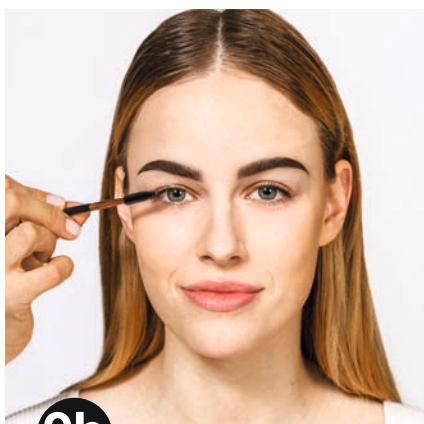
## 03\_STEP BY STEP LASH TINTING



**9a**

### Care

Apply the RefectoCil Styling Gel to nourish the lashes and provide shine.



**9b**

### Care

Info - In the salon:  
For hygienic reasons it is important not to use the same brush on all customers.

Remove the Styling Gel from the tube with a clean RefectoCil brush and apply it with the rubber spoolie.

### The effect:

Accentuated lashes, the frame for the eye!





## SALON TOOLS

In the following chapter you will find cheat sheets for the three Brow Intensifying by RefectoCil™ services and frequently asked questions that will help you establish this new product range in your salon. In addition to that we included useful aftercare cards for your customers. You can copy them as required to ensure ideal customer support.



# CHEAT SHEET - BROW INTENSIFYING

## Full Brow Technique

RefectoCil  
Intense Brow[n]s™

4 min

2 min

1 min

PREPARE

PRIMER

BASE GEL

ACTIVATOR GEL

STYLE



DRY!

DRY!

# CHEAT SHEET - BROW INTENSIFYING

## Ombre Shading Technique

REPEAT FULL BROW STEPS. APPLY ACTIVATOR GEL WITH RUBBER SPOOLIE AT THE FRONT PART.



## Brow Filling Technique

REPEAT FULL BROW STEPS. DO NOT TINT THE FRONT PART OR ANY OTHER PART OF THE BROW THAT DOESN'T NEED TO BE INTENSIFIED.



**RefectoCil**  
Intense Brow[n]s™



# CHEAT SHEET - BROW INTENSIFYING

## Lash Tinting

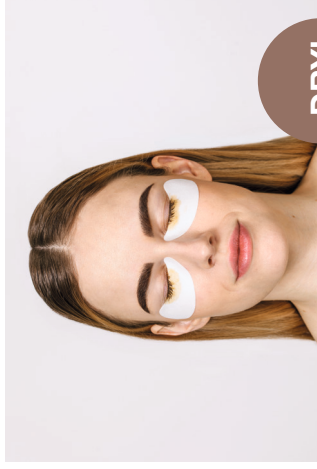
**RefectoCil**  
Intense Brow[n]s™

PREPARE



2 min

BASE GEL



DRY!

1 min

ACTIVATOR GEL



# FAQS

**RefectoCil**  
Intense Brow[n]s™

## **How does the result differ from oxidative tints to Intense Brow[n]s?**

Oxidative colors tint the hair. The effect lasts up to 6 weeks. Intense Brow[n]s tints hair and skin! There is an intense make-up effect on the skin, which lasts up to 10 days. The coloring of the hairs lasts up to 6 weeks.

## **How does the chemical process of oxidative color differ from Intense Brow[n]s?**

Information on the chemical process, see chapter „The Effect“.

## **Is Intense Brow[n]s suitable for every customer?**

No. We now have 2 different tinting systems in our portfolio. With the right consultation the stylist finds out what is best for each customer. Join our masterclasses for more information.

## **Which customers do mostly benefit from Intense Brow[n]s?**

Customers that want a more intense emphasis of the eyebrows. Also, clients that wear brow make-up on a regular basis will benefit from this service. Perfect also for blondes who like the Contrast Brow effect and to correct, replenish or optimize eyebrows.

## **The result is unevenly stained, what can I do?**

1. Dry well between steps
2. Be careful that no oily products touch the brows
3. Exfoliate in advance and cleanse really well: the skin should be smooth, fat-free and dry
4. You can repeat or correct the process: just use Base Gel (2min) and Activator (1 min) again
5. Always take fresh Activator gel from the cosmetic dish: do not apply the product in one place and blur, but always use some fresh Activator on the brush.

## **The result is too dark or unclear, what can I do?**

1. A lot can be removed with the Tint Remover, directly afterwards
2. Put some Tint Remover on a cotton swab to correct the shape or effect

## **Why are the drying times between steps so important?**

The hair and skin must be completely dry so that the active ingredients can penetrate and be absorbed well. To shorten the waiting time, we recommend using a lash & brow fan.

## **Why is it recommended to exfoliate the skin in advance?**

So that the skin is smooth and even. Otherwise, the pigments can collect on dry skin areas and the result can become patchy.

## **What is the difference to henna?**

Henna are pure plant extracts that are mixed with water and then remain on the skin for up to 25 minutes. The pure plant extracts can cause allergic reactions, especially in people who have allergies to grasses.

## **Does the color become more intense with a longer exposure time?**

No. The Activator Gel is ready after 60 seconds. By leaving it on for a longer period, the result does not become darker.

## **What happens if the products were left on the skin & hair longer than indicated?**

The result remains the same. Prolonged exposure cannot achieve a more intense result.

## **Is it possible to laminate/lift the eyebrows before tinting with Intense Brow[n]s?**

Yes, it is. Please clean the brows thoroughly, there must be no residues of Perm/Neutralizer on the hair or skin.

## **Can you bleach first with Blonde Brow and then dye with Intense Brow[n]s?**

No, this is not recommended.

## **Can the Intense Brow[n]s Base Gels be mixed?**

Only the Base Gels can be mixed to create even more shades. Attention: The Activator Gel is still only applied in the 2nd step and is not mixed with the Base Gels.

## **How often can the service be repeated?**

RefectoCil tinting is gentle and can therefore be repeated at any time. Ideally, as soon as the effect has worn off.

## **Can I use Intense Brow[n]s if the client has had an allergic reaction to oxidative tints?**

Yes, because Intense Brow[n]s consists of different ingredients. Nevertheless, we recommend an allergy test before application.

## **How safe is the treatment?**

The treatment is absolutely safe! All products are developed under the strictest guidelines especially for the eye area and are very well tolerated. If color gets into the client's eye, the eye must be cleaned with an eye wash.

## **What should be observed after the treatment?**

See Chapter "Sep by Step", Aftercare Card.

## **Do the brows & lashes need special care after the treatment?**

After the treatment, the RefectoCil Styling Gel provides the perfect care and nourishes the hair.

## **Why should the eyebrows not be tinted after using self-tanning agents?**

We do not recommend this, as a yellowish discoloration of the skin may result.

## **Can Intense Brow[n]s be used on pregnant women?**

Generally, we do not see any problems using tints while being pregnant. We have no information about any negative effects after using the tints during pregnancy, but please note that we did not conduct any special studies with pregnant women. Further, as a manufacturing company we don't have the necessary medical knowledge and we therefore can't give any medical advice.

## **Are RefectoCil Intense Brow[n]s products vegan?**

Yes, the products are vegan, i.e. they do not contain any raw materials of animal origin.

## **Are RefectoCil products tested on animals?**

No. All our products are developed and tested without animal testing in accordance with the regulations of the EU cosmetics directive.

## **Where are RefectoCil products manufactured and developed?**

The products are manufactured in Austria

## Brow Intensifying by **RefectoCil™**

## Aftercare Cards

### The first 24 hours



No oily products



No water, do not go swimming, avoid hot baths/sauna



Do not use eye cream



Keep eyebrows dry



Do not touch eyebrows

### After the first 24 hours



For a long skin staining effect, treat the eyebrow area gently. Do not use oily creams or peeling products as far as possible.



Styling gel daily as a care of the hairs is possible

## Brow Intensifying by **RefectoCil™**

### The first 24 hours



No oily products



No water, do not go swimming, avoid hot baths/sauna



Do not use eye cream



Keep eyebrows dry



Do not touch eyebrows

### After the first 24 hours



For a long skin staining effect, treat the eyebrow area gently. Do not use oily creams or peeling products as far as possible.



Styling gel daily as a care of the hairs is possible

## Brow Intensifying by **RefectoCil™**

## Aftercare Cards

### The first 24 hours



No oily products



No water, do not go swimming, avoid hot baths/sauna



Do not use eye cream



Keep eyebrows dry



Do not touch eyebrows

### After the first 24 hours



For a long skin staining effect, treat the eyebrow area gently. Do not use oily creams or peeling products as far as possible.



Styling gel daily as a care of the hairs is possible

## Brow Intensifying by **RefectoCil™**

### The first 24 hours



No oily products



No water, do not go swimming, avoid hot baths/sauna



Do not use eye cream



Keep eyebrows dry



Do not touch eyebrows

### After the first 24 hours



For a long skin staining effect, treat the eyebrow area gently. Do not use oily creams or peeling products as far as possible.



Styling gel daily as a care of the hairs is possible



**More information on RefectoCil:**

[www.gwcosmetics.at](http://www.gwcosmetics.at)

[www.refectocil-us.com](http://www.refectocil-us.com)

[instagram./refectocilnorthamerica](https://www.instagram.com/refectocilnorthamerica)

[facebook/RefectoCil Northamerica](https://www.facebook.com/RefectoCil%20Northamerica)

[YouTube Channel international/RefectoCil](https://www.youtube.com/channel/UC...)

[YouTube Channel USA/CBON CHANNEL](https://www.youtube.com/channel/UC...)