

## Technical Bulletin

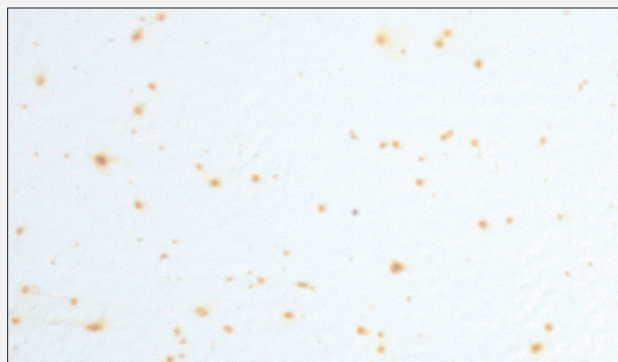
### Rust Filings on Steel Panel Skins

Structall's Steel Snap-N-Lock™ Panel skins are cut using a shear press. This method results in a clean cut without generating metal chips that can cause rust blemishes on the panel paint finish.

Drilling, cutting, and grinding a steel panel at the jobsite will produce metal filings that will magnetically adhere to the skin of the panel. If these shavings are not removed from the fascia of the panel, the small bits of metal will corrode and blemish the finish. The result is only cosmetic and will not affect the longevity of the panel. However, to avoid the inevitable blemishes to the paint finish caused by the rusting filings, wipe off the panel with a cloth or soft-bristled brush immediately after modifying the panel.

Wipe off all steel panels at a jobsite (including unmodified panels) before installation to remove any debris that may have blown onto the panels.

If the metal filings were not removed before installation and speckles of rust begin to show on the panels, use cleaning products such as Spic and Span® or Soft Scrub® along with a nylon scrubbing pad and water to clean off the rust filings. The paint finish will likely be stained by the rust but the cleaning will have removed the source of the discoloration.



[info@structall.com](mailto:info@structall.com) • [www.STRUCTALL.com](http://www.STRUCTALL.com)

**Corporate  
Headquarters**

350 Burbank Road  
Oldsmar, FL 34677  
Sales Desk: 877-314-2509  
Information: 800-969-3706  
Local: 813-855-2627  
Fax: 813-814-0018

**Lakeland, FL  
Service Center**

5120 Great Oak Drive  
Lakeland, FL 33815  
Toll Free: 855-431-2642  
Local: 863-577-0600  
Fax: 863-577-0659

**Gulf Coast  
Service Center**

5045 Iberville St., Unit B  
St. Gabriel, LA 70776  
Toll Free: 800-310-1405  
Local: 225-673-8776  
Fax: 225-677-8133

**San Antonio, TX  
Service Center**

3802 Binz Engleman, Ste A105  
San Antonio, TX 78219  
Toll Free: 800-880-4198  
Local: 210-225-7997  
Fax: 210-225-7197