

## Manual Instruction



## Installation:



Step 1:



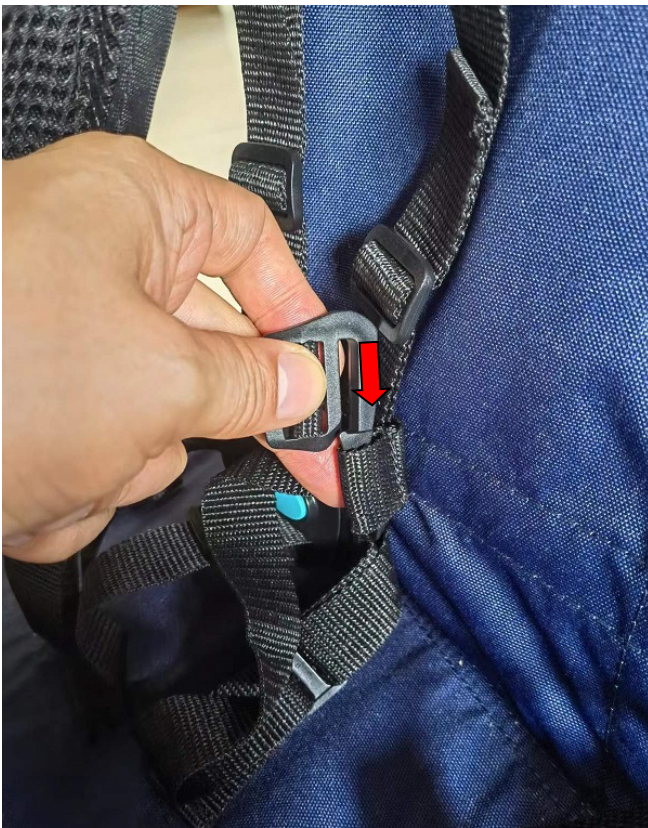
Step 2:



Step 3



Step 4



Step 5



Step 6  
Tighten the strap on both side.

# Disassembly



After the hammock is fully tightened and secured, make sure the two each upper and lower buckles are at same Level. **Step 1**



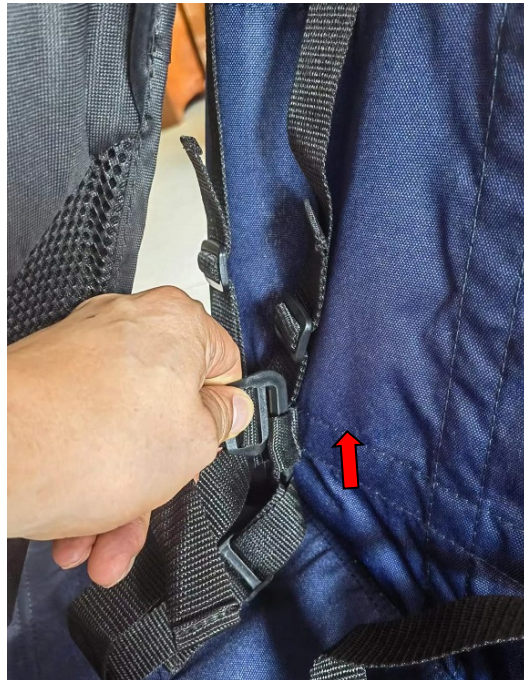
Step 2



Step 3



Step 4



Step 5

## WARNING:

1. Only use this product with children who can not sit unaided between the age 1-10months old ,who weight less than 22lb /10kg,and are shorter than 29.5inch/75cm.
2. Only use the hammock for strolling.
3. Avoid serious injury from child failing or sliding out ,always use seat belt.
4. Ensure the hammock is properly attached to the child carrier's frame and seat , Failure to properly attach The hammockto the carrier could result in serious injury or death to the occupant(s) in the event of an accident .Refer to the hommock owner's manual for proper hammock attachment.
5. Ensure the hammock harness is snug over your baby's shoulders and that crotch strap is between the baby's legs.Failure to properly attach seatbelts could result in serious injury or death to the occupant(s) in the event of an accident.Refer to the hammock owner's manual for proper seat-belts use.
6. Never leave children unattached in the carrier.
7. Dot not use the hammock for cycling (i.e. in a bike trailer).Using the hammock in a bike trailer could result In serious injury or death to the occupant(s) in the event of an accident.