



friendly loom™

by Harrisville Designs

Potholder Design Ideas



Introduction

There's probably someone you know who made potholders when they were a child. It's one of those classic fun and easy hobbies that is still popular and useful today for people of all ages! Our custom metal looms and cotton loops are 100% high quality American made. Make colorful potholders for your home, as gifts or to sell at a fundraiser for your school, church, or club. Not only do we have bags of solid colored loops (in 34 beautiful colors) available in the Traditional size, (for the 7" x 7" loom) they are also available in our large, PRO size (10" x 10" loom). Each small bag makes 2 potholders. And don't forget our bags of Lotta Loops. Each bag makes 8 potholders and they are available in Bright, Pastel, and Designer color lines and in both sizes - Traditional and PRO!

Potholder Wizard - Design Program

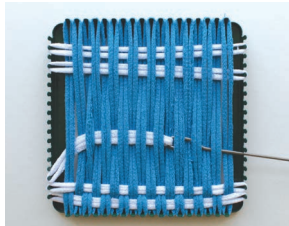
The Designs in this booklet were created using our Potholder Wizard 2.0!

It's FREE! To try it out go to our website: friendlyloom.com and search for the Potholder Wizard. Put your creativity to work. You won't believe how much fun it is to use this program . . . and it's really easy! You can use the designs that are in the program or make up your own "random" designs. So give it a try and let us know what you think.

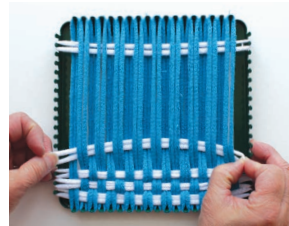
TIPS & TRICKS FOR FASTER WEAVING



1. Start your potholder, by weaving the first couple rows. Next put two loops on the hook and weave together across the row.



2. Store at the top of the loom. Weave in your third loop from the bottom.



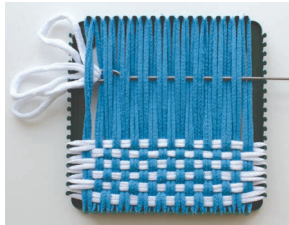
3. Pull down your stored loop from the top.



4. Weave in your fifth loop from the bottom.



5. Pull down the stored loop from the top, continue steps 1 - 5 to finish your potholder.



6. For even faster weaving, pull through three loops and leave them at the top.

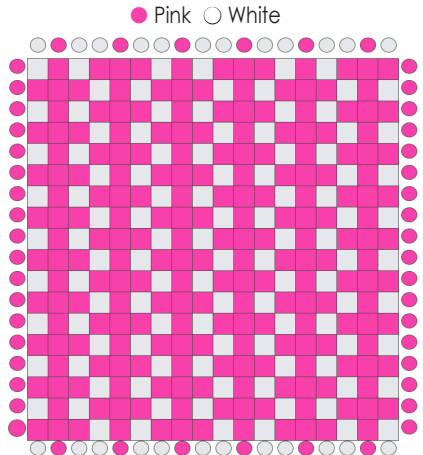
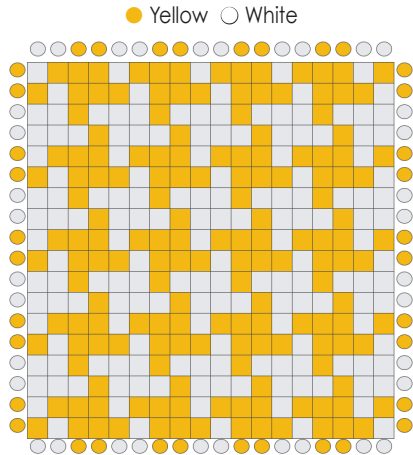
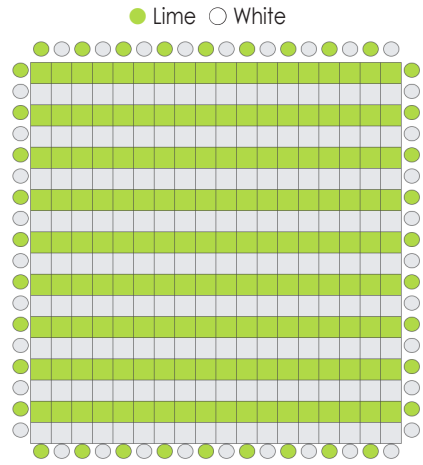
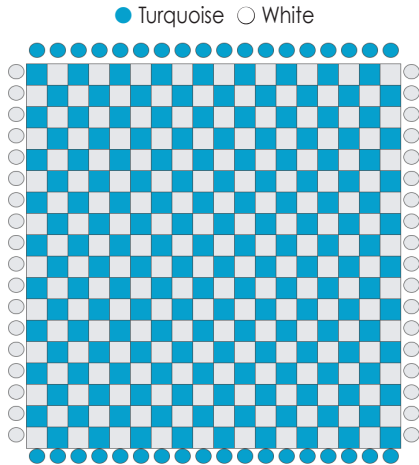


7. Weave in the loop across the bottom.

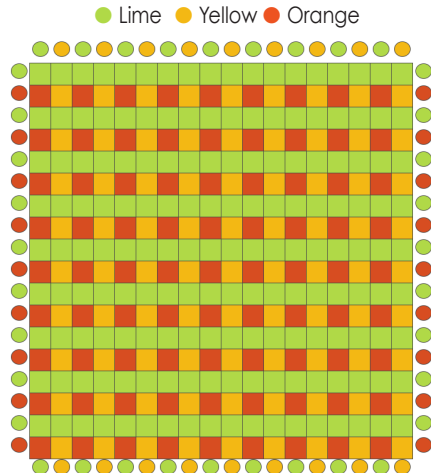
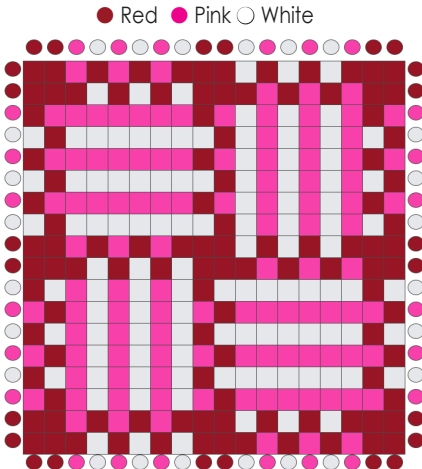
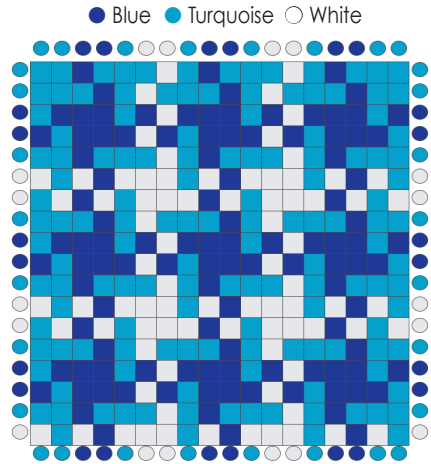
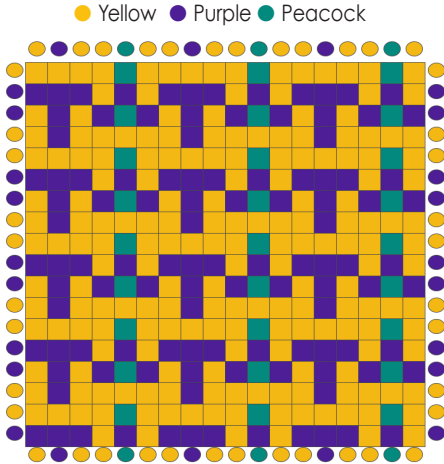


8. Bring down the next loop from the top. Continue until potholder is complete.

— Traditional Size: 2 Color Design —

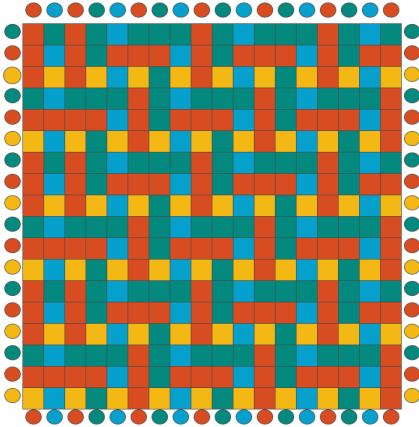


— Traditional Size: 3 Color Design —

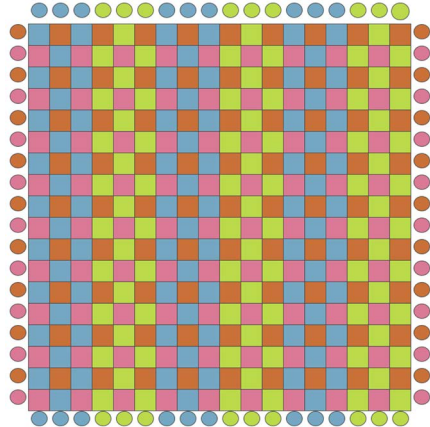


— Traditional Size: 4 Color Design —

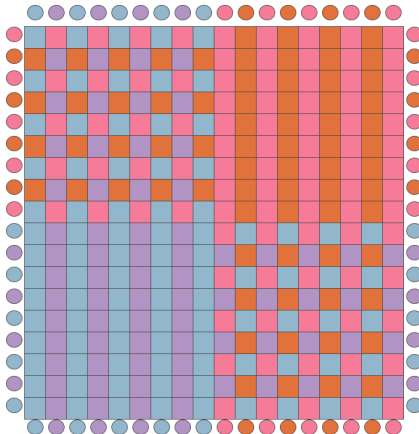
● Orange ● Turquoise
● Peacock ● Yellow



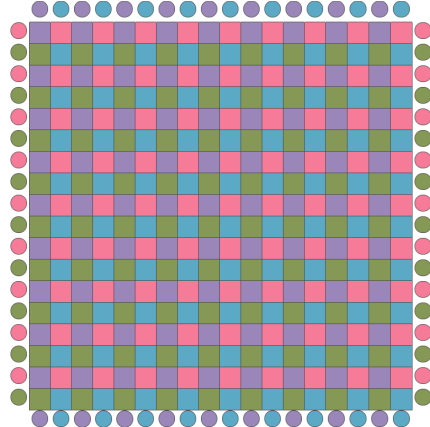
● Lime ● Robin's Egg
● Tiger Lily ● Carnation



● Carnation ● Tiger Lily
● Powder Blue ● Lavender

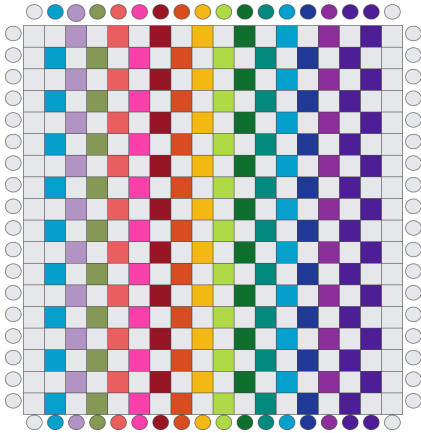


● Leaf ● Carnation
● Lavender ● Robin's Egg

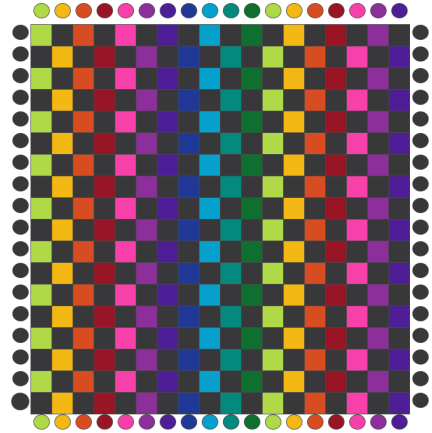


— Traditional Size: Multi-Color Design —

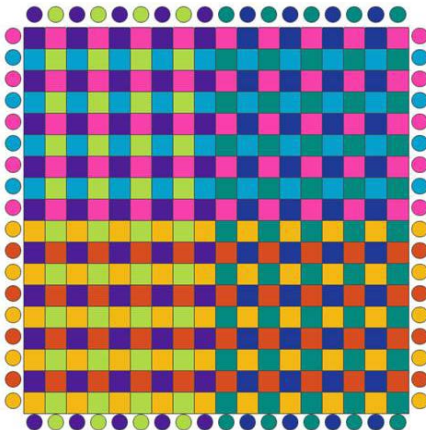
- Turquoise Lavender Leaf Salmon
- Pink Red Orange Yellow Lime White
- Green Peacock Blue Plum Purple



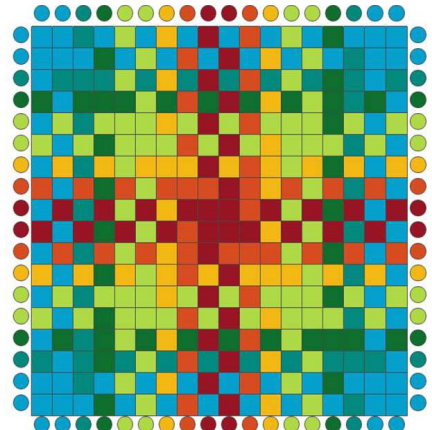
- Lime Yellow Orange Red
- Pink Plum Purple Blue Turquoise
- Peacock Green Black



- Purple Lime Peacock Blue
- Pink Turquoise Yellow Orange

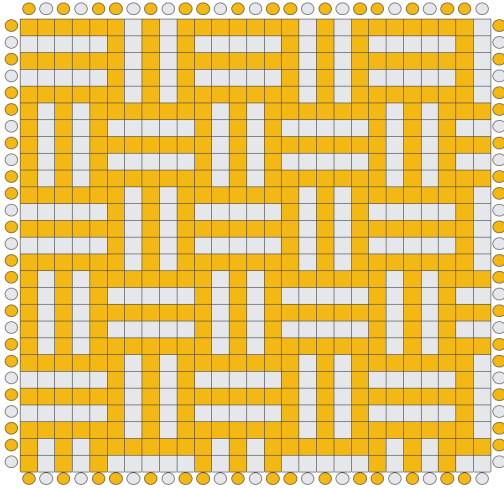


- Turquoise Peacock Green
- Lime Yellow Orange Red

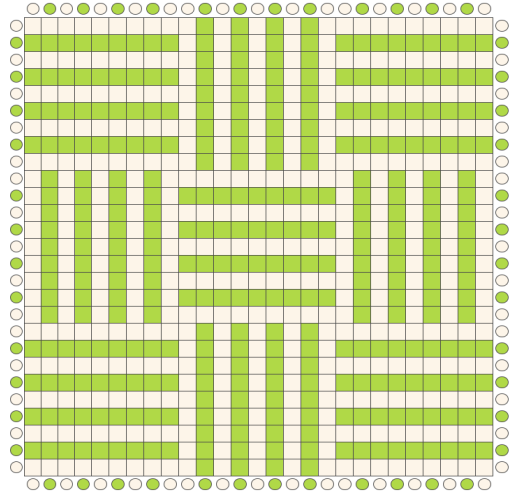


PRO Size: 2 Color Design

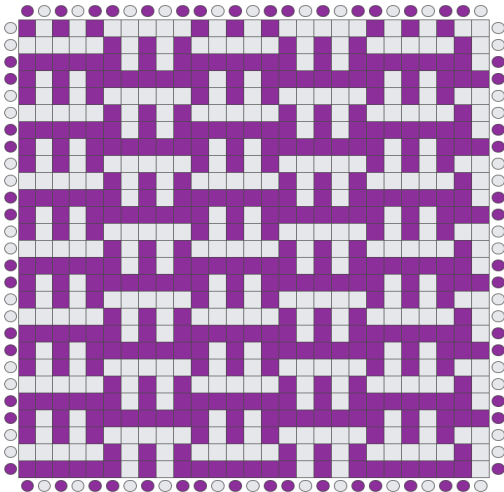
● Yellow ○ White



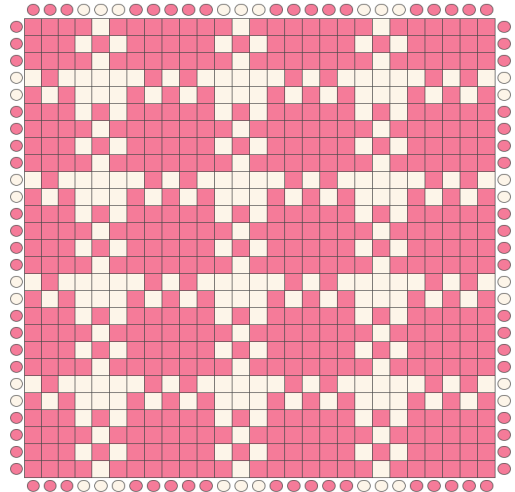
● Lime ○ White



● Plum ○ White

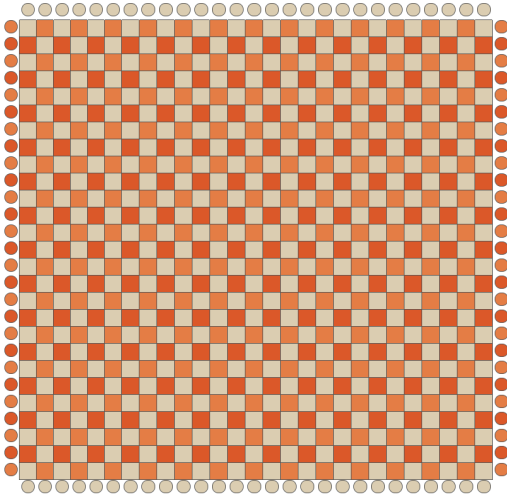


● Carnation ○ White

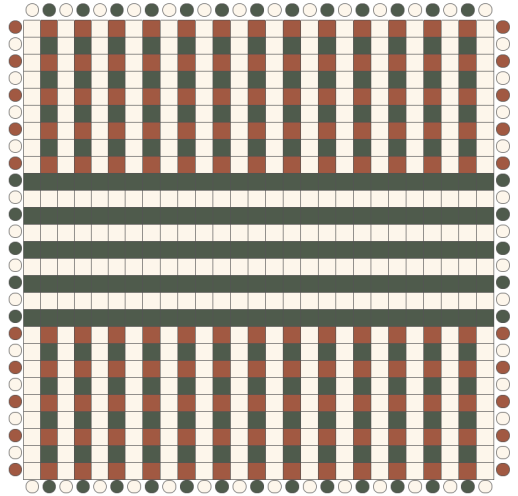


PRO Size: 3 Color Design

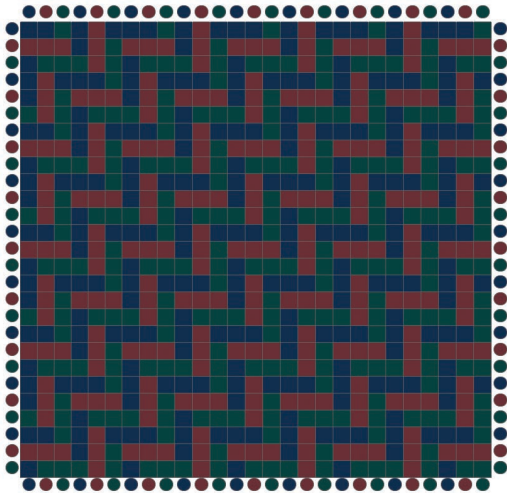
● Flax ● Tiger Lily ● Orange



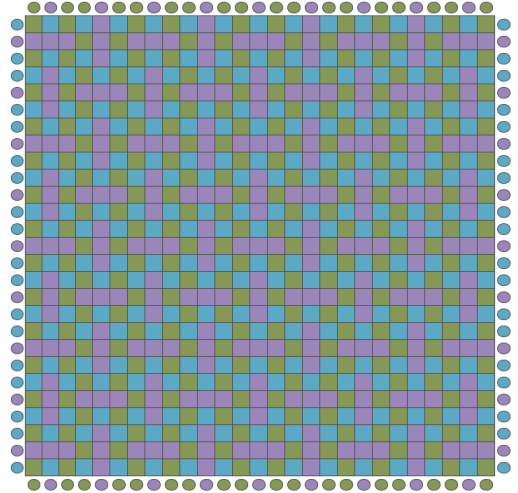
● Spice ● Willow ● Winter White



● Dark Navy ● Burgundy ● Pine

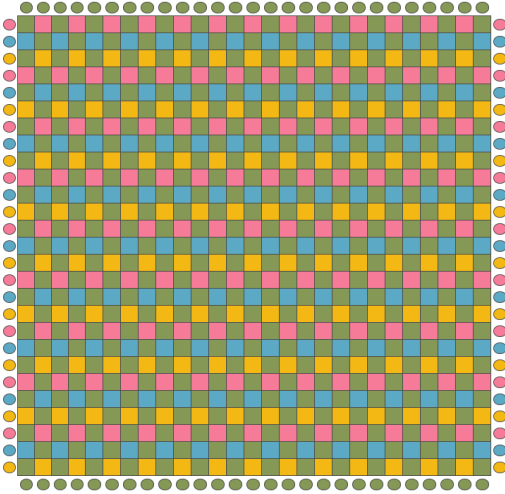


● Leaf ● Lavender ● Robin's Egg

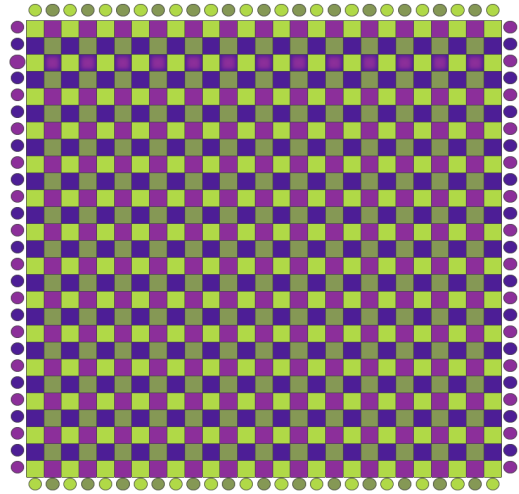


PRO Size: 4 Color Design

● Leaf ● Pink ● Robin's Egg ● Yellow

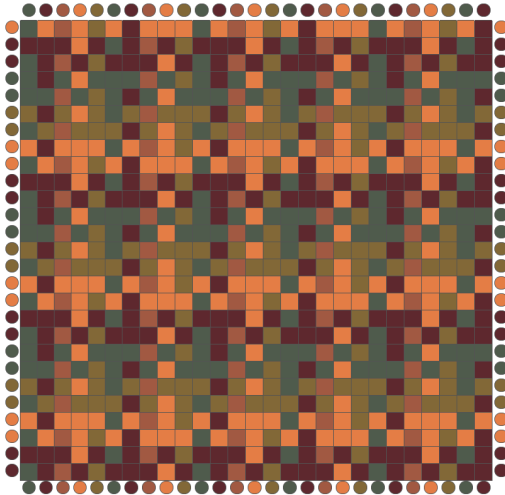


● Lime ● Leaf ● Plum ● Purple

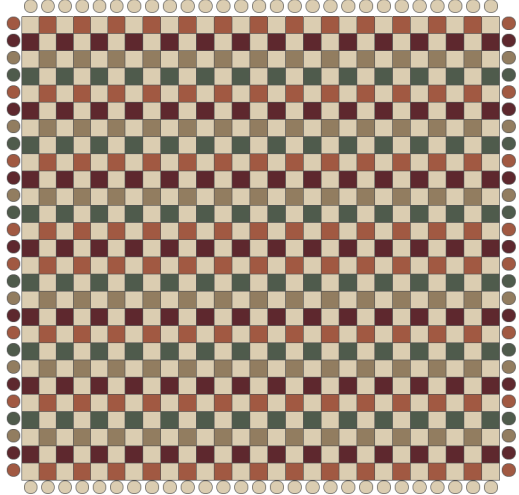


PRO Size: 5 Color Design

● Burgundy ● Willow ● Ochre ● Tiger Lily ● Spice

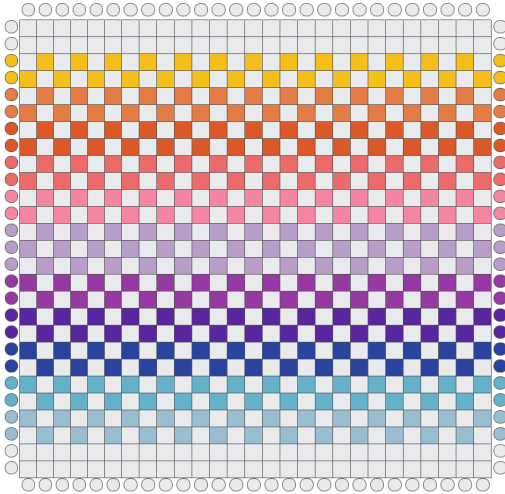


● Spice ● Burgundy ● Autumn ● Willow ● Flax

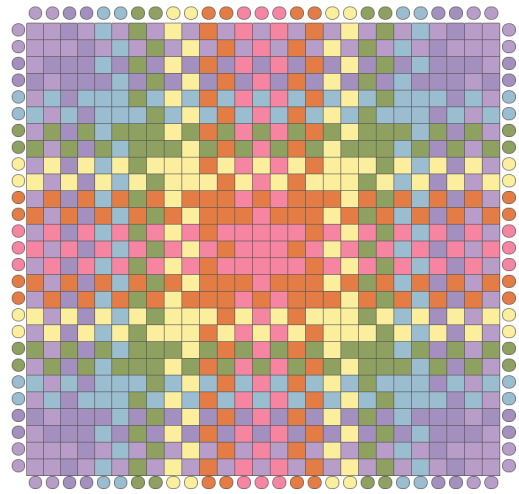


PRO Size: Multi-Color Design

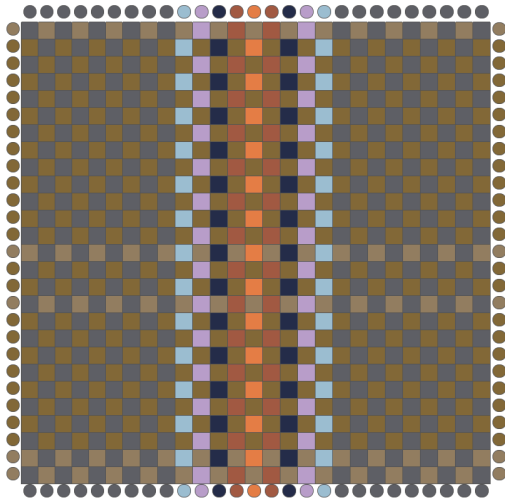
- White ● Yellow ● Tiger Lily ● Orange ● Salmon
- Carnation ● Lavender ● Plum ● Purple
- Blue ● Robin's Egg ● Powder Blue



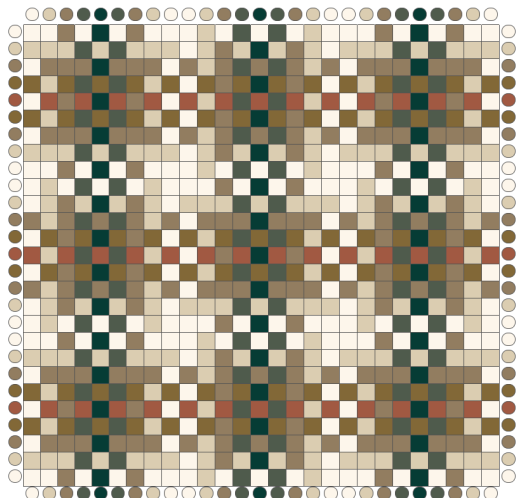
- Lavender ● Hydrangea ● Powder Blue
- Leaf ● Daffodil ● Tiger Lily ● Carnation



- Powder Blue ● Lavender ● Dark Navy
- Spice ● Tiger Lily ● Pewter ● Ochre ● Autumn



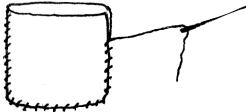
- Winter White ● Flax ● Autumn
- Ochre ● Spice ● Pine ● Willow



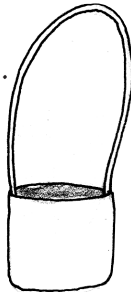
More Potholder Ideas

Making a Purse

You will need 2 potholders.



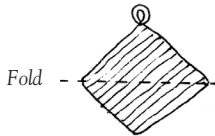
Sew 2 potholders together along 3 sides, leaving the top open.



Sew on a strap.

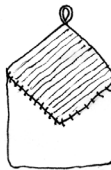


If you want a top flap...



Fold

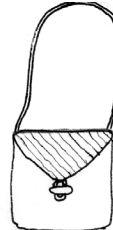
Add a third potholder.



Sew it to the back.



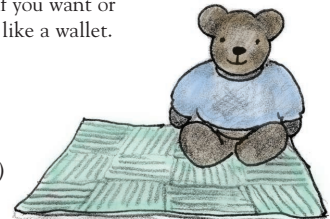
Sew a button on the front.



Add a shoulder strap if you want or use it like a wallet.



Think about sewing some pieces together to make a placemat (use 6), or a mat to set hot dishes on (use 4), or even a small rug (using 12 works well) for beside your bed!



Congratulations! We know you did a great job!

NEED MORE LOOPS?

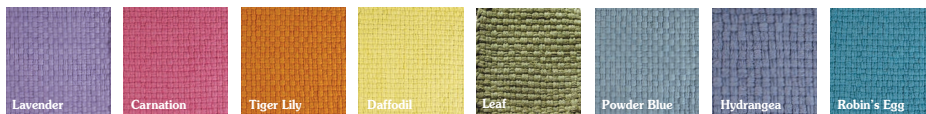
Go to your local store or visit us at: friendlyloom.com

SMALL BAGS OF SOLID COLORED LOOPS = 2 Potholders

Bright Color Line:



Pastel Color Line:



Designer Color Line:

Available in
Traditional Size
7" x 7" Loom
or
PRO Size
10" x 10" Loom



Bags of solid colors with enough loops to make 2 potholders!

TRY OUR MULTI-COLORED BAGS

Lotta Loops in Traditional & PRO Sizes



F558B

F558D

F558P

F558BW

Each bag makes 8 potholders in assorted color lines.

5 lb. Bags in Traditional & PRO Sizes



Traditional bags make: 50 potholders
PRO bags make: 25 potholders