

## Chemical Content Analysis

Client: **Naturecan**  
 Product: **Lemon & Ginger Hemp Tea**  
 Weight: **2g**  
 Batch No.: **LGHT3001**  
 Lab ID: **CBD0355**  
 Date: **31.01.2023**  
 Analysis by: **Lawrence Theobald**

## Method Summary:

0.3g of sample was measured on a balance and extracted with methanol to give a sample at 60 mg/ml. This was diluted further in Methanol.

The sample was analysed on an Agilent HPLC with a DAD detector. The system was calibrated using standard solutions of eleven Cannabinoids. Cannabinoid concentrations in the sample were determined using the relevant calibration lines.

The results are presented in Table 1 and Figure 1 below.

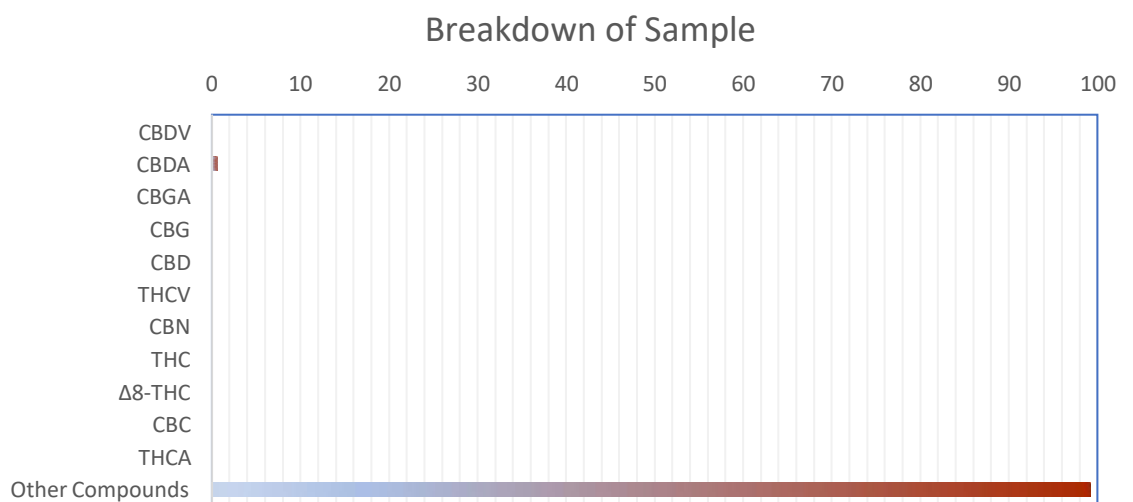
**PASSED**

## Results

Cannabinoid Compound (Abbreviation)	CAS Number	LoQ (µg/mL)	Target Concentration	Measured Concentration	PASS/FAIL
Cannabidivarin (CBDV)	24274-48-4	0.1	No Target	0.07	N/A
Cannabidiolic Acid (CBDA)	1244-58-2	0.1	No Target	12.87	N/A
Cannabigerolic Acid (CBGA)	25555-57-1	0.1	No Target	0.70	N/A
Cannabigerol (CBG)	25654-31-3	0.1	No Target	0.08	N/A
Cannabidiol (CBD)	13956-29-1	0.1	No Target	0.93	N/A
Tetrahydrocannabivarin (THCV)	1972-08-3	0.1	Legal Limit	BQL	PASS
Cannabinol (CBN)	521-35-7	0.1	Legal Limit	BQL	PASS
Δ9-Tetrahydrocannabinol (THC)	1972-08-3	0.1	Legal Limit	BQL	PASS
Δ8-Tetrahydrocannabinol (Δ8-THC)	5957-75-5	0.1	Legal Limit	BQL	PASS
Cannabichromene (CBC)	20675-51-8	0.2	No Target	BQL	N/A
Δ9-Tetrahydrocannabinolic Acid (THCA)	23978-85-0	0.2	Legal Limit	BQL	PASS

**Table 1-** Results. LOQ- Limit of Quantitation. BQL- Below Quantitation Limit

**Figure 1-** Proportion of sample breakdown



## Comments

**Acceptance Criteria-** All prohibited Cannabinoids below legal limits

**Limits-** CBN- 1mg per container

Δ8-THC- 1mg per container

THCV- 1mg per container

THC and THCA- 1mg per container combined

**Summary-** All prohibited Cannabinoids are below legal limits