



**ACUTUS
LABORATORIES**

Certificate of Analysis

Issued to:

ISSUED TO: NatureCan, Bank Chambers, Stockport, SK1 1AR

Sample details

DATE RECEIVED	18-Mar-22	PRODUCT NO.	N/A
SAMPLE TYPE/DESCRIPTION	Naturecan CBD Infused Chocolate Brownie - 25 mg / 60g	BATCH NO	211021
ACUTUS SAMPLE NO.	S06432	DATE TESTED STARTED	21-Mar-22
PERFORMED BY	Shireen Everitt	DATE TESTING COMPLETE	21-Mar-22

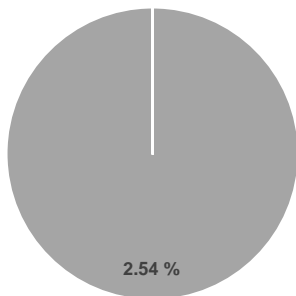
Certificate no: COA-CBD-702 V 1.0

All analyses were performed using the High-Performance Liquid Chromatographic (HPLC) method SOP/LAB/0039 V3.0 and quantification of Cannabinoids carried out using a certified reference standard. Note: This method is not an ISO standard test method.

Cannabinoid profile

CANNABINOID PROFILE

- CBD-A
- CBG
- CBD
- THC-V
- CBN
- Δ9-THC
- Δ8-THC
- THC-A



Compound	Result (%)	Result (mg/brownie)
Cannabidiolic acid (CBD-A)	N.D.	N.D.
Cannabigerol (CBG)	0.00	0.60
Cannabidiol (CBD)	2.54	22.87
Tetrahydrocannabivarin (THC-V)	N.D.	N.D.
Cannabinol (CBN)	N.D.	N.D.
Delta-9-Tetrahydrocannabinol (Δ9-THC)	N.D.	N.D.
Delta-8-Tetrahydrocannabinol (Δ8-THC)	N.D.	N.D.
Tetrahydrocannabinolic acid (THC-A)	N.D.	N.D.
Total Cannabinoids	2.54%	23.47 mg/brownie
Total Potential THC ^{**}	0.00%	0 mg/brownie
Total Potential CBD ^{**}	2.54%	22.87 mg/brownie

LOQ = 0.2 µg/ml

N.D. = Not Detected

% = % (w/w) = Percent (Weight of Analyte / Weight of Product)

* Total Cannabinoids result reflects the absolute sum of all cannabinoids detected

** Total Potential THC/CBD is calculated using the following formulas to take into account the loss of carbonyl group during decarboxylation step

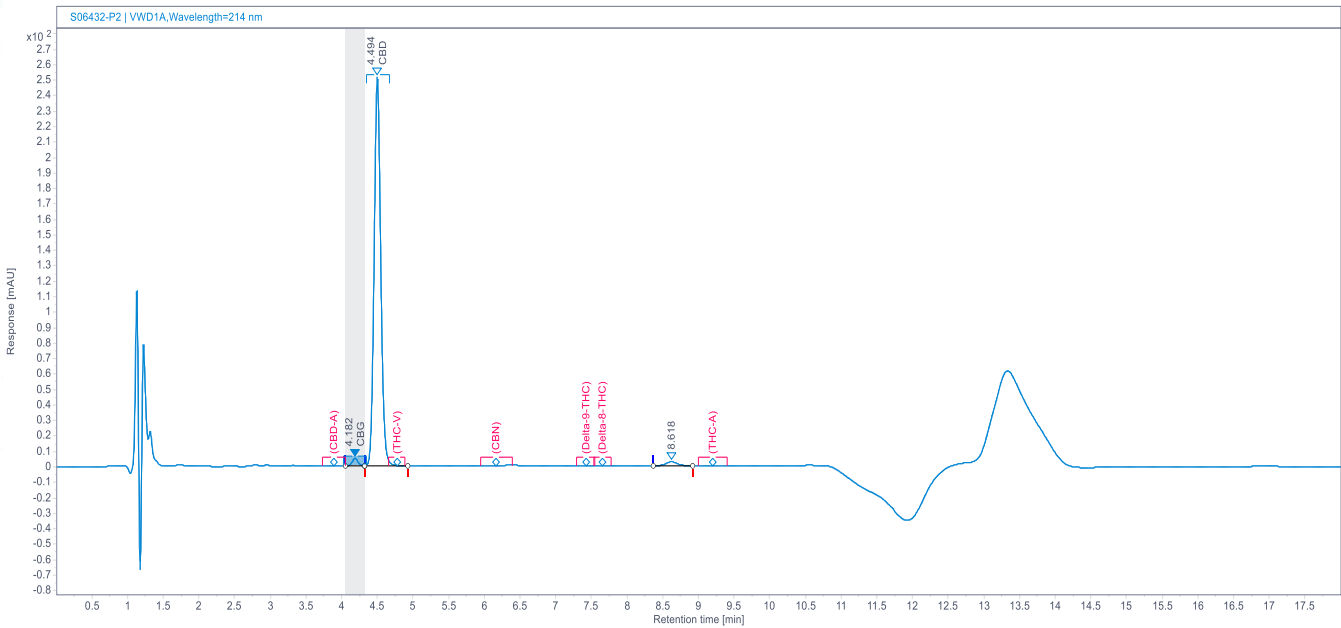
Total THC = Δ9-THC + (THC-A * (0.877)) and Total CBD = CBD + (CBD-A * (0.877))



**ACUTUS
LABORATORIES**

Certificate of Analysis

HPLC Chromatogram



Additional Notes

Sampling is excluded and is the responsibility of the supplier.

*All results reported in this certificate only relate to the sample and batch tested.

Method and measurement uncertainty available upon request.

AUTHORISED BY:

Ryan Morrow

SIGNATURE:

X

DATE:

28-Mar-22

Signed by: S-1-12-1-315006314-1134601384-3595892871-1838775116/4431998a-bdc4-41f0-9ff4-35e72e3e35e4

Contact: Acutus Laboratories: Unit G3, Inspire Business Park, Carrowreagh Road, Dundonald,
BT161QT, UK

Email: info@acutuslabs.co.uk

Tel: +44 (0) 2895622010