



**ACUTUS**  
**LABORATORIES**

# Certificate of Analysis

Issued to:

**ISSUED TO: NatureCan, Bank Chambers, Stockport, SK1 1AR**

## Sample details

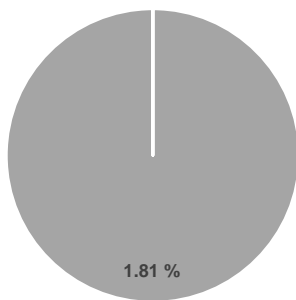
DATE RECEIVED	18-Mar-22	PRODUCT NO.	N/A
SAMPLE TYPE/DESCRIPTION	Naturecan CBD Infused Chocolate Orange Cookie - 25 mg / 60g	BATCH NO	201021
ACUTUS SAMPLE NO.	S06433	DATE TESTED STARTED	21-Mar-22
PERFORMED BY	Shireen Everitt	DATE TESTING COMPLETE	21-Mar-22

## Certificate no: COA-CBD-701 V 1.0

All analyses were performed using the High-Performance Liquid Chromatographic (HPLC) method SOP/LAB/0039 V3.0 and quantification of Cannabinoids carried out using a certified reference standard. Note: This method is not an ISO standard test method.

## Cannabinoid profile

- CBD-A
- CBG
- CBD
- THC-V
- CBN
- Δ9-THC
- Δ8-THC
- THC-A



Compound	Result (%)	Result (mg/cookie)
Cannabidiolic acid (CBD-A)	N.D.	N.D.
Cannabigerol (CBG)	N.D.	N.D.
Cannabidiol (CBD)	1.81	18.80
Tetrahydrocannabivarin (THC-V)	0.00	0.61
Cannabinol (CBN)	N.D.	N.D.
Delta-9-Tetrahydrocannabinol (Δ9-THC)	N.D.	N.D.
Delta-8-Tetrahydrocannabinol (Δ8-THC)	N.D.	N.D.
Tetrahydrocannabinolic acid (THC-A)	N.D.	N.D.
<b>Total Cannabinoids</b>	<b>1.81%</b>	<b>19.41 mg/g</b>
Total Potential THC*	0.00%	0 mg/g
Total Potential CBD**	1.81%	18.8 mg/g

LOQ = 0.2 µg/ml

N.D. = Not Detected

% = % (w/w) = Percent (Weight of Analyte / Weight of Product)

\* Total Cannabinoids result reflects the absolute sum of all cannabinoids detected

\*\* Total Potential THC/CBD is calculated using the following formulas to take into account the loss of carbonyl group during decarboxylation step

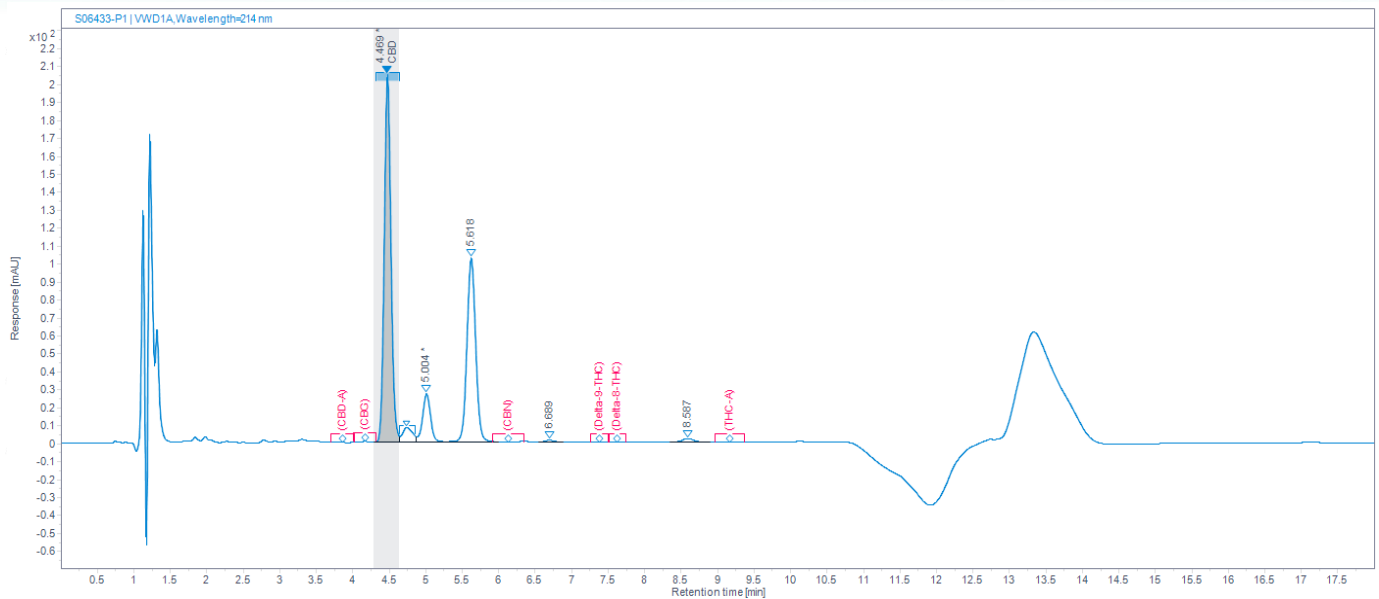
Total THC = Δ9-THC + (THC-A \* (0.877)) and Total CBD = CBD + (CBD-A \* (0.877))



**ACUTUS  
LABORATORIES**

# Certificate of Analysis

## HPLC Chromatogram



## Additional Notes

Sampling is excluded and is the responsibility of the supplier.

\*All results reported in this certificate only relate to the sample and batch tested.

Method and measurement uncertainty available upon request.

AUTHORISED BY:

Ryan Morrow

SIGNATURE:

X

DATE:

28-Mar-22

Signed by: S-1-12-1-315006314-1134601384-3595892871-1838775116/4431998a-bdc4-41f0-9ff4-35e72e3e35e4

Contact: Acutus Laboratories: Unit G3, Inspire Business Park, Carrowreagh Road, Dundonald,  
BT161QT, UK

Email: [info@acutuslabs.co.uk](mailto:info@acutuslabs.co.uk)

Tel: +44 (0) 2895622010