

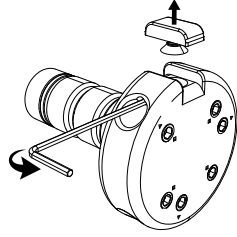


WATCH SETUP VIDEO

LOCKING PIN INSTALLATION GUIDE

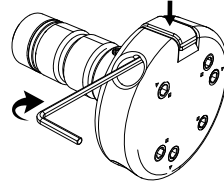
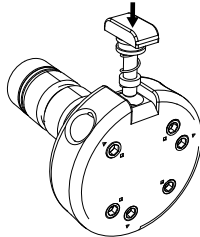
#1 Remove the Knob

Utilise the provided 1.5mm Allen key to gently loosen the M3 grub screw located within the side hole to the right of the knob. Next, pull the knob out.



#2 insert Locking pin

Insert the locking pin into the corresponding hole. Ensure that the Cambolt is completely loosened. Apply gentle pressure atop the knob using your thumb, thus allowing it to align seamlessly with the hub without any gaps. With your other hand use the Allen key to securely tighten it.



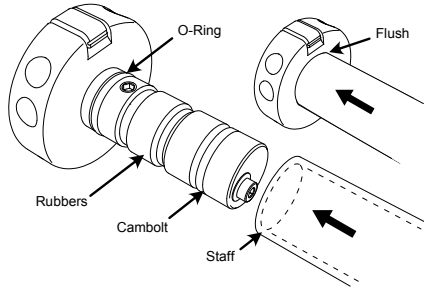
#3 Final Check

Grasp the knob and move it up and down several times to ensure can spring up & down, plus twist left and right. You are now ready to play! Prior to usage, take a moment to read the instructions provided below to gain a comprehensive understanding of how the mechanism operates. (Scan the QR code to watch the instructional video)

INSTRUCTIONS

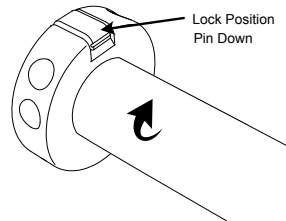
#2 Insert Hub

Ensure all rubbers are slightly loose before inserting. If they are tight or expanded, twist the cambolt counterclockwise to release it. Push it into the staff all the way past the O-ring.



#3 Tighten Hub

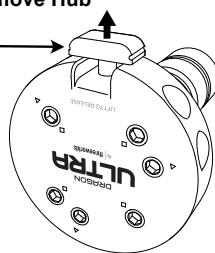
Make sure the pin is in the locking position. Once completely tightened the pin should sit down.



#4 Release / Remove Hub

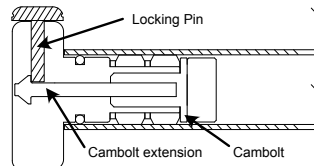
Release Position
Pin Up

Lift the Pin and twist to the release position. If hard to lift, twist the hub in the tightening direction first to release pressure on locking pin.



How It Works

On tightening, a tapered bolt is driven into the locking pin. Once completely tightened the bolt is locked behind the locking pin. Lifting the pin allows the cambolt to loosen and the hub to be removed.

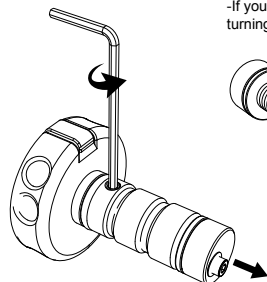


ADJUSTING CAMBOLT EXTENSION

If you find that the locking pin engages too quickly and you want a tighter fit, you can easily make adjustments to the Cambolt extension

#1 Remove Cambolt

Utilise the provided 3mm Allen key to gently loosen the M6 grub screw. Proceed to remove the Cambolt by unscrewing it completely.

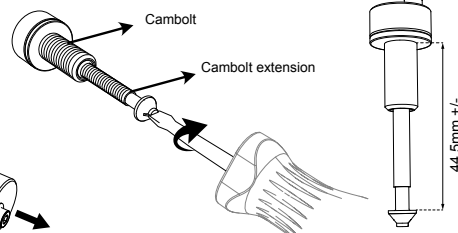


#2 Adjust cambolt extension

Hold the Cambolt firmly with one hand and use a flat-head screwdriver to adjust the Cambolt extension height.

-If your hub locks before achieving a tight fit, insert the Cambolt extension deeper by turning it clockwise half a turn at a time. Insert it back and test it. Adjust it until you feel the right fit.

-If your hub requires excessive force to lock, loosen the Cambolt extension by turning counterclockwise half a turn at a time until you achieve the right fit.



#3 Insert cambolt

Reinsert the Cambolt back into the hub, then proceed to tighten the M6 grub screw. You are now ready to go!

**44.5mm is the factory standard you can use this as a starting point*