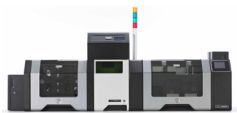


PRODUCT COMPARISON CHART

Markets

Find the right ID card printer/encoder for your market or application.



| | Industrial* | Industrial* | Financial | Professional |
|--------------------------|----------------------|---------------------|---------------------|---------------------|
| | HDP8500LE | HDP8500 | HDPii Plus | HDP5000 |
| Price | Starting at \$69,995 | Starting at \$9,995 | Starting at \$6,595 | Starting at \$3,995 |
| Vertical Markets | | | | |
| Corporate ID | | ▪ | | ▪ |
| National ID | ▪ | ▪ | | ▪ |
| Driver's Licenses | ▪ | ▪ | | ▪ |
| Government/Military | ▪ | ▪ | | ▪ |
| State & Local Government | ▪ | ▪ | | ▪ |
| Transportation | | ▪ | | ▪ |
| Health Care | | | | ▪ |
| Universities | | ▪ | | ▪ |
| Corrections | | | | |
| Sports & Leisure | | | | |
| K-12 Schools | | | | |
| Health Clubs | | | | |
| Retail & Loyalty | | | | |
| Casinos | | | | |
| Manufacturing Plants | | | | |
| Libraries | | | | |
| Not-For-Profit/NGOs | | | | |
| Events | | | | ▪ |
| Financial Institutions | ▪ | ▪ | ▪ | |

*Industrial is ideally suited for the highest-duty, continuous throughput personalization and issuance projects.

Markets

Find the right ID card printer/encoder for your market or application.



| | Professional | Professional | Professional | Professional | Value |
|--------------------------|---------------------|---------------------|---------------------|---------------------|---------------------|
| | DTC4500e | DTC4250e | DTC1250e | DTC1000Me | C50 |
| Price | Starting at \$3,199 | Starting at \$2,899 | Starting at \$2,099 | Starting at \$1,599 | Starting at \$1,799 |
| Vertical Markets | | | | | |
| Corporate ID | ▪ | ▪ | ▪ | ▪ | ▪ |
| National ID | ▪ | | | | |
| Driver's Licenses | ▪ | | | | |
| Government/Military | ▪ | | | | |
| State & Local Government | ▪ | ▪ | | | |
| Transportation | | ▪ | | | ▪ |
| Health Care | ▪ | ▪ | | | |
| Universities | ▪ | ▪ | | | |
| Corrections | | ▪ | | | |
| Sports & Leisure | | ▪ | ▪ | ▪ | ▪ |
| K-12 Schools | | ▪ | ▪ | ▪ | ▪ |
| Health Clubs | | ▪ | ▪ | ▪ | ▪ |
| Retail & Loyalty | | ▪ | ▪ | ▪ | ▪ |
| Casinos | | ▪ | ▪ | ▪ | ▪ |
| Manufacturing Plants | | ▪ | ▪ | | |
| Libraries | | ▪ | ▪ | | |
| Not-For-Profit/NGOs | | | ▪ | | |
| Events | ▪ | | | | ▪ |
| Financial Institutions | | | | | ▪ |

**Industrial is ideally suited for the highest-duty, continuous throughput personalization and issuance projects.*