



ELECTROCOMPANIET  
If music *really* matters™



## Windows 10 driver installation instructions for ECI6D/DS,

The following procedure prepares Windows 10 for the installation of Non Microsoft certified USB drivers.

**Important!**

It is important first following the procedure below. Otherwise the driver installation will fail.

We recommend downloading and saving the drivers on a USB drive first.

<http://www.electrocompaniet.no/downloads/firmware.html>

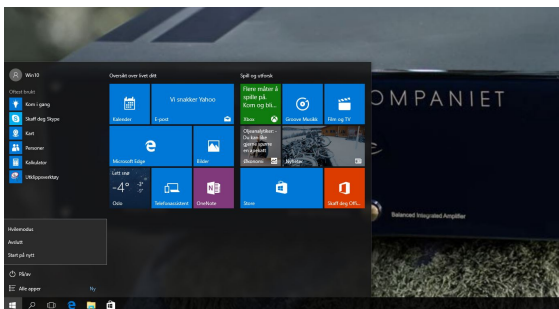
1. First we have to restart the PC in advanced start-up mode.



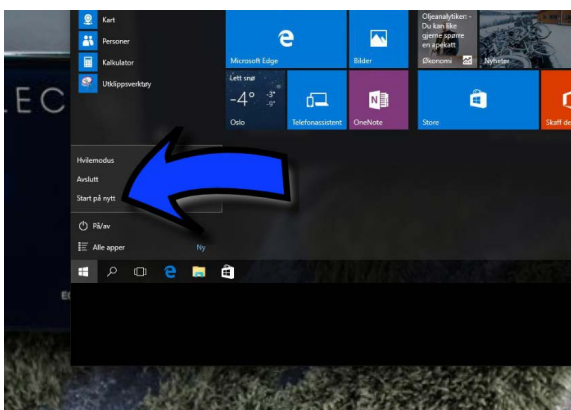
2. To get the PC into advanced start-up mode, click start meny.



3. Press and hold Shift, then click on restart Windows button while keep holding Shift down.

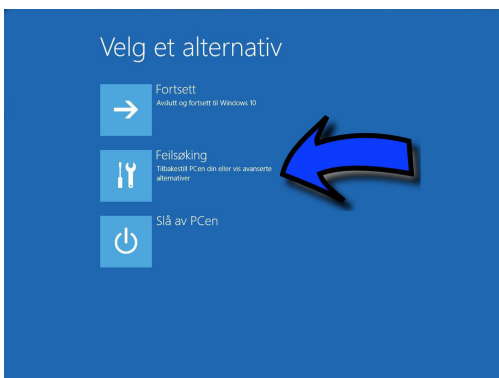


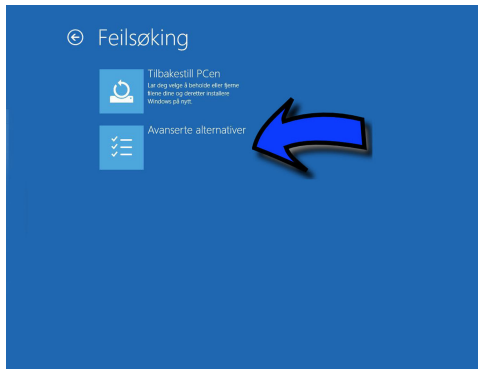
4. The PC will now into advanced start-up mode.



**Your PC will appear to restart and then popup with another menu with several options.**

6. Select Troubleshoot, then Advanced Options, then Windows Startup Settings, then Restart.





7. Press Restart. Once the PC restarts select the option Disable Driver Signature Enforcement. Press number 7 on your keyboard.



8. When Windows finishing the boot procedure you'll be able to install the drivers for your USB input.

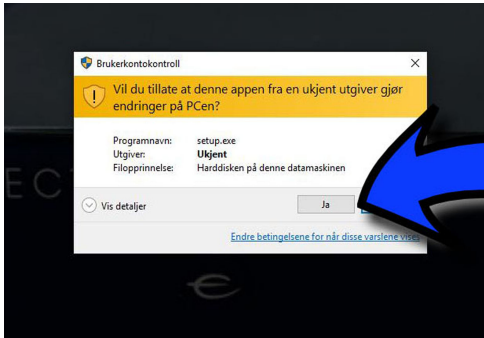
**Follow the next procedure for proper installation of the Windows 10 driver.**

**Restarting after that will return the PC to its normal code enforcement policy.**

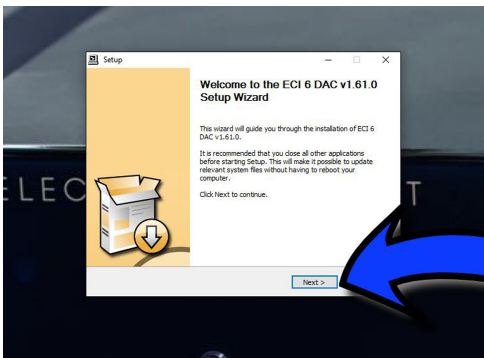
# Windows 10 driver installation instructions for ECI6D/DS

Make sure using the correct drivers for ECI6 D/DS

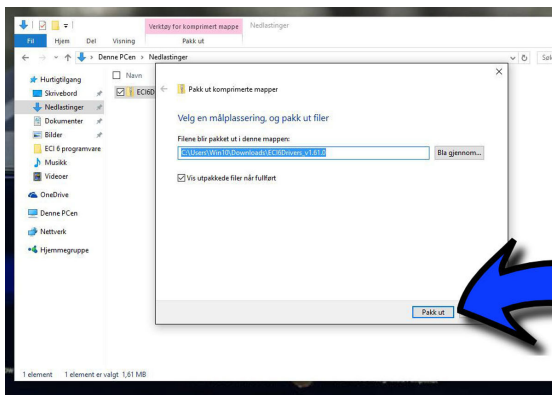
1. Find the folder with driver installation files on your PC or USB drive and click Setup.exe . The following question appears:



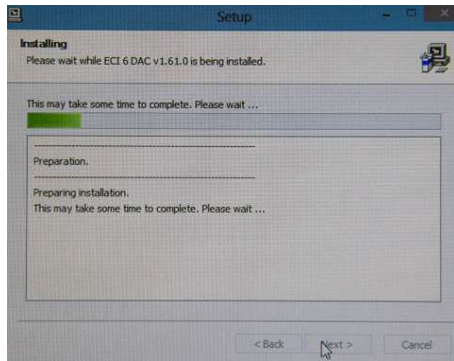
2. Click YES and the installation will start.



3. Press Next, then confirm or change the folder for the installation. Press Install when done.



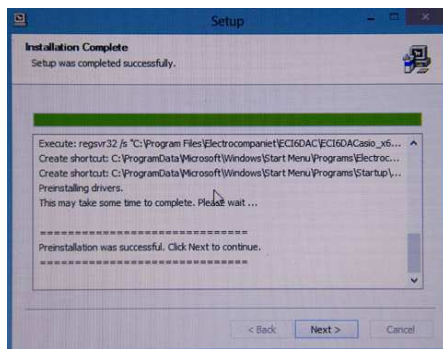
4.



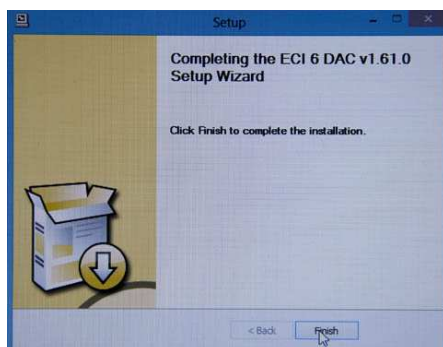
5. The following warning will show up 2 times during the installation process. Confirm Install this driver software anyway.



6. The installation process is completed when the following window appears. Press next.

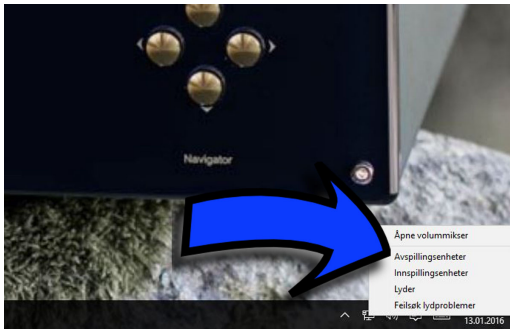


7. Press Finish.

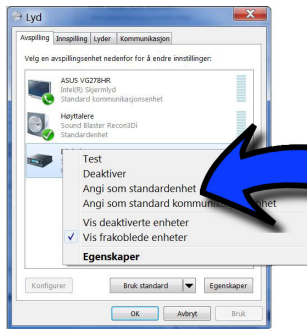


The following procedure shows how to setup the Electrocompaniet USB device as the standard audio device.

1. Rightclick on the speaker icon in right corner, leftclick on playback devices.



2. The Electrocompaniet USB Audio device should be listed under devices. Right click on the icon.



Congratulations! You are done!