



AVL Looms
2360 Park Avenue
Chico, CA 95928-6785
U.S.A.

530 893-4915
530 893-1372 fax
sales@avlusa.com
www.avlusa.com

Buttons on Weaving Tab

The labels for the buttons on the weaving tab will no longer change when the button is activated. Instead, a checkmark will indicate when the button mode is activated. The buttons are now labeled Power, Tabby, Reverse, and Unweave.

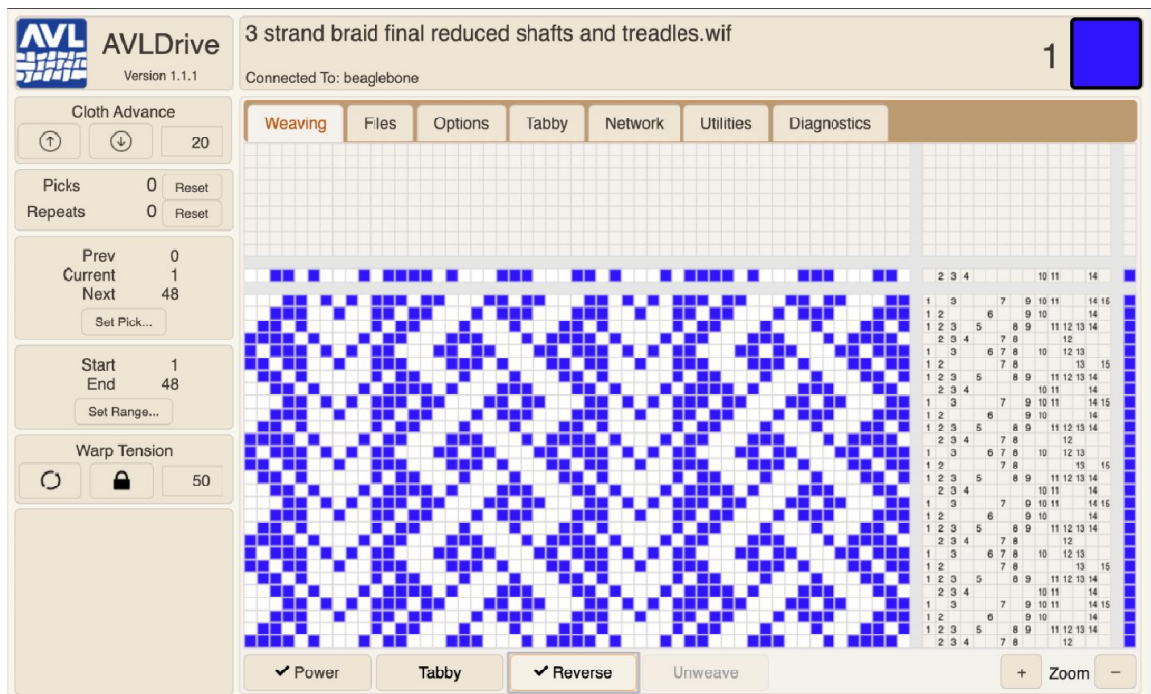


Figure 1 - Weaving tab with new buttons

Tabby

Corrected an issue where the loom would select "Odds and Evens" as the currently selected tabby whenever the loom was restarted after being unplugged. The currently selected tabby will now remain as it was before power was lost.

There is now a tabby called "Default Tabby," which is initially the same as "Odds and Evens," but can be edited by the user. The "Default Tabby" cannot be renamed or deleted.

Network Tab

Added an option to turn off the router connection. If you are using a router, click the button to Enable Router Connection. You will then be able to fill in the name and password for the router.



If the router connection is not enabled, the USB connection is still available and a private network will be created by the loom.

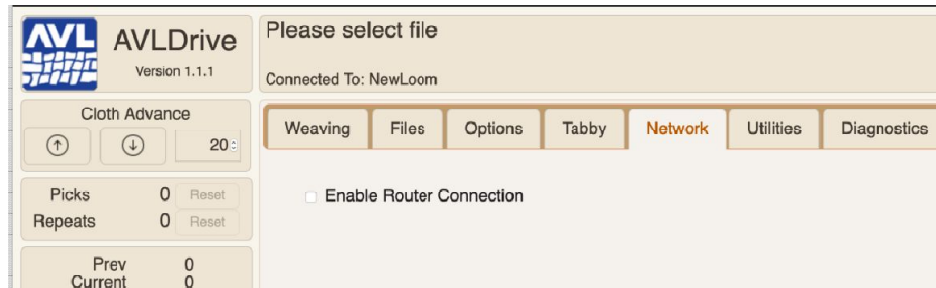


Figure 2 - Network tab with router turned off

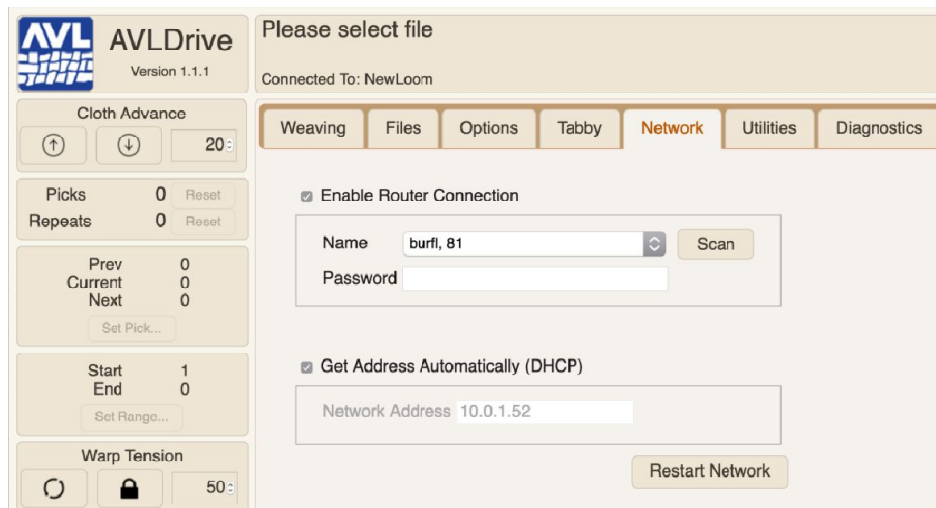


Figure 3 - Network tab with router turned on