



AVL Looms  
2360 Park Avenue  
Chico, CA 95928-6785  
U.S.A.  
530 893-4915 . 530 893-1372 fax . sales@avlusa.com . www.avllooms.com

## **Compu-Dobby® 5 (CD5) Software Release Notes**

**Updated 5/1/2023**

### **v.1.4.3 - Software Update**

Resolved an issue that caused the CD5 to stop working when more than one user attempted to login to AVLDrive.

Resolved an issue that caused the CD5 to stop working after Power was interrupted and/or loom was improperly shutdown.

Resolved an issue that could cause the CD5 to stop working when the threading section is missing from a WIF file.

Resolved an issue that could cause AVLDrive login failure after changing the Loom Name.

Resolved an issue that could cause file upload failure due to file size when uploading WIF files through Weavepoint.

### **v. 1.4.2 - Software Update**

Added support for looms with non-standard number of shafts.

### **v. 1.4.1 - Software Update**

Added support for Little Weaver 2 looms.

Resolved an issue that could cause the software update process to fail.

### **v. 1.4.0 - Software Update, minor version release**

Added Compu-Dobby® 5 (CD5) error detection, and additional performance improvements. The Diagnostics tab now includes a section for detected loom errors with buttons to download the errors (.txt file) and clear them. The Error LED on the front panel now blinks slowly when certain errors have occurred, or stays on when a critical error has occurred. Note: when a critical error has occurred, the CD5 will automatically power down to standby mode to prevent damage to the CD5 and/or the loom. Dobby voltages in the Diagnostics tab are now displayed horizontally.



Added option "Logout Button" to Options tab. When checked, this allows a user to logout any/all users currently logged in to AVLDrive when the "...a computer is already connected" message appears.

AVLDrive now guides the user through changing network settings (Router/LoomDirect connection).

Added to and updated display features including wait indicators and popup messages to inform the user, and other misc. display updates.

Added a "Download" button to the log display window. The log can now be downloaded (.txt file) directly to any device connected to the CD5.

Up and down arrow keys (keyboard) will change pick on Weaving tab to prev/next line. (previously left/right arrows).

Display LoomDirect name and address in Network tab.

Show/Hide wifi password in Network tab.

Disable buttons (with functionality that requires power to be on) when power is off/standby.

Added the following URL commands (intended for troubleshooting and/or informational purposes):

- "showConfig" - displays the loom configuration. Enter ":8080/showConfig" after the URL or IP address in the web browser.
- "showErrors" - displays errors detected, if any. Enter "/showErrors" after the URL or IP address in the web browser.
- "clearErrors" - clears errors and resets the error LED. Enter "/clearErrors" after the URL or IP address in the web browser.
- "checkpoint" - displays the current state of the loom. Enter ":8080/checkpoint" after the URL or IP address in the web browser.
- "calibrate" - performs tension calibration (no solenoid self test). Enter "/calibrate" after the URL or IP address in the web browser.
- "selftest" - performs solenoid self test (no tension calibration). Enter "/selftest" after the URL or IP address in the web browser.
- "loomState" - Displays the current state of the loom. Enter "/loomstate" after the URL or IP address in the web browser.

Fixed an issue that caused the CD5 to not save the last pick that was woven.

Fixed an issue that caused LoomDirect to not start after router connection failure.



Fixed an issue that could cause the calibration message to not appear during calibration.

Resolved an issue that could cause a wif file to be unusable after renaming.

Fixed an issue that allowed the user to 'Set pick' when in unweaving mode.

Fixed an issue that could cause incorrect doobby voltage when the Power button is double-clicked.

Fixed an issue that could cause 'Fetch Configuration' to fail.

### **v. 1.3.13 – Software Updates**

Fixed an issue that could cause the CD5 to stop working if weft units are not specified in a weaving (.wif) file.

### **v. 1.3.12 – Software Updates**

Fixed an issue that could cause the CD5 to stop working when the configuration did not have cloth advance or warp tension.

### **v. 1.3.11 – Software Updates**

Stability and performance improvements.

### **v. 1.3.10 – Software Updates**

Resolved an issue that could cause Mac USB connection failure.

Added "os\_update" command. This installs an update to the CD5 operating system that fixes the above Mac USB connection failure issue. Enter ":8080/os\_update" after the URL or IP address in the web browser.

### **v. 1.3.5 – Software Updates**

Improvements to the network start that resolved an issue with the CD5 indicating that it was creating a local network (green network LED), but not actually transmitting.

Resolved an issue that led to a missed pick when the power was turned off and back on. It is important to close the shed when turning the power back on so that the solenoids can be fired to establish the correct pick.

The Files tab now displays the name of the most recently used WIF file.



#### **v. 1.3.4 – Software Updates**

Corrected an issue that made repeat counter increment on every pick. The repeat counter now increments whenever the selected range is repeated.

Reworked initialization to keep self test from interfering with first pick.

Improved switching modes; i.e., weave to unweave, pattern to tabby, forward to reverse. Previously, a pick would occasionally be incorrect after a switch from one mode to another.

Disabled cloth advance during unweaving.

Added "reboot" command. This causes a complete restart of the loom and takes a couple of minutes. Enter `"/reboot"` after the URL or IP address in the web browser.

Renamed "reset" command to "logout" to clarify the functionality. This forces the current session to be disconnected from the loom and is used to clear a "loom is busy" state. Enter `"/logout"` after the URL or IP address in the web browser. To completely reset the loom use the "reboot" command.

#### **v. 1.2.4 – Software Updates**

Corrected an issue that showed controls for two beams, even when the loom only had one warp beam. This issue first appeared in v. 1.2.0.

#### **v. 1.2.3 – Software Updates**

Corrected an issue that could cause the loom to lift the wrong harnesses when changing modes; for example, between tabby and pattern, between forward and reverse, or between weave and unweave.

#### **v. 1.2.2 – Software Updates**

Stability and performance improvements.

#### **v. 1.2.1 – Software updates**

Fixed an issue that caused the CD5 to stop working when there was no cloth advance system attached.

#### **v. 1.2.0 – Software updates**

Stability and performance improvements.

Changes to support future looms.

A new option, "reboot," that allows the user to completely restart the loom.



A new option, “rollbackUpdate”, that allows the user to rollback a software update. This option will restore the loom to the condition it was in prior to the most recent update.

### v. 1.1.3 – Software Updates

Corrected an issue which caused a failure during the initialization of the current tabby.

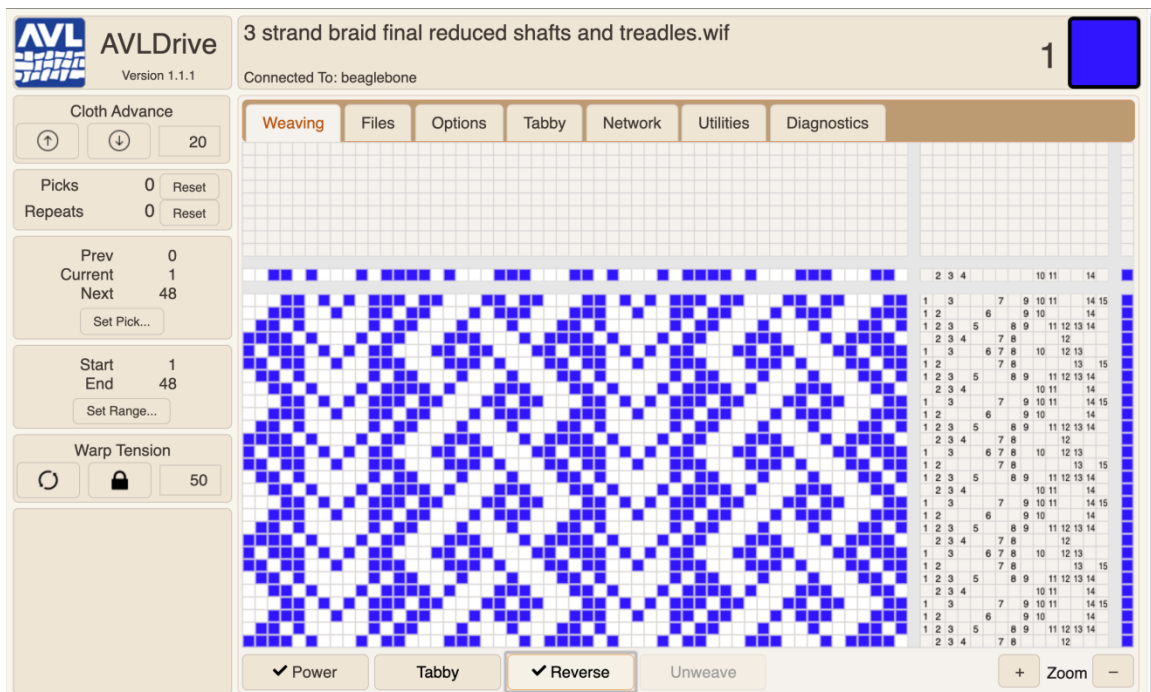
### v. 1.1.2 – Software Updates

Corrected an issue where the loom may create the Default Tabby file multiple times.

### v. 1.1.1 – Software Updates

#### Buttons on Weaving Tab

The labels for the buttons on the weaving tab will no longer change when the button is activated. Instead, a checkmark will indicate when the button mode is activated. The buttons are now labeled Power, Tabby, Reverse, and Unweave.



**Figure 1 - Weaving tab with new buttons**

#### Tabby

Corrected an issue where the loom would select “Odds and Evens” as the currently selected tabby whenever the loom was restarted after being



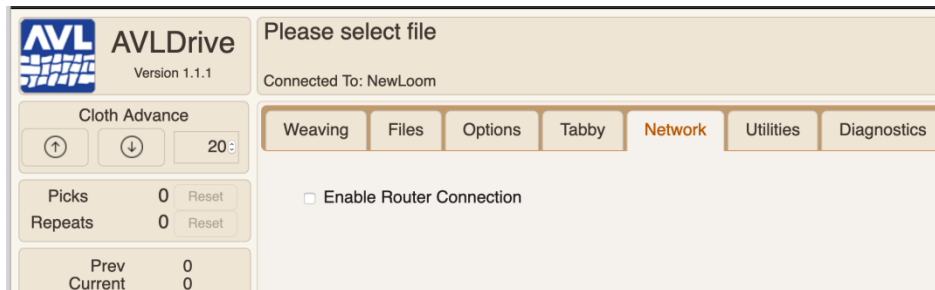
unplugged. The currently selected tabby will now remain as it was before power was lost.

There is now a tabby called "Default Tabby," which is initially the same as "Odds and Evens," but can be edited by the user. The "Default Tabby" cannot be renamed or deleted.

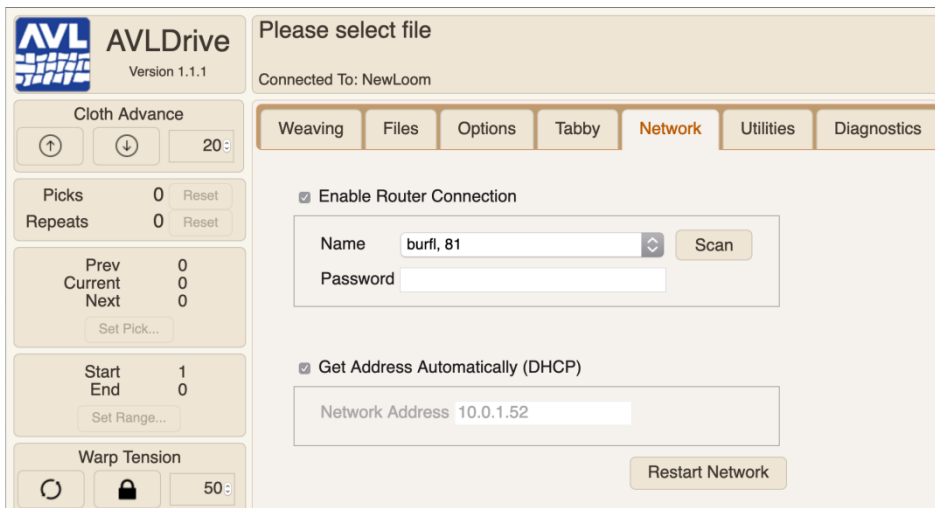
### Network Tab

Added an option to turn off the router connection. If you are using a router, click the button to Enable Router Connection. You will then be able to fill in the name and password for the router.

If the router connection is not enabled, the USB connection is still available and a private network will be created by the loom.



**Figure 2 - Network tab with router turned off**



**Figure 3 - Network tab with router turned on**