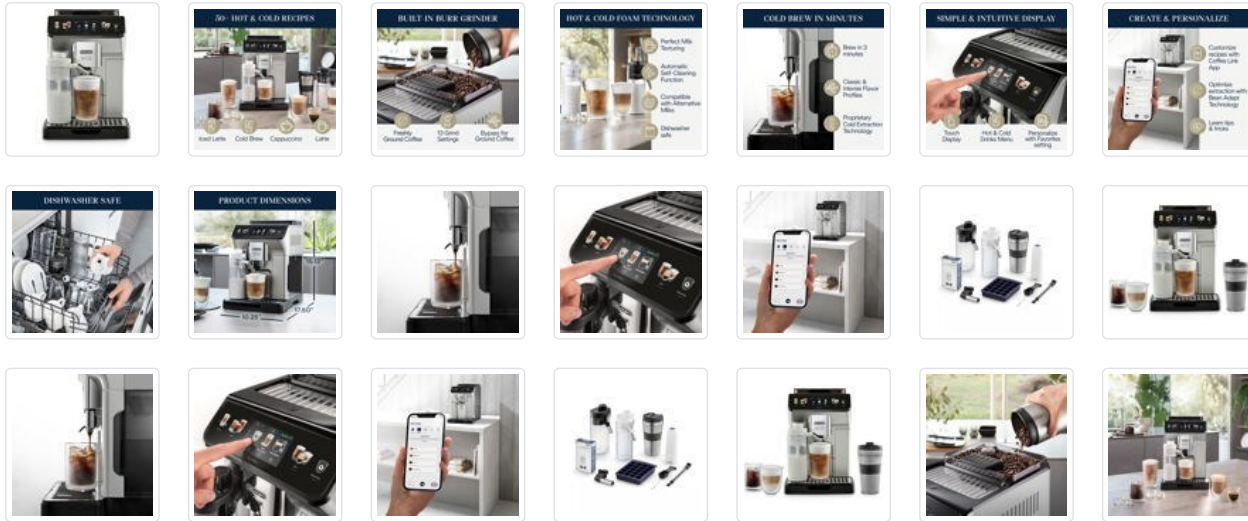


DeLonghi / ECAM45086S

Fully Automatic Machine Connected Cold Brew Eletta Explore



The possibilities are endless with the new De'Longhi Eletta Explore, the only fully automatic espresso machine with both hot and cold foam technology and now Cold Extraction Technology, letting you craft your favorite espresso beverages at home, including lattes, cappuccinos, iced lattes, cold brew, and so much more. The built-in, conical burr grinder lets you explore the world of specialty coffee with 13 settings and delivers the perfect grind, dose, and brew every time. With Eletta Explore, you can create over 50 recipes, hot, cold, and now cold brew, at the touch of a button. Experience cafe-style hot and cold foam beverages with De'Longhi's proprietary LatteCrema Hot and Cool Systems. The LatteCrema Hot System textures milk or your favorite milk alternatives to perfection for your favorite classic espresso beverages like lattes and cappuccino. The LatteCrema Cool System delivers velvety milk cold foam at the ideal temperature for cold drinks. Enjoy cold brew coffee in under 3 minutes with De'Longhi's Cold Extraction Technology. This proprietary technology utilizes precisely measured water flow and pressure rates, along with specific extraction temperatures, to create a delicious cold brew coffee in less than 3 minutes. Clean-up is simple thanks to our auto-clean function and detachable, dishwasher-safe design. The full-touch display and soft touch control icons allow you to navigate easily and craft your favorite espresso beverages with ease. With the Eletta Explore, you can personalize your favorite hot and cold recipes to your taste for the perfect brew every time. Unleash your creativity and enjoy your favorite espresso beverages, both hot and cold, at home with the new, innovative Eletta Explore. Hot, cold, perfetto.

- 50+ hot and cold recipes at the touch of a button, including espresso, cappuccino, latte, iced cappuccino, iced latte, cold brew, and more
- Built-in grinder delivers a precise, consistent dose of freshly ground coffee for all your favorite espresso beverages and cold brew drinks
- 13 grind settings to explore your favorite bean varieties and prepare them for optimal extraction
- LatteCrema Hot System textures milk or your favorite milk alternatives to perfection for your favorite classic espresso beverages
- LatteCrema Cool System delivers velvety cold milk foam at the ideal temperature for cold drinks
- Enjoy cold brew coffee in under 3 minutes with De'Longhi's proprietary Cold Extraction Technology
- Innovative Cold Extraction technology utilizes precisely measured water flow and pressure rates, along with specific extraction temperatures
- 3.5-inch TFT full-touch, colorful display and soft-touch control icons are intuitively designed to guide you through crafting your perfect coffee beverage
- Simple and user-friendly navigation help you filter through recipes quickly

Delonghi / ECAM45086S

Fully Automatic Machine Connected Cold Brew Eletta Explore

ITEM DETAILS

Category	Small Appliances
Color	Stainless
UPS Shippable	Y
Shipping Weight	34.5
UPC Code	044387450867
Country of Origin	RO-Romania

© Almo Corporation. All Rights Reserved.

Almo Corporation is not responsible for any errors, omissions or inaccuracies in the material provided on this site.