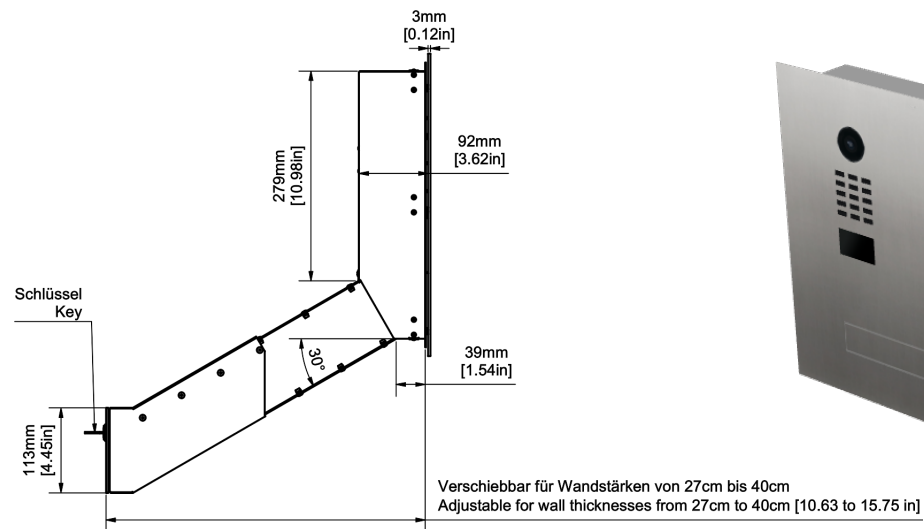
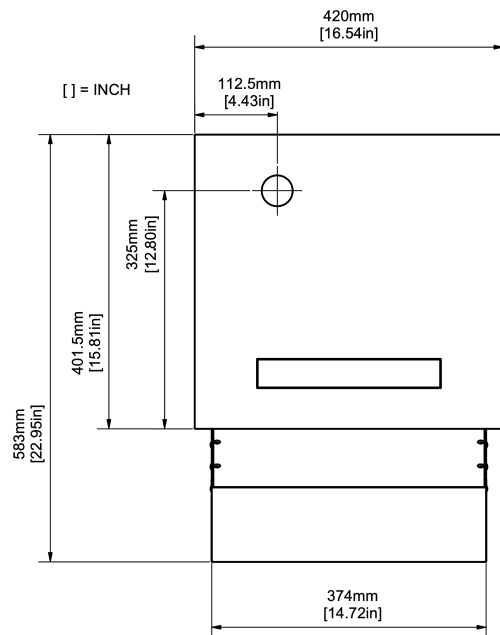


Representation of the outer dimensions (See the details in visualization)



## Technical data:

### Wall-through system with one throw-in flap

Material: Stainless steel V4A (salt-water resistant), brushed  
Flap: Letterbox flap without nameplate. Flush with front panel.

1x Keypad module with 12 stainless steel keys, backlit  
1x Rectangular call button with nameplate, for self-labelling, white backlit

This system is an individual production according to customer specifications. The legal right of withdrawal therefore does not exist according to § 312 g Abs. 2 Nr. 1 BGB. Since the automated production process is started immediately after receipt of the order, a cancellation, a return or exchange after placing the order is not possible.

Date: 2023-12-05  
Time: 01:04:43 CET  
Project ID: DBI-13492728



Bird Home Automation GmbH  
Uhlandstraße 165  
D-10719 Berlin, Germany  
Confidential