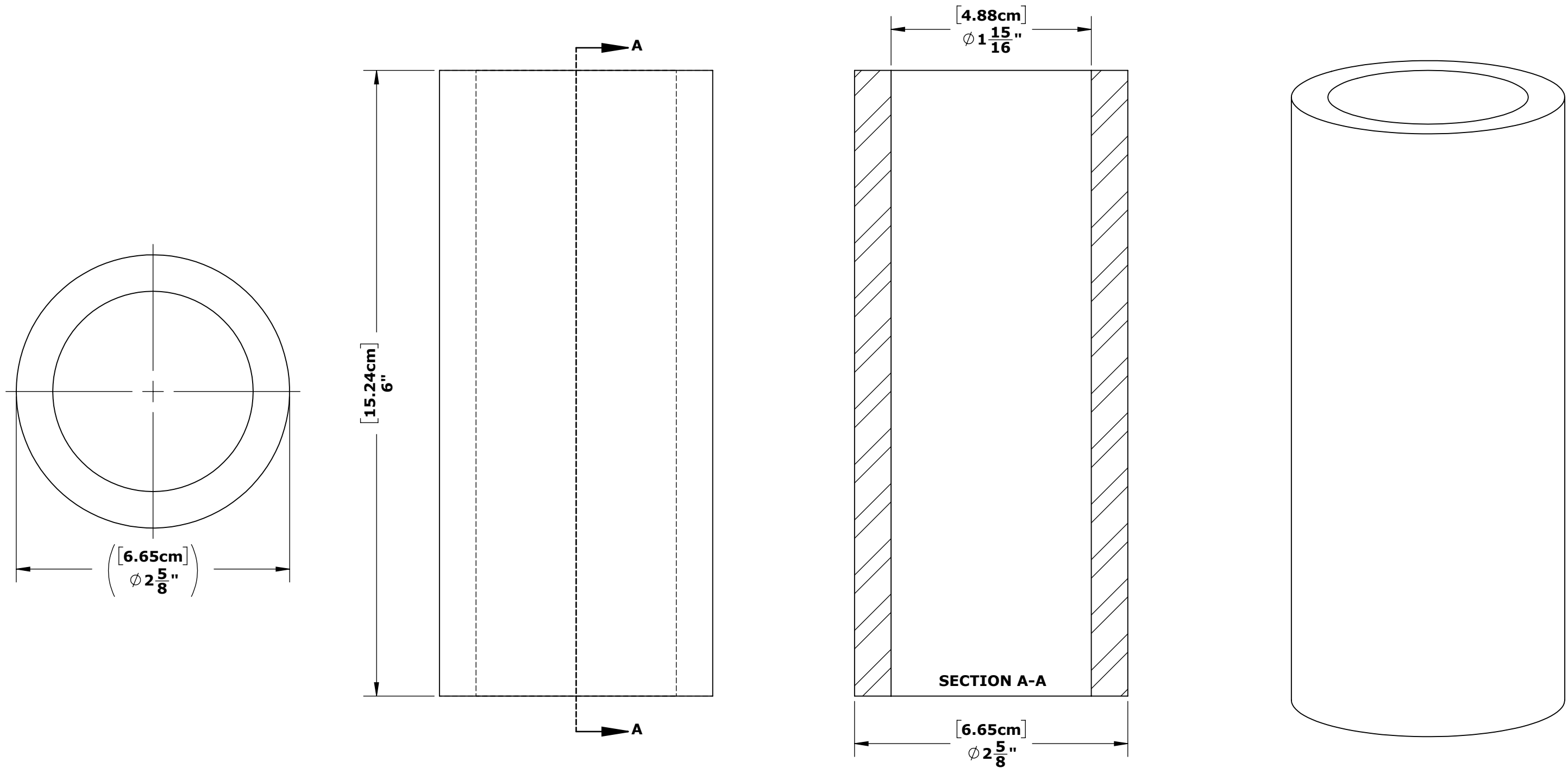


SPECIFICATIONS:

THE AQUA CREEK PRODUCTS SCOUT-HOYER LIFT ADAPTER SHALL BE A SLEEVE TYPE ANCHOR ADAPTER, USED TO ADAPT A $\phi 1.90$ "X6.00" POST TO A $\phi 2.63$ " INSIDE DIAMETER ANCHOR THAT IS ATLEAST 6.00" DEEP. THE ADAPTER SHALL BE MADE FROM STAINLESS STEEL.



SLEEVE - 1.90"ID X 6.00" T X 2.62"OD

**F-826
PART NO. INV01500**

**MATERIAL: 2.75"X.500" 304 S.S. RND. TUBE
FINISH: MILL
APPROX. WEIGHT: 4.33 LBS.**

TOLERANCES

DIMENSIONS ARE IN INCHES
UNLESS OTHERWISE SHOWN
FRACTIONAL: $\pm 1/16$
ANGULAR: $\pm 1^\circ$
TWO PLACE DECIMAL: $\pm .01$
THREE PLACE DECIMAL: $\pm .005$



9889 GARRYMORE LANE
MISSOULA, MT 59808
(406) 549-0769
FAX (406) 549-2602
www.AquaCreek.com

PROPRIETARY AND CONFIDENTIAL INFORMATION

THIS DRAWING AND ALL INFORMATION CONTAINED HEREIN IS THE SOLE PROPERTY OF AQUA CREEK PRODUCTS LLC. ANY REPRODUCTION IN PART OR AS A WHOLE WITHOUT WRITTEN PERMISSION FROM AQUA CREEK IS PROHIBITED.

*SPECIFICATIONS ARE SUBJECT TO CHANGE WITHOUT NOTICE

REVISIONS

REV.	DESCRIPTION	DATE	APPROVED
P1	PRODUCTION RELEASE	5/7/2021	J.MAXWELL
P2	CHANGED MATERIAL TO STAINLESS STEEL	1/11/2022	J.MAXWELL

MODEL
P2
REVISION

SLEEVE - 1.90"ID X 6.00" T X 2.62"OD - INV01500

51-163-220

SCALE
1:1

SHEET
1