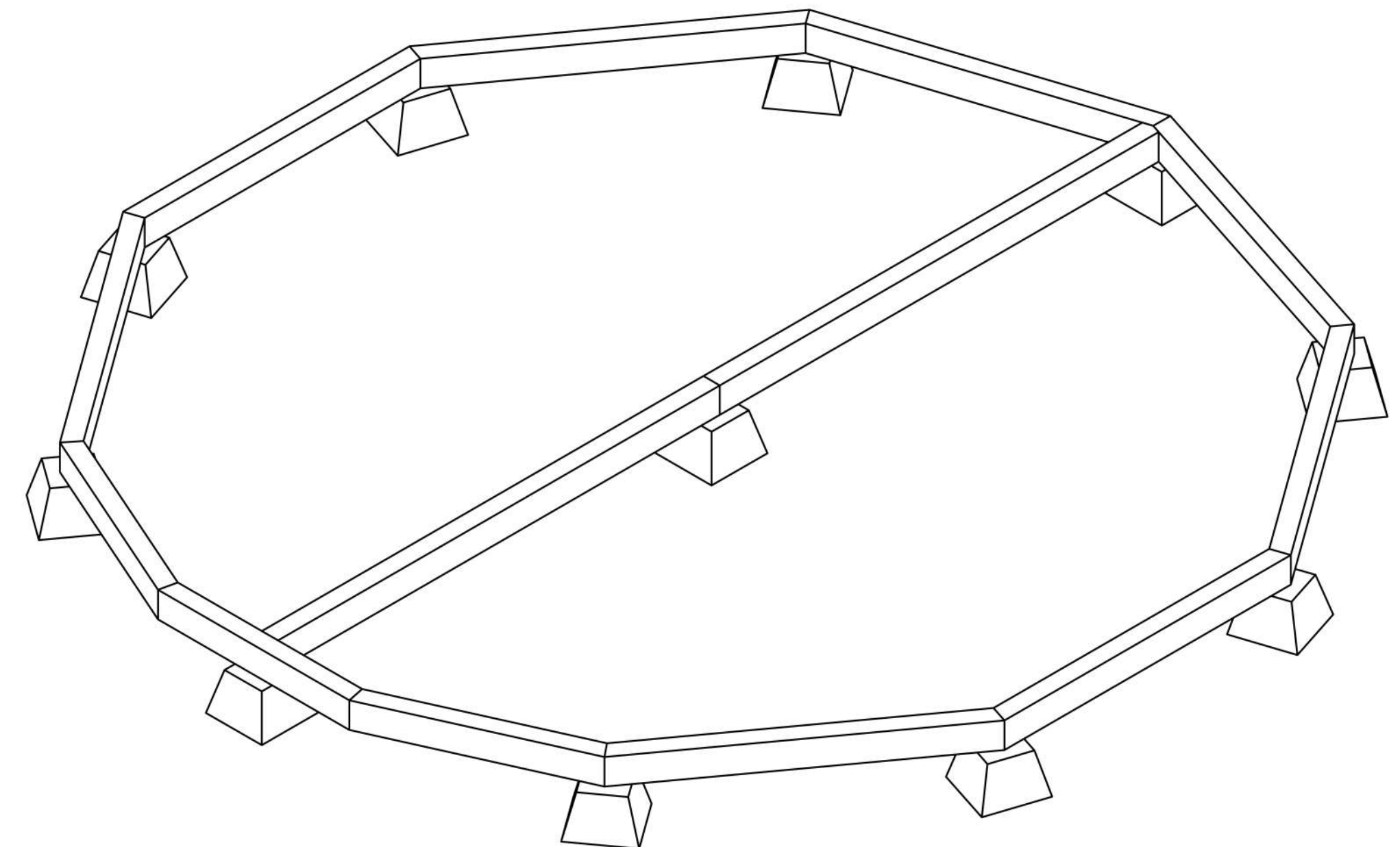
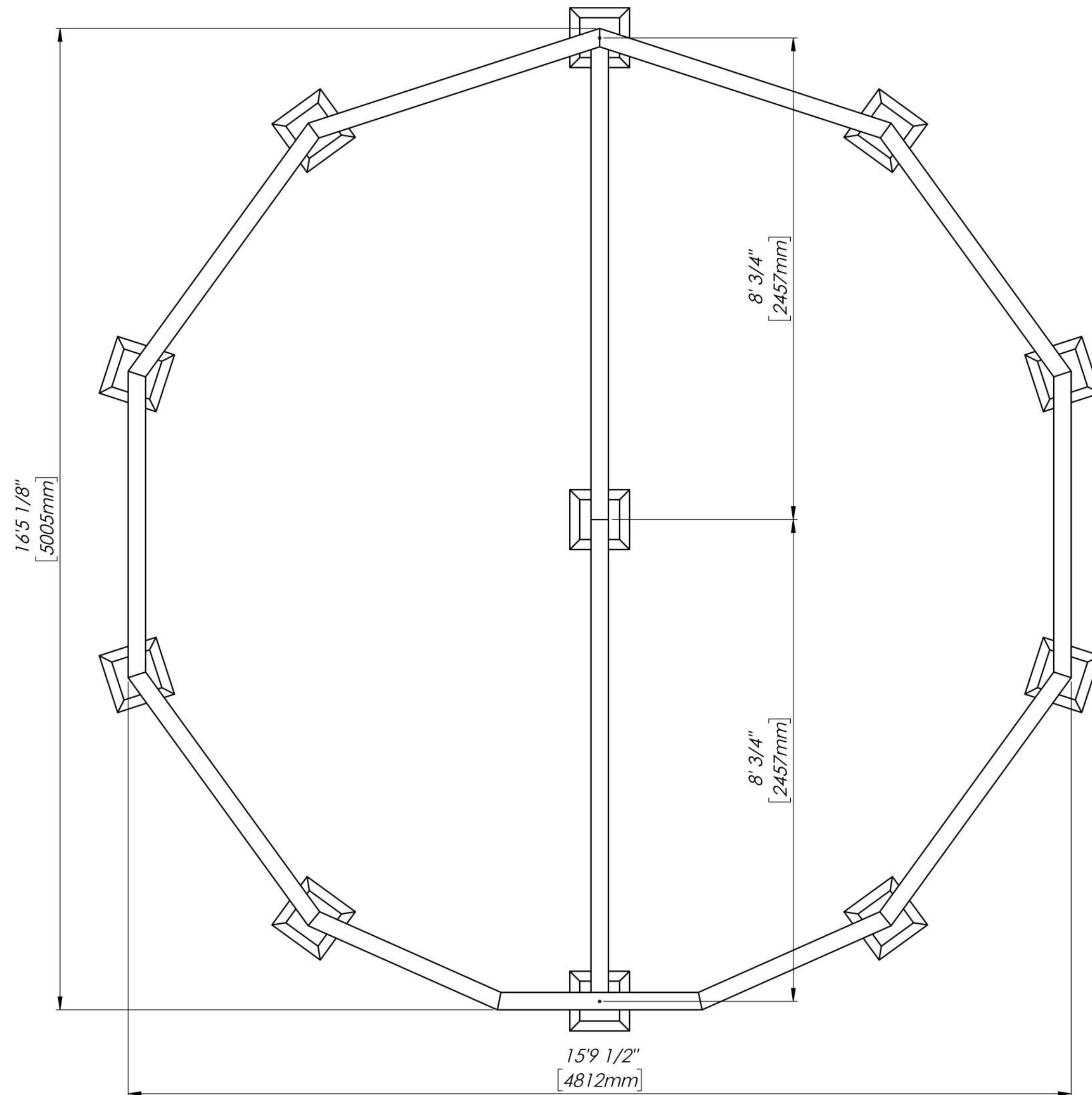
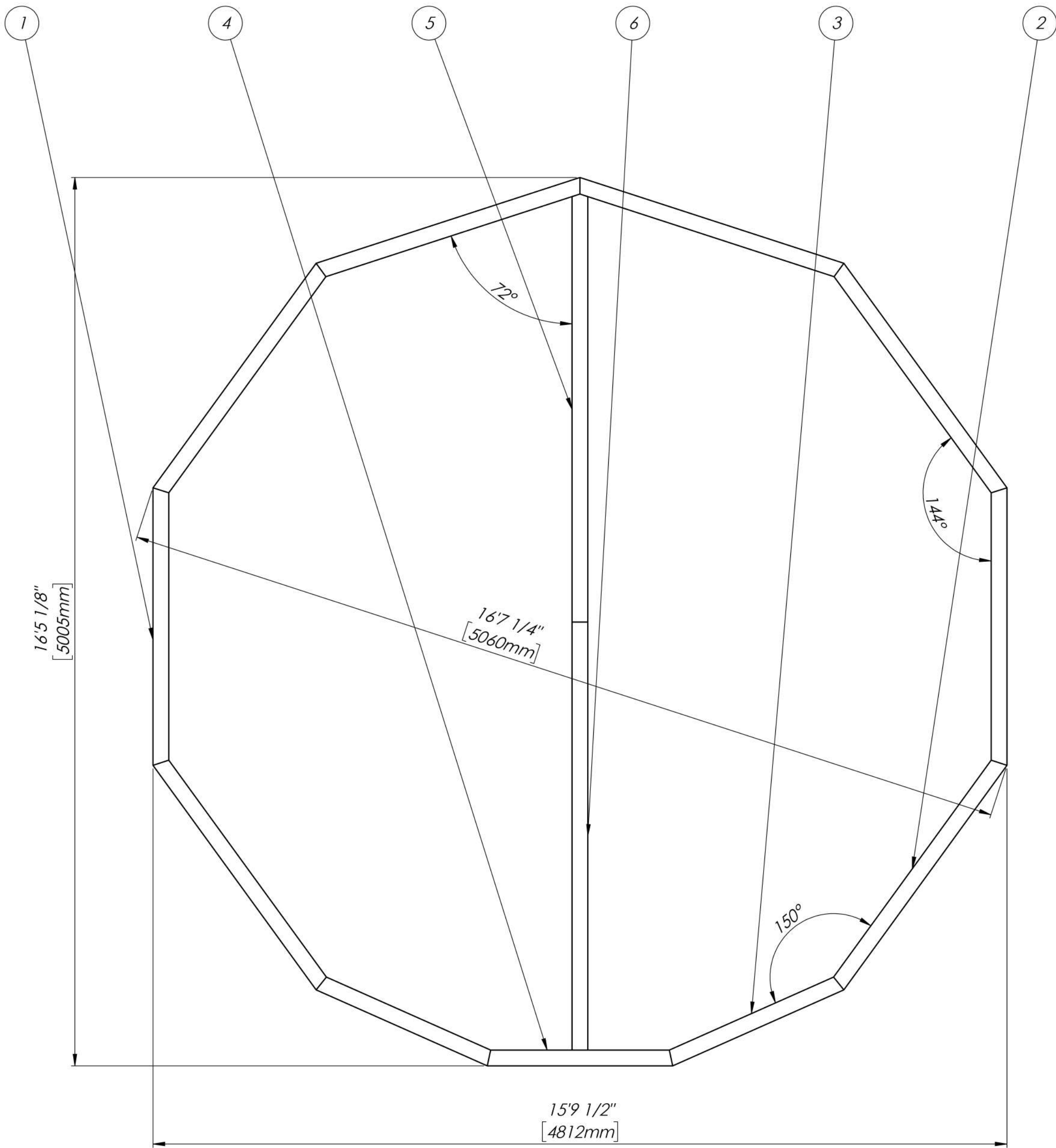


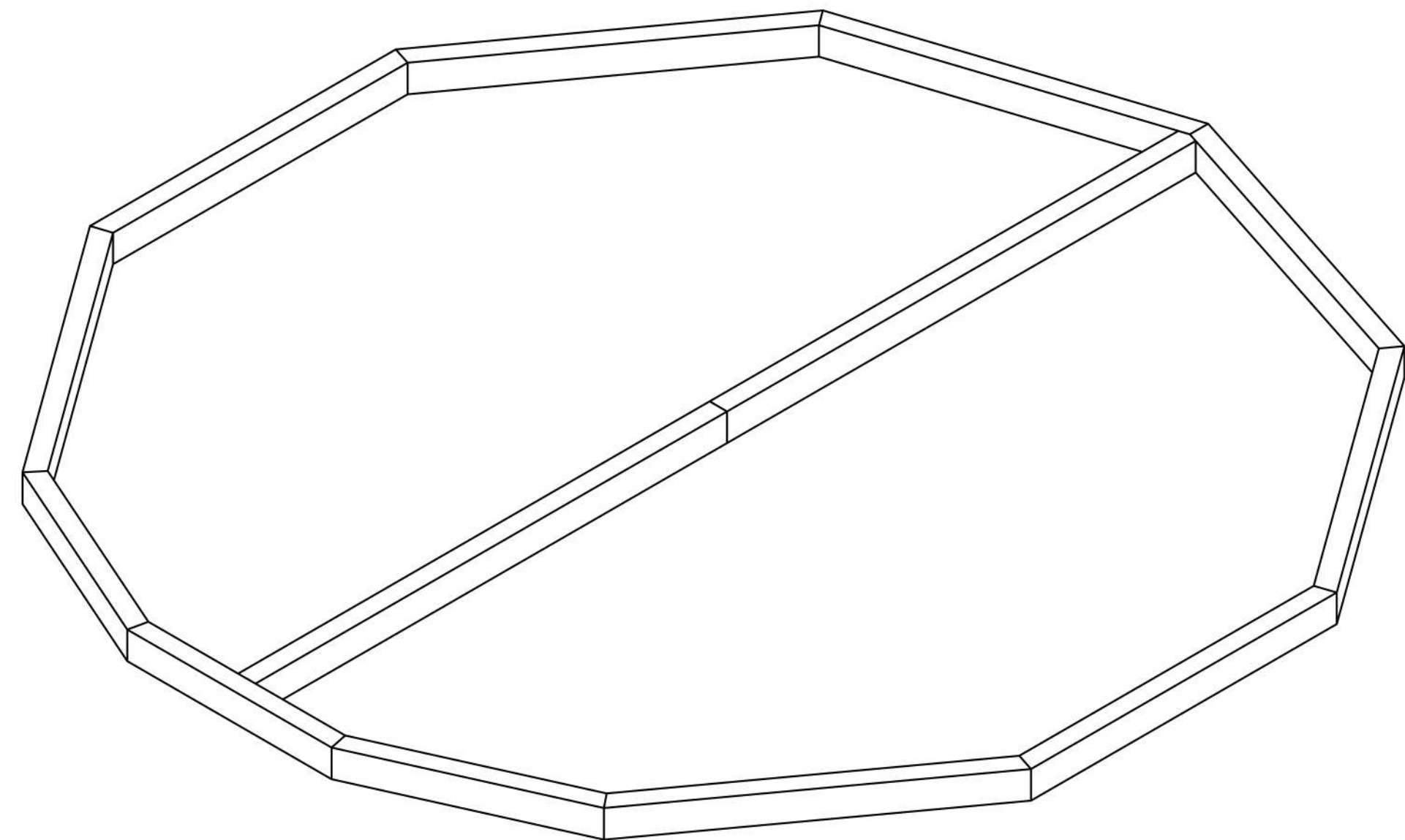
PIER BLOCKS LAYOUT AND RUNNERS

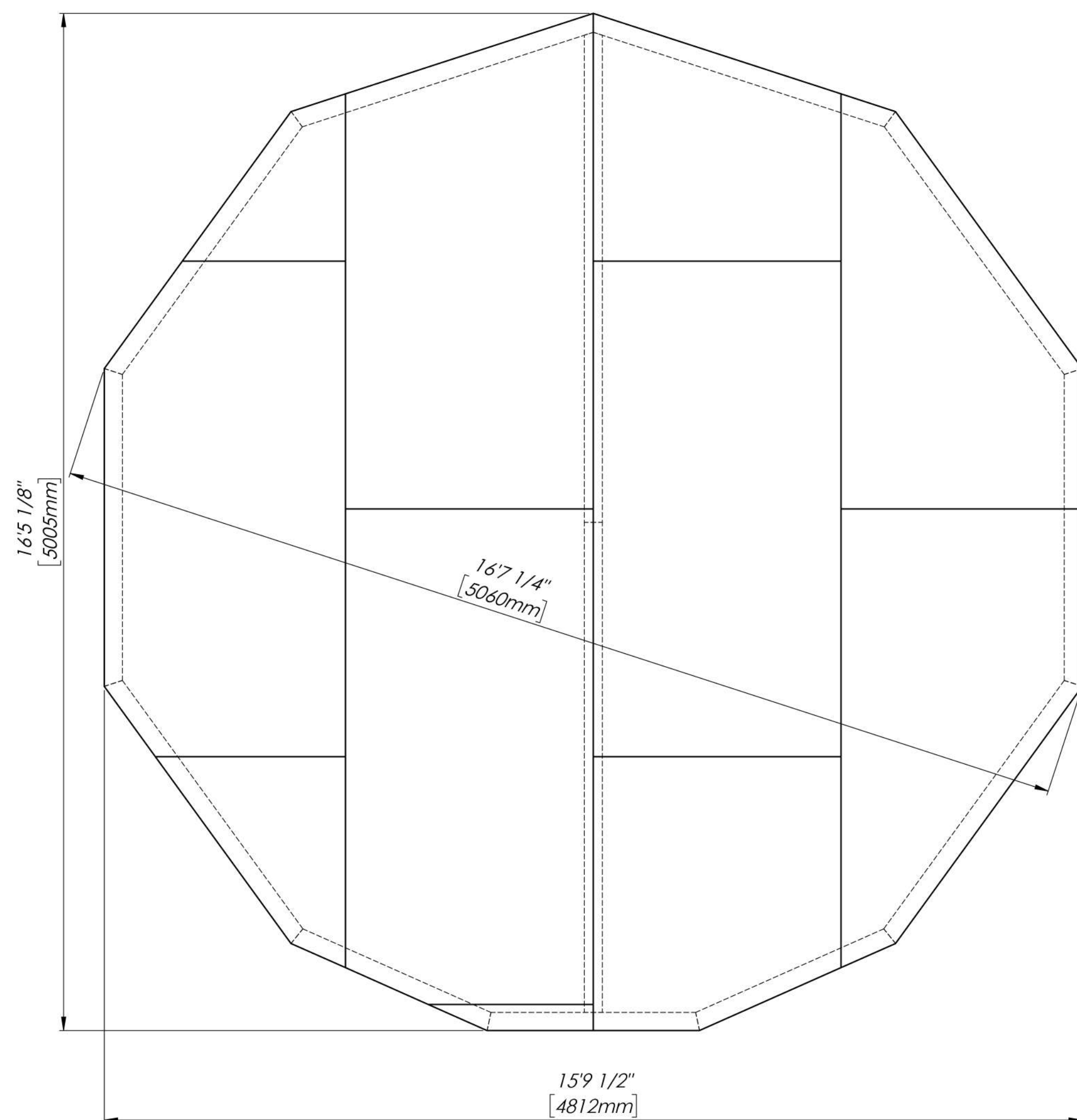
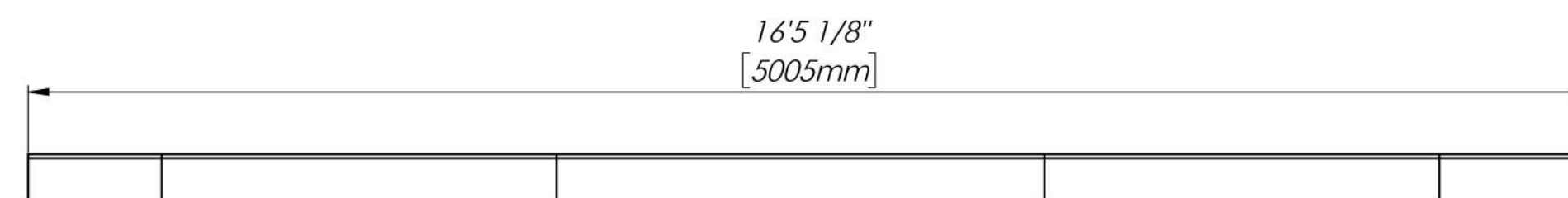
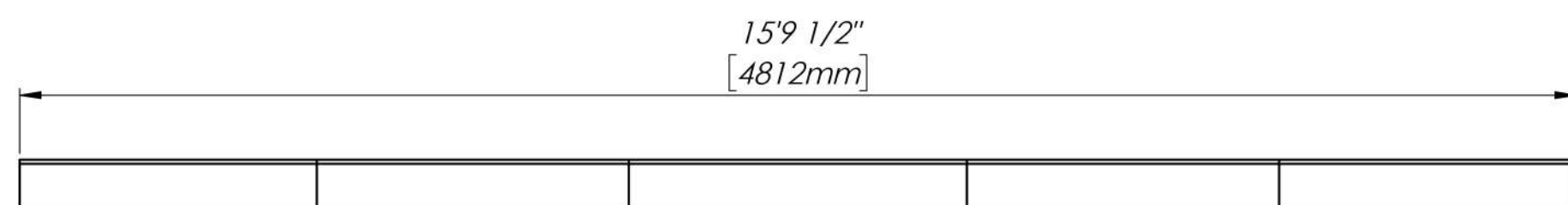




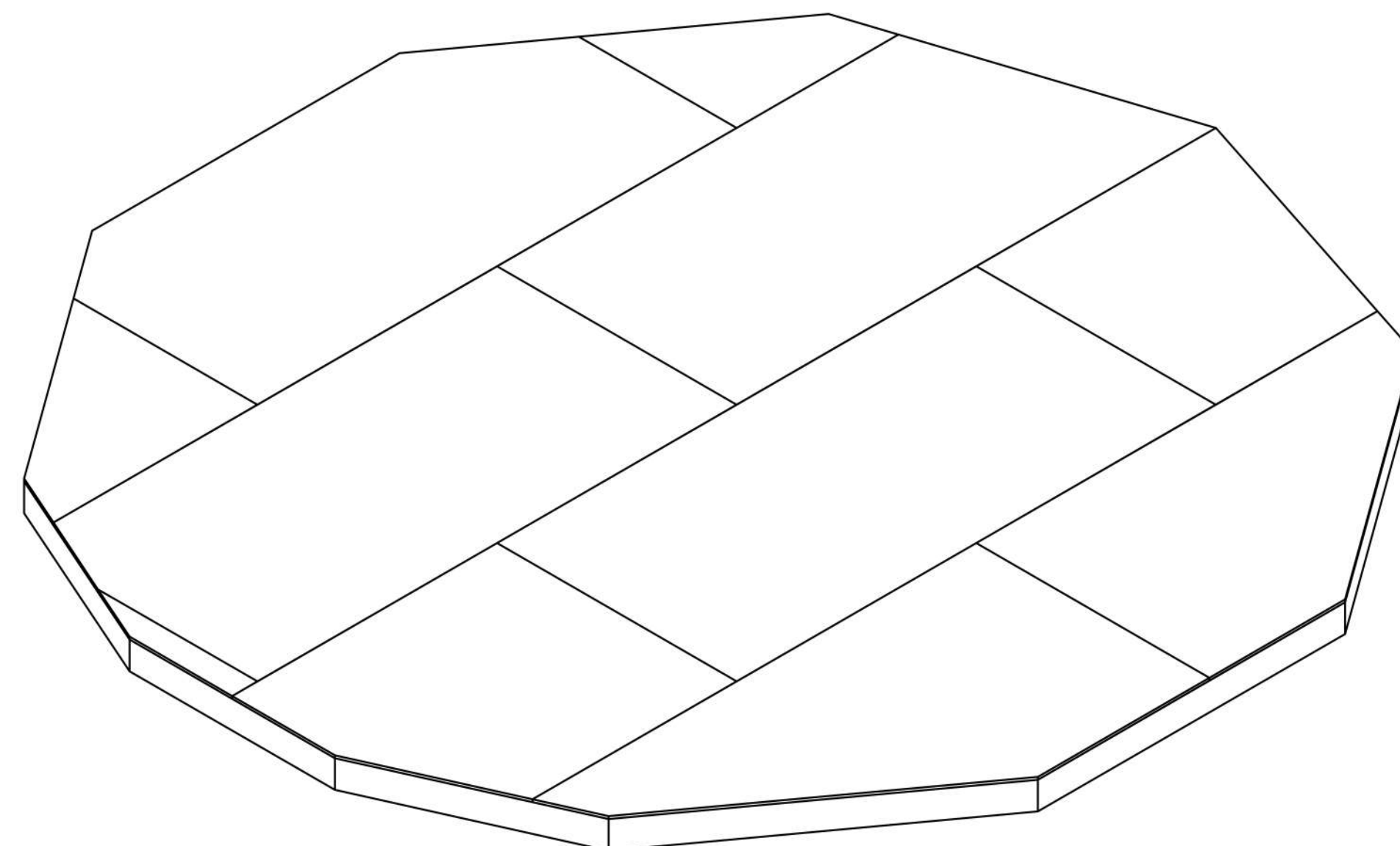
ITEM NO.	QTY.	Description	LENGTH	ANGLE1	ANGLE2	TOTAL LENGTH
1	6	4x6 Lumber	5'1 1/2"	18°	18°	67'2 5/8"
2	2	4x6 Lumber	5'1 1/2"	15°	18°	
3	2	4x6 Lumber	3'5 1/2"	12°	15°	
4	1	4x6 Lumber	3'5 1/8"	12°	12°	
5	1	4x6 Lumber	7'11"	0°	-	
6	1	4x6 Lumber	7'11"	0°	0°	

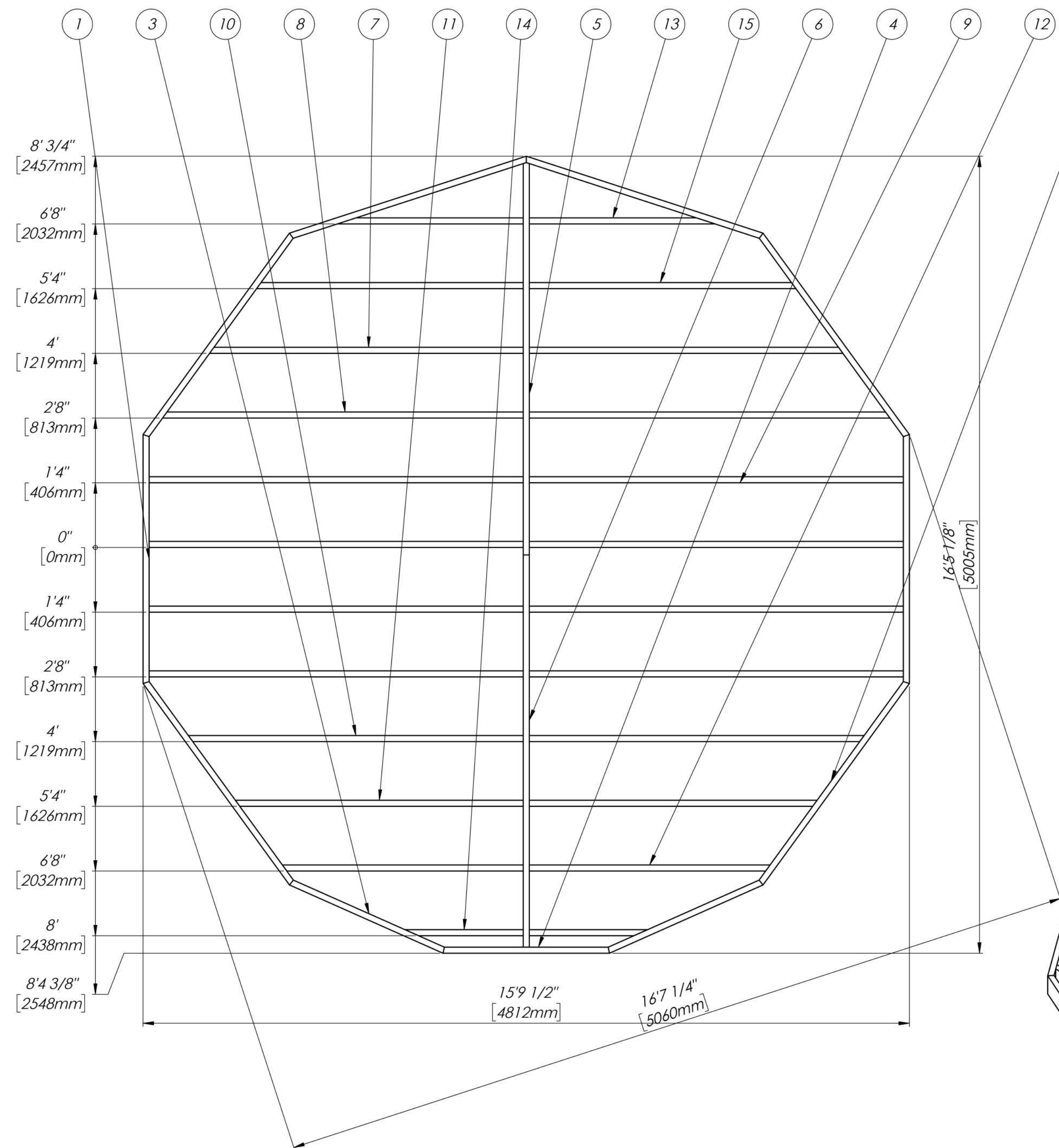
4X6 RUNNER DIAGRAM





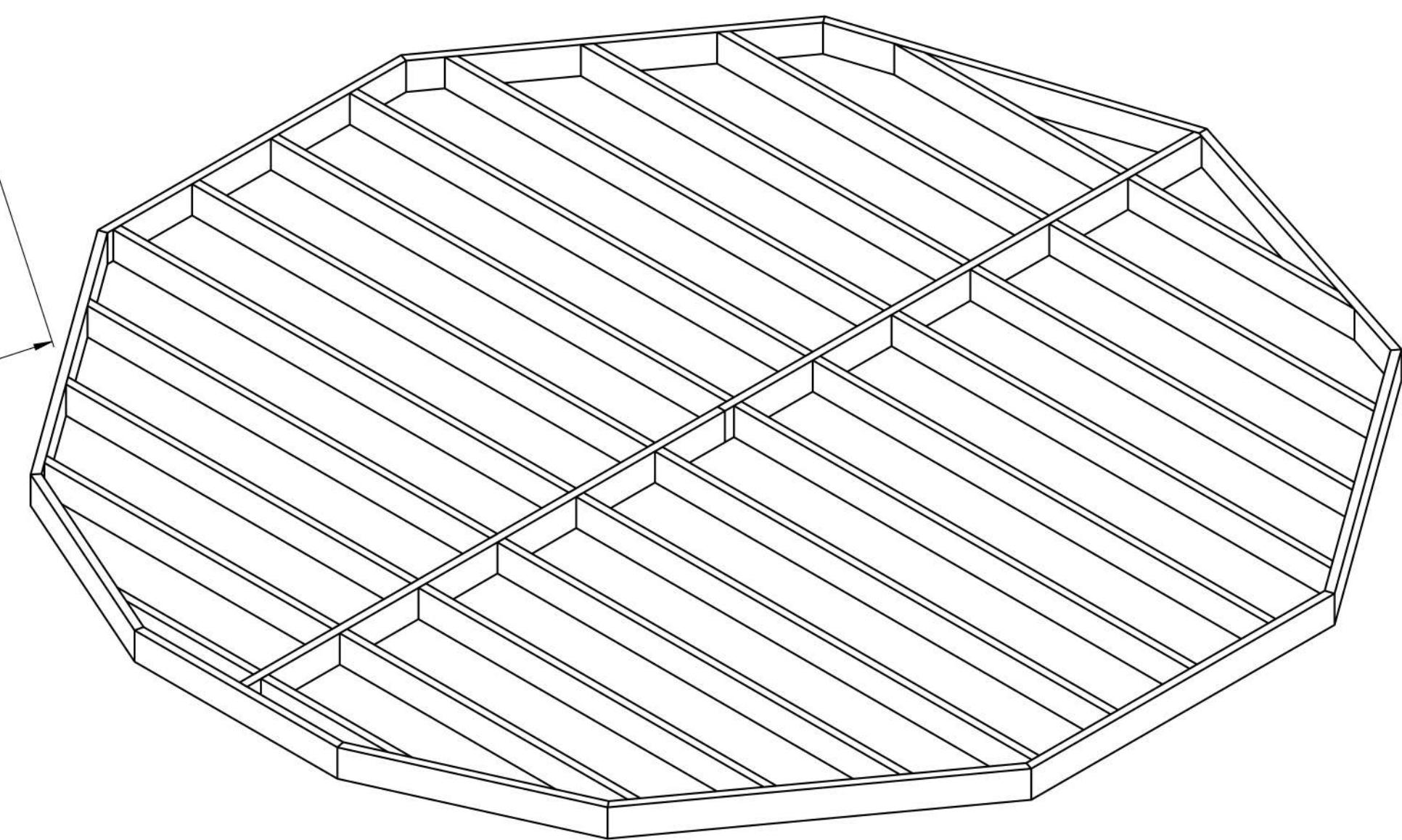
BOTTOM PLYWOOD LAYOUT OVER RUNNERS

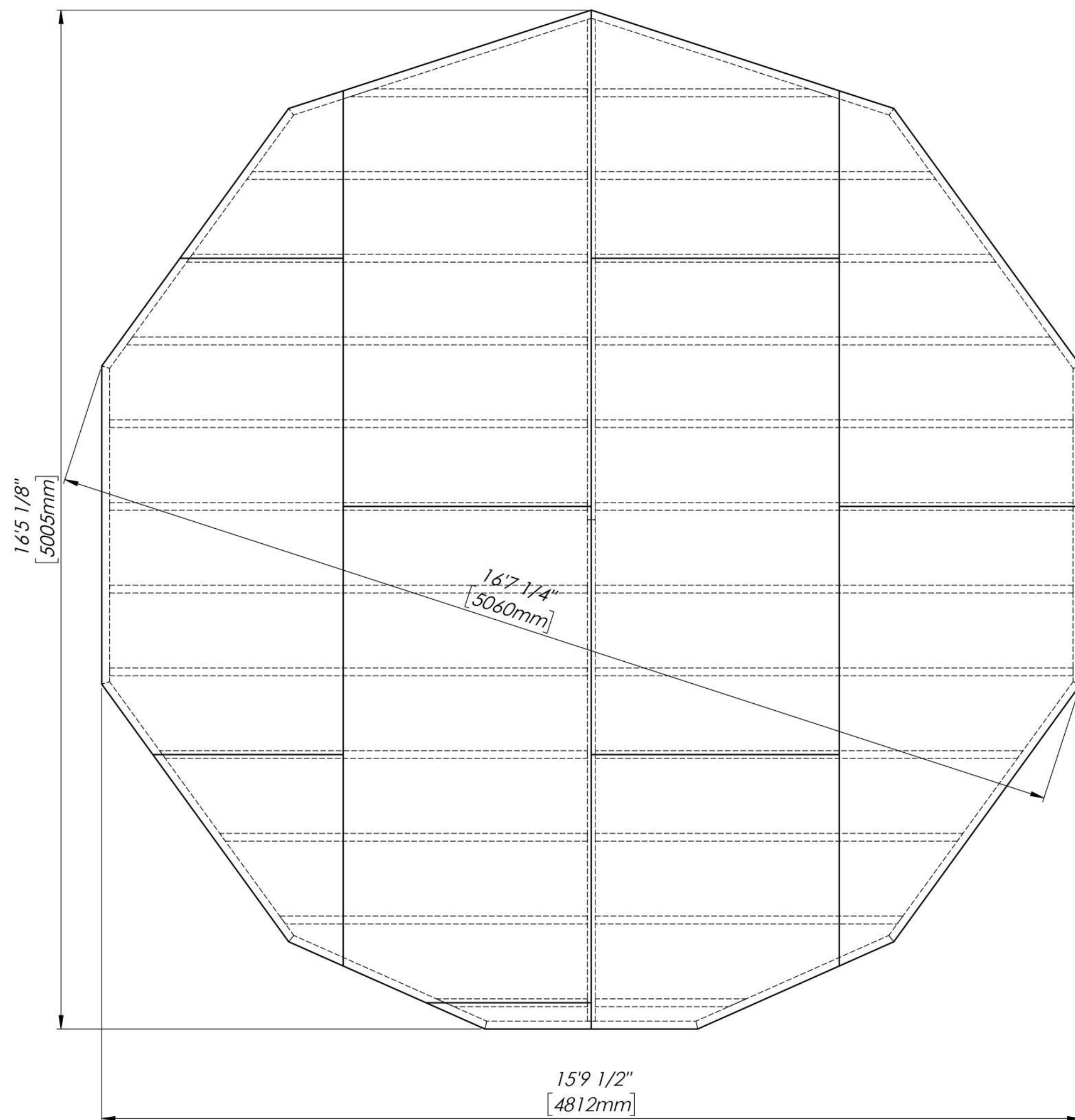
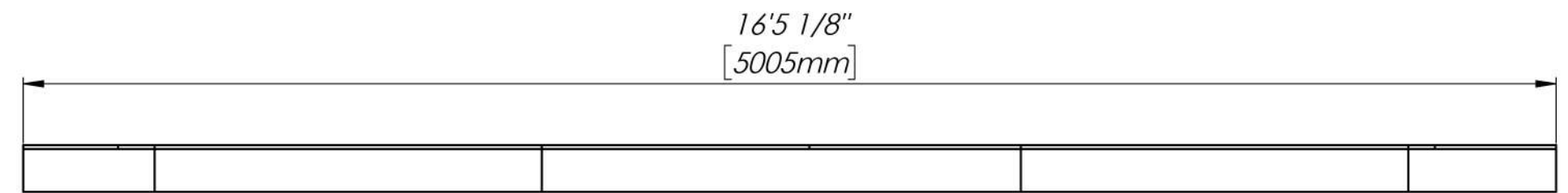
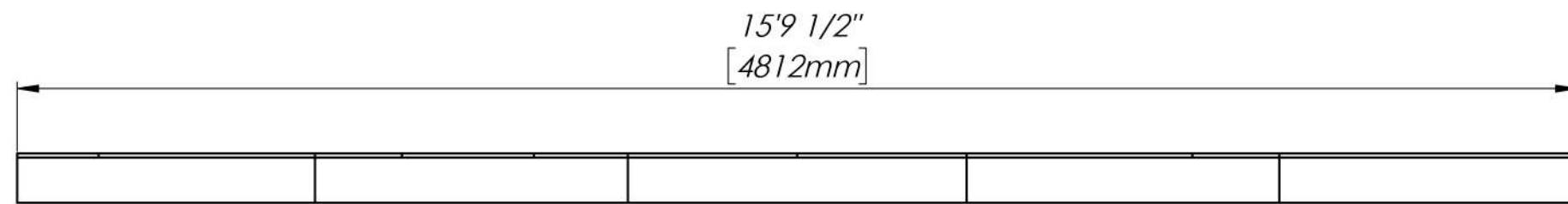




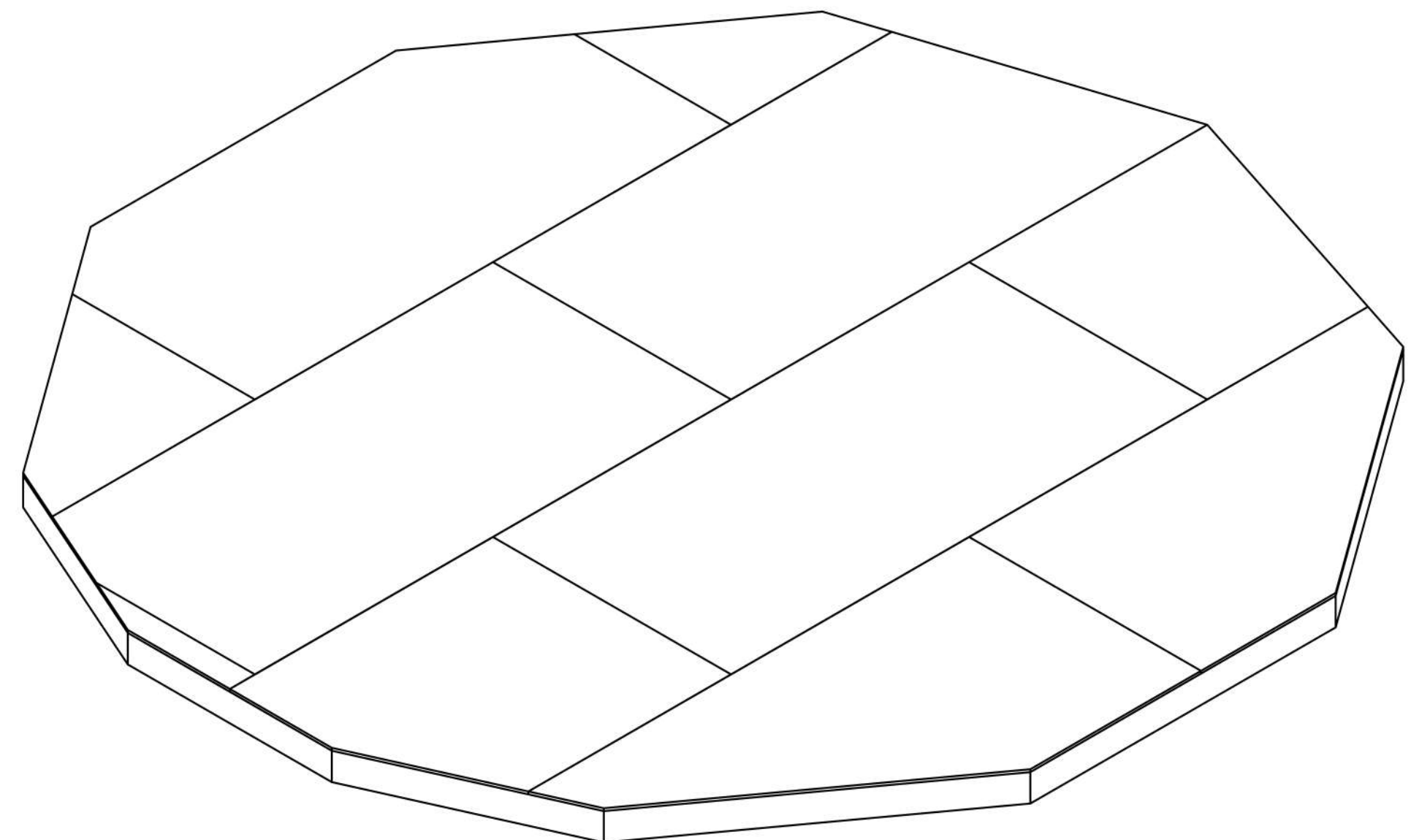
ITEM NO.	QTY.	Description	LENGTH	ANGLE1	ANGLE2	TOTAL LENGTH
1	6	2x6 Lumber	5'1 1/2"	18°	18°	216'1 1/8"
2	2	2x6 Lumber	5'1 1/2"	15°	18°	
3	2	2x6 Lumber	3'5 1/2"	12°	15°	
4	1	2x6 Lumber	3'5 1/8"	12°	12°	
5	1	2x6 Lumber	8'1"	0°	-	
6	1	2x6 Lumber	8'1"	0°	0°	
7	2	2x6 Lumber	6'5 1/2"	0°	36°	
8	2	2x6 Lumber	7'5 1/8"	0°	36°	
9	8	2x6 Lumber	7'8 1/2"	0°	0°	
10	2	2x6 Lumber	6'10 3/4"	0°	36°	
11	2	2x6 Lumber	5'11 1/8"	0°	36°	
12	2	2x6 Lumber	4'11 1/2"	0°	36°	
13	2	2x6 Lumber	3'10"	0°	72°	
14	2	2x6 Lumber	2'5 1/4"	0°	66°	
15	2	2x6 Lumber	5'5 7/8"	0°	36°	

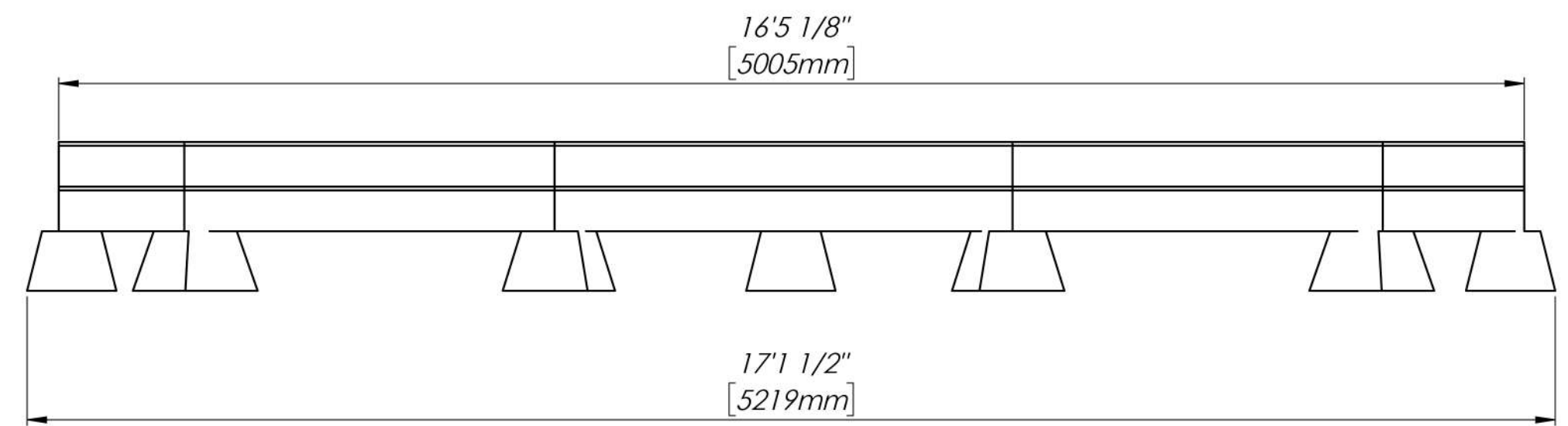
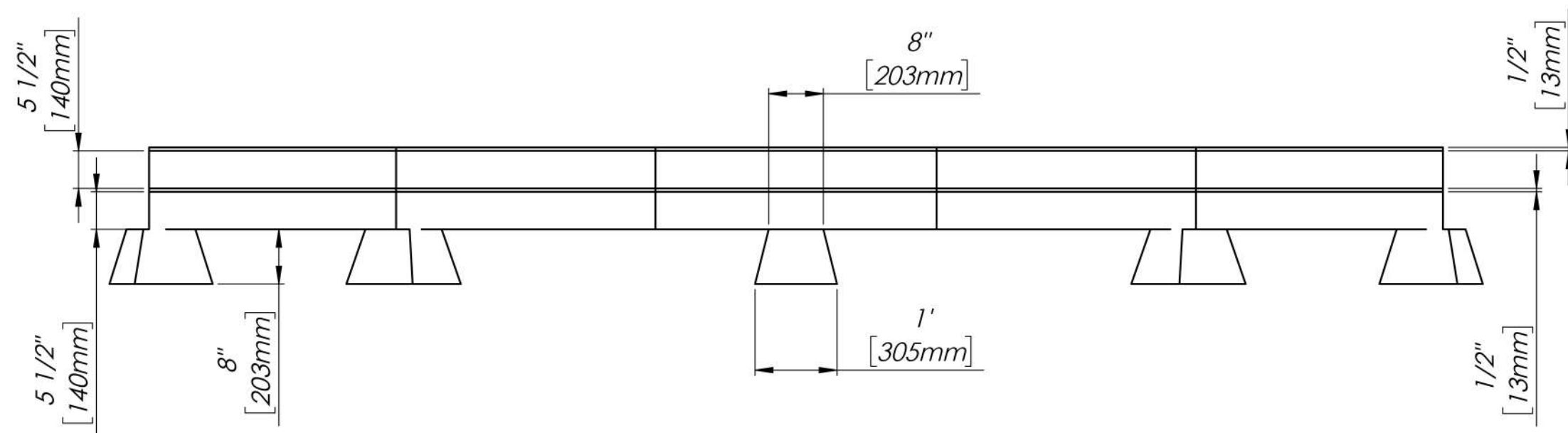
JOISTS WITH LENGTHS AND CUT ANGLES





TOP PLYWOOD
OVER JOISTS





FINAL MEASUREMENTS

