



EASTERN COUNTIES LEATHER

2021 - 2022

C O N T E N T S

Page 1 - 7	Purses & Accessories	Page 29 - 30	Womens Footwear
Page 8 - 11	Handbags	Page 31 - 32	Mens Footwear
Page 12 - 13	Travel & Luggage	Page 33	Sheepskin Boots
Page 14 - 17	Wallets	Page 34	Sheepskin Accessories
Page 18	Womens Belts	Page 35	Chamois Leathers
Page 19	Mens Belts	Page 36- 38	Sheepskins & Hides
Page 20 - 21	Childrens	Page 39 - 40	Mens Coats
Page 22	Mens Hats	Page 41 - 43	Womens Coats
Page 23	Womens Hats	Page 44	Packaging
Page 24	Scarves		
Page 24 - 27	Womens Gloves & Mittens		
Page 28	Mens Gloves		

T R A D E S H O W S

We're looking forward to be able to see all of our customers again with the return of trade events later this year!
We will be exhibiting at Autumn Fair this year, come along and see the exciting new range of slippers as well as our new 2021 leather goods.

AUTUMNFAIR

5th - 8th September 2021
Hall 8 Stand: B32 / C33

SPRING
FAIR

6th - 10th February 2022
Hall 2 Stand: L21

The
Footwear
Industry Awards 2019

Winner

Accessory Brand Of The Year 2019

The
Footwear
Industry Awards 2020

HIGHLY
COMMENDED

*Accessory Brand Of The
Year 2020*

ORDERING



ONLINE

You can view the entire product range online at www.ectrade.co.uk. Once registered you can also place orders. Alternatively, clicking on any products within the brochure will take you to the website to view/order them via our trade website.

When your order has been received you will be contacted for pro forma payment or added to your credit account.



EMAIL

Please email your order to sales@ecleather.co.uk



PHONE

Our friendly office team will happily take your order over the phone. Please give them a call on 01225 865317.

PAYMENTS

We accept payments by:

- Cheque
- Bank transfer
- Debit card

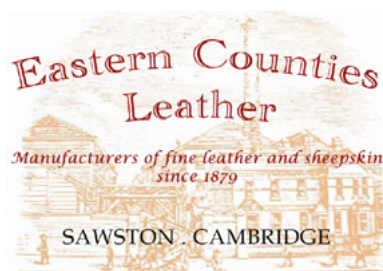
TERMS

All orders over £200.00* are carriage paid, any orders under this value will be subject to a £10.50* carriage charge.

No other minimum order requirements apply (unless specified).

All prices are subject to VAT where applicable.

* Based on UK standard deliveries: Please note Isle of Wight, Northern Ireland and Highland & Islands will also incur a surcharge.



EASTERN COUNTIES LEATHER
PORTOBELLO LANE, SAWSTON
CAMBRIDGE, CB22 3FA

MADISON £8.95



Turquoise/Ivory

- 11 credit card slots -
- Note sections -
- ID window -
- Flat zip purse on reverse -
- RFID -
- Size: 15.5 x 9cm



Purple/Fuchsia

ROSEMARY £9.00



Fuchsia

- 6 credit card slots -
- Note sections -
- Long slip pocket -
- Zip coin section -
- RFID -
- Size 16.5 x 9 cm



Violet



Aqua



Black

HAYLEY £8.95



Taupe/Pink

- 10 credit card slots -
- 2 ID windows -
- Zip coin purse on reverse-
- Note sections -
- Size: 16 x 9cm



Violet/Jade



Pink/Stone

ADIBA £8.95



Purple/Pink

- 11 credit card slots -
- ID window -
- Zip coin purse on reverse-
- Note sections -
- Size: 18 x 10cm



Black/Ochre

ANDRIA £8.75



Pink/Blush



Shadow/Turquoise

11 credit card slots -
ID window -
Zip coin purse on reverse-
Note sections -
RFID -
Size: 16.3 x 9cm

SAVANNAH £9.75



Aqua/Light Grey



Ivory/Rose



Purple/Fuchsia

11 credit card slots -
ID window -
Zip coin purse on reverse-
Note sections -
RFID -
Size: 16 x 9.5cm

FERNE £8.95



Taupe/Watermelon



Cranberry/Cloud

10 credit card slots -
2 ID windows -
Zip coin purse on reverse-
Note sections -
Size 16 x 9cm:

ALIMA £7.95



Grey/Pink



Purple/Cream



Black/Mustard

7 credit card slots -
ID window -
Zip coin purse -
Note section -
Size: 12 x 9cm

NINA £7.95



Black/Purple



Black/Jade

- 5 credit card slots -
- Fits iPhone -
- Magnetic fastening -
- Zip pocket -
- Detachable wrist strap -
- Size: 17 x 8cm

LOIS £8.95



Sapphire



Pink



Jade



Black

- 10 credit card slots -
- Slip pockets -
- Note section -
- Zip around coin purse -
- Size: 14.5 x 10cm

RACHEL £8.75



Teal/Ivory



Black/Red

- 13 credit card slots -
- ID window -
- Zip coin purse on reverse -
- Note sections -
- Size: 18 x 10cm

SOFIA £9.50



Black/Ivory



PinkNavy

- credit card slots -
- ID window -
- Zip coin purse on reverse -
- Note sections -
- Size: 16 x 9cm

VALERIE £7.95



Pink/Blush



Ivory/Rose



Black/Light Grey

- 8 credit card slots -
- ID window -
- Magnetic fastening -
- Zip coin pocket -
- RFID -
- Size: 16 x 9.5cm

NELLIE £6.75



Fuchsia/Navy



Ivory/Purple



Teal/Ivory

- Purse pouch -
- Inside card slots -
- Fits iPhone -
- Front pocket -
- Zip fastening -
- Size: 17.5 x 10cm

CASEY £7.95



Teal/Ivory



Purple/Pink

- 8 credit card slots -
- Note sections -
- Slip pockets -
- Zip around purse on reverse -
- Size: 12.5 x 9 cm

RITA £9.50



Blue/Ivory



Ivory/Blue



Rose/Vanilla

- 6 credit card slots -
- ID window -
- Note section -
- Zip coin pocket -
- Slip pocket on rear -
- Size: 18 x 9cm

SABRINA £9.75



Purple/Fuchsia



Fuchsia/Light Grey

- 9 credit card slots -
- ID window -
- Note section -
- Zip around purse on reverse -
- RFID -
- Size: 16 x 9.5cm

TAMMY £6.95



Slate Blue/Ivory



Pink/Ivory

- Slim-line purse -
- 6 credit card slots -
- Note section -
- Zip coin pocket -
- RFID -
- Size: 11 x 9.5cm

LUNA £8.50



Grape/Rose



Light Grey/Turquoise



Aqua/Blush

- 6 credit card slots -
- Note section -
- Zip coin pocket -
- RFID -
- Size: 14.5 x 11cm

KAMILA £8.95



Ivory/Rose



Violet/Ivory



Black/Fuchsia

- 6 credit card slots -
- Note section -
- 2 x ID windows -
- Zip coin purse on reverse -
- RFID -
- Size: 14 x 9 cm

CONNIE £7.95



Jade/Foil

13 credit card slots -
ID window -
Note section -
Flat zip pocket on rear -
Size: 16 x 9cm



Red/Foil

IMOGEN £8.95



Red

10 credit card slots -
ID window -
Note section -
Zip around purse on rear -
Size: 16 x 9cm



Black

DIVA £7.95



Grey/Ochre

11 credit card slots -
ID window -
Zip coin purse on reverse -
Note sections -
Size: 13 x 9.5cm



Purple/Turquoise



Navy/Pink

UNA £8.95



Black/Ochre

7 credit card slots -
ID window -
Note section -
Zip around purse on rear -
Size: 14 x 9.5cm



Black/Rose



Black/Jade

DONNA £7.95



Pink/Purple

- 11 credit card slots -
- Note sections -
- ID window -
- Flat zip pocket on reverse -
- Size: 16 x 9cm



Purple/Ivory

ISOBEL £7.95



Purple/Turquoise

- 5 credit card slots -
- Note sections -
- ID window -
- Front zip coin pocket -
- Size: 12 x 9.5cm



Pink/Cream



Black/Daquiri

ROSSA £6.00 PER 3 PACK



Aqua



Violet



Fuchsia



Black

- Sold in 3 pack per colour -
- Flat credit card holder -
- 4 credit card slots -
- Middle slip pocket -
- RFID -
- Size: 9.5 x 7.5 cm

KARLIE £8.95



Black/Daquiri

- 12 credit card slots -
- Zip coin pocket -
- ID window -
- Note sections -
- Size: 19 x 10cm



Navy/Pink

LEONA £23.95



Petrol



Grey



Merlot



Black

2 x detachable straps -
Shoulder strap and cross body strap -
Front magnetic pockets -
Zip fastening -
Inside pockets -
Size: 36 x 28 cm

NOA £23.50



Blush



Rose



Light Grey



Navy



Black

Single carry handle -
Detachable shoulder/cross body strap -
Front magnetic flap fastening -
Inside pocket -
Size: 25.5 x 21.5 x 8 cm

NADIA £20.00



Aqua



Red



Black

Zip fastening -
Adjustable strap -
Internal pockets -
Front pocket detail -
Size: 29 x 23.5 cm

YVIE £21.50



Navy



Black

Adjustable shoulder strap -
Front zip pocket and slip flap pocket -
Inside pocket -
Centre divider -
Size: 29.5 x 25 cm

KATRINA £25.50

- Single carry handle -
- Detachable shoulder/cross body strap -
- Front magnetic flap fastening -
- Inside pocket -
- Size: 28 x 25 x 8 cm



Ivory/Tan



Grape/Ivory



Black/Ivory

JANICE £20.25

- Laser cut panel detail -
- Adjustable shoulder/cross body strap -
- Magnetic flap fastening -
- Internal pockets -
- Zip pocket on reverse -
- Size: 24 x 24.5 x 4 cm



Slate Blue



Navy/Blush



Ivory/Rose



Navy



Black

ALICE £25.00

- Twin tote style handles -
- Inside zip pockets -
- Magnetic fastening -
- Size: 30 x 25 x 6 cm



Navy/Ivory



Light Grey/Blush

PETRA £22.75

- Twin backpack style straps -
- Back zip pocket -
- 2 sections -
- Inside pocket -
- Size: 23 x 25 cm



Cranberry



Aqua



Black

AIMEE £17.25



Pink



Grey



Navy



Black

- Zip fastening -
- Rear zip pocket -
- Adjustable strap -
- Internal pockets -
- Size: 24 x 23.5cm

VERITY £25.00



Aqua



Black

- Tote style handles -
- Cross body detachable strap -
- Front slip pocket -
- Inside pockets -
- Back zip pocket -
- Size: 35 x 22 cm

LYDIA £16.00



Navy/Stone



Black/Stone

- Zip fastening -
- Magnetic flap fastening -
- Adjustable strap -
- Internal pockets -
- Size: 25 x 17.5cm

POLLY £25.00



Navy/Pink



Charcoal/White

- Tote style -
- Twin handles -
- Inside pocket -
- Front zip pocket detail -
- Size: 38 x 30 cm

CLEO £13.00



Blush



Ivory



Slate Blue



Rose



Light Grey



Navy

Adjustable crossbody/shoulder strap -
Magnetic fastening -
Internal pockets -
Size: 21.5 x 13 x 3cm

MELODY £21.00



Grape



Ivory/Tan



Black

Adjustable crossbody/shoulder strap -
Magnetic fastening -
Internal pockets -
Zip pocket on reverse -
Size: 20 x 21.5 x 7cm

HELEN £19.50



Ivory/Tan



Navy/Light Grey

Adjustable crossbody/shoulder strap -
Zip around 'boxy' bag -
Internal pockets -
Zip pocket on reverse -
Size: 24 x 18 x 8.5 cm

ROCHELLE £21.00



Blue/Ivory

Adjustable shoulder strap -
Inside zip pockets -
Back zip pocket -
Size: 27 x 20 cm

Colour/print match with our Rita purse.



MORGAN £18.95



Slate



Black

Messenger bag -
Zip pockets -
Internal pocket -
Adjustable strap -
Size:

ECL/MNS £24.95



Black



Brown



Tan

Messenger bag -
2 external zip pockets -
Internal pocket -
Adjustable strap with ID tag -
Size: 24 x 28cm

ECL/MEW £28.95



Tan



Black



Brown

Messenger bag -
2 external zip pockets -
Internal pocket -
Adjustable strap with ID tag -
Size: 34 x 28cm

ECL/H2 £54.95



Brown



Black



Tan

Holdall -
2 x external zip pockets -
Adjustable shoulder strap & carry handles -
ID tag -
Size: 55 x 33 x 20cm

ROSS £25.95



Tan

- Backpack -
- Zip pocket -
- Internal pocket -
- Adjustable twin straps -
- Distressed finish -
- Size:

JOEY £26.95



Tan

- Mono strap backpack -
- Zip pocket -
- Internal pocket -
- Distressed finish -
- Size: 35 x 19cm

JAMIE £10.00



Brown

- Washbag -
- Hanging loop -
- Zip fastening -
- Distressed finish -
- Size:

JACOB £29.95



Tan

- Messenger bag -
- 2 external zip pockets -
- Internal pocket -
- Adjustable strap -
- Distressed finish -
- Size: 37.5 x 27cm

HUGH £51.95



Tan

- Holdall -
- 2 x external zip pockets -
- Inside pocket -
- Adjustable shoulder strap & carry handles -
- Distressed finish -
- Size: 49cm x 32 x 24cm

ECL/TC £79.00



Brown

Tan

Black

- Trolley case -
- 2 carry handles -
- 4 wheel system -
- 4 Internal pockets -
- External zip pocket -
- Telescopic handle -
- Size 33 x 51 x 24cm

DYLAN £4.95



- Bifold -
- 5 credit card slots -
- Coin pocket -
- Note section -
- RFID -
- Size:

Colours: Taupe, Navy & Black

CARTER £5.95



- Bifold -
- Contrast lining -
- 6 credit card slots -
- Note section -
- RFID
- Size: 11 x 9cm

Colours: Navy/Green & Black/Red

ISAAC £6.50



- Trifold -
- 10 credit card slots -
- Note section -
- Coin pocket -
- Size:

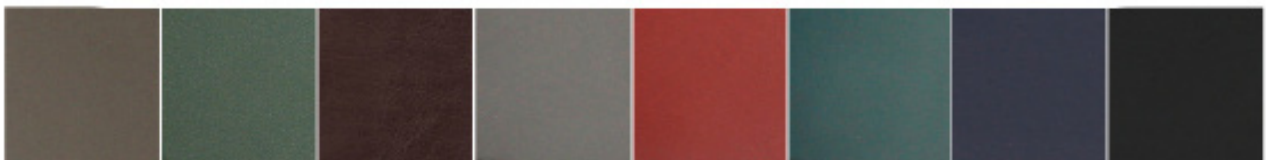
Colours: Brown , Black & Navy

HARRY £6.25



- Bifold -
- 15 credit card slots -
- Note section -
- ID window -
- RFID -
- Size: 11.5 x 9.5cm

Colours: Black & Navy



Taupe Green Brown Shadow Red Teal Navy Black

GRAYSON £7.00

- Bifold -
- Contrast lining -
- 7 credit card slots -
- Note section -
- Coin pocket -
- ID window -
- RFID -
- Size: 11 x 9cm



Colours: Black/Red & Navy/Green

ARLEN £4.95

- Bifold -
- 8 credit card slots -
- Note section -
- RFID -
- Size: 11 x 9cm



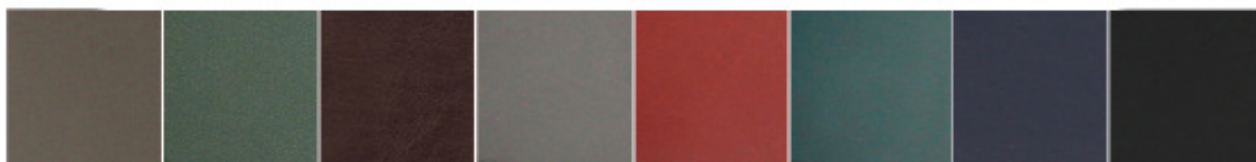
Colours: Black/Shadow, Shadow/Red & Navy/Teal

ELIJAH £4.95

- Bifold -
- 8 credit card slots -
- Note section -
- RFID -
- Size: 11 x 9cm



Colours: Navy/Grey & Black/Taupe



Taupe Green Brown Shadow Red Teal Navy Black

MAX £5.95



- Trifold -
- ID window -
- 7 credit card slots -
- Note section -
- Coin pocket -
- RFID -
- Size: 11 x 9cm

Colours: Black/Taupe & Navy/Grey

SIMON £6.50



- Bifold -
- 15 credit card slots -
- Note section -
- ID window -
- Size: 11 x 9.5cm

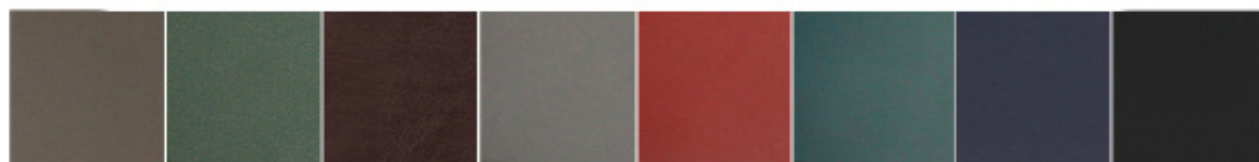
Colours: Black, Brown & Navy

ANDREW £6.50



- Trifold -
- ID window -
- 7 credit card slots -
- Coin pocket -
- Note section -
- RFID -
- Size: 12 x 9.5cm

Colours: Black/Grey & Brown/Taupe



Taupe

Green

Brown

Shadow

Red

Teal

Navy

Black

MARK £6.25



- Trifold -
- 8 credit card slots -
- Note section -
- Coin pocket -
- Size: 12 x 9cm

Colours: Brown, Black & Navy

TOM £5.25



- Bifold -
- 6 credit card slots -
- Note section -
- Money clip -
- RFID -
- Size: 10.5 x 8.5cm

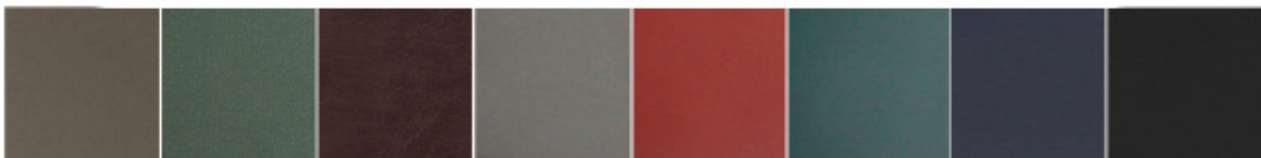
Colours: Slate, Navy & Black

MILES £3.95



- Glasses case -
- Front pocket -
- Stud fastening -
- Size: 17.5 x 8cm

Colours: Black/Taupe & Navy/Grey



Taupe Green Brown Shadow Red Teal Navy Black

SIZE GUIDE

10: 27" - 30" 12: 30" - 33" 14: 33" - 36" 16: 36" - 39" 18: 39"- 42"

NLB01 £6.00 - Sizes 10 - 18
- Width: 2.9cm



Colours
Tan, Burgandy, Red
& Brown

NLB02 £4.00 - Sizes 10 - 18
- Width: 2cm



Colours
Navy, Red, Brown,

NLB03 £4.00 - Sizes 10 - 18
- Width: 2.3cm



Colours
Fuchsia, Tan, Brown
& Black

NLB04 £7.25 - Sizes 10 - 18
- Width: 3.8cm



Colours
Black, Brown & Tan

ALESSIA £5.65

(HF/LB3967)

- Sizes: 10-18
- Width:



Colours
Burgundy, Olive, Tan & Black

CLARA £6.95

(HF/AM10)

- Sizes: 10-18
- Width:



Colours
Tan, Burgundy,
Brown & Black

SIZE GUIDE

S: 28" - 32" M: 32" - 36" L: 36" - 40" XL: 40" - 44" XXL: 44" - 48"

RRB25 £7.50

- Sizes: S - XXL
- Width: 3.4cm

Colours
Black



RRB55 £6.00

- Sizes: S - XXL
- Width: 3.2cm

Colours
Black
Dark Brown
Cognac



COLE £7.50

HF/VM2125

- Sizes S - XXL
- Width:

Colours
Tan
Dark Brown
Navy
Black



CONNOR £7.00

HF/SL02

- Sizes: S - XXL
- Width:

Colours
Tan
Dark Brown
Navy
Black



ACCESSORIES

KIKO £7.95
CSS?EM



Suede with sheepskin lining
- Size: One size
- Grey, Pink, Chestnut

C/NSOLE £0.75



- Size: 8 - 9, 10 - 11
12 - 13, 1 - 2
- Lambswool blend
- Latex backing
can be trimmed to size

MITTENS



CPM £3.50
- Size: One size
- Chestnut, Chocolate, Grey, Sand, Pink, Purple



CPM/T £3.95
- Size: One size
- Chocolate, Sand, Pink, & Purple



CSM £4.25
- Size: One size (age 4-7)
- Sand, Chocolate, Grey, Chestnut, Pink, Purple
TSM £4.25
- Size: One size (older child)
- Tan/Natural
- Tan/Toned

SOFT TOYS



LARRY

Size: 12.5 x 15cm

5 pack £2.25 each
60 pack £2.00 each



DOLLY

Size: 16 x 9cm

5 pack £2.95 each
60 pack £2.65 each



BLUEBELL

Size: 21.5 x 25cm

5 pack £2.50 each
48 pack £2.25 each



WILBUR

Size: 12.5 x 13cm

Made from plush polyester fibres. Suitable from age 3+

size guide: XS -10.5cm, S-11.5cm, M-12.5cm, L-13.5cm XL- 14.5cm)
 Approximate age (XS : 0-3m, S:3-6m M:6-12m L:12-18m XL-18.24m)

BOOTIES

Double face sheepskin booties



CSB £5.50

CSB/T £5.95

ALEX £8.95

FRANKIE £9.95

Soft sole
 Size: XS - XXL
 Colours:
 Beige
 Chestnut
 Grey
 Chocolate

Soft sole
 Size: XS - XXL
 Colours:
 Grey
 Chestnut
 Chocolate

Soft sole
 Size: S - XXL
 Colours:
 Mink
 Tan
 Camel

Rubber sole
 Size: L - XXL
 Colours:
 Camel
 Mink
 Tan

CHARLIE £22.95



Pink



Chestnut Chocolate Grey Black

Double face sheepskin with EVA sole.
 Reinforced suede heel
 Sizes Infant 6 - Junior 1

Limited availability on some sizes in some colours.
 Please check website for up to date stock.

COCO £22.95

COMING SOON



Purple



Chestnut Grey Chocolate Black

Children's suede and Berber fleece slipper boots.

Double face sheepskin with EVA sole.
 Reinforced suede heel
 Sizes Infant 6 - Junior 2

Limited availability on some sizes in some colours.
 Please check website for up to date stock.

NEWTON £18.95



- Sheepskin lining
- Nappa finish
- Brick Forest
 - Size M - L
- Dark Brown Forest
 - Size M - XL

ROYSTON £6.95
MSS/EM



- Suede outer
- Sheepskin lining
- Size: One size
- Chestnut, Brown & Black

CAXTON SUEDED £22.95



- Double face sheepskin
- Size: M - XL
- Tan, Vizon, Brown/Brown

CAXTON AVIATOR £17.95



- Sheepskin lining
- Nappa finish
- Size: M - XL
- Dark Brown Forest

HEYDON £19.95



- Sheepskin lining
- Nappa finish
- Dark Brown Forest
 - Size: M-L
- Dark Brown Nappa
 - Size M-XL

HARRISON £18.95



- Sheepsin lining
- Nappa finish
- Size: XL
- Dark Brown Forest

SHELFORD £19.95



- Sheepskin lining
- Nappa finish
- Size: M & L
- Dark Brown Forest

MEGAN £7.95
SS/EM



- Size: One size
- Brushwood, Chestnut, Vole, Tan, Chocolate, Black, Black/Tipped & Brown/Tipped, Raspberry

BOURN £23.95



- Double face sheepskin
- Size: M & L
- Tan, Vizon & Brown/Tipped

KATE £18.95



- Sheepskin trim / Suede top
- Size: M & L
- Black & Brown

FERGIE £15.95



- Sheepskin headband
- Size: One Size
- Natural Tipped, Black & Brown

DIANA £19.95



- Full sheepskin
- Size: M & L
- Black, Brown & Natural Tipped

DUXFORD £22.75



- Double face sheepskin
- Size: M & L
- Brown/Tipped, Vizon & Tan

MORITZ £18.95



- Sheepskin trim/ Suede top
- Size: M & L
- Black

SCARLETT £4.75

- Size: 175 x 68 cm
Pashmina-style scarf



Apple



Heather



Slate

GERI £3.25



Wool-blend gloves
- Size: One size
- Grey, Fuchsia, Purple,
Wine & Black

GISELLE £3.50



- Synthetic
- Size: One Size
- Camel, Brown, Wine, Navy,
Grey, Black

GABY £3.70



- Synthetic
- Size: One Size
- Caramel, Toffee, Grey,
Cranberry, Teal, Navy, Blush,
Duck Egg & Black

LSG/CT £5.95



- Toscana Sheepskin
- Size: S - XL
- Black & Brown

LSG/AWO £5.95 / £10.50



- Sheepskin
- Size: S - XL
- Mixed Autumnal £5.95
- *Set colours £10.50
- Beige, Coffee & Tan

L/GLITT £5.95



- Sheepskin
- Size: M - L
- Beige, Black, Brown, Tan & Camel

LSG/SP £5.95



- Sheepskin
- Size: S - XL
- Mixed Autumnal colours

LSG/V £5.95



- Sheepskin
- Size: S - XL
- Black, Brown, Tan, Camel & Beige

LSG/LC £10.50



- Sheepskin
- Size: S - XL
- Tan, Coffee & Black

LSG/C £7.95



- Sheepskin
- Size: S - XL
- Spice, Tan, Coffee

LSG £10.50



- Sheepskin
- Size: S - XL
- Coffee, Tan, Grey, Camel & Black

LSM £4.50



- Sheepskin
- Split seam
- Size: One size
- Mixed Autumnal colours

LSMT £4.95



- Sheepskin
- Toscana cuff
- Size: M & L
- Mixed Autumnal colours

LSM/G £3.50



- Sheepskin
- 4 panel seam
- Size: M & L
- Mixed Autumnal colours

LFH £10.95



- Sheepskin
- Size: One size
- Tan, Berry, Black, Cocoa, Russet, Rusty Briza, Brown/Tipped, Brown/Tone, Mink & Dark Brown Nappa

HATTIE £6.95



- Leather
- Size: S - XL
- **Shades of:** Red, Grey, Tan, Burgundy & Brown

DEBBIE £9.25



- Leather / faux trim
- Size: S - XL
- Black, Grey & Cranberry

MABEL £6.95



- Nappa finish
- Sheepskin lined
- Size: One size
- Purple, Navy, Black

LCDG £7.95



- Crochet/leather driving glove
- Size: S/M & M/L
- Tan

SERENA £9.25



- Leather
- Size: S - XL
- Grey, Red, Navy, Brown & Black

POPPY £9.95



- Leather
- Size: S - XL
- Grey Navy, Black

TESS £8.95



- Leather
- Size: S - XL
- Taupe, Navy, Red, Black & Brown

THEA £9.25



- Leather
- Size: S - XL
- Black, Navy, Oxblood & Elephant

CAROLINE £9.25



- Leather
- Size: S - XL
- Black & Grey

HOPE £9.95



- Leather
- Size: S - XL
- Black, Navy, Grey

SADIE £8.95



- Leather
- Size: S - XL
- Elephant/Oxblood, Oxblood/Taupe, Black/Brown, Purple/Purple & Cranberry/Cranberry

SIAN £8.95



- Leather
 - Size: M - XL
 - Brown, Black, Oxblood & Taupe.
- Limited stock available.*

MSG/T £4.95 / £6.95



- Stud/tab detail
- Size: S - XL
- Mixed Autumnal colours £4.95
- Set colours £6.95
Black, Brown & Tan

MSG £11.50
MSG/SP £6.95



- 3 point stitch detail
- Size: S - XL
- Tan, Coffee & Black £11.50
- Mixed Autumnal £6.95

MCDG £8.95



- Crochet back driving glove
- Size: M/L & L/XL
- Tan

CHARLES £9.25



- Contrast piping trim
- Leather
- Size: S - XL
- Black/Burgundy
Brown/Burgundy

ANDY £9.25



- Quilted material / Leather
- Size: S/M & L/XL
- Black

ANTON £9.25



- Stud fastening tab
- Leather
- Size: S - L
- Black & Brown

M2195 £9.25



- 3 Point stitch with cuff
- Leather
- Size: S - XL
- Black & Brown

ROBERT £9.25



- 3 Point stitch
- Leather
- Size: S - L
- Black & Brown

M2194 £9.25



- Stud fastening tab
- Leather
- Size: S - XL
- Black & Brown

TOBY £9.25



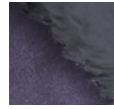
- Elasticated cuff
- Leather
- Size: S - XL
- Black & Brown

WILLOW £10.95
NEW LWMI/S



Stone/
Natural

- Suede upper
- Wool-blend lining
- Hard TPR sole
- Size: 3 - 8



Navy/
Navy



Blush/
Blush

LSMI SOFT SOLE £11.80
LSMI/S HARD SOLE £12.00



Camel

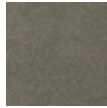
- Suede uppers
- Sheepskin lining.
- Soft suede sole / Hard TPR sole
- Size: 3 - 9

FFION £10.95
NEW



Aqua

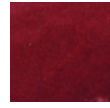
- Suede upper
- Fabric lining
- TPR sole
- Size: 3 - 8



Grey



Blush



Wine

LWMI £7.80



Camel

- Suede upper
- Wool-blend lining & collar
- Soft suede sole
- Size: 3 - 9



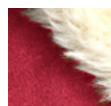
Pink

ZOE £7.25

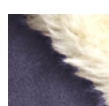


Chestnut

- Suede upper
- Plush fabric lining
- TPR sole
- Size: 3 - 9



Crimson



Navy

BETHANY £10.95
NEW



Pink

- Suede upper
- Berber fleece lining
- TPR sole
- Size: 3 - 8



Blue



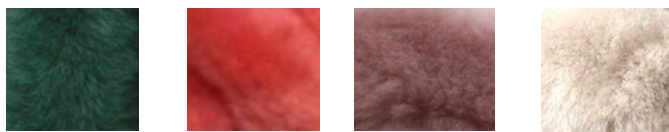
Stone

DELILAH £16.95

NEW
Sheepskin cross over slider
TPR sole
Size 3 - 9



Leopard



Marine Watermelon Pink-Mink Oyster

MAEVE £15.95

(ECL979)
Sheepskin toe-post flip flop
TPR sole
Size: 3 - 9



Navy



Rose Grey Apricot

GRACE £16.95

(ECL939)
Suede uppers with sheepskin lining and cuff feature.
- TPR sole
- Size: 3 - 9



Pink



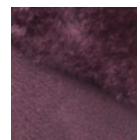
Truffle Chestnut Leopard

ECL969 £18.95

Full sheepskin and soft suede sole
- Size: 3 - 9



Mink



Plum

ELENA £19.95

(ECL929)
Suede uppers with sheepskin lining and collar.
TPR sole
- Size: 3 - 9



Truffle



Mushroom Chestnut Wine / Blush

GWMI £7.80



Dark Camel

- Suede upper
- Wool-blend lining
- Soft suede sole
- Size: 3 - 15



Brown Navy

JOEL £10.95
NEW GWM/S



Chestnut

- Suede uppers
- Wool-blend lining
- TPR sole.
- Size: 6-12



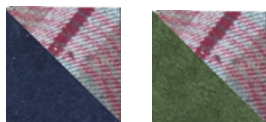
Grey Navy

HARRIS £10.95
NEW



Truffle

- Suede uppers
- Plaid fabric lining
- TPR sole
- Size: 6 - 12



Navy Olive

OWEN £11.95
NEW



Olive

- Suede uppers
- Leather trims
- Berber fleece lining
- TPR sole
- Size: 6 - 12



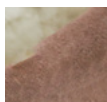
Chestnut Navy

GSMI SOFT SOLE £11.80
GSM/S HARD SOLE 12.00



Brown

- Suede upper
- Sheepskin lining
- Soft suede sole / TPR sole
- Size: 6 - 15



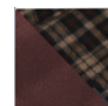
Dark Camel

GLOF/S £14.95



Navy

- Leather upper
- Plaid fabric lining
- Rubber sole
- Size: 5-11



Brown

ELLIS £18.95
NEW

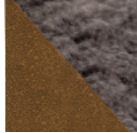


Olive / Natural

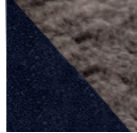
- Suede upper
- Sheepskin lining
- Contrast tab
- TPR sole
- Size: 6-12



Chestnut/
Natural



Chestnut/
Tipped



Navy/
Tipped

AVI £20.95
NEW (UPDATED EVA002)

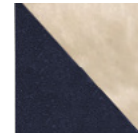


Chestnut/
Natural

- Suede upper
- Sheepskin lining
- TPR sole
- Size: 6 - 12



Truffle/
Natural



Navy/
Natural

ECM003 £22.95



Chocolate/Brown

- Full sheepskin
- Bound edges
- Soft suede sole
- Size: 6 - 11



Chestnut/Natural

ECM002 £16.95

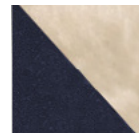


Chestnut/Natural

- Suede upper
- Sheepskin lining
- Soft suede sole
- Size: 6 - 10



Chocolate/
Brown



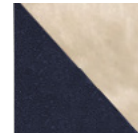
Navy/
Natural

DAVID £14.95
NEW



Chestnut/Natural

- Suede upper
- Berber Fleece lining
- TPR sole
- Size: 6 - 12



Navy/Natural



www.ecltrade.co.uk

To see our full range of slippers including clearance lines.

FREYA £34.95



- Double face sheepskin
- EVA sole
- Size: 3 - 9
- Purple, Chocolate, Chestnut & Black



JODIE £37.95



- Double face sheepskin
- EVA sole
- Size: 3 - 9
- Grey, Chestnut, Chocolate, Purple & Black



LACEY £37.95



- Double face sheepskin
- EVA sole
- Size: 3 - 9
- Chestnut, Chocolate, Grey, Purple & Black



LARA £45.00



- Double face sheepskin
- EVA sole
- Size: 3 - 9
- Black & Chestnut



JAKE £45.00



- Aviator finish
- Double face sheepskin
- EVA sole
- Size: 7 - 12
- Chocolate Aviator

L/INSOLE £0.90 / £1.00
 Lambswool insole with latex backing
 - Size: 3 - 12 / 13 - 15
min qty 5 per size



C/INSOLE £0.75
 Lambswool-blend insole with latex backing
 - Size: 8-9 , 10-11
 12-13 & 1-2
no min qty

SHEEPSKIN INSOLE £3.95
 Sheepskin insole with felt backing.
 - Size: 3 - 12

Includes Kraft pillow box packaging with "feel" hole.



S/INSOLE £2.95
 Sheepskin insole with raw skin backing. Packaged in polybag

S/DUST £1.65



Sheepskin duster
 - Size: 2 ft
 - Natural

SPM £3.95



Sheepskin polishing mitten
 - Elasticated cuff
 - Size: One size
 - Natural, Black & Grey

SBC £4.95



Sheepskin seat belt cover
 - Size: 28cm
 - Black, Natural, Grey & Pink

SSCC £37.95

Sheepskin car seat cover with:
 - Universal fittings.
 - Fabric backing
 - Natural
 - Grey
 - Black



Sold individually
 Colour migration may occur from the backing fabric on light coloured seats

SWC £5.95



Sheepskin steering wheel cover
 - Size: One size
 - Black, Beige, Grey & Pink

C/PAD/S



Chamois demisting pad
 - Size: 12 x 8 x 4cm
 Min qty 10 pcs: £0.42 each (unbagged)
 Min qty 10 pcs: £0.45 each (bagged)
 Carton rate (250pcs) £0.37 each (unbagged)
 Carton rate (250pcs) £0.40 each (bagged)

C/PAD/M



Chamois demisting pad
 - Size: 16 x 11 x 5cm
 Min qty 10pcs: £0.65 each (unbagged)
 Carton rate (200pcs) £0.58 each (unbagged)

CHAMOIS LEATHER

sizes are approximate

- Small - 1.5 sq ft £1.30 (NECK)
- Medum - 2.5 sq ft £2.15 (RECTANGULAR)
- Large - 3.5 sq ft £3.00 (FRENCH CUT)
- XL - 4.0 sq ft £3.85 (RECTANULAR)



French cut shown

NCC/XXL £4.70



XXL skin shape chamois leather
 - Size: XXL 5.5 sq ft approx

NCC/SUPER £6.50



Super size skin shape chamois leather
 - Size: Super 6.0 sq ft approx

NATURAL

Natural, ivory coloured sheepskin rug. Available in single shape or multiple stitched shape.

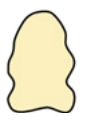


Singles

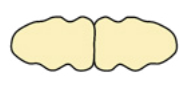
- SSN/S £15.95
- SSN/M £18.95
- SSN/L £23.95
- SSN/XL £26.95
- SSN/SUP £30.95

Multiples

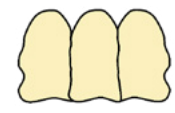
- DSN/L £51.90 (Double)
- TSN/L £77.85 (Triple)
- QSN/L £103.80 (Quad)
- S6N/L £155.70 (Sexto)
- O8N/L £207.60 (Octo)



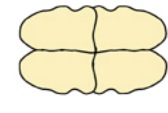
Single



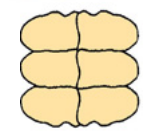
Double



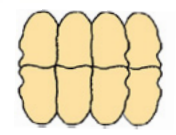
Triple



Quad



Sexto



Octo

RARE BREEDS

Rare breed rugs with natural markings and colouring.

These sheepskins are a natural product therefore all markings and colourings are unique. Images are a guideline of the markings and tones available but we can never guarantee identical colourings in the skin, markings and positioning. All images are below are examples of colouring not definite colouring.



TRADITIONAL

Rare breeds with natural dark/light markings.

- SSRB/S £19.95
- SSRB/M £24.95
- SSRB/L £29.95
- SSRB/XL £33.95
- SSRB/SUP £38.95



NATURAL BROWN

Rare breeds with natural all brown markings.

- SSRB/M £19.95
- SSRB/L £23.95
- SSRB/XL £26.95
- SSRB/SUP £29.95



HILL SHEEP

Rare breeds with predominantly cream markings and natural fleck features

- SSRB/S £12.95
- SSRB/M £14.95
- SSRB/L £16.95



JACOBS

Brown spotted markings from the Jacob sheep breed.

- Singles
- SSJ/S £19.95
 - SSJ/M £23.95
 - SSJ/L £29.95
 - SSJ/XL £32.95
 - SSJ/SUP £35.95

Approximate single sizing: S- 85cm M-90cm L-95cm XL-100cm SUP- 105cm
 These are natural products; sizing, colours and markings will vary

COLOURS

Coloured sheepskin rug.



Singles
 SSC/S £17.95
 SSC/M £21.95
 SSC/L £24.95
 SSC/XL £27.95
 SSC/SUP £32.95
Multiples may be available on request

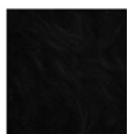
*Approximate sizing: S- 85cm M-90cm L-95cm XL-100cm SUP- 105cm
 These are natural products; sizing, colours and markings will vary*



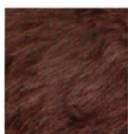
Natural Tipped



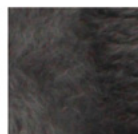
Red Fox



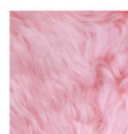
Black



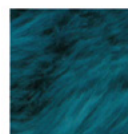
Chocolate



Slate Grey



Baby Pink



Teal

Please note: Due to the nature of the dyeing processes used on coloured skins, some colour migration may occur. Please be aware when using on light coloured flooring or upholstery.

BACKED RUGS

Rug made from natural sheepskin with fabric non-slip backing.

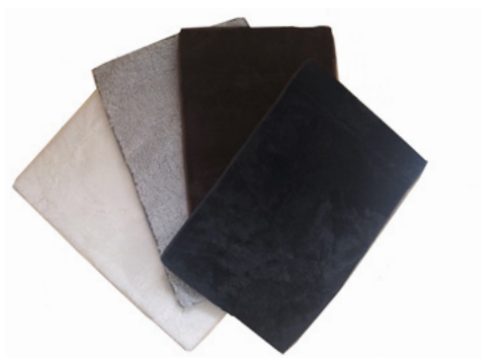
BKN/S £13.95
 BKN/M £14.95



Quilted backing



RSN



Rectangular sheepskin mats with fabric non-slip backing.
 Natural, Black Grey & Brown

51 x 33cm £5.95
 63 x 41cm £7.95
 74 x 48cm £9.95

CSN



Circular sheepskin rug
 - Ivory Black & Brown
 - 100cm £65.00
 - 132cm £85.00

R/SKIN



Reindeer skin with natural markings.

XL £85.00
(min length 120cm)

Super Large £100.00
(min length 140cm)

Reindeers are designed to be used as wall hangings.
Shedding may occur.

These are natural products; sizing and colours will vary slightly.

POUFFES £35.00

Sheepskin pouffe with fabric base
Approximate size: 35cm diameter



Natural Markings



Natural



Cappuccino

R/BRUSH £16.50 PACK/ £1.65 EA



Sheepskin rug brush with metal teeth.
Perfect for cleaning and removing dust and dirt
from sheepskins and sheepskin/wool items.
Ideal for restoring 'fluffiness'

- Size: One size
- Red
- min qty 10

BLENHEIM



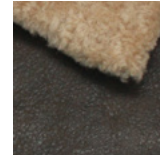
- Length 65cm



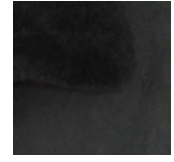
Nutmeg
36" - 50"
£175.00



Dark Brown
Nappa
36" - 50"
£175.00



Dark Brown
Distressed
38" - 50"
£175.00

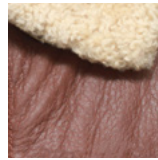


Black/Black
36" - 50"
£195.00

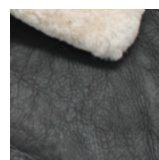
HARVEY



- Length 68cm



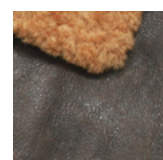
Cognac
38" - 50"
£91.50



Dark Brown
Nappa
38" - 50"
£115.00



Chocolate
Forest
Distressed
36" - 50"
£115.00



Caramel
38" - 50"
£115.00

GILES £60.00



- Length 69cm

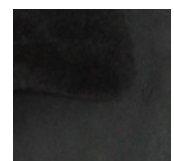


Chocolate
Forest
38" / 40" / 44"

CHRIS £189.95



- Length



Black/Black
36" - 48"

SHAUN



Cognac
38" - 50"
£137.50



Chocolate
Forest
Distressed
36" - 50"
£172.00



Dark Brown
Nappa
36" - 50"
£172.00



Dark Brown
Distressed
40" - 50"
£172.00



Anthracite
38" - 50"
£95.00



Nutmeg
38" - 50"
£172.00

- Length 70cm

JOHN £260.00



Brown Tipped
38" - 46"

- Length 98cm

DEAN £127.50



Chocolate
Forest
36"-48"

- Length 72cm

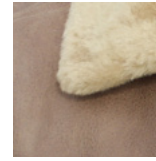
GILLY



- Length 66cm



Chocolate Forest
12 - 20
£95.00



Nutmeg
10 - 20
£95.00

KRISSY £146.00



- Length 64cm



Chocolate Forest
8 - 20

MEPAL



- Length 65cm



Chocolate Forest
12 - 20
£158.00



Caramel
10 - 20
£100.00

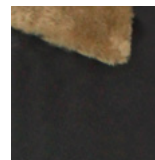


Dark Brown Nappa
10 - 20
£125.00

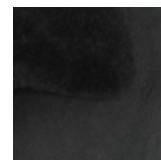
JACINTA



Length 60cm



Caramel
8 - 18
£194.50



Black/Black
10 - 18
£194.50



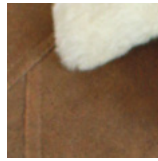
www.ecltrade.co.uk

To see our full range of coats

SUE



- Length 61cm



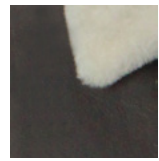
Whiskey
8 - 18
£180.00



Rust Tone
8 - 18
£180.00

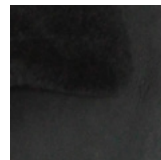


Rusty Briza
8 - 18
£180.00



Cocoa
8 - 18
£180.00

LEXIE £195.00



Black/Black
10-18

ANNABEL £329.00



- Length 125cm
- Brown Hurricane size: 10-20
- Black Hurricane size: 8-20



Brown
Hurricane



Black
Hurricane

Length 81cm -
Size: 10 -16 -
Brown Hurricane -
Black Hurricane

MILLIE £340.00



VICKI £238.00



- Length 86cm
- Size: 10 -18
- Vizon, Brown/T & Tan

CHLOE £195.00



- Length 74cm
- Size: 10 -18
- Tan, Vizon Black/T & Brown

JENNY



- Length 60cm
- Size: As below
- Brown/T, £194.50 10 -18
- Black/T £105.00 12 -18

GILLY £88.00



- Length 64cm
- Size: 10 -20
- Dark Vizon

APRIL £200.00



- Length 77cm
- Size: 10 -20
- Mushroom, Tan & Brown

ANNA £196.00



- Length 78cm
- Size: 10 - 18
- Vizon & Tan

CLAUDE £228.50



- Length 88cm
- Size: 38" - 48"
- Vizon, Brown/Tipped & Tan

EDWARD £238.50



- Length 87cm
- Size: 38" - 48"
- Vizon & Brown/Tipped



**CLEANING
BLOCKS** £1.25

Leather cleaning/restoring blocks. Ideal for maintaining sheepskin coats.



C/PAD/S £0.03

Bags for chamois pads

Size: small

Please specify when ordering if you need bags



PURSE BOX
£0.55

- 3 sizes to accomodate all our purses
small, medium & large
- Niche branding



**GLOVE
BOX** £0.65

- Glove box to accomodate all gloves with acetate window.

MDB

- Moccasin display boxes
'Natural Handcrafted Moccasins'
- Size: 3 - 7 £0.55
- 8 - 12 £0.65

SDB

- Slipper display boxes
'Natural Handcrafted Slippers'
- Size: 3 - 7 £0.55
- 8 - 12 £0.65



Order individually



EASTERN COUNTIES LEATHER

PORTOBELLO LANE, SAWSTON CAMBRIDGE, CB22 3FA

01225 865317 SALES@ECLLEATHER.CO.UK WWW.ECLTRADE.CO.UK