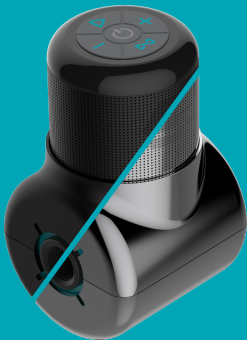




Shower Power Manual



Welcome Note from the Founders

There's really no need to remind everyone how crazy life is right now. We all need a micro-lift... some time to relax, de-stress and even have a bit of fun. Having as little as five minutes of alone time is an easy way to get back on track. For a lot of people, the time you spend in the shower may be the only truly alone time you get all day. Why not make the most of it?!

Enter... Shower Power. A patented Bluetooth speaker that generates all of its power from the water you are already using in the shower. Take a shower while jamming out to your music, listening to your favorite podcast, or relaxing to an audiobook... What's not to like? Shower Power has transformed our daily showers and we know you are going to love using it every day too.

Shower Power integrates seamlessly into your daily routine. We designed it to be effortless to use. Installation is fast and simple. It turns on and pairs automatically. And best of all, you never have to worry about charging it. With Shower Power, you will always have a powerful fully-charged Bluetooth speaker in your shower. We guarantee that your time in the shower will never be the same.

We didn't stop at hydropower. Shower Power is made from recycled ocean plastic. Not to mention, the packaging for Shower Power, and all other Ampere products, is 100% plastic-free.

Before using Shower Power, please read all the instructions and watch our installation videos at install-shower-power.ampere.shop. And, make sure to register your product at register.ampere.shop to lock in the one-year warranty and a \$20 gift card.

Thank you for your support! We'd love to hear what you think about Shower Power. Please email us with any questions, concerns, feedback, etc. at hello@amperetech.co.

Thank you and happy showers!

Chase & Reid

Handwritten signatures of Chase and Reid in black ink. The signature on the left is 'Chase' and the one on the right is 'Reid'.

Specs

Battery: 1800 mAh Lithium Ion

Frequency Range: 100hz-20Khz

Speaker: 40mm x 2

Speaker Power: 3W x 2

Supports Bluetooth®: 5.1

Weight: 520 g.

Size: 158 x 95 x 91mm



360° Sound &
Powerful Bass



Pair Two Together
for Surround Sound



10 Hours of
Battery Power



Remote or
Touchpad
Control



100%
Powered by
Water



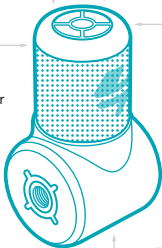
IPX6
Waterproof



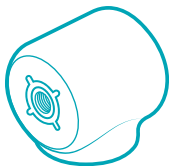
Made from Recycled
Ocean Plastic



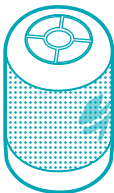
Fits 99% of
Showerheads



What's in the Box



Shower Dock



Droplet
(aka Speaker)



Male-male
Connector



Hex Key



Sealing Tape



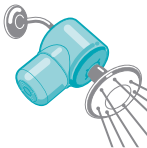
Gaskets
(O-rings)

Quick Start Guide

For more detailed installation instructions and how-to videos, go to install-shower-power.ampere.shop or scan the QR code below.



Before you begin, identify your shower fitting.



Fixed

The showerhead attaches to a fitting that comes straight from the wall at an angle. The fitting is male and the showerhead is female.



Rain

The showerhead attaches to a fitting that comes straight down from the ceiling. The fitting is male and the showerhead is female.

*Installation steps are the same for fixed and rain shower fittings

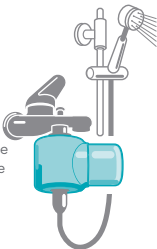


Handheld

The showerhead attaches to a hose that comes from a fitting lower down on the wall. The hose is female and the showerhead is male.

*Tip -

You can install Shower Power on either end depending on your preference. It can be at the base of the hose OR at the end of the hose, attached to the showerhead.



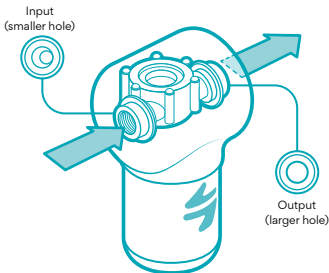
Step 1 - Unbox Shower Power and remove the speaker from the dock

Rotate the speaker 90 degrees counterclockwise to separate it from the dock. Set the speaker and dock aside.

Step 2 - Remove your showerhead from the fitting

Unscrew the showerhead. You can usually do this by hand but may need a pair of pliers if it was installed too tightly.

Step 3 - Install the male-male connector on the appropriate side



Shower Power is not bidirectional so it is critical to determine which side of Shower Power is input and which side is output. There is a sticker that indicates the input side (this can be removed after the first use). For additional confirmation and future checks, the hole on the input side is smaller. As such, the turbine will be more visible on the output side. In addition, there is a small metal sensor on the output side.

Rain and Fixed

For these shower types, the male-male connector will go on the output side (the side that connects to the showerhead). First, screw in the male-male connector by hand and then tighten it with the hex key.

Handheld

For these shower types, the male-male connector will go on the input side (the side that connects to the hose). First, screw in the male-male connector by hand and then tighten it with the hex key.

Step 4 - Connecting your showerhead to the shower dock

Attach your showerhead to the shower dock. Connect securely but don't overtighten. If you noticed that your showerhead/fitting already used sealing tape, you may want to use it at this stage of the installation process.

***Tip for handheld showers**

If the showerhead is not oriented in the direction you want then you can add a rubber O-ring inside the output threads on Shower Power. Use the thinner rings for smaller adjustments and the thicker rings for larger adjustments. You can use multiple if necessary.

Step 5 - Connect shower dock + showerhead to the shower fitting

Finally, connect the shower dock, with the showerhead now attached, to the shower fitting.

***Tip for rain and fixed showers**

If the showerhead is not oriented in the direction you want then you can add a rubber O-ring inside the output threads on Shower Power. Use the thinner rings for smaller adjustments and the thicker rings for larger adjustments. You can use multiple if necessary.

Step 6 - Connect the speaker (aka Droplet Pro) to the shower dock

Align the bump in the underside of the shower dock with the groove on the top of the speaker (Droplet). The Ampere logo will be facing the same direction as flow of water when and you should feel the bump go into the groove. Then, rotate the speaker 90 degrees. You will feel it “lock” into place and the Ampere logo will be perfectly centered along the side of Shower Power.



Congratulations! Now you are ready to rock n' roll.

Troubleshooting

It's leaking! What do I do?

The first thing to check is if you screwed in Shower Power tight enough. The next solution is to try adding rubber O-rings to the female ends of the connection. Another solution is to use the included thread sealing tape to make the connection tighter. Wrap the sealing tape around the threads in a counterclockwise direction for a better seal.

What do I do if Shower Power is not pointed in the direction I want?

If the showerhead is not oriented in the direction you want then you can add a rubber O-ring inside the output threads on Shower Power. Use the thinner rings for smaller adjustments and the thicker rings for larger adjustments. You can use multiple if necessary. You can also use the included thread sealing tape to prevent leakage and screw to your preferred direction.

Using Shower Power

Charging

Hydroelectric Charging:

Charging a Bluetooth speaker has never been easier—all you have to do is take a shower.

Shower Power will charge whenever there is flowing water. Under “normal use conditions,” Shower Power will never need to be charged. We consider “normal use conditions” to be water pressure between 30-50 PSI, water temperature of less than 120°F (50°C), and only using Shower Power while the water is running.

If you use Shower Power without water running, then you will be using the reserve battery power. Continued use will result in needing to use the USB-C port to charge the Shower Power.

USB-C Charging:

Remove Droplet (the speaker) from the Shower Dock and make sure it is completely dry before plugging in. You can charge Droplet with almost any adapter from a reputable brand. Droplet is compatible with QC and PD adapters.

Low Power Notifications:

When the battery level reaches 20% Shower Power will beep three times. When the battery reaches 10% it will beep three times. When you hear this “low battery” sound, we recommend not using Shower Power without water running. Alternatively, you can use the USB-C port to bring it back up to 100%.

Pairing

When Shower Power is turned on, it will enter Bluetooth pairing mode automatically. The “searching sound” will play for one minute but it will remain in pairing mode for three minutes. If no device is paired within three minutes, Shower Power will automatically turn off.

To pair your device, open the Bluetooth pairing tab on your device and select “Shower Power.”

Play your favorite audio from your device. You can pause, play, skip, change volume, etc from your device, via the button pad, or the Shower Power remote control.

Button Pad



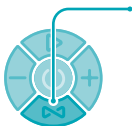
Power Button

1. Hold for two seconds to turn Shower Power on and off.
2. The power button will illuminate green when the battery is charging.
3. The power button will blink blue while in pairing mode.



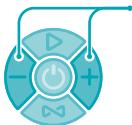
Play Button

1. Single press to pause and play your audio.
2. Hold for two seconds to skip to the next song.



Pairing Button

1. Single press to enter TWS pairing mode.
2. Press and hold for 2 seconds to enter Bluetooth pairing mode.
3. Hold for 10 seconds to clear the Bluetooth pairing history.



+/- Buttons

1. Single press the + and - buttons to increase and decrease volume, respectively, one level at a time.
2. Hold the + and - buttons to "scroll" through the volume levels more quickly.

Shower Power Accessories

Droplet/Droplet Pro

When sold with the Shower Dock, the speaker and Shower Dock together are called Shower Power (and Shower Power Pro). When purchased separately, the speaker component is referred to as Droplet (and Droplet Pro). Regardless of whether you bought the speaker component as part of “Shower Power” or separately, it will work with any Shower Power Shower Dock.

TWS Pairing

Before pairing your device, turn on two Ampere speakers (Droplet, Droplet Pro, Shower Power, Shower Power Pro) and allow the two speakers to connect. When they connect successfully, you’ll hear a pairing sound.

Single press the pairing button to enter TWS pairing mode. After two speakers are connected, single press on one to disconnect it. After disconnecting the TWS, if you would like to re-pair, turn Droplet off and turn on again.

If you are having trouble getting the speakers to connect, make sure that there are no devices nearby that have paired to either speaker. If so, go into your Bluetooth settings and “forget” all

Shower Power-related Bluetooth devices. If you are still having trouble connecting two speakers, hold down the pairing button for ten seconds to reset the Bluetooth pairing settings. You'll hear a "reset" sound. Then, turn off both speakers. Turn them back on and press the pairing button once on both speakers.

Shower Power Remote

The Shower Power remote works just like the button pad on Shower Power itself. If it's hard to reach, the remote allows you to control all the functionality from up to 5 meters away. The only difference is that the power button on the remote does not turn Shower Power on. Shower Power will turn on automatically when water starts to flow.

Cleaning and Care

Just like any showerhead, over time, the Shower Dock may become stained or dirty. This could be a buildup of limescale, or metals and minerals (like iron and manganese), or bacteria. It is fine to clean the Shower Dock with the same cleaners that you use for your showerhead. That could include vinegar, baking soda, or gentle bathroom cleaning spray.

Before you begin, remove the speaker (Droplet) from the speaker dock and set it aside. When cleaning the shower dock, pay close attention when cleaning the inside as not to damage the pogo pins. Be very careful with any cleaning agents around the pogo pins and try to keep them as dry as possible.

To clean the speaker component (Droplet), remove it from the speaker dock and clean with a damp cloth. Do not leave the pogo pin connection wet or submerged in water.

Warnings

This device was tested for typical body-worn operations. To comply with RF exposure requirements, a minimum separation distance of 20mm must be maintained between the user's body and the handset, including the antenna. Third-party belt-clips, holsters, and similar accessories used by this device should not contain any metallic components. Body-worn accessories that do not meet these requirements may not comply with RF exposure requirements and should be avoided. Use only the supplied or an approved antenna.

This device in compliance with the essential requirements and other relevant provisions of Directive 2014/53/EU. All essential radio test suites have been carried out.

CAUTION : RISK OF EXPLOSION IF BATTERY IS REPLACED BY AN INCORRECT TYPE. DISPOSE OF USED BATTERIES ACCORDING TO THE INSTRUCTIONS

The product shall only be connected to a USB interface of version USB 2.0 Adapter shall be installed near the equipment and shall be easily accessible.

The plug considered as disconnect device of adapter

The device complies with RF specifications when the device used at 20mm from your body

This device complies with part 15 of the FCC Rules. Operation is subject to the condition that this device does not cause harmful interference (1) this device may not cause harmful interference, and (2) this device must accept any interference received, including interference that may cause undesired operation.

Changes or modifications not expressly approved by the party responsible for compliance could void the user's authority to operate the equipment.

NOTE: This equipment has been tested and found to comply with the limits for a Class B digital device, pursuant to Part 15 of the FCC Rules. These limits are designed to provide reasonable protection against harmful interference in a residential installation. This equipment generates, uses and can radiate radio frequency energy and, if not installed and used in accordance with the instructions, may cause harmful interference to radio communications. However, there is no guarantee that interference will not occur in a particular installation.

If this equipment does cause harmful interference to radio or television reception, which can be determined by turning the equipment off and on, the user is encouraged to try to correct the interference by one or more of the following measures:

Reorient or relocate the receiving antenna.

Increase the separation between the equipment and receiver.

Connect the equipment into an outlet on a circuit different from that to which the receiver is connected.

Consult the dealer or an experienced radio/TV technician for help.

To maintain compliance with FCC's RF Exposure guidelines, This equipment should be installed and operated with minimum distance between 20cm the radiator your body: Use only the supplied antenna.

This device complies with part 15 of the FCC Rules. Operation is subject to the condition that this device does not cause harmful interference (1) this device may not cause harmful interference, and (2) this device must accept any interference received, including interference that may cause undesired operation

Let's text

Ask us questions, track your orders, get exclusive promotions, and stay up to date with our geeky tech content by signing up to our SMS program. Scan the QR code to swap numbers ;-)



Like Shower Power?

Check out the rest of the Ampere product line at ampere.shop.

Shop innovative tech products from chargers, cables and power banks to one-of-a-kind products like Dusk and Side Pocket.

To get a \$20 gift card to ampere.shop, register your Shower Power now. To register your warranty, text "Shower Power" to +1 617 906-7774 or visit register.ampere.shop or scan here. ▶





AMPERE™

| Fun, Functional Tech |