

TERRAZZO MOSAIC INSTALLATION & CLEANING GUIDE

DECOR 8 TILES



IMPORTANT - PLEASE READ!

The following information is intended as a guide only. Different installations and applications require altered or more detailed specifications. Please consult a professional tiler or your installation product manufacturers to ensure adherence to Australian Standards (AS3958.1-2007, AS3958.2-1992 & AS2358-1990). Please read all instructions and inspect each item carefully prior to installation. Variation to shade, colour, tone and size is an inherent characteristic of all natural and kiln fired products. The installer and end user are responsible for ensuring the product quality, colour consistency and shading are acceptable throughout all boxes prior to installation. No claims regarding variation will be accepted once the product is installed - installation of the product constitutes full acceptance of the goods.



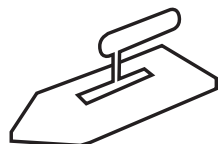
ADHESIVE

Select an adhesive suitable for use with Terrazzo Mosaics and the substrate which you are adhering the tiles to. We recommend consulting the product data sheets and installation recommendations of your preferred adhesive manufacturer carefully. Avoid getting adhesive on the product surface, ensuring to clean all excess adhesive carefully with a damp sponge while it is still wet. Expansion joints should be installed at joints in the substrate, every 3.5 metres, at all 'changes of plane' or direction and where the product abuts a restraining surface (at the junction of all vertical and horizontal surfaces).

Dry lay the product first to check acceptable blend and joint fit.

10% OVERAGE

Measure the area to be tiled and add an extra 10% to allow for breakages, mis-cutting during installation or to replace any sections in the future.



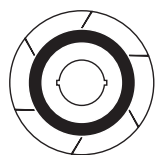
GROUT

Always follow the grout manufacturer's instructions. Only use unsanded or epoxy grout. All tiles should be tested with the grout you are planning on using before installation. This applies in particular to tiles with a crackle glaze or matt finish. It also applies when the tiles will differ greatly in colour from the grout; for example, light coloured tiles with dark grout or dark coloured tiles with light grout. This is because some grouts can leave a residue in the crazing or discolour tiles of a different shade.



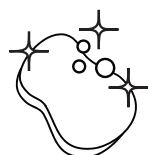
SEALING

This product requires sealing with a quality penetrating sealer prior to, and again after grouting. Sealing will not fully protect your product but will facilitate cleaning, reducing the absorption and helping with ongoing removal of stains providing they are not left for too long. Always follow the sealer manufacturer's recommendations and instructions.



CUTTING

We recommend cutting this product with a wet diamond tile saw equipped with a continuous blade. Always cut in a well-ventilated area away from the installation area using water to suppress dust particles. Eye and hearing protection should always be worn when cutting, drilling or grinding. Use a suitable respiratory particle filter dust mask when cutting, drilling or grinding.



CLEANING

Maintain by cleaning with water and, if needed, a neutral based mild detergent and wiping with a clean soft cloth.

Never use alkaline or acidic cleaning chemicals, or abrasive cleaners as they may damage the surface of your product. If a cleaning chemical is used ensure it is pH neutral.



SUITABILITY

PLEASE NOTE:
Every installation is inherently different. The following application suitability indications are a guide only (non-commercial applications). We recommend you employ the skills and expertise of licensed tiler to install your tiles.

- Interior walls
- Exterior walls
- Interior floors - light traffic
- Exterior floors - light traffic
- Splashback & shower walls
- Wet area floors
- Pools (submerged)
- Countertops

IMPORTANT - CHECK BATCH NUMBERS!

Variation in colour and shade occurs between batches. Batch number shown below.