

# TULA COFFEE TABLE



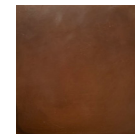
SHOWN IN OAK, CORNSILK MONOCOAT + RUSTY RED PATINA PAIRED WITH EVE CHAIRS

OAK	48"DIA + 15"H	150LBS
ASH	48"DIA + 15"H	150LBS

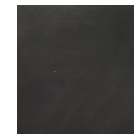
POLY FINISH  
INDUSTRIAL STEEL BASE, PATINA + CLEAR POLY

//DIMENSIONS + FINISHES CUSTOMIZABLE  
price may increase for material/finish change  
for more information. please contact our design team at [info@crofthouse.com](mailto:info@crofthouse.com)

PATINA ALTERNATIVES:



ANTIQU  
BRONZE

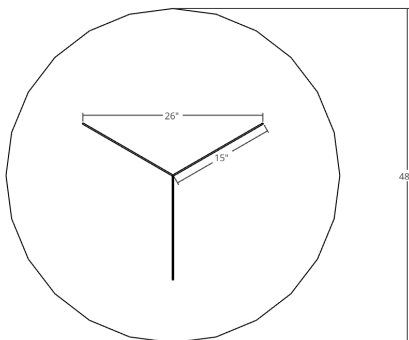


BLACK

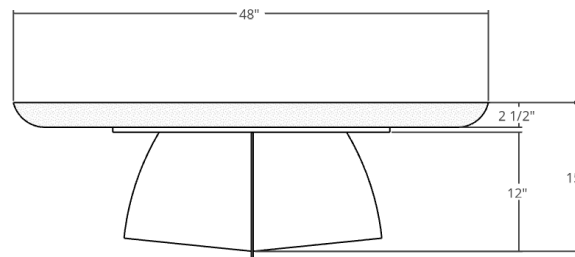


RUSTY  
RED

TOP VIEW



FRONT ELEVATION



326 NORTH LA BREA AVENUE  
LOS ANGELES, CALIFORNIA 90036

323.424.7743  
[WWW.CROFTHOUSE.COM](http://WWW.CROFTHOUSE.COM)



CROFT  
HOUSE