

PALMAS COFFEE TABLE - OVL



SHOWN IN RUSTY RED PATINA

COFFEE TABLE 65"L + 30"W + 15"H 150LBS

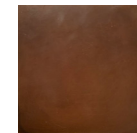
INDUSTRIAL STEEL CASING + PATINA FINISH

//DIMENSIONS + FINISHES CUSTOMIZABLE

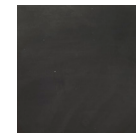
price may increase for material/finish change

for more information please contact our design team at info@crofthouse.com

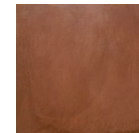
PATINA ALTERNATIVES:



ANTIQUÉ
BRONZE

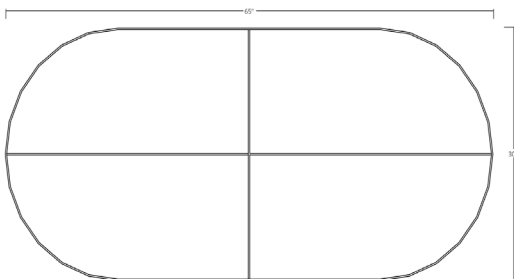


BLACK

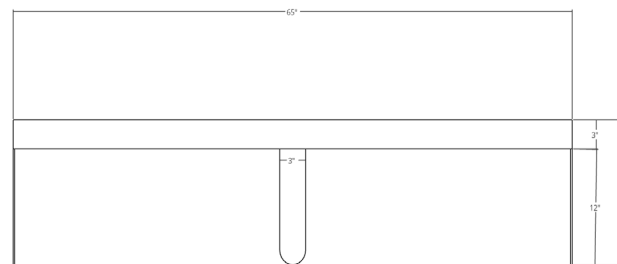


RUSTY
RED

TOP VIEW



ELEVATION



326 NORTH LA BREA AVENUE
LOS ANGELES, CALIFORNIA 90036

323.424.7743
WWW.CROFTHOUSE.COM



**CROFT
HOUSE**