

# KINGS CREDENZA



4-DOOR KINGS CREDENZA IN WALNUT, OIL

6-DOOR	108"L + 20"W + 28"H	420LBS
4-DOOR	80"L + 20"W + 28"H	240LBS
3-DOOR	60"L + 20"W + 28"H	200LBS

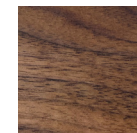
LACQUERED HDF CASING  
 OILED WALNUT DOORS  
 INDUSTRIAL STEEL + POWDER COATED LEGS

## //DIMENSIONS + FINISHES CUSTOMIZABLE

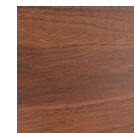
*price may increase for material/finish change*

*for more information please contact our design team at [info@crofthouse.com](mailto:info@crofthouse.com)*

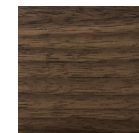
## WALNUT ALTERNATIVES:



OIL



MATTE POLY

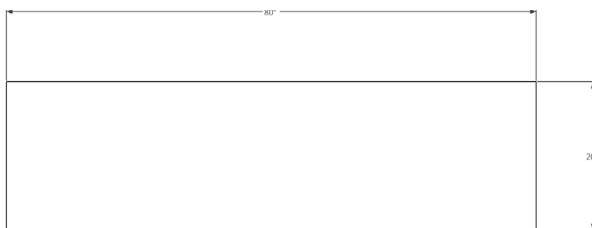


ARDEN, OIL

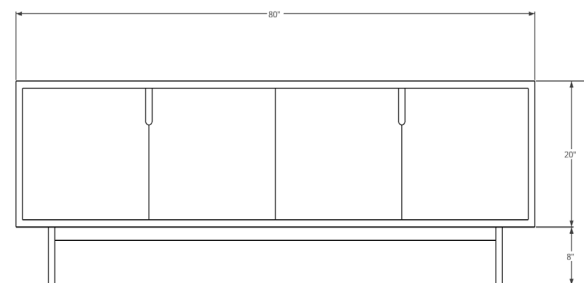


ARDEN  
MATTE POLY

## TOP VIEW



## FRONT ELEVATION



326 NORTH LA BREA AVENUE  
 LOS ANGELES, CALIFORNIA 90036

323.424.7743  
[WWW.CROFTHOUSE.COM](http://WWW.CROFTHOUSE.COM)



**CROFT  
 HOUSE**