

# BRONSON CREDENZA



4-DOOR BRONSON CREDENZA IN CH CHESTNUT LEATHER

4-DOOR 80”L + 20”W + 31”H 220LBS  
 3-DOOR 60”L + 20”W + 31”H 170LBS

BIRCH INTERIOR + LEATHER WRAPPED DOORS  
 INDUSTRIAL STEEL + POLY FINISH CASING  
 INDUSTRIAL STEEL + POWDER COATED LEGS  
 BRASS HANDLES

## //DIMENSIONS + FINISHES CUSTOMIZABLE

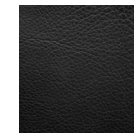
price may increase for material/finish change

for more information please contact our design team at [info@crofthouse.com](mailto:info@crofthouse.com)

## LEATHER ALTERNATIVES:



CH CHESTNUT



ELEGANCE,  
BLACK



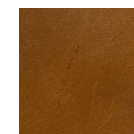
ARIZONA,  
TURQUOISE



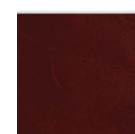
MANCHESTER,  
PEBBLE



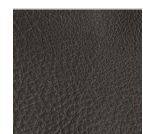
VERMONT,  
HONEY



DARK AMBER



SORRENTO,  
COGNAC

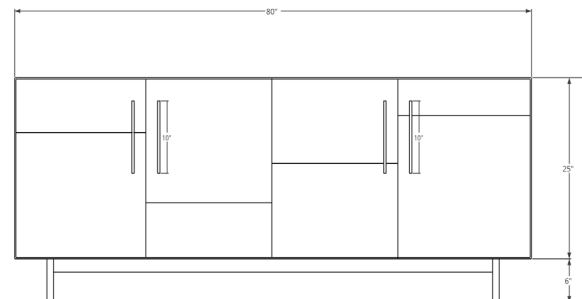


LUGANO,  
CHARCOAL

## TOP VIEW



## FRONT ELEVATION



326 NORTH LA BREA AVENUE  
 LOS ANGELES, CALIFORNIA 90036

323.424.7743  
[WWW.CROFTHOUSE.COM](http://WWW.CROFTHOUSE.COM)



**CROFT  
 HOUSE**