

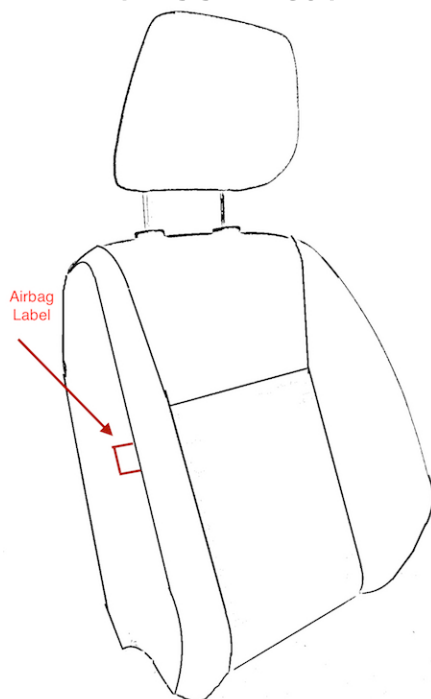
Fitting Instructions for the Landcruiser 300 Series FULL Front Neoprene Seat Covers with map pocket

Due to the airbags incorporated in the vehicles seating, for your safety, it is extremely important that you read this entire document, prior to fitting the seat covers. Our customer's safety is the most important thing to us, so If you have any specific questions or troubles fitting the seat cover, please contact us first, as we are more than willing to assist with any enquiry.

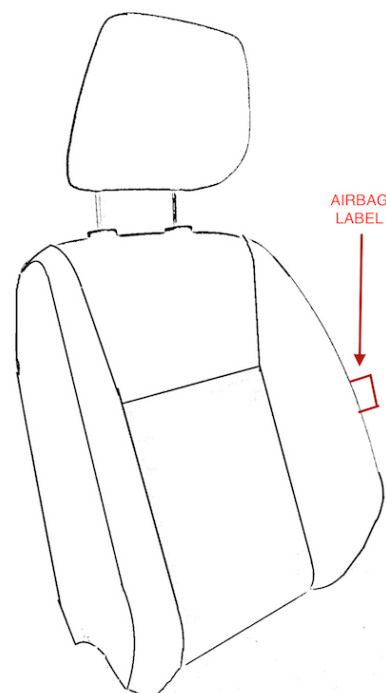
Important things to know PRIOR to fitment:

a) The Driver and Passenger side front seat covers are different and **MUST** be fitted to their correct sides. The easiest way to identify the difference – The drivers side seat cover has an 'Airbag' label which will correspond with the drivers seat 'airbag' label (which is located closest to the drivers door). The passengers side seat cover has an 'Airbag' label which will correspond with the passengers seat 'airbag' label (which is located closest to the passengers door). See illustration below.

DRIVERS SEAT COVER


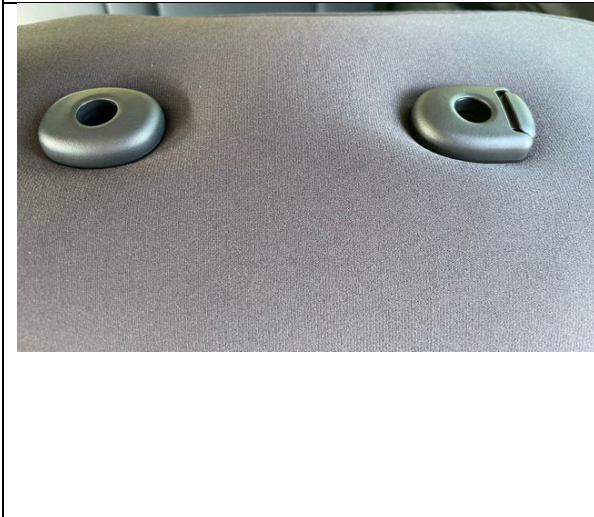



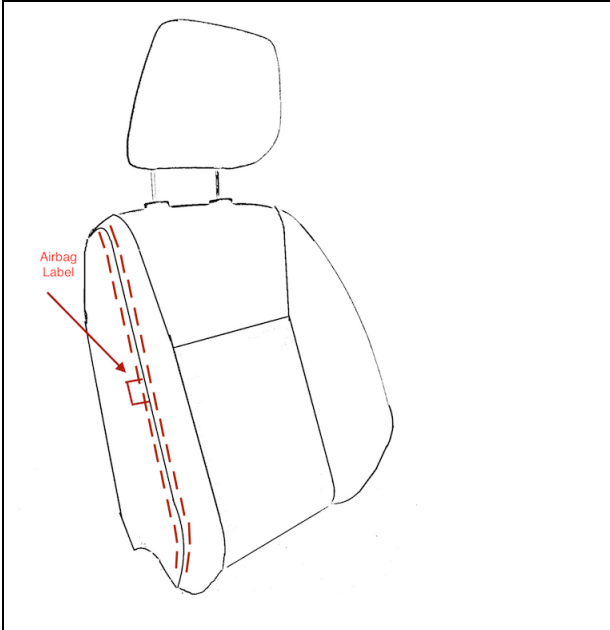
PASSENGERS SEAT COVER



b) When fitting the seat cover over the backrest section – It is very important that you aren't too rough in the fitment (particularly on the 2 airbag panels). You should carefully lower the cover at the same rate. If one side is drastically favoured when fitted, it will stretch the opposing panel, which may potentially tear the seat covers special stitching, which has been designed specifically for airbag safety / deployment. We will discuss this further in the steps below.

Fitting Instructions – A step by step guide

	<p>Step 1) Remove front headrests from the seats. IF YOU HAVE THE SAHARA MODEL (DVD Headrest) don't attempt to remove the headrest and skip to step 3</p>
	<p>Step 2) Fit Headrest Cover and place the headrest safely to one side – It will be re-fitted later on</p>
	<p>Step 3) Gently place the seat cover over the backrest section. You should carefully lower the cover at the same rate. If one side is drastically favoured when fitted, it will stretch the opposing panel, which may potentially tear the seat covers special airbag stitching, which has been designed specifically for airbag safety / deployment. Tuck the holes created in the cover underneath the plastic.</p>
	<p>IF YOU HAVE THE SAHARA MODEL – Fit the seat cover over the top of the headrest / DVD Screen like the photo to the left.</p>



Step 4) Please ensure that our 'Airbag seam' is closely aligned to the original seats 'Airbag seam'. If you need to re-align the seat cover seam in any way, please do so by 'pinching' the 2 panels together and maneuvering the seat cover airbag panels to the correct position. Don't pull the panels across for re-alignment, as this could potentially tear the airbag seam.



Step 5) **Cushion Fitment** - To ensure that the seat cover is fitted correctly, you should correctly align the front of the cushion section first. The photo to the left is of a Prado 150 - however similar fitting principles apply. If it is incorrectly fitted the cover will be loose at the front of the cushion and not sitting correctly as it has been designed. **The photos to the left indicate the cushion cover incorrectly fitted.**

In Step 6 and beyond, you'll see the correct fitment steps to ensure that it sets correctly.



Step 6) **Cushion Fitment - CORRECT FITMENT.** Start off by aligning the seat cover at the front of the cushion. When fitted correctly, this can cause there to be bunching up of the neoprene towards the backrest section (see Step 7). This will be rectified in later steps.

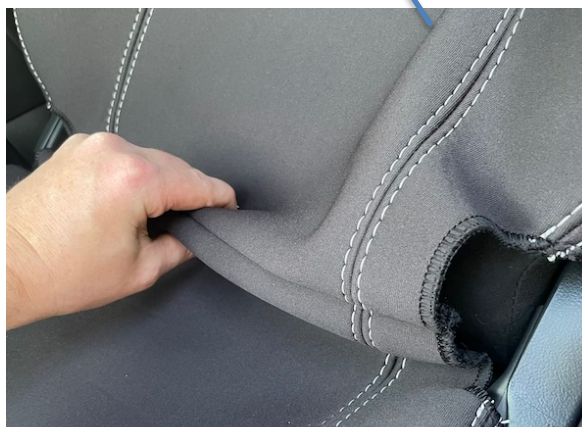
Some models will have a plastic front that you can tuck the material into, other models don't have plastic at the front.



Step 7) Bunching up of the material towards the back of the seat will not be as pronounced as the image to the left (Prado 150 example). However, if you have fitted the front section of the cushion correctly, there will be excess neoprene that needs to be fed through the gap of the cushion and backrest section. Once you are satisfied that the side bolsters of the cushion are aligned correctly you can tuck the neoprene between the original trim and the plastic (up to the point of bunching).



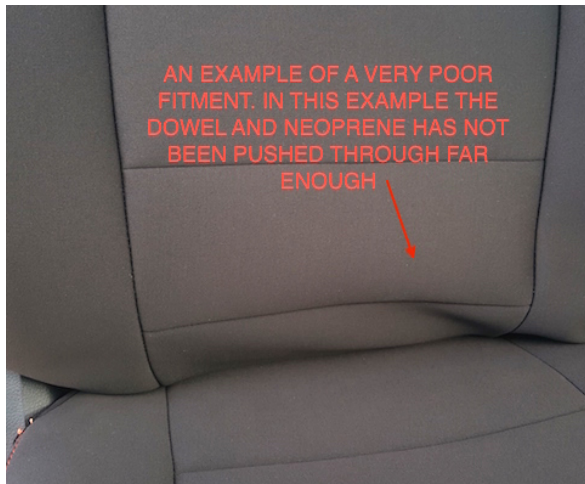
Step 8) Once the cushion section is correctly fitted you can then push the dowel pocket and excess neoprene through the gap between the cushion and the backrest section as per the **first illustration to the left** . You should lower the seat to a 45 degree angle as this will create greater space for the dowel pocket and excess neoprene to be fed through.



On some models you can go behind



the seat (near the map pocket) and access the dowel pocket by pushing the carpet to the side and then pulling the dowel pocket through even further. Be careful not to be too aggressive as this could tear the neoprene. Ensure that it does not latch on to any cables or obstructions.



The illustration to the left showcases a very poorly fitted seat cover. If there is too much 'bunching up' of material it means that you have not tucked enough of the dowel / neoprene through the gap between the cushion and the backrest. Refit as per Step 8.



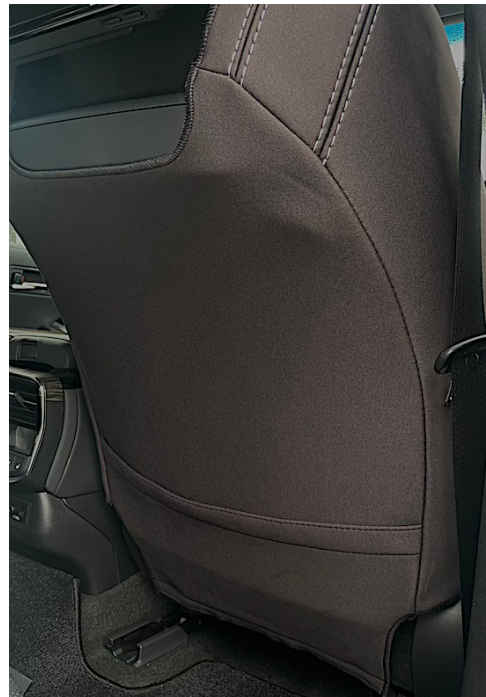
If correctly fitted it will be smooth like the photo to the left free from any lumps / bunnching. If it does look



Step 9) Ensure that the excess neoprene on the cushion section is tucked between the gap of the original trim and the plastic (NOT OVER THE TOP OF THE PLASTIC). Some models will have plastic at the front of the seat also.



Step 10) Affix the Velcro to the carpet on the back of the seat.



Step 11) Re-fit Headrest – Not applicable to DVD headrest models



An example of correct fitment



Please Note: There is always going to be a slight gap between the original trim and the backrest section. This is due to the angle of the side bolsters. Unlike the original trim that is glued to foam, it naturally will want to pull outwards a little bit. It may take a few trips of

	<p>sitting in the seat for the seat cover to take full shape. If the seat cover has not been aligned correctly i.e side seams pointing too far outwards towards the door trim side and centre console side, this can create a larger gap. You should pinch these seams inwards to further minimise the gap.</p>
--	---

Removal of the Seat Cover – Special Considerations

- 1) Ensure that you carefully remove the dowel from in-between the backrest and the cushion. This can be done by evenly pulling the material through on the left hand and right hand side. Failure to do so carefully could harm or tear the material. Warranty claims will not be accepted for tears to this region, as this is a fitment error, not material failure.
- 2) When removing the backrest portion, you should carefully raise the cover at the same rate. If one side is drastically favoured when removed, it will stretch the opposing panel, which may potentially tear the seat covers special stitching, which has been designed specifically for airbag safety / deployment. Warranty claims will not be accepted for tears to this region, as this is a fitment error, not material / stitch failure.

On-going Maintenance / Care Instructions / Safety Instructions

- 1) Please use a warm cloth to remove any dirt or grime from the seat cover. Please then allow the seat cover to naturally dry.
- 2) Excessive vacuuming can have an impact on neoprene's laminated scrim. Whilst our neoprene is a car company specification neoprene, excessive vacuuming may shorten the life of the product. IT IS STRONGLY suggested that you don't vacuum anywhere near the airbag seams / panels. Avoid vacuuming the feature stitching as this can lead to the thread pulling away from the seat cover.
- 3) On an on-going basis you should check to see that the seat cover is correctly positioned over the original seats 'airbag seam'.
- 4) In the event of the seats airbags deploying, the covers must not be re-used. Don't attempt to re-sew / re-stitch the panels, as this could result in serious injury or death.
- 5) DON'T put the cover in the washing machine. The safest and most effective method is to soak it in a tub / bath with warm soapy water and then allow them to drip dry.

Any further questions please contact

Andrew Leask
Owner / Director

Global Automotive Accessories
M: 0413 438 874
E: andrew@globalautomotive.com.au
Website: www.globalautomotive.com.au