

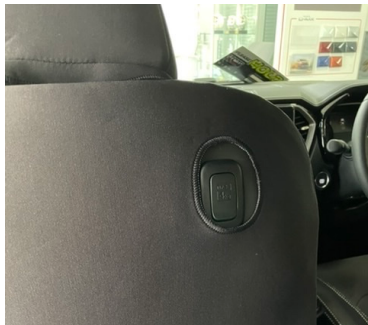


Fitting Instructions for the Isuzu MUX FULL Front Neoprene Seat Covers with map pocket

Due to the airbags incorporated in the vehicles seating, for your safety, it is extremely important that you read this entire document, prior to fitting the seat covers. Our customer's safety is the most important thing to us, so If you have any specific questions or troubles fitting the seat cover, please contact us first, as we are more than willing to assist with any enquiry.

Important things to know PRIOR to fitment:

a) If your model MUX has the passengers side hook (see below), on the back of the front seat, you can easily identify the appropriate seat cover, by the hole that has been created in the back of the seat cover. If there is no hook on the passengers side, it doesn't matter which seat cover is fitted to the drivers or passengers side (as they fit both sides)



b) When fitting the seat cover over the backrest section – It is very important that you aren't too rough in the fitment (particularly on the airbag panels). You should carefully lower the cover at the same rate. If one side is drastically favoured when fitted, it will stretch the opposing panel, which may potentially tear the seat covers special airbag stitching, which has been designed specifically for airbag safety / deployment. If needing to re-position the seat cover, please make sure you pinch the seam and re-adjust, not pull the seat cover.

Fitting Instructions – A step by step guide



Step 1) Remove front headrests from the seats



Step 2) Turn the neoprene headrest cover inside out and place on the headrest.

'Rolling on'

Front View




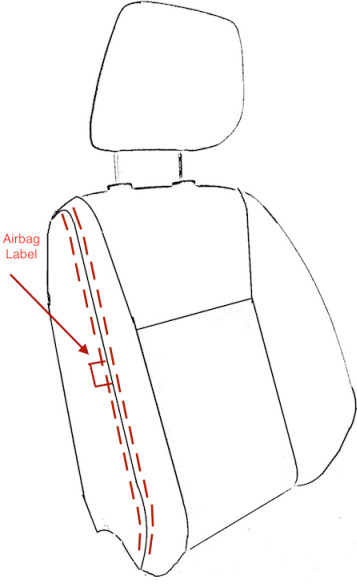
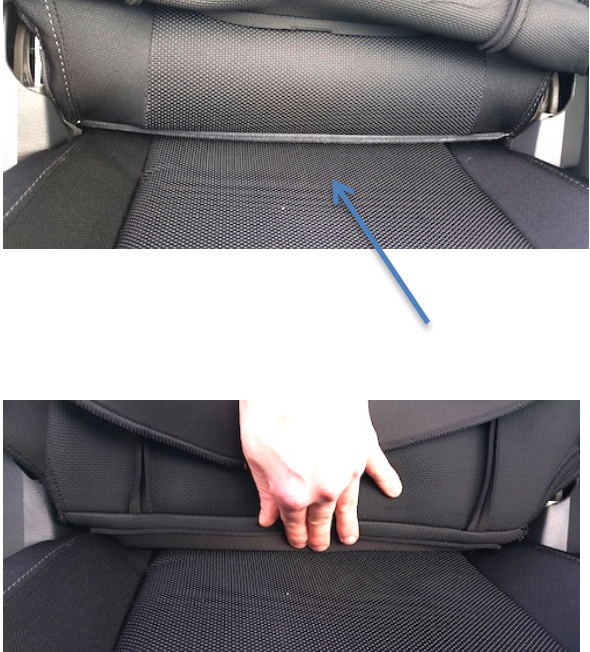
Step 3) Roll the headrest cover onto the headrest (the headrest cover should no longer be inside out). The 'Feature thread' should be facing the front. The back sewn thread facing the rear – As per the photos to the left.

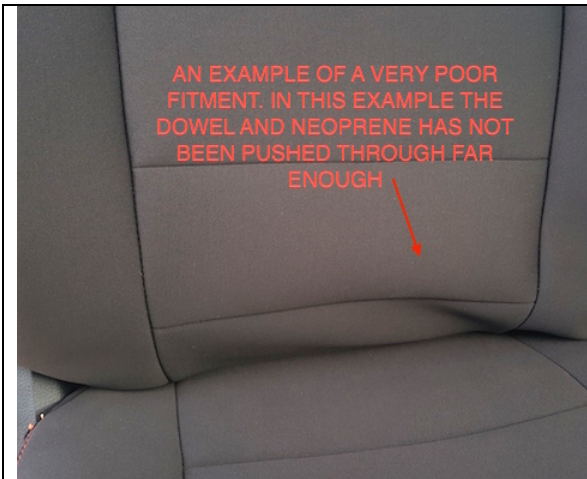
Rear View



Step 4) Secure the touch tape tabs

Step 5) Place the headrest safely to one side – It will be re-fitted later on

	<p>Step 6) Gently place the seat cover over the backrest section. You should carefully lower the cover at the same rate. If one side is drastically favoured when fitted, it will stretch the opposing panel, which may potentially tear the seat covers special stitching, which has been designed specifically for airbag safety / deployment. Ensure that the eyelets line-up with the holes in the seat.</p>
	<p>Step 7) Please ensure that our 'Airbag seam' is closely aligned to the original seats 'Airbag seam'. If you need to re-align the seat cover seam in any way, please do so by 'pinching' the 2 panels together and maneuvering the seat cover airbag panels to the correct position. Don't pull the panels across for re-alignment, as this could potentially tear the airbag seam.</p>
	<p>Step 8) Once the backrest section is correctly fitted you can then push the dowel pocket through the gap between the cushion and the backrest. The first illustration to the left indicates the gap in which the dowel pocket should be pushed through.</p> <p>The second illustration to the left indicates how the dowel should be tucked through</p>



The third illustration to the left showcases a very poorly fitted seat cover. If there is too much ‘bunching up’ of material it means that you have not tucked enough of the dowel / neoprene through the gap between the cushion and the backrest. Our seat covers have been specially designed so that the seat cover can still be in operation / comfortable when the seats are fully reclined, which is why it is important to tuck the neoprene through the gap, when the seats are in an upright position.



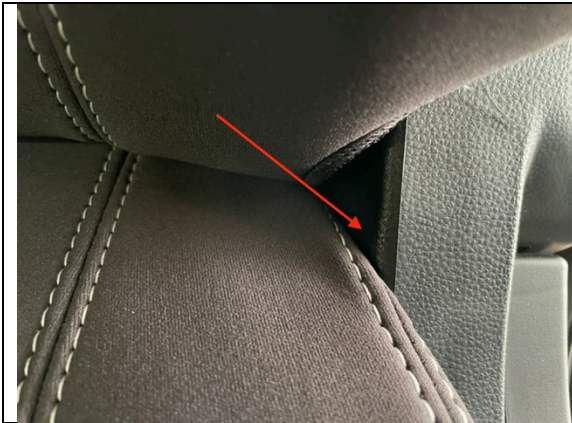
The fourth illustration to the left showcases a perfectly fitted seat cover. In this example a suitable amount of the dowel / seat cover has been tucked through the gap.



Step 9) Ensure that you tuck the neoprene in between the gap of the original trim and the plastic on the side of the seat.



Step 10) There is a small irregular shape that has been sewn into the cushion (similar to the photo to the left). This is to be tucked into the following section – see photo on the next page.



There is a small section within the cushion which you can tuck the irregular shape into.



Step 11) Re-fit Headrest

Step 12) Some models have carpet near the map pocket area. If so, remove the protective touch tape that we have affixed to seat cover, so that you can then stick the Velcro to the carpet



If fitted correctly your seat cover should look like this. The critical element is pushing enough of the excess neoprene and dowel through the gap of the cushion and backrest section.

Removal of the Seat Cover – Special Considerations

- 1) Ensure that you carefully remove the dowel from in-between the backrest and the cushion. This can be done by evenly pulling the material through on the left hand and right hand side. Failure to do so carefully could harm or tear the material. Warranty claims will not be accepted for tears to this region, as this is a fitment error, not material failure.
- 2) When removing the backrest portion, you should carefully raise the cover at the same rate. If one side is drastically favoured when removed, it will stretch the opposing panel, which may potentially tear the seat covers special stitching, which has been designed specifically for airbag safety / deployment. Warranty claims will not be accepted for tears to this region, as this is a fitment error, not material / stitch failure.
- 3) Removal of the headrest cover – Once the headrest has been removed from the seat, simply follow Steps 4, 3 and 2 (in this order) – rolling off the material from the headrest. Once removed, please ensure that touch tape tabs are then secured – This will prevent any damage / fraying of threads, as a result of the touch tape sticking to the threads on the seat cover

On-going Maintenance / Care Instructions / Safety Instructions

- 1) Please use a warm cloth to remove any dirt or grime from the seat cover. Please then allow the seat cover to naturally dry.
- 2) Excessive vacuuming can have an impact on neoprene's laminated scrim. Whilst our neoprene is a car company specification neoprene, excessive vacuuming may shorten the life of the product. IT IS STRONGLY suggested that you don't vacuum anywhere near the airbag seams / panels. This may lead to the airbag seams breaking. You should also not vacuum the twin needle stitching as this can pull the thread away
- 3) On an on-going basis you should check to see that the seat cover is correctly positioned over the original seats 'airbag seam'.
- 4) In the event of the seats airbags deploying, the covers must not be re-used. Don't attempt to re-sew / re-stitch the panels, as this could result in serious injury or death.

Warranty Claims

Warranty claims are valid for 1 year and will only be accepted if the material is found to be defective. Photographic evidence must be provided prior to any goods being returned to Global Automotive Accessories for a warranty claim. Failure to follow the fitting instructions will void any warranty claims. Although the material is durable and stretchable in nature, if the cover is fitted too aggressively, like all materials, it can tear. Please ensure that the covers are fitted gently and with care.

Any further questions please contact

Andrew Leask
Owner / Director

Global Automotive Accessories
PO Box 217
Moorabbin VIC 3189
T: 1300 101 707
E: andrew@globalautomotive.com.au
Website: www.globalautomotive.com.au

Thank-you for your purchase

From all at Global Automotive Accessories we would like to thank-you for purchasing the Isuzu MUX Front Neoprene Seat Cover. Our success would not be possible without our loyal and valued customers. If you are satisfied with the quality of our products and services, we would greatly appreciate it if you could recommend our products to your family or friends.