




Fitting Instructions for the Ford Next Gen Ranger Rear Neoprene Seat Cover

Please read this document in its entirety prior to fitting the seat cover. If you have any specific questions or troubles fitting the seat cover, please contact us first, as we are more than willing to assist with any enquiry.

	<p>Step 1) Push the front seats as far forward to the front of the vehicle, to ensure an easier fitment of the rear seat cover.</p>
	<p>Step 2) Remove all 3 headrests by pressing the button on the right hand side and lifting the headrest until it cannot be raised any further. From there, you will need a small, blunt object to press in the dimple on the left hand side, whilst also pressing the right hand side (This is done easiest with 2 people). Raise the headrest until the headrest stalks are removed from the seat. Note: The middle headrest is a different headrest cover to the 2 x outer headrests.</p>
	<p>Step 3a) As per the pictures to the left and below, fit the headrest cover by placing the headrest into the headrest cover. Squeeze the foam in the headrest to make it easier to fit the headrest cover. Note: Please be gentle when fitting the headrest cover, as it is a tight, custom-fit design. THE PHOTOS ARE ILLUSTRATIONS ONLY AND MAY NOT BE THE SAME HEADRESTS COVERS</p> 



Step 3b) Secure the touch tape tabs

Step 4) Place the headrests safely to one side, as they will be re-fitted later.



Step 5) **Backrest Fitment** - Start by pulling the middle seat belt outwards. It is critical that you do this, otherwise you will lose access to the middle seat belt.

Once pulled outwards place the cover in between the gap of the cushion and middle seat belt.



Step 6) Fit the neoprene cover over the entire backrest.



Step 7) Once fitted, ensure that the tag, which is used to lower the backrest, is pulled through the provided hole.



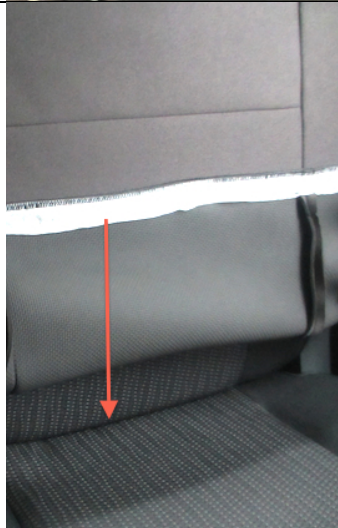
Step 8) The holes that have been created in the seat cover should be tucked under the plastic housing, as per the photos. Start at the front of the plastic and then work your way back.

Once fitted, re-fit the headrest. This will act as a locking mechanism for the seat cover, so that it can be fitted much easier in the later steps.





Step 8a) **IF YOU EVER REMOVE THE SEAT COVER**, be careful with the removal, so you don't tear the holes. Start at the front of the seat cover and pinch the seat cover upwards and then work towards the back.



Step 9) Carefully push the neoprene between the gap of the backrest and the cushion. This will be used to join the touch tape on the other side of the backrest (see Step 10). **Please Note:** It is much easier to tuck the material through the gap when the backrest is lowered to a 45 degree angle.



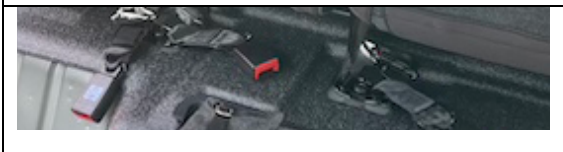

Step 10) Fold the seat flat and remove the protective touch tape. This will allow you to affix the touch tape to the carpet on the back of the seat.

As per the photo below, ensure that the touch tape is pulled quite tight – upwards / inwards (not too tight as you don't want to tear the neoprene).



Failure to fit the product tight enough will mean that the product looks quite loose at the front of the seat cover. Re-adjust where required, adjusting the tension, to ensure you are happy with the overall fit on the front.

Note: Please don't throw away the removed protective touch tape, as it will be necessary to keep in the event that you remove the seat covers – Further details included in '**Removal of the Seat Cover – Special Considerations**'

	<p>Step 11) Cushion Fitment – Lift seat cover by pulling either of the straps at the front of the cushion</p>
	<p>Step 12) Ensure that all seat belt buckles are removed from their webbing and resting on the floor for easier fitment in the future steps.</p>
	<p>Step 13) Tuck the neoprene through the gap in the cushion and the backrest. This is done easiest through the backrest being lowered to a 45 degree angle. Gently pull the material all the way through until it is up against the back of the cushion and in-line with the seat belt buckle. Once through, re-raise the backrest to its normal position</p>
	<p>Step 14) Affix the Velcro to the carpet underneath the seat. Ensure that it is aligned correctly for seat belt access and isofix point access.</p>
	<p>Step 15) Re-adjust where required and ensure that the seat belt buckles are then re-inserted so you can have access to the seat belt buckles once the cushion section is lowered.</p>

PLEASE SEE VARIOUS PHOTOS OF HOW THE PRODUCT SHOULD LOOK IF FITTED CORRECTLY



Removal of the Seat Cover – Special Considerations

- 1) Removal of the headrest covers – Once the headrest cover has been removed, please ensure that touch tape tabs are then secured together – This will prevent any damage / fraying of threads, as a result of the touch tape sticking to the threads on the seat cover.
- 2) Removal of the backrest & cushion cover - You must carefully remove the cover evenly on both sides at the same rate. If only one side is raised first, it may result in the stitching tearing (warranty claims will not be accepted if neoprene / stitching is damaged as a result of incorrect removal).
- 3) Removal of the backrest and cushion cover – Once completely removed, re-attach touch tape tabs that were removed. This will prevent any damage / fraying of threads, as a result of the touch tape sticking to the threads on the seat cover.

On-going Maintenance / Care Instructions

- 1) Please use a warm cloth to remove any dirt or grime from the seat cover. Please then allow the seat cover to naturally dry.
- 2) Although our seat covers are incredibly durable, Global Automotive Accessories does not recommend that you vacuum your seat covers. Regular vacuuming over time, may compromise the strength of the seat cover. Please use other suitable methods (such as a dustpan) to remove excessive dust, dog hair etc.

Any further questions please contact:

Andrew Leask
Owner / Director

Global Automotive Accessories
T: 1300 101 707
E: andrew@globalautomotive.com.au
W: www.globalautomotive.com.au