





*Please read this document in its entirety prior to fitting the seat cover. If you have any specific questions or troubles fitting the seat cover, please contact us first, as we are more than willing to assist with any enquiry.*

	<p>Step 1) Push the front seats as far forward to the front of the vehicle, to ensure an easier fitment of the rear seat cover.</p>
	<p>Step 2) Remove all 3 headrests from the seat by pressing the button on the side</p>
	<p>Step 3) Fit the 2 x outer headrest covers first</p>
	<p>Step 4) Secure the touch tape tabs</p>
<p><b>Pre Fitment</b></p> 	<p>Step 5 – Centre Headrest instructions - As per the pictures to the left, fit the headrest cover by placing the headrest into the headrest cover. Squeeze the foam in the headrest to make it easier to fit the headrest cover. <b>Note:</b> Please be gentle when fitting the headrest cover, as it is a tight, custom-fit design.</p> <p><b>How Fitment should look once the headrest is re-fitted</b></p>

**How Fitment should look underneath**



Step 6) Place the headrests safely to one side, as they will be re-fitted in Step 7



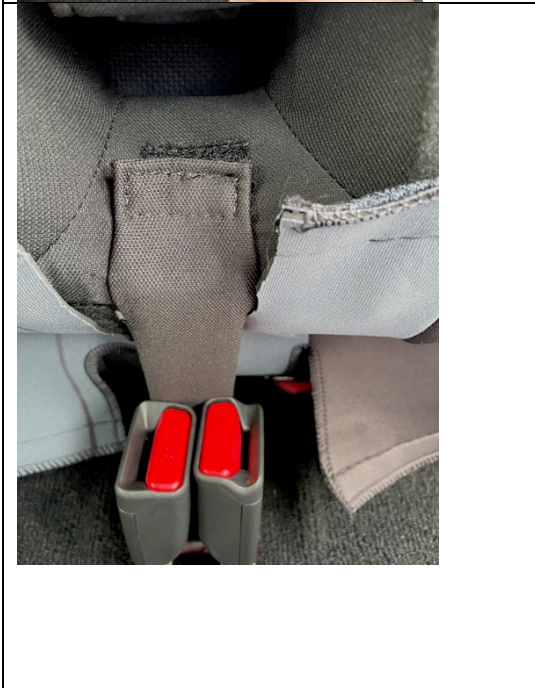

Step 7) **Backrest Fitment** – As the backrest section cannot be folded down (it is locked in place), as a starting point you should place the backrest seat cover over the backrest section. **Note:** Ensure that the covers is fitted underneath the seat belt (not over the top of it). You can do this by pulling the middle seat belt outwards and then fitting it between the gap of the seat belt and the original trim. You should then re-fit one headrest at a time through the eyelets. This will act as a locking mechanism for the seat cover, so that it can be fitted much easier in the later steps.



Step 8) Tuck the top section of the neoprene cover between the backrest and the plastic panel. **Please Note:** There are areas, which it is an incredibly tight fit. In these tight areas, it is easiest to use a wooden ruler (or similar) to push the neoprene through the gap.

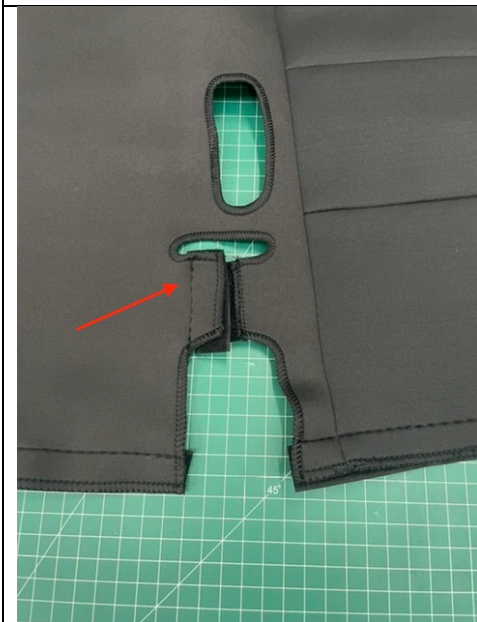
	<p>Step 9) Ensure that the shoulders of the seat cover (on both sides) are tucked in nicely. There is a small gap in which the material can also be pushed through.</p>
	<p>Step 10) Carefully tuck the neoprene between the gap of the backrest and the cushion. <b>Note:</b> It is much easier to tuck the material through the gap when the cushion section is raised (Please refer to step 14) to see how you can lift up the cushion)</p>
	<p>Step 11) There are 4 x isofix points located throughout the seat. To ensure you can still access the isofix points, it's critical that you tuck the cover between the gap of the isofix point and the original seat (as per the left). <b>DON'T GO OVER THE TOP OF THE ISOFIX BAR LIKE THE PHOTO BELOW</b></p> 



	<p>Step 12) There are 3 x Velcro strips sewn to the seat cover. Remove the protective layer. The Velcro will be used to attach to the floor (see step 13)</p>
	<p>Step 13) Attach the Velcro to the carpet on the floor. Attach towards the back of the vehicle, as this will create more tension on the seat cover and make it a tighter fit. Be careful not to be too tight as it might tear the seat cover.</p>
	<p>Step 14) <b>CUSHION FITMENT</b> To raise the cushion section simply pull the binding tape latch (at the front of the cushion). You can then roughly place the seat cover over the top of the cushion once it is in the upright position.</p>
	<p>Step 14) It's important to note: that there are 2 x tabs that Nissan have sewn into the cushion section. These cannot be removed (it's to hold the seat belt buckles into place). We have created 2 x cutouts so that the cover can be fitted around these tabs- see below</p> 



Step 15) After the cushion is raised, place the cover over the cushion. Tuck the neoprene through the gap between the cushion and the backrest. Prior to removing the protective touch tape (step 17), ensure that you are happy with the fitment. Ensure that the holes in the seat cover cushion are aligned with the seat belt buckles



Step 16) We have created a slit in the seat cover to allow the middle seat belt to go through the seat cover. Once the middle seat belt is through the cover (see the photo to the left and below) you can then join the seat cover together – NOTE: you will need to remove the Velcro protective layer first so that it will stick together.



Step 17) If happy with the fitment in Step 15 and Step 16, lift the cushion section up and remove the protective touch tape. Affix the velcro to the carpet on the cushion section, as per the photos to the left and on the next page.



### **Removal of the Seat Cover – Special Considerations**

- 1) Removal of the headrest covers – Carefully remove the headrest from the base of the backrest. Once the headrest cover has been removed, please ensure that touch tape tabs are then secured together – This will prevent any damage / fraying of threads, as a result of the touch tape sticking to the threads on the seat cover.
- 2) Removal of the backrest and cushion cover – Once completely removed, re-attach protective touch tape tabs that were removed. This will prevent any damage / fraying of threads, as a result of the touch tape sticking to the threads on the seat cover.

### **On-going Maintenance / Care Instructions**

- 1) Please use a warm cloth to remove any dirt or grime from the seat cover. Please then allow the seat cover to naturally dry.
- 2) If completely filthy, remove the seat covers, soak them in a bath / tub with warm soapy water and then allow them to drip dry.
- 3) Although our seat covers are incredibly durable, Global Automotive Accessories does not recommend that you vacuum your seat covers (particularly the twin needle stitching). Regular vacuuming over time, may compromise the strength of the seat cover. Please use other suitable methods (such as a dustpan) to remove excessive dust, dog hair etc.



## **Warranty Claims**

Warranty claims are valid for 1 year and will only be accepted if the material or sewing is found to be defective. Photographic evidence must be provided prior to any goods being returned to Global Automotive Accessories for a warranty claim. Failure to follow the fitting instructions will void any warranty claims. Although the material is durable and stretchable in nature, if the cover is fitted too aggressively, like all materials it can tear. Please ensure that the covers are fitted gently and with care.

## **Any further questions please contact:**

Andrew Leask  
Owner / Director

Global Automotive Accessories

PO Box 217

Moorabbin VIC 3189

M: 0413 438 874

E: [andrew@globalautomotive.com.au](mailto:andrew@globalautomotive.com.au)

eBay Store: <http://stores.ebay.com.au/globalautomotiveaccessories/>

## **Thank-you for your purchase**

From all at Global Automotive Accessories we would like to thank-you for purchasing the Nissan Navara – Rear Neoprene Seat Cover. Our success would not be possible without our loyal and valued customers. If you are satisfied with the quality of our products and services, we would greatly appreciate it if you could recommend our products to your family or friends.