



Fitting Instructions for the Toyota LC300 Series VX / GR Sport and Sahara 2nd Row Neoprene Seat Cover

Due to the airbags incorporated in the vehicles seating, for your safety, it is extremely important that you read this entire document, prior to fitting the seat covers. Our customer's safety is the most important thing to us, so If you have any specific questions or troubles fitting the seat cover, please contact us first, as we are more than willing to assist with any enquiry.

Important things to know PRIOR to fitment:

a) When fitting the seat cover over the backrest section – It is very important that you aren't too rough in the fitment (particularly on the airbag panels). You should carefully lower the cover at the same rate. If one side is drastically favoured when fitted, it will stretch the opposing panel, which may potentially tear the seat covers special airbag stitching, which has been designed specifically for airbag safety / deployment. If needing to re-position the seat cover, please make sure you pinch the seam and re-adjust, not pull the seat cover.

	<p>Step 1) Push the front seats as far forward to the front of the vehicle, to ensure an easier fitment of the rear seat cover.</p>
	<p>Step 2) Remove all headrests by pressing the button on the side and lifting the headrest out. Please Note: The middle headrest you need to press 2 x buttons to remove the headrest.</p> <p>Fit headrest covers and then place to one side, as they will be re-fitted later.</p>
	<p>Step 3) 40% BACKREST FITMENT (PASSENGERS SIDE) Lower the backrest to a 45 degree angle by pulling the lever (towards the front of the vehicle)</p> <p>If wanting to use the tether points on the back of the seat, you can simply fold it down and have it tucked underneath the seat cover (in later steps).</p>

	<p>Step 4) 40% Backrest Fitment - Fit the neoprene cover over the entire 40% backrest. NOTE: You must carefully lower the cover on both sides at the same rate. If only one side is fitted first, it may be incredibly difficult to fit the seat cover or it may result in the stitching tearing.</p>
	<p>Step 5) Tuck the holes that have been created in the seat cover under the plastic housing, as per the photos. Start at the front of the plastic and then work your way back.</p> 
 	<p>Step 6) IF YOU EVER REMOVE THE SEAT COVER, be careful with the removal, so you don't tear the holes. Start at the front of the seat cover and pinch the seat cover upwards and then work towards the back.</p> 



Step 7) Carefully push the neoprene between the gap of the backrest and the cushion. This will be used to join the touch tape on the other side of the backrest (see Step 9). **Please Note:** It is much easier to tuck the material through the gap when the backrest is lowered to a 45 degree angle, as covered off in Step 3. You will need to navigate around a cable that is incorporated in the seat. Which is why we have a cut out in the seat to go around the cable - See below photo.



Step 8) Once the neoprene has been fully pushed through the gap. Push the seat all the way down using the lever, which in turn will lift the cushion seat upwards.



Step 9) Join the 2 velcro tabs together that are located on the back of the cover. (as per the picture to the left). **Note: You will need to remove the protective touch tape first from one side** (see below).

Ensure that all holes and provisions on the back of the cover are correctly lined up, so that the backrest can function as normal.



Note: Please don't throw away the removed protective touch tape, as it will be necessary to keep if you remove the seat covers – Further details included in '**Removal of the Seat Cover – Special Considerations**'

Rear of headrest



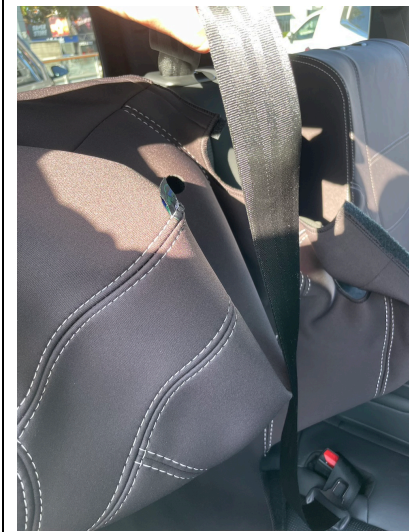
Step 10) Raise the backrest to its original, upright position. Refit the headrest and headrest cover. To ensure the headrest cover is fitted the correct way, the twin needle stitching will always be pointing towards the rear of the vehicle with the horizontal Velcro fitted towards the front of the vehicle.

Front of headrest





Step 11) 40% Backrest Fitment (drivers side) – Please follow the exact same steps as the 40% Backrest Fitment – Steps 4 to 10. To make it easier to fit this section you should completely lower the center section (as per the photo to the left).



NOTE REGARDING MIDDLE SEAT BELT: Please ensure that you pull the middle seatbelt outwards and fit the seat cover between the gap of the seat belt and the original trim. If you attempt to fit the seat cover over the top of the middle seat belt, you won't have access to the middle seat belt.



Step 12) Center Backrest Fitment - There are 2 x pieces for this section. 1 relates to the actual cover and 1 relates to the armrest cover.

Start off by lowering the center armrest. This will make it easier to fit the center cover.

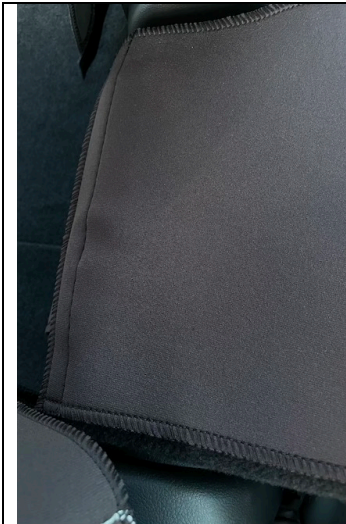


Step 13) Place the center piece over the top of the seat. The Velcro piece will be facing towards the drivers side.



Step 14) The long piece of neoprene needs to tuck between the gap of the seat and the armrest. It is easiest to push through the gap when the armrest is at a 45 degree angle (2 photos to the left). Once fed through the gap it then needs to be fed under the gap at the bottom and the cushion to marry up with the Velcro on the back of the seat (see pics)



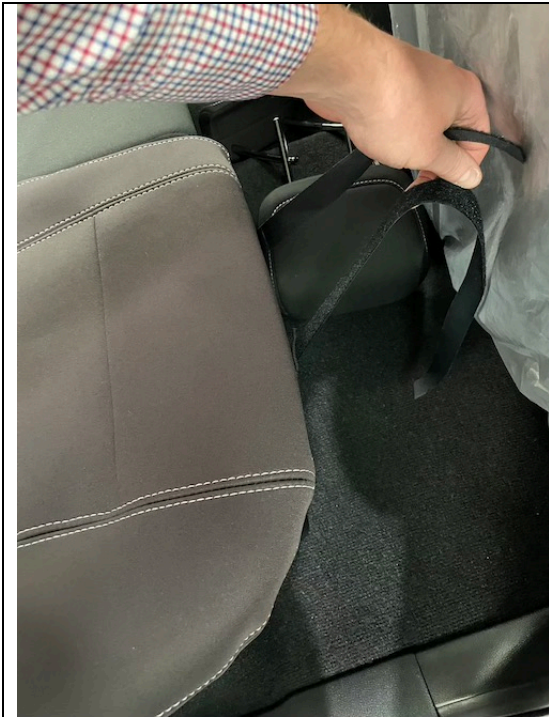


Step 15) It should look like the below photo once connected correctly.



Step 16) **Center Armrest fitment** – Fit the cover over the top of the center armrest. Photos to the left and the below show how it should look when fitted up correctly.





Step 17) **40% Cushion Fitment** – As the cushion doesn't lift at the front. Start off by aligning the seat cover at the front of the cushion. Please ensuring that the Velcro at the front is brought outwards prior to fitting and not hidden under the seat cover.



Step 18) Ensure the twin needle stitching is sitting up towards the top of the seat as pictured



Step 19) If you intend to use the isofix points / baby seat access please lift up the protective fabric which is affixed via Velcro and go onto Step 20. If not intending to use the isofix points you can place the seat cover over the top of the protective fabric and go to Step 21. Please Note: We are required to put slits within the seat cover irrespective of isofix use, as there must be available access

LIKE THIS



Step 20) **Those wanting to use ISOFIX**
– Fold protective tape fabric inward
(photo to the left). NOT OUTWARD (PIC
BELOW)

NOT LIKE THIS



Step 21) Tuck the neoprene through
the gap of the cushion and backrest
section ensuring you also feed the 2 x
long Velcro strips through the gap as
well.

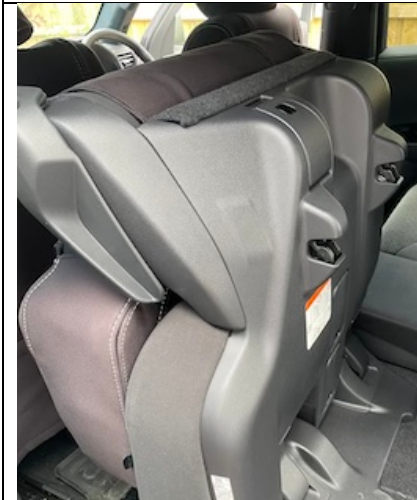


Step 22) There's a flap of neoprene that
needs to be fed through the middle of 2
x plastic components which separate
the 40% backrest and 60% backrest.





Step 23) The velcro strap at the front of the cushion (closest to the middle of the seat) needs to be fed through towards the back of the seat. The other strap (closest to the door) will be fed through in step 25.



Step 24) Push the seat all the way down using the lever, which in turn will lift the cushion seat upwards.



Step 25) As there is no slot for the Velcro strip closest to the door to go through you must turn the velcro sideways (as per the photo to the left) and then rotate it and have it slot in the crevice as per the photo below.



A



Step 26) Once all of the velcros are through you can remove the protective touch tape and join them all together.

There will be the following velcros:

- a) 2 x Velcro straps that join together and go the length of the seat. During this step you should also affix the velcro (near the straps in "A" to the carpet on the back of the seat
- b) 1 x Velcro strap that join together and go the width of the seat
- c) The flap of neoprene (as covered off in Step 22) affixing to big velcro sewn to the cover

C



B



Step 27) Place the seat back to the normal seating position and re-adjust where required.

Correct Fitment



Step 28) **60% Cushion Fitment** – Similar fitting principles to the 40% cushion (Please follow Step 17 to 27), **however there are the following differences, which need to be read before you follow the previous steps.**

- 1) Isofix fabric only features on the drivers side, not in the middle seat
- 2) There are more velcros to connect, with a summary below:

- a) 3 x Velcro straps that join together and go the length of the seat. The

	<p>Velcro closest to the door</p> <p>b) 1 x Velcro strap that join together and go the width of the seat</p> <p>c) The flap of neoprene (as covered off in Step 17) affixing to big velcro sewn to the cover</p>
--	--

PLEASE SEE VARIOUS PHOTOS BELOW AND ON THE NEXT PAGE OF HOW THE PRODUCT SHOULD LOOK IF FITTED CORRECTLY





Removal of the Seat Cover – Special Considerations

- 1) Removal of the headrest covers – Once the headrest cover has been removed, please ensure that touch tape tabs are then secured together – This will prevent any damage / fraying of threads, as a result of the touch tape sticking to the threads on the seat cover.
- 2) Removal of the backrest & cushion cover - You must carefully remove the cover evenly on both sides at the same rate. If only one side is raised first, it may result in the stitching tearing (warranty claims will not be accepted if neoprene / stitching is damaged as a result of incorrect removal).
- 3) Removal of the backrest and cushion cover – Once completely removed, re-attach touch tape tabs that were removed. This will prevent any damage / fraying of threads, as a result of the touch tape sticking to the threads on the seat cover.

On-going Maintenance / Care Instructions

- 1) Please use a warm cloth to remove any dirt or grime from the seat cover. Please then allow the seat cover to naturally dry.
- 2) Although our seat covers are incredibly durable, Global Automotive Accessories does not recommend that you vacuum your seat covers. Regular vacuuming over time, may compromise the strength of the seat cover. Please use other suitable methods (such as a dustpan) to remove excessive dust, dog hair etc.

Any further questions please contact:

Andrew Leask
Owner / Director

Global Automotive Accessories
T: 1300 101 707
E: andrew@globalautomotive.com.au
W: www.globalautomotive.com.au