




Fitting Instructions for the Isuzu MU-X (2nd Gen) Rear Neoprene Seat Cover

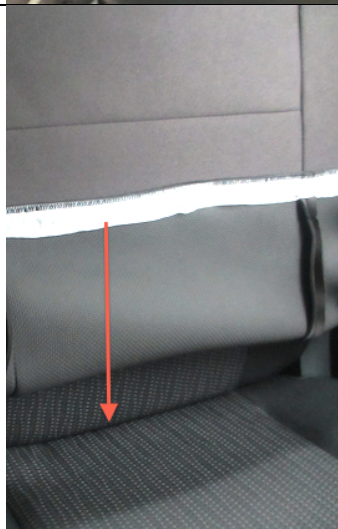
Please read this document in its entirety prior to fitting the seat cover. If you have any specific questions or troubles fitting the seat cover, please contact us first, as we are more than willing to assist with any enquiry.

	<p>Step 1) Push the front seats as far forward to the front of the vehicle, to ensure an easier fitment of the rear seat cover.</p>
	<p>Step 2) Remove all headrests by pressing the button on the right hand side and lifting the headrest until it cannot be raised any further.</p>
	<p>Step 3a) As per the pictures to the left and below, fit the headrest cover by placing the headrest into the headrest cover. Squeeze the foam in the headrest to make it easier to fit the headrest cover. Note: Please be gentle when fitting the headrest cover, as it is a tight, custom-fit design. THE PHOTOS ARE ILLUSTRATIONS ONLY AND MAY NOT BE THE SAME HEADRESTS COVERS</p> 

	<p>Step 3b) Secure the touch tape tabs</p>
	<p>Step 4) Place the headrests safely to one side, as they will be re-fitted later on.</p>
	<p>Step 5) 40% Backrest Fitment - Fit the neoprene cover over the entire 40% backrest (drivers side). NOTE: You must carefully lower the cover on both sides at the same rate. If only one side is fitted first, it may be incredibly difficult to fit the seat cover or it may result in the stitching tearing.</p>
	<p>Step 6) The seat cover in the 2nd row does not have eyelets inserted into the product. The holes that have been created in the seat cover should be tucked under the plastic housing, as per the photos. Start at the front of the plastic and then work your way back.</p> <p>Once fitted, re-fit the headrest. This will act as a locking mechanism for the seat cover, so that it can be fitted much easier in the later steps.</p> 



Step 6a) **IF YOU EVER REMOVE THE SEAT COVER**, be careful with the removal, so you don't tear the holes. Start at the front of the seat cover and pinch the seat cover upwards and then work towards the back.



Step 7) Carefully push the neoprene between the gap of the backrest and the cushion. This will be used to join the touch tape on the other side of the backrest (see Step 8). **Please Note:** It is much easier to tuck the material through the gap when the backrest is lowered to a 45 degree angle.



Step 8) Fold the seat flat and join the 2 velcro tabs together that are located on the back of the cover. (as per the picture to the left). **Note: You will need to remove the protective touch tape first from one side** (see below).

Ensure that all holes and provisions on the back of the cover are correctly lined up, so that the backrest can function as normal. You can now raise the backrest to its original, upright position.



Note: Please don't throw away the removed protective touch tape, as it will be necessary to keep in the event that you remove the seat covers – Further details included in '**Removal of the Seat Cover – Special Considerations**'



Step 9) – **60% Backrest Fitment** – Please follow the exact same steps as the 40% Backrest Fitment – Steps 5 to 8. **NOTE REGARDING MIDDLE SEAT BELT:** Please ensure that you pull the middle seatbelt outwards and fit the seat cover between the gap of the seat belt and the original trim. If you attempt to fit the seat cover over the top of the middle seat belt, you won't have access to the middle seat belt.



Step 10) **40% Cushion Fitment** –Start off by aligning the seat cover at the front of the cushion. Please ensuring that the Velcro at the front is brought outwards prior to fitting (see pic)

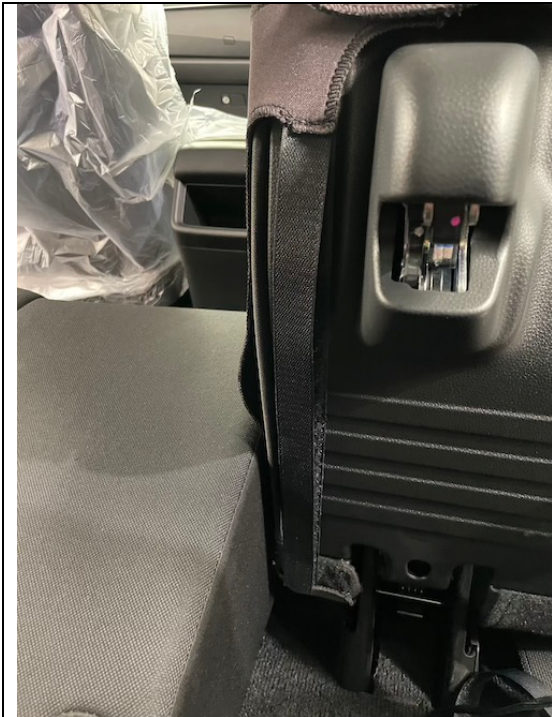
Step 11) Once the seat cover seems to be aligned correctly, feed neoprene through the gap of the cushion and the backrest section. This is done best when the seat is fully folded up against the front seat. Ensure that all Velcro is visible



Step 12) Join the 2 x large velcro tabs – These are located closest to the centre of the vehicle.



Above is a photo of how it should look once joined



Step 13) Join the long Velcro strip that is located closest to the centre of the vehicle.



Step 14) the long Velcro strip that is located closest to the door side of the vehicle.

	<p>Step 15) Slot other small velcro (door side) in between the gap. It then affixes to carpet, internally. You'll need to remove protective touch tape layer prior to fitting section.</p> 
	<p>Step 16) Tuck neoprene into the plastic on the side of the seat. To avoid bunching at the front of the seat cover, pinch quite a bit of material at the back and push through as much as possible towards the back of the vehicle. If done incorrectly, there can be a lot of bunching at the front.</p>
	<p>Step 17) 60% Cushion Fitment – Please follow the exact same steps as the 40% Cushion Fitment – Steps 10 to 16. Note: It is much easier to fit the 60% cushion section if the 40% cushion is folded upright against the back of the front seat</p>

PLEASE SEEVARIOUS PHOTOS ON THE NEXT PAGE OF HOW THE PRODUCT SHOULD LOOK IF FITTED CORRECTLY



Removal of the Seat Cover – Special Considerations

- 1) Removal of the headrest covers – Once the headrest cover has been removed, please ensure that touch tape tabs are then secured together – This will prevent any damage / fraying of threads, as a result of the touch tape sticking to the threads on the seat cover.
- 2) Removal of the backrest & cushion cover - You must carefully remove the cover evenly on both sides at the same rate. If only one side is raised first, it may result in the stitching tearing (warranty claims will not be accepted if neoprene / stitching is damaged as a result of incorrect removal).
- 3) Removal of the backrest and cushion cover – Once completely removed, re-attach touch tape tabs that were removed. This will prevent any damage / fraying of threads, as a result of the touch tape sticking to the threads on the seat cover.

On-going Maintenance / Care Instructions

- 1) Please use a warm cloth to remove any dirt or grime from the seat cover. Please then allow the seat cover to naturally dry.
- 2) Although our seat covers are incredibly durable, Global Automotive Accessories does not recommend that you vacuum your seat covers. Regular vacuuming over time, may compromise the strength of the seat cover. Please use other suitable methods (such as a dustpan) to remove excessive dust, dog hair etc.

Warranty Claims

Warranty claims are valid for 1 year and will only be accepted if the material or sewing is found to be defective. Photographic evidence must be provided prior to any goods being returned to Global Automotive Accessories for a warranty claim. Failure to follow the fitting instructions will void any warranty claims. Although the material is durable and stretchable in nature, if the cover is fitted too aggressively, like all materials it can tear. Please ensure that the covers are fitted gently and with care.

Any further questions please contact:

Andrew Leask
Owner / Director

Global Automotive Accessories
T: 1300 101 707
E: andrew@globalautomotive.com.au
W: www.globalautomotive.com.au