





COMPANY


OVERVIEW	1
STOCK BLANK APPAREL	3
NEW ARRIVALS	5
CUSTOM MANUFACTURING	7


COLLECTIONS


INDEPENDENT	11
AFX	27
EXPEDITION	39
STANDARD SUPPLY	65
PREMIUM	87
JERSEY	119
YOUTH	123

INFORMATION

STYLE INDEX	133
SWATCHES / PANTONES	135
LOCATIONS / CONTACT	139
DISTRIBUTORS	140

 @independenttradingcompany

 /IndependentTradingCompany

 @indytradingco

 Independent Trading Company



INDEPENDENT TRADING COMPANY

Building on our roots in the action sports industry since 1987, Independent Trading Company is established as a leading manufacturer and supplier of high quality Custom & Blank apparel for Screen Printers and Brands all over the world. Our collection of blanks, ranging from Sweatshirts to Performance Fleece, Jackets, and Fleece Bottoms is readily available in over 60 styles with a wide range of colors. All styles are produced in high quality fabrics for supreme results when printing or embellishing. We provide extensive at-once inventory in two locations, California and Pennsylvania, as well as distributors throughout the USA. In addition to domestic distributors, we also have distributors in Canada, Australia, Chile, Germany, Japan, The UK, Brazil, and Mexico. It's our mission to supply the best quality products for our customers and develop long lasting relationships. Many of our best customers are our first customers.

Quality Sweatshirts.





IND500P & PRM 2002



PULLOVERS



ZIPS



CREWS



BOTTOMS

No minimums on stock orders.

STOCK BLANK APPAREL

Independent Trading Company keeps large reserves of blank sweatshirts, jackets, fleece bottoms, and more in stock so you can order what you need when you need it. Our customers' orders ship as soon as possible so they can be printed or embellished in a matter of days and placed at retail quickly. We are a trusted supplier to hundreds of top clothing brands in the action sports and lifestyle apparel industry. Independent Trading Company makes quality blank garments that brands feel confident embellishing with their label.

MENS • WOMENS • UNISEX • YOUTH • TODDLER



RESORT WEAR

CROPS

PIGMENT DYED

TIE DYE

MINERAL WASH



JACKETS

VESTS



FLANNEL

POLY-TECH

YOUTH & TODDLER

Trusted supplier to hundreds of top clothing brands.



FLEECE PANTS

FLEECE SHORTS

BLANKETS



Quality apparel your customers will love.



NEW STYLE
EXP50F



NEW STYLE
PRM1500Y



NEW STYLE
AFX24CRPC

NEW COLORS & STYLES

We have many great additions to our stock apparel line for 2022 including new styles to our Men's, Women's and Youth collections, plus the expansion of Pigment Dyed, Tie Dye & solid color offerings in many of our popular styles.

NEW COLORS

IND5000P - 6 New Colors	PAGE 13
IND5000C - 6 New Colors	PAGE 15
IND4000 - 2 New Solid Color & 2 New Patterns	PAGE 17
IND20PNT - 8 New Colors	PAGE 21
IND20SRT - 8 New Colors	PAGE 22
SS4500 - 1 New Color	PAGE 67
SS3000 - 4 New Colors	PAGE 71
PRM2500 - 1 New Camo Color	PAGE 89
PRM20PNT - 3 New Solid & 1 New Camo Pattern	PAGE 93
PRM4500 - 7 New Pigment Dye Colors	PAGE 97
PRM3500 - 7 New Pigment Dye Colors	PAGE 99
PRM4500TD - 2 New Tie Dye Colors	PAGE 103
PRM3500TD - 2 New Tie Dye Colors	PAGE 104

NEW STYLES

AFX24CRPC - Crop Crew Neck	PAGE 31
EXP50F - Flannel Shirt	PAGE 49
EXP550Z - Canvas Workwear Jacket	PAGE 51
EXP560V - Canvas Workwear Vest	PAGE 52
PRM20SRT - California Wave Wash Short	PAGE 95
PRM1500Y - Youth Pigment Dyed Pullover	PAGE 125
PRM1500TD - Youth Tie Dye Pullover	PAGE 126



NEW COLORS
AFX64CRP



NEW STYLE
EXP560V



NEW COLORS
IND4000



NEW COLORS
PRM4500

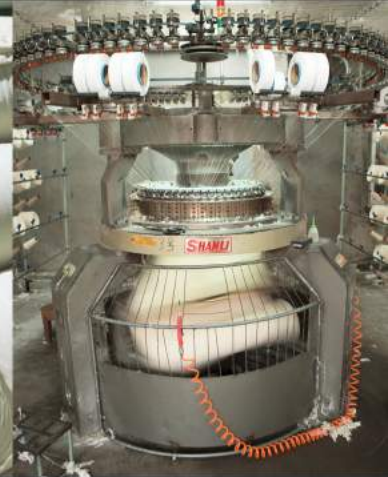
Online Wholesale Ordering:

b2b.independenttradingco.com

When you place wholesale orders online, your order goes instantly to the warehouse to be packed and shipped.



High quality, consistent manufacturing, on time delivery, great customer service & competitive prices.



- Design & Development
- Pattern Making
- Knitting
- Dyeing

- Cutting
- Embellishing
- Sewing
- Quality Control

- Packaging
- Import & Shipping
- Receiving
- Delivery

CUSTOM MANUFACTURING

Independent Trading Company has manufactured custom apparel in China for more than 30 years. We have headquarters in San Clemente, California and Ningbo, China. Our Production Managers in California & China are experienced and can assist with every step of the production process, from product

development to delivery. We guarantee high quality and consistent manufacturing, on time delivery, great customer service, and competitive prices. From sweatshirts & tees, to woven jackets & flannels, we have the infrastructure and expertise to manufacture anything you design.

MINIMUM ORDER QUANTITY (MOQ) 600pcs Per Color & 1,200pcs Per Style
(MOQs are subject to change.)

LEAD TIMES After pre-production approval, Typical lead times are 90-100 days to exit china.
(Lead Times are subject to change.)

DESIGN & DEVELOPMENT

Our team of Production Managers in California and Ningbo China are experts at taking your ideas and turning them into finished garments. Independent Trading Company has an extensive archive of design inspiration to help with development from body styles, fabrics, and embellishment techniques. It doesn't end with the custom garment... We also have a library full of trims from zipper pulls, patches, pins, labels, drawcords, hangtags, and more.

MANUFACTURING

Independent Trading Company has manufactured apparel in Asia for 30 years. In that time we have cultivated and maintained long-term partnerships with hand-selected factories in each of our product categories. The factory that built the first IND4000 in 1987 still makes them today, 30 years later. These long term factory partnerships have streamlined and perfected our production process giving us an edge in quality, consistency, and price. The difference from Independent Trading Company and other factories in China is we have our Stock Blank Apparel Collection where we make Millions of garments each year. The sheer volume of our Stock Production requires a huge infrastructure of Knitting Machines, Dye Houses, and Cut & Sew facilities. Keeping our factories busy all year round ensures us the best prices on our Custom Apparel which we pass along to you.

IMPORT & SHIPPING

The large volume of apparel that Independent Trading imports each year, assures our customers efficient customs clearance and the most reliable, economical international and domestic freight pricing. Our team handles all documentation for quick customs clearance and arranges ocean and air freight from Asia to the U.S. and other worldwide destinations.

continue to Custom Examples >

Contact us to request a meeting:

info@independenttradingco.com • Call Toll Free: 877.366.9911 • Local: 949.366.9911

Custom

EXAMPLES

Not only do we provide quality blank apparel to the top brands in the US, we also manufacture their custom apparel. From sweatshirts & tees, to woven jackets & flannels, we have the infrastructure and expertise to manufacture anything you design. We guarantee high quality and consistent manufacturing, on time delivery, and prices that can't be beat.



INDEPENDENT
COLLECTION

Benchmark in style, quality & fit.



IND4000

IND5000P

Men's Premium 450gm Heavyweight Cross-Grain Hoodie

Sizes: XS-3XL

13.5oz (450gm) 3-end fleece • ring spun cotton • 100% cotton face yarns on solid colors • 20 singles face yarn • double fleece lined hood • antique silver eyelets • heavy duty 100% cotton shoelace drawcord w/ antique silver tips • double ribbing side panels • reverse coverstitch sewing on all seams • body and hood panels sewn Cross-Grain • 520gm 100% cotton 1x1 ribbing at cuff and waistband • tear away woven neck label



Legend
450gm HEAVYWEIGHT

- Double Fleece Lined Hood
- Antique Silver Eyelets
- 450gm/13.5oz Fleece
- Heavy Duty Shoelace Drawcords
- Antique Silver Drawcord Tips
- Cross-Grain Body Panels
- Double Layer 1x1 520gm 100% Cotton Ribbing Side Panels
- Reverse Coverstitch On All Seams
- 1x1 520gm 100% Cotton Ribbing

IND5000C

Men's Premium 450gm Heavyweight Cross-Grain Crew

Sizes: XS-3XL

13.5oz.(450gm) 3-end fleece • ring spun cotton • 100% cotton face yarns on solid colors • 20 singles face yarn • double ribbing side panels • reverse coverstitch sewing on all seams • body panels sewn Cross-Grain • 520gm 100% cotton 1x1 ribbing at cuff and waistband • tear away woven neck label





All-Time Classic
The go-to blank sweatshirt for brands all over the world!



IND4000

Men's Heavyweight Hooded Pullover

Sizes: XS-3XL (4XL & 5XL available in select colors.)

10oz. (330gm) cotton/polyester blend fleece • Solid Colors: 70% Cotton/30% Polyester with 100% cotton 32 singles face yarn for supreme printability and softness • Heather Colors: 52% cotton/48% polyester • Camo Colors: 75% cotton/25% polyester with 100% cotton 32 singles face yarn • Safety Colors: 52% cotton/48% polyester • fleece lined hood • split stitch double needle sewing on all seams • twill neck tape • 1x1 ribbing at cuffs and waistband • nickel eyelets • generous fit



IND4000Z

Men's Heavyweight Zip Hood

Sizes: XS-3XL (4XL, 5XL & 6XL available in select colors.)

10oz (330gm) cotton/polyester blend fleece • Solid Colors: 70% cotton/30% polyester with 100% Cotton 32 singles face yarn for supreme printability and softness • Heather Colors: 52% cotton/48% polyester • Camo Colors: 75% cotton/25% polyester with 100% cotton 32 singles face yarn • fleece lined hood • split stitch double needle sewing on all seams • twill neck tape • 1x1 ribbing at cuffs and waistband • nickel eyelets • #5 nickel kissing zipper • generous fit



BLACK
(XS-6XL)

CHARCOAL HEATHER

SOLID CHARCOAL

GUNMETAL HEATHER

GREY HEATHER
(XS-6XL)

NAVY
(XS-6XL)



MAROON
(XS-2XL)

ARMY

SANDSTONE

RED

ROYAL

FOREST CAMO



IND20PNT

Men's Midweight Fleece Pant

Sizes: XS-2XL

8.5oz (280gm) cotton/polyester blend fleece • ring spun cotton • elastic waistband with shoestring drawcord • 1x1 ribbing at ankle cuffs • sewn eyelets • sewn fly detail • back pocket • jersey lined handpockets • relaxed fit



IND20SRT

Men's Midweight Fleece Short

Sizes: XS-2XL



8.5oz (280gm) cotton/polyester blend fleece • ring spun cotton • elastic waistband with shoestring drawcord • sewn eyelets • sewn fly detail • back pocket • jersey lined handpockets • relaxed fit • tapered knee opening



IND40RP

Men's Lightweight Raglan Hooded Pullover

Sizes: XS-3XL

7oz (230gm) cotton/polyester blend fleece • raglan sleeves • jersey lined hood • split stitch double needle sewing • twill neck tape • 1x1 ribbing at cuffs and waistband • nickel eyelets • slim fit

Screen Printers Please Note: This fabric is not made of 100% cotton face yarn.



LIGHTWEIGHT RAGLAN SLEEVES TEAR AWAY NECK LABEL



HEAVYWEIGHT KISSING ZIPPER TEAR AWAY NECK LABEL



GUNMETAL HEATHER/BLACK GUNMETAL HEATHER/CHARCOAL HEATHER GUNMETAL HEATHER/CLASSIC NAVY HEATHER GUNMETAL HEATHER/BURGUNDY HEATHER GUNMETAL HEATHER/ARMY HEATHER



CHARCOAL HEATHER/BLACK CHARCOAL HEATHER/BURGUNDY HEATHER CHARCOAL HEATHER/ARMY HEATHER



IND45UVZ

Unisex Heavyweight Varsity Zip Hood

Sizes: XS-3XL

10oz (330gm) cotton/polyester blend fleece • 30 singles cotton/polyester blend face yarn • fleece lined hood • split stitch double needle sewing on all seams • twill neck tape • 1x1 jacquard ribbing at cuffs & waistband • gunmetal eyelets • #5 nylon kissing zipper • slim unisex fit



CHARCOAL HEATHER/BLACK GUNMETAL HEATHER/CHARCOAL HEATHER BLACK/GUNMETAL HEATHER CLASSIC NAVY/GUNMETAL HEATHER CARDINAL/GUNMETAL HEATHER



INDDUFBAG

Day Tripper 29L Duffel Bag

Sizes: 20.5"x 10.5" - 29 Liters

10.5oz (360 gm) 100% polyester • waterproof interior PVC coating • carrying handles • removable shoulder strap



BLACK



BLACK / CHECKER STRAPS



POLKA DOT



CHEETAH



BLACK CHEETAH



SOUTHWEST



TIGER CAMO



FOREST CAMO



BLACK CAMO



WHITE CAMO



DAY
TRIPPER





COLLECTION

Lightweight, ultra-soft & slim fit.



AFX90UNZ

AFX64CRP

Women's Lightweight Crop Hooded Pullover

Sizes: XS-2XL

6.5oz (210gm) pre-laundered, cotton/polyester blend fleece • 100% cotton 40 singles face yarn for supreme printability and softness • split stitch double needle sewing on all seams • 3/8" flat drawcord • twill neck tape • 1x1 ribbing at cuffs • sewn eyelets • tear away neck label



BLACK



GREY HEATHER



WHITE



BONE



BLUSH



SAGE



TIE DYE
COTTON CANDY



BLACK CAMO



**CROP
HOODIE**

Bold, Fashion-Forward
garment that's fun & stylish



NEW

AFX24CRPC

Women's Lightweight Crop Crew Neck

Sizes: XS-2XL

6.5oz (210gm) pre-laundered, cotton/polyester blend fleece
• 100% cotton 40 singles face yarn for supreme printability and softness • split stitch double needle sewing on all seams
• twill neck tape • 1x1 ribbing at cuffs • tear away neck label



CROP CREW

Bold, Fashion-Forward
garment that's fun & stylish.



AFX90UN

Unisex Lightweight Fitted Hooded Pullover

Sizes: XS-3XL

6.5oz (210gm) pre-laundered cotton/polyester blend fleece • 100% cotton 40 singles face yarn for supreme printability and softness • unlined hood • split stitch double needle sewing on all seams • twill neck tape • 1x1 ribbing at cuffs, waistband & pocket openings • nickel eyelets • plastic tipped white round drawcord • slim unisex fit



Classic Styling & Premium Fabric

The best printing fabric in our line
A screen printer's best friend



AFX90UNZ

Unisex Lightweight Fitted Zip Hood

Sizes: XS-3XL

6.5oz (210gm) pre-laudered cotton/polyester blend fleece • 100% cotton 40 singles face yarn for supreme printability and softness • unlined hood • split stitch double needle sewing on all seams • twill neck tape • 1x1 ribbing at cuffs, waistband & pocket openings • nickel eyelets • #5 white coil kissing zipper with nickel pull • plastic tipped white round drawcord • slim unisex fit



BLACK CHARCOAL HEATHER GUNMETAL HEATHER



CLASSIC NAVY SLATE BLUE SANDSTONE ALPINE GREEN CURRANT RUST DUSTY ROSE (XS-2XL)



MISTY BLUE (XS-2XL) RED (XS-2XL) COBALT TURQUOISE FOREST CAMO BLACK CAMO

Classic Styling & Premium Fabric

The best printing fabric in our line. A screen printers best friend.



ECO-FRIENDLY



RECYCLED



SOFT TOUCH



SHIPS SUPER FAST



SOFT LIPS



100% WASHABLE

NO IRON REQUIRED



AFX4000

Men's Lightweight Fitted Hooded Pullover

Sizes: XS-3XL

6.5oz. (210gm) pre-laundered, cotton/polyester blend fleece • 100% cotton 40 singles face yarn for supreme printability and softness • jersey lined hood • split stitch double needle sewing on all seams • twill neck tape • 1x1 ribbing at cuffs, waistband & pocket openings • nickel eyelets • slim fit



BLACK CHARCOAL HEATHER GUNMETAL HEATHER GREY HEATHER WHITE



NAVY ARMY GARNET RED HEATHER TURQUOISE HEATHER



The Best Printing Fabric In Our Line
A screen printers best friend.

AFX4000Z

Men's Lightweight Fitted Zip Hood

Sizes: XS-3XL

6.5oz. (210gm) pre-laundered, cotton/polyester blend fleece • 100% cotton 40 singles face yarn for supreme printability and softness • jersey lined hood • split stitch double needle sewing on all seams • twill neck tape • 1x1 ribbing at cuffs, waistband & pocket openings • nickel eyelets • #5 nickel kissing zipper • slim fit



BLACK CHARCOAL HEATHER GUNMETAL HEATHER WHITE NAVY

Expedition
COLLECTION



Warm, functional, durable & quality.

EXP50F

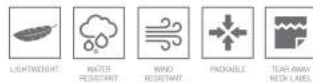
EXP54LWP

Men's Lightweight Pullover Windbreaker Anorak Jacket

Sizes: XS-3XL (XXS Available in select colors.)

62gm 100% polyester lightweight water resistant fabric • matte finish eyelets and zippers • #4 zipper with zipper pull & rubber zipper pull tab • reversed zipper tape • fine mesh hood liner • three panel hood • blizzard neck • self neck tape • pouch pocket • bungee toggle at waistband • elastic cuffs • locker loop in center back neck

Screen Printers Please Note:
This garment is 100% Polyester. Poly inks are recommended. Please do your own testing.



BLACK



ARMY / BLACK ZIP



SMOKE / BLACK ZIP



AQUA
(XXS-3XL)



BLUSH
(XXS-3XL)



SMOKE / GRAPHITE



CLASSIC NAVY / RED



BLACK CAMO



EXP54LWZ

Men's Lightweight Windbreaker Jacket

Sizes: XS-3XL (XXS Available in select colors.)

82 gm 100% polyester lightweight water resistant fabric • matte finish eyelets and zippers • #4 zipper with zipper pull & rubber zipper pull tab • reversed zipper tape • fine mesh hood liner • three panel hood • blizzard neck • self neck tape • welt pockets with mesh pocket bags • bungee toggle at waistband • elastic cuffs • locker loop in center back neck

Screen Printers Please Note:
This garment is 100% Polyester. Poly inks are recommended. Please do your own testing.



BLACK CLASSIC NAVY GRAPHITE MAROON



RED SAFETY ORANGE SAFETY YELLOW KHAKI / WHITE



AQUA / WHITE ZIP (XXS-3XL) BLUSH / WHITE ZIP (XXS-3XL) BLACK / GRAPHITE CLASSIC NAVY / SADDLE



CLASSIC NAVY / ARMY CLASSIC NAVY / ROYAL MAROON / CLASSIC NAVY BLACK / FOREST CAMO



FOREST CAMO BLACK CAMO WHITE CAMO



EXP64CRP

Women's Lightweight Crop Windbreaker

Sizes: XS-2XL

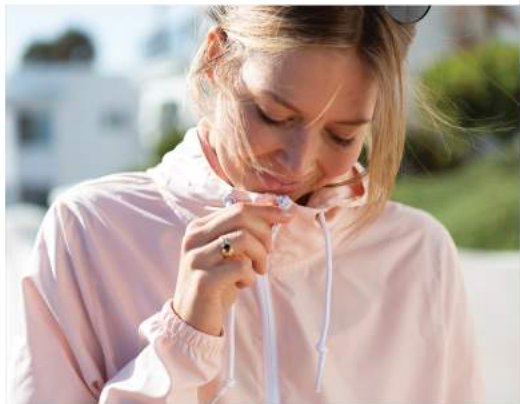
82gm 100% polyester lightweight water resistant fabric • matte finish eyelets and zippers • zipper pull & zipper pull string • reversed zipper tape • fine mesh hood liner • three panel hood • blizzard neck • self neck tape • bungee toggle at waistband • elastic cuffs • locker loop in center back neck

Screen Printers Please Note:
This garment is 100% Polyester. Poly inks are recommended. Please do your own testing.



**CROP
HOODIE**

Bold, Fashion-Forward
garment that's fun & stylish



Wear it in, pack it out.
Packable Pocket



EXP52BMR

Men's Lightweight Bomber Jacket

Sizes: XS-3XL

82gm • 100% polyester lightweight water resistant fabric • 100% polyester 1x1 ribbing • waterproof pressure resistance: 600 mm • #5 vislon zipper • self neck tape • welt pockets • locker loop in center back

Screen Printers Please Note:
This garment is 100% Polyester. Poly inks are recommended. Please do your own testing.



BLACK



ARMY



BLACK / WHITE



NEW

EXP50F

Men's Flannel Shirt

Sizes: XS-3XL

200gm cotton/polyester blend flannel • button closure • double front pockets with top flap opening • rollup sleeve vents • tear away neck label



TEAR AWAY
NECK LABEL



CHARCOAL HEATHER /
BLACK



GREY HEATHER /
BLACK



RED / BLACK



OLIVE / BLACK



NEW

EXP550Z

Men's Insulated Canvas Workwear Jacket

Sizes: XS-3XL

HYPER-LOFT
INSULATION



360gm 100% cotton canvas shell • 60gm hyper-loft poly fill insulation • 100% polyester lining • heavy duty antique brass zipper front closure • antique brass eyelets • 3 panel hood • articulated elbows • 100% cotton drawcord • interior back neck locker patch • 2x2 ribbing at cuffs & waistband • triple needle stitching • #3 hidden dress zipper for concealed embroidery access • tear away neck label



BLACK

SADDLE

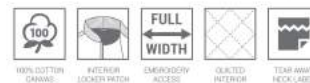
EXP560V

NEW

Men's Insulated Canvas Workwear Vest

Sizes: XS-3XL

HYPER-LOFT
INSULATION



360gm 100% cotton canvas shell • 60gm hyper-loft poly fill insulation • 100% polyester lining • heavy duty antique brass 6 snap front closure • hyper-loft insulation • interior back neck locker patch • 2x2 ribbing at collar • #3 hidden dress zipper for concealed embroidery access • tear away neck label



BLACK

SADDLE



Concealed Embroidery Access

Our Workwear Jackets have a full width hidden zipper for screenprint & embroidery access to easily print multi-color logos & hide embroidery backing on the inside of the garment.



Concealed Embroidery Access

EXP100PFZ

Men's Hyper-Loft Puffy Jacket

Sizes: XS-3XL

HYPER-LOFT INSULATION



100% nylon exterior shell • 60gm hyper-loft poly fill insulation • 100% polyester lining • #5 reverse coil zippers at chest and pockets • packable pocket with #3 reverse coil zipper • capped elastic sleeve cuff • locker loop • plastic cinche toggle • tear away neck label • concealed chest pocket for embroidery access



BLACK

Concealed
Chest Pocket
Embroidery
Access

Wear it in.
Pack it out.
Packable Pocket



EXP200PFZ

Women's Hyper-Loft Puffy Jacket

Sizes: XS-2XL

HYPER-LOFT INSULATION



100% nylon exterior shell • 60gm hyper-loft poly fill insulation • 100% polyester lining • #5 reverse coil zippers at chest and pockets • packable pocket with #3 reverse coil zipper • capped elastic sleeve cuff • locker loop • plastic cinche toggle • tear away neck label • concealed chest pocket for embroidery access



BLACK

Concealed
Chest Pocket
Embroidery
Access

Wear it in.
Pack it out.
Packable Pocket

EXP120PFV

Men's Hyper-Loft Puffy Vest

Sizes: XS-3XL

HYPER-LOFT INSULATION



100% nylon exterior shell • 60gm hyper-loft poly fill insulation • 100% polyester lining • #5 reverse coil zippers at chest and pockets • packable pocket with #3 reverse coil zipper • capped elastic arm opening • locker loop • plastic cinche toggle • tear away neck label • concealed chest pocket for embroidery access



BLACK

Concealed
Chest Pocket
Embroidery
Access

Wear it in.
Pack it out.
Packable Pocket



EXP220PFV

Women's Hyper-Loft Puffy Vest

Sizes: XS-2XL

HYPER-LOFT INSULATION



100% nylon exterior shell • 60gm hyper-loft poly fill insulation • 100% polyester lining • #5 reverse coil zippers at chest and pockets • packable pocket with #3 reverse coil zipper • capped elastic arm opening • locker loop • plastic cinche toggle • tear away neck label • concealed chest pocket for embroidery access



BLACK

Concealed
Chest Pocket
Embroidery
Access

Wear it in.
Pack it out.
Packable Pocket

EXP95NB

Men's Heavyweight Windbreaker Hooded Jacket

Sizes: XS-3XL

100% nylon 330D • waterproof coating: 10,000 MM • inner pu coating • breathability: 5,000 G/M² • self neck tape • unlined hood • antique brass eyelets (Black/Black Colorway = Matte Black Metal Eyelets) • antique brass 6 snap front closure (Black/Black Colorway = Matte Black Metal Snaps) • elastic cuffs • underarm grommets • drawcord closure at hood and bottom opening • standard fit



EXP99CNB

Men's Heavyweight Windbreaker Coaches Jacket

Sizes: XS-3XL

100% nylon 330D • waterproof coating: 10,000 MM • inner pu coating • breathability: 5,000 G/M² • self neck tape • antique brass eyelets (Black/Black Colorway = Matte Black Metal Eyelets) • antique brass 6 snap front closure (Black/Black Colorway = Matte Black Metal Snaps) • elastic cuffs • underarm grommets • drawcord closure at bottom opening • standard fit



EXP94NAW

Men's Heavyweight Water-Resistant Windbreaker Anorak Jacket

Sizes: XS-3XL

100% nylon 330D • waterproof coating: 10,000 MM • inner pu coating
breathability: 5,000 G/M² • dtm neck taping • #5 dtm body coil zipper
• matte metal zipper pull • rubber zipper pull tab • zipper garage • fine
mesh hood liner • matte nickel metal eyelets 3 panel hood • scuba
neck • round poly drawstring • hidden snaps inside front pocket flap
• side slit pockets • tightening toggle at waistband • elastic cuffs



EXP35SSZ

Men's Poly-Tech Soft Shell Jacket

Sizes: XS-3XL



13.8oz/450gm total weight • 300 gm 100% water proof polyester shell bonded to graphite colored 160gm micro fleece lining • waterproof coating: 20,000 MM • #5 black reverse coil water resistant zippers • gunmetal zipper pull with black zipper pull tab • 3 panel hood • scuba neck • left chest pocket and welt pockets • zipper garage • toggles at hood and bottom side seams • antique nickel eyelets • media pocket with eyelet

Screen Printers Please Note: Low cure poly ink & poly blocker recommended. Keep garment temperature under 300°



BLACK



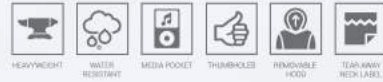
CLASSIC NAVY



GRAPHITE



Comfort & Warmth
Concealed embroidery access for embellishing



EXP80PTZ

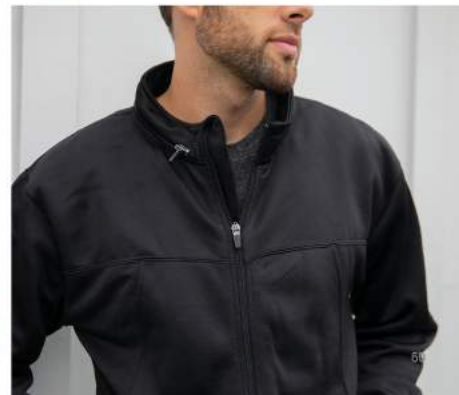
Men's Heavyweight Poly-Tech Zip Hood

Sizes: XS-2XL

10oz (330gm) polyester/cotton water-resistant fleece body with 100% polyester pique panels • 100% anti-pill polyester face • removable zip off hood with interior cadet collar • 1x1 ribbing at cuffs and waistband • antique nickel eyelets • #5 dtm coil exposed zipper • antique nickel tipped dtm flat drawcord • thumbholes at cuffs • media pocket & eyelet in front welt pocket • standard fit



BLACK





EXP60PAZ

Women's Lightweight Poly-Tech Zip

Sizes: XS-3XL



5.5oz. (190gm) 100% poly fleece • #5 dtm exposed coil zipper • antique nickel zipper pull with dtm zipper pull tab • zipper garage • hidden stash pocket • thumbholes at cuffs • slim fit



BLACK

GUNMETAL HEATHER

WHITE

ASTER BLUE

LAPIS GREEN

CORAL

EXP70PTZ

Unisex Lightweight Poly-Tech Zip Track Jacket

Sizes: XS-2XL

6.5oz. (220gm) 100% poly fleece • 2 stripes on raglan sleeves • 1x1 ribbing at cuffs & waistband • #5 contrast coil kissing zipper with nickel pull • twill neck tape • media pocket and eyelet • regular fit
Please Note: Colorway Black/Black has no stripes.



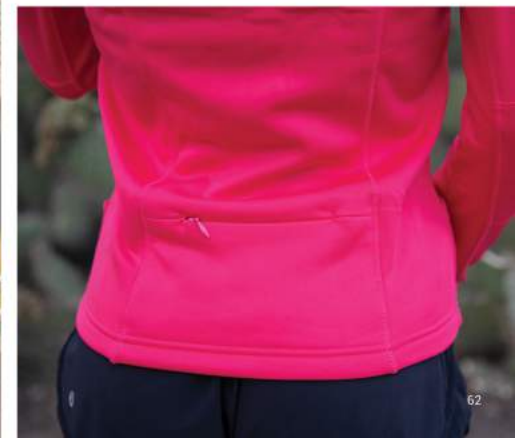
BLACK/BLACK

BLACK

CLASSIC NAVY

GUNMETAL HEATHER

BRICK RED



EXP90SHZ

Unisex Heavyweight Sherpa Lined Zip Hood

Sizes: XS-2XL



HEAVYWEIGHT SHERPA LINED UNISEX CONTRAST ZIPPER TAPE CONTRAST DRAWCORD DRAWCORD



THUMBHOLE MEDIA POCKET TEAR AWAY NECK LABEL

12.3oz total weight • 7.5oz (250gm) pre-laundered cotton/polyester blend french terry • 4.7 oz (160 gm) 100% polyester sherpa lined interior • 32 singles face yarn for supreme printability and softness • split stitch double needle sewing • 1x1 ribbing at cuffs & waistband • antique nickel eyelets • antique nickel tipped flat drawcord • 2 drawcords (1-DTM & 1-Natural) • #5 antique nickel exposed zipper • media pocket & eyelet in front pocket • thumbholes at cuffs • twill neck tape • unisex fit



BLACK CHARCOAL HEATHER



SALT & PEPPER BURGUNDY HEATHER



NAVY HEATHER SKY HEATHER



HEAVYWEIGHT SHERPA LINED TEAR AWAY NECK LABEL



EXP40SHZ

Men's Heavyweight Sherpa Lined Zip Hood

Sizes: S-4XL

14 oz. total weight • 8.5oz. (280gm) cotton/polyester blend fleece exterior • 5.5 oz (180 gm) 100% polyester sherpa lined interior • 100% cotton 32 singles face yarn for supreme printability and softness • split stitch double needle sewing on all seams • twill neck tape • 1x1 ribbing at cuffs & waistband • antique nickel eyelets • #5 antique nickel exposed zipper • generous fit



BLACK/NATURAL

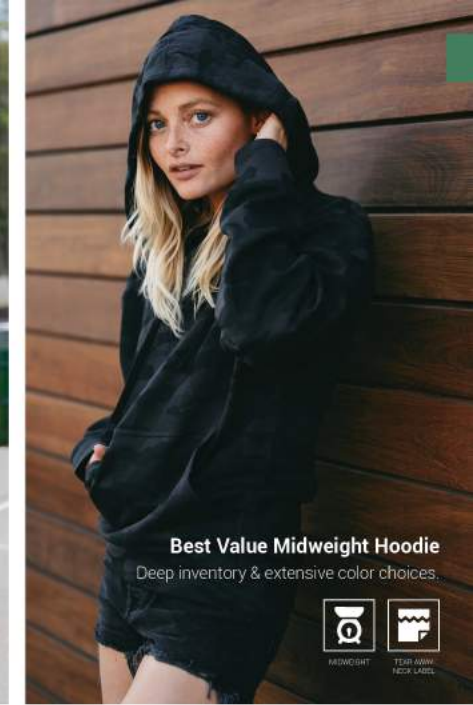


**STANDARD
SUPPLY**
COLLECTION

Standard in style, quality & fit.



SS1000



Best Value Midweight Hoodie
 Deep inventory & extensive color choices.



SS4500

Men's Midweight Hooded Pullover

Sizes: XS-3XL (4XL & 5XL available in select colors.)

8.5oz (280gm) cotton/polyester blend fleece • Solid Colors & Gunmetal Heather: 80% cotton/20% polyester with 100% cotton 20 singles face yarn for supreme print ability and softness • Grey Heather: 75% cotton/25% polyester • All other Heather Colors: 55% cotton/45% polyester • jersey lined hood • split stitch double needle sewing on all seams • twill neck tape • 1x1 ribbing at cuffs & waistband • metal eyelets • standard fit



BLACK (XS-5XL) CHARCOAL HEATHER (XS-5XL) SOLID CHARCOAL GUNMETAL HEATHER



GREY HEATHER (XS-5XL) WHITE (XS-5XL) CLASSIC NAVY CLASSIC NAVY HEATHER MAROON (XS-5XL) ALPINE GREEN ARMY (XS-5XL)



ARMY HEATHER (XS-5XL) BROWN SADDLE SANDSTONE (XS-5XL) BONE (XS-5XL) ROYAL (XS-5XL) ROYAL HEATHER



FOREST GREEN KELLY GREEN KELLY GREEN HEATHER (XS-2XL) RED (XS-5XL) ORANGE GOLD (XS-5XL) PURPLE



LAVENDER (XS-5XL) LIGHT PINK (XS-5XL) PEACH LIGHT YELLOW (XS-5XL) MINT (XS-5XL) BLUE AQUA (XS-5XL) SAFETY YELLOW (XS-5XL)



SAFETY ORANGE (XS-5XL) NEON PINK FOREST CAMO (XS-5XL) BLACK CAMO (XS-5XL)

SS4500Z

Men's Midweight Zip Hood

Sizes: XS-3XL

8.5oz (280gm) cotton/polyester blend fleece • Solid Colors & Gunmetal Heather: 80% cotton/20% polyester with 100% cotton 20 singles face yarn • Grey Heather: 75% cotton/25% polyester • All other Heather Colors: 55% cotton/45% polyester • jersey lined hood • split stitch double needle sewing on all seams • twill neck tape • 1x1 ribbing at cuffs & waistband • metal eyelets • #5 metal kissing zipper • standard fit



BLACK CHARCOAL HEATHER SOLID CHARCOAL GUNMETAL HEATHER GREY HEATHER WHITE



NAVY CLASSIC NAVY HEATHER (XS-2XL) MAROON ALPINE GREEN ARMY



ARMY HEATHER (XS-2XL) SANDSTONE ROYAL (XS-2XL) SAFETY YELLOW FOREST CAMO



SS3000

Men's Midweight Crew Neck

Sizes: XS-3XL (4XL & 5XL available in select colors.)

8.5oz (280gm) cotton/polyester blend fleece • Solid Colors: 8 Gunmetal Heather: 80% cotton/20% polyester with 100% cotton 20 singles face yarn • Grey Heather: 75% cotton/25% polyester • All other Heather Colors: 55% cotton/45% polyester • split stitch double needle sewing on all seams • twill neck tape • 1x1 ribbing at collar, cuffs and waistband • standard fit



SS1000

Unisex Lightweight Loopback Terry Hooded Pullover

Sizes: XS-3XL

7.5oz (250gm) cotton/polyester blend • loopback terry fabric • 20 singles face yarn • antique silver eyelets • double shoelace drawcords w/ antique silver metal tips • twill neck tape • tear away neck label • 1x1 ribbing at cuffs & waistband • unisex fit



BLACK

CHARCOAL HEATHER

ATHLETIC HEATHER

WHITE

MISTY BLUE

ROSE



INDIGO

PORT

OLIVE

HARVEST GOLD

SAND

BONE



Double Drawcords!
Ditch the one you don't like,
or rock both.

SS1000Z

Unisex Lightweight Loopback Terry Zip Hood

Sizes: XS-3XL

7.5oz. (250gm) cotton/polyester blend • loopback terry fabric • 20 singles face yarn • antique silver zipper & zipper pull • antique silver eyelets • double shoelace drawcords w/ antique silver metal tips • twill neck tape • tear away neck label • 1x1 ribbing at cuffs & waistband • unisex fit



BLACK

CHARCOAL HEATHER

ATHLETIC HEATHER

WHITE

MISTY BLUE

ROSE



INDIGO



PORT



OLIVE



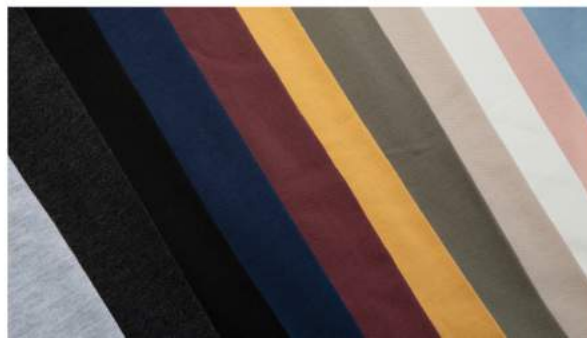
HARVEST GOLD



SAND



BONE



Double Drawcords!
Ditch the one you don't like, or rock both.

SS1000C

Unisex Lightweight Loopback Terry Crew

Sizes: XS-3XL

7.5oz (250gm) cotton/polyester blend • loopback terry fabric • 20 singles face yarn • twill neck tape • tear away neck label • 1x1 ribbing at cuffs & waistband • unisex fit



Loopback Terry
Unique fabric, modern colors,
and everyday comfort.

SS008

Women's Midweight Hooded Pullover

Sizes: XS-2XL

8.5oz (280gm) cotton/polyester blend fleece • Solid Colors: 80% cotton/20% polyester with 100% cotton 20 singles face yarn for supreme print ability and softness • Grey Heather: 75% cotton/25% polyester • Charcoal Heather: 55% Cotton/45% Polyester • jersey lined hood • split stitch double needle sewing on all seams • twill neck tape • 1x1 ribbing at cuffs & waistband • sewn eyelets • tear away neck label • standard fit



BLACK

CHARCOAL HEATHER

GREY HEATHER

WHITE



Best Value Midweight Hoodie
Great price & great quality

SS650

Women's Lightweight Hooded Pullover

Sizes: XS-2XL

6.5oz (220gm) cotton/polyester blend fleece • cotton/polyester blend 24 singles face yarn • unlined hood • split stitch double needle sewing • twill neck tape • 1x1 ribbing at cuffs & waistband • metal eyelets • slim fit

Screen Printers Please Note:
This fabric is not made of 100% cotton face yarn.



SS650Z

Women's Lightweight Zip Hood

Sizes: XS-2XL

6.5oz (220gm) cotton/polyester blend fleece • cotton/polyester blend 24 singles face yarn • unlined hood • split stitch double needle sewing • twill neck tape • 1x1 ribbing at cuffs & waistband • metal eyelets • #5 dtm coil kissing zipper • slim fit

Screen Printers Please Note:
This fabric is not made of 100% cotton face yarn.



SS240

Women's Lightweight Crew

Sizes: XS-2XL

6.5oz (220gm) cotton/polyester blend fleece • cotton/polyester blend 24 singles face yarn • split stitch double needle sewing • twill neck tape • 1x1 ribbing at cuffs & waistband • 1x1 rib capped neckline • slim fit

Screen Printers Please Note:

This fabric is not made of 100% cotton face yarn.



BLACK

CHARCOAL HEATHER

GUNMETAL HEATHER

MISTY BLUE

DUSTY ROSE

LIGHT BLACKBERRY





Specialty fabrics, unique trim details & colors.



PRM4500TD

PRM2500

Women's California Wave Wash Hooded Pullover

Sizes: XS-2XL

7.0oz (230gm) 55% cotton/45% polyester blend • 3-end fleece • raglan sleeves
• blind stitch • cover stitch sewing • sewn eyelets • twill neck tape • standard fit

Screen Printers Please Note:

This fabric is not made of 100% cotton face yarn.



LEIGHTWIGHT RAGLAN SLEEVES CALIFORNIA WAVE WASH



BLACK

SHADOW

BONE

BLUSH



DUSTY ROSE

MISTY BLUE

SAGE

FOREST CAMO HEATHER

BLACK CAMO HEATHER



California Wave Wash
One of a kind fit, feel,
and color tone.

PRM2500Z

Women's California Wave Wash Zip Hood

Sizes: XS-2XL

7.0oz. (230gm) 55% cotton/45% polyester blend • 3-end fleece • raglan sleeves • blind stitch • coverstitch sewing • sewn eyelets • twill neck tape • antique nickel zipper • standard fit

Screen Printers Please Note:

This fabric is not made of 100% cotton face yarn.



PRM2000

Women's California Wave Wash Crew

Sizes: XS-2XL

7.0oz. (230gm) 55% cotton/45% polyester blend • 3-end fleece • raglan sleeves • blind stitch • coverstitch sewing • standard fit

Screen Printers Please Note:

This fabric is not made of 100% cotton face yarn.



BLACK SHADOW MISTY BLUE SAGE DUSTY ROSE BLUSH BONE



BLACK SHADOW MISTY BLUE SAGE DUSTY ROSE BLUSH BONE



California Wave Wash

One of a kind fit, feel, and color tone.



PRM20PNT

Women's California Wave Wash Sweatpant

Sizes: XS-2XL



LIGHTWEIGHT



CALIFORNIA WAVE WASH

7.0oz (230gm) 55% cotton/45% polyester blend • 3-end fleece • blind stitch + coverstitch sewing • elastic waistband with shoestring drawcord • 1x1 ribbing at ankle cuffs • sewn eyelets • jersey lined hand pockets • standard fit

Screen Printers Please Note:

This fabric is not made of 100% cotton face yarn.



BLACK



SHADOW



MISTY BLUE

NEW



SAGE



DUSTY ROSE



BLUSH

NEW

NEW



BONE



FOREST CAMO HEATHER



BLACK CAMO HEATHER

NEW



California Wave Wash

One of a kind fit, feel, and color tone.



NEW PRM20SRT

Women's California Wave Wash Short
Sizes: XS-2XL



7.0oz. (230gm) 55% cotton / 45% polyester blend • 3-end fleece • blind stitch • coverstitch sewing • elastic waistband with shoestring drawcord • sewn eyelets • jersey lined hand pockets • standard fit
Screen Printers Please Note:
This fabric is not made of 100% cotton face yarn.



BLACK SHADOW



MISTY BLUE SAGE



DUSTY ROSE BLUSH



BONE FOREST CAMO HEATHER



BLACK CAMO HEATHER



California Wave Wash
One of a kind fit, feel,
and color tone.

PRM4500

Unisex Midweight Pigment Dyed Hooded Pullover

Sizes: XS-3XL

9oz. (300gm) cotton/polyester blend fleece • 100% cotton 30 singles face yarn • jersey lined hood • split stitch double needle sewing on all seams • twill neck tape • 1x1 ribbing at cuffs and waistband • sewn eyelets • standard fit



PIGMENT DYED

EACH SWEATSHIRT HAS UNIQUE VINTAGE CHARACTER WE ACCOMPLISH WITH OUR SMALL BATCH GARMENT PIGMENT DYEING PROCESS.



PRM3500

Unisex Midweight Pigment Dyed Crew Neck

Sizes: XS-3XL

9oz (300gm) cotton/polyester blend fleece • 100% cotton 30 singles face yarn • split stitch double needle sewing on all seams • twill neck tape • 1x1 ribbing at cuffs and waistband • standard fit



PIGMENT DYED

EACH SWEATSHIRT HAS UNIQUE VINTAGE CHARACTER WE ACCOMPLISH WITH OUR SMALL BATCH GARMENT PIGMENT DYEING PROCESS.



PRM50PTPD

Men's Pigment Dyed Fleece Pant

Sizes: XS-2XL

9oz (300 gm) cotton/polyester blend • ring spun cotton • 100% cotton 30 singles face yarn • elastic waistband • flat drawcord • 1x1 ribbing at ankle cuffs • sewn eyelets • sewn fly detail • back pocket • Jersey lined hand pockets • relaxed fit



PIGMENT BLACK PIGMENT MAROON PIGMENT SLATE BLUE



PIGMENT ALPINE GREEN PIGMENT SANDSTONE PIGMENT LIGHT BLUE



PIGMENT MINT PIGMENT PINK PIGMENT YELLOW



PREPARED FOR DYE



PIGMENT DYED



PRM50STPD

Men's Pigment Dyed Fleece Short

Sizes: XS-2XL

9oz (300 gm) cotton/polyester blend • ring spun cotton • 100% cotton 30 singles face yarn • elastic waistband • flat drawcord • sewn eyelets • sewn fly detail • back pocket • Jersey lined hand pockets • relaxed fit with tapered knee opening



PIGMENT BLACK PIGMENT MAROON



PIGMENT SLATE BLUE PIGMENT ALPINE GREEN



PIGMENT SANDSTONE PIGMENT LIGHT BLUE



PIGMENT MINT PIGMENT PINK



PIGMENT YELLOW PREPARED FOR DYE

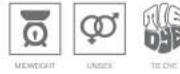


PRM4500TD

Unisex Midweight Tie Dye Hooded Pullover

Sizes: XS-3XL

9oz. (300gm) cotton/polyester blend fleece • 100% cotton 30 singles face yarn • jersey lined hood • split stitch double needle sewing on all seams • twill neck tape • 1x1 ribbing at cuffs and waistband • sewn eyelets • standard fit



PRM3500TD

Unisex Midweight Tie Dye Crew Neck

Sizes: XS-3XL

9oz. (300gm) cotton/polyester blend fleece • 100% cotton 30 singles face yarn • split stitch double needle sewing on all seams • twill neck tape • 1x1 ribbing at cuffs and waistband • standard fit



PRM50PTTD

Men's Tie Dye Fleece Pant

Sizes: XS-2XL



9oz (300 gm) cotton/polyester blend • 100% cotton 30 singles face yarn • elastic waistband with flat drawcord • 1x1 ribbing at ankle cuffs • sewn eyelets • sewn fly detail • back pocket • Jersey lined hand pockets • relaxed fit



TIE DYE BLACK

TIE DYE NAVY



TIE DYE AQUA BLUE

TIE DYE PINK



TIE DYE COTTON CANDY

TIE DYE SUNSET SWIRL



PRM50STTD

Men's Tie Dye Fleece Short

Sizes: XS-2XL



9oz (300 gm) cotton/polyester blend • 100% cotton 30 singles face yarn • elastic waistband with flat drawcord • sewn eyelets • sewn fly detail • back pocket & Jersey lined hand pockets • relaxed fit with tapered knee opening



TIE DYE BLACK



TIE DYE NAVY



PRM4500MW

Unisex Midweight Mineral Wash Hooded Pullover

Sizes: XS-3XL



9oz (300gm) cotton/polyester blend fleece • 100% cotton 30 singles face yarn • jersey lined hood • split stitch double needle sewing on all seams • twill neck tape • 1x1 ribbing at cuffs and waistband • sewn eyelets • standard fit



MINERAL WASH BLACK



PRM50PTMW

Men's Mineral Wash Fleece Pant

Sizes: XS-2XL



9oz (300 gm) cotton/polyester blend • 100% cotton 30 singles face yarn • elastic waistband with flat drawcord • 1x1 ribbing at ankle cuffs • sewn eyelets • sewn fly detail • back pocket • Jersey lined hand pockets • relaxed fit



MINERAL WASH BLACK



PRM50STMW

Men's Mineral Wash Fleece Short

Sizes: XS-2XL



9oz (300 gm) cotton/polyester blend • 100% cotton 30 singles face yarn • elastic waistband with flat drawcord • sewn eyelets • sewn fly detail • back pocket & Jersey lined hand pockets • relaxed fit with tapered knee opening



MINERAL WASH BLACK



Unisex Midweight French Terry Hooded Pullover

Sizes: XS-2XL

7.5oz. (250gm) pre-laundered cotton/polyester blend french terry • 32 singles face yarn for supreme printability and softness • unlined hood • split stitch double needle sewing • 1x1 ribbing at cuffs, waistband & side panels • antique nickel eyelets • two antique nickel tipped flat drawcords (one contrast + one dtm) • media pocket & eyelet in front pocket • thumbholes at cuffs • twill neck tape • slim unisex fit

Screen Printers Please Note:
This fabric is not made of 100% cotton face yarn.



Unisex Midweight French Terry Zip Hood

Sizes: XS-3XL

7.5oz. (250gm) pre-laundered cotton/polyester blend french terry • 32 singles face yarn for supreme printability and softness • unlined hood • split stitch double needle sewing • 1x1 ribbing at cuffs & waistband • antique nickel eyelets • antique nickel tipped flat drawcord • #5 antique nickel exposed zipper • media pocket & eyelet in front pocket • thumbholes at cuffs • twill neck tape • slim unisex fit

Screen Printers Please Note:
This fabric is not made of 100% cotton face yarn.



PRM33SBP

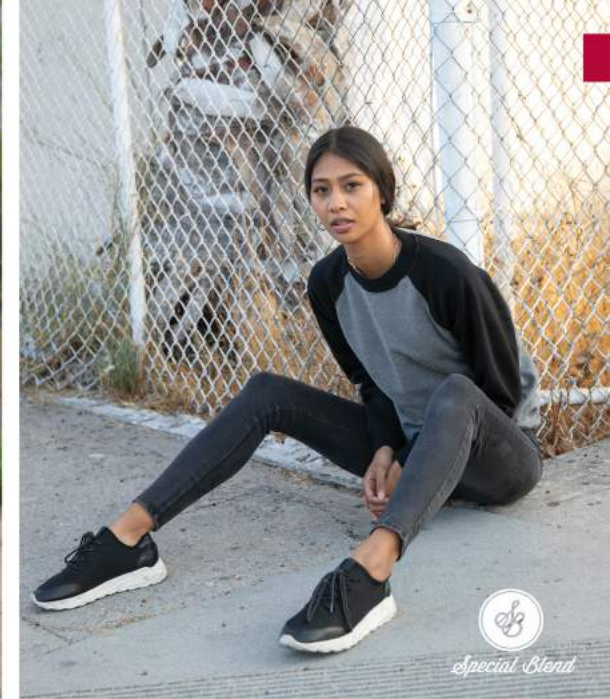
Unisex Midweight Special Blend Raglan Hooded Pullover

Sizes: XS-3XL

Boz (270gm) cotton/polyester blend • 30 singles cotton/polyester blend face yarn • raglan sleeves • unlined hood • reverse coverstitch sewing • twill neck tape • 1x1 ribbing at cuff, and waistband • sewn eyelets • self fabric side panel inserts • slim unisex fit
Screen Printers Please Note: This fabric is not made of 100% cotton face yarn.



- WEIGHT
- GENDER
- PRICE
- RAGLAN SLEEVES
- UNLINED HOOD
- TEAR-AWAY NECK LABEL
- SPECIAL BLEND FLEECE



PRM33SBZ

Unisex Midweight Special Blend Raglan Zip Hood
 Sizes: XS-3XL

8oz (270gm) cotton/polyester blend • 30 singles cotton/polyester blend face yarn • raglan sleeves • unlined hood • reverse coverstitch sewing • twill neck tape • 1x1 ribbing at cuff, and waistband • sewn eyelets • self fabric side panel inserts • #5 antique nickel kissing zipper • slim unisex fit
 Screen Printers Please Note: This fabric is not made of 100% cotton face yarn.



PRM30SBC

Unisex Midweight Special Blend Raglan Crew
 Sizes: XS-3XL

8oz (270gm) cotton/polyester blend • 30 singles cotton/polyester blend face yarn • raglan sleeves • reverse coverstitch sewing • twill neck tape • 1x1 ribbing at neck, cuff, and waistband • self fabric side panel inserts • slim unisex fit
 Screen Printers Please Note: This fabric is not made of 100% cotton face yarn.

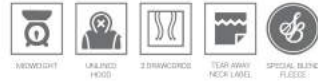


Women's Midweight Special Blend Hooded Pullover Dress

Sizes: XS-2XL

8oz (270gm) cotton/polyester blend fleece • unlined hood • split stitch double needle sewing • 1x1 ribbing at cuffs & waistband sewn eyelets • crossover neck • two drawcord colors • dtm twill neck tape • front pouch pocket • thumbholes at cuffs • slim fit

Screen Printers Please Note:
This fabric is not made of 100% cotton face yarn.



BLACK

CARBON

NICKEL

MAROON



Midweight Special Blend Blanket

One Size: 62" x 78"

8oz (270gm) cotton/polyester special blend fleece • 30 singles cotton/polyester blend face yarn • 1" self hem with double needle top stitch sewing on all four edges

Screen Printers Please Note:
This fabric is not made of 100% cotton face yarn.



BLACK

CARBON HEATHER

NICKEL HEATHER

MIDNIGHT HEATHER

PACIFIC HEATHER

POMEGRANATE HEATHER

SEA GREEN HEATHER

FOREST CAMO

RED BUFFALO PLAID



JERSEY
COLLECTION

Lightweight, ultra-soft & fleece alternative.



SS150JZ

SS150J

Men's Lightweight Jersey Hooded Pullover

Sizes: XS-3XL

4.5oz (150gm) cotton/polyester blend jersey • brick red & black are 100% cotton • 30 singles yarn • unlined hood • split stich double needle sewing • twill neck tape • 1x1 ribbing at cuffs & waistband • sewn eyelets • front pouch pocket • slim fit



BLACK

CHARCOAL HEATHER

GUNMETAL HEATHER

CLASSIC NAVY HEATHER

OLIVE

SS150JZ

Men's Lightweight Jersey Zip Hood

Sizes: XS-3XL

4.5oz (150gm) cotton/polyester blend jersey • brick red & black are 100% cotton • 30 singles yarn • unlined hood • split stitch double needle sewing • twill neck tape • 1x1 ribbing at cuffs & waistband • sewn eyelets • #5 dtm coil kissing zipper • front pouch pocket • slim fit



BLACK

CHARCOAL HEATHER

GUNMETAL HEATHER

CLASSIC NAVY HEATHER

OLIVE



Youth

COLLECTION

Quality, standard fit & popular colors.



PRM15YSB



PIGMENT DYED

EACH GARMENT HAS ITS OWN UNIQUE CHARACTER. WE ACCOMPLISH THIS WITH OUR SMALL BATCH HAND-PIGMENT DYEING PROCESS.



NEW PRM1500Y

Youth Midweight Pigment Dyed Hooded Pullover

Sizes: XS-XL

9oz. (300gm) cotton/polyester blend fleece • 100% cotton 30 singles face yarn • jersey lined hood • split stitch double needle sewing on all seams • twill neck tape • 1x1 ribbing at cuffs and waistband • standard fit



PIGMENT BLACK PIGMENT MAROON PIGMENT SLATE BLUE PIGMENT ALPINE GREEN PIGMENT SANDSTONE



PIGMENT LIGHT BLUE PIGMENT MINT PIGMENT PINK PIGMENT YELLOW



NEW PRM1500TD

Youth Midweight Tie Dye Hooded Pullover

Sizes: XS-XL

9oz. (300gm) cotton/polyester blend fleece • 100% cotton 30 singles face yarn • jersey lined hood • split stitch double needle sewing on all seams • twill neck tape • 1x1 ribbing at cuffs and waistband • standard fit



TIE DYE BLACK TIE DYE NAVY TIE DYE AQUA BLUE TIE DYE PINK



TIE DYE COTTON CANDY TIE DYE SUNSET SWIRL

SS4001Y

Youth Midweight Hooded Pullover

Sizes: S-XL

9.5 oz (280 gm) cotton/polyester blend fleece • 100% cotton 20 singles face yarn • split stitch double needle sewing on all seams • jersey lined hood • twill neck tape • 1x1 ribbing at cuffs & waistband • no drawcord • standard fit



SS4001YZ

Youth Midweight Zip Hood

Sizes: S-XL

9.5 oz (280 gm) cotton/polyester blend fleece • 100% cotton 20 singles face yarn • jersey lined hood • split stitch double needle sewing on all seams • twill neck tape • no drawcord • 1x1 ribbing at cuffs & waistband • #5 metal kissing zipper • standard fit



EXP24YWZ

Youth Lightweight Windbreaker Jacket

Sizes: XS-XL



82 gm 100% polyester lightweight water resistant fabric • matte finish eyelets and zippers • #4 zipper with zipper pull & rubber zipper pull tab • reversed zipper tape • fine mesh hood liner • three panel hood • blizzard neck • self neck tape • welt pockets with mesh pocket bags • tightening toggle at waistband • elastic cuffs • locker loop in center back neck





PRM15YSB

Youth Lightweight Special Blend Raglan Hooded Pullover
 Sizes: XS-XL

6.5oz (210gm) cotton/polyester blend • 32 singles cotton/polyester blend face yarn • raglan sleeves • unlined hood • split stitch double needle sewing • twill neck tape • 1x1 ribbing at cuff and waistband
 Screen Printers Please Note:
 This fabric is not made of 100% cotton face yarn.



PRM15YSBZ

Youth Lightweight Special Blend Raglan Zip Hood
 Sizes: XS-XL

6.5oz (210gm) cotton/polyester blend • 32 singles cotton/polyester blend face yarn • raglan sleeves • unlined hood • split stitch double needle sewing • twill neck tape • #5 dtm coil kissing zipper with nickel pull • 1x1 ribbing at cuff and waistband
 Screen Printers Please Note:
 This fabric is not made of 100% cotton face yarn.





Special Blend



Special Blend

PRM10TSB

Toddler Lightweight Special Blend Raglan Hooded Pullover

Sizes: 2T, 4T, 5/6

6.5oz (210gm) cotton/polyester blend • 32 singles cotton/polyester blend face yarn • raglan sleeves • unlined hood • split stitch double needle sewing • twill neck tape • 1x1 ribbing at cuff and waistband

Screen Printers Please Note:
This fabric is not made of 100% cotton face yarn



PRM10TSBZ

Toddler Lightweight Special Blend Raglan Zip Hood

Sizes: 2T, 4T, 5/6

6.5oz (210gm) cotton/polyester blend • 32 singles cotton/polyester blend face yarn • raglan sleeves • unlined hood • split stitch double needle sewing • twill neck tape • #5 dtm coil kissing zipper with nickel pull • 1x1 ribbing at cuff and waistband



BLACK NICKEL HEATHER MIDNIGHT HEATHER CRIMSON HEATHER MOSS HEATHER



NICKEL HEATHER/CARBON HEATHER CARBON HEATHER/BLACK NICKEL HEATHER/FOREST CAMO PACIFIC HEATHER POMEGRANATE HEATHER



BLACK NICKEL HEATHER MIDNIGHT HEATHER



NICKEL HEATHER/CARBON HEATHER CARBON HEATHER/BLACK PACIFIC HEATHER POMEGRANATE HEATHER

STYLE INDEX

INDEPENDENT



IND5000P Men's Premium Heavyweight Hooded Pullover 13 Colors / Pg. 13
IND5000C Men's Premium Heavyweight Crew 13 Colors / Pg. 15
IND4000 Men's Heavyweight Hooded Pullover 38 Colors / Pg. 17
IND4000Z Men's Heavyweight Zip Hood 12 Colors / Pg. 19
IND20PNT Men's Midweight Fleece Pant 14 Colors / Pg. 21

AFX



IND20SRT Men's Midweight Fleece Short 14 Colors / Pg. 22
IND40RP Men's Lightweight Raglan Hooded Pullover 8 Colors / Pg. 23
IND45UVZ Unisex Heavyweight Varsity Zip Hood 5 Colors / Pg. 24
INDDUFBag Day Tripper 29L Duffel Bag 10 Colors / Pg. 25
AFX64CRP Women's Lightweight Crop Hooded Pullover 8 Colors / Pg. 29
AFX24CRPC Women's Lightweight Crop Crew 8 Colors / Pg. 31
AFX90UN Unisex Lightweight Fitted Hooded Pullover 14 Colors / Pg. 33
AFX90UNZ Unisex Heavyweight Fitted Zip Hood 16 Colors / Pg. 35
AFX4000 Men's Lightweight Fitted Hooded Pullover 10 Colors / Pg. 37

EXPEDITION



AFX4000Z Men's Lightweight Fitted Zip Hood 5 Colors / Pg. 38
EXP54LWP Men's Lightweight Windbreaker 8 Colors / Pg. 41
EXP54LWZ Men's Lightweight Windbreaker Jacket 19 Colors / Pg. 43
EXP64CRP Women's Lightweight Pullover Crop Windbreaker 4 Colors / Pg. 45
EXP52BMR Men's Lightweight Bomber Jacket 3 Colors / Pg. 47
EXP50F Men's Flannel Shirt 4 Colors / Pg. 49
EXP550Z Men's Canvas Workwear Jacket 2 Colors / Pg. 51
EXP560V Men's Canvas Workwear Vest 2 Colors / Pg. 52
EXP100PFZ Men's Hyper-Loft Puffy Jacket 1 Color / Pg. 53



EXP120PWF Men's Hyper-Loft Puffy Vest 1 Color / Pg. 53
EXP200PFZ Women's Hyper-Loft Puffy Jacket 1 Color / Pg. 54
EXP220PFV Women's Hyper-Loft Puffy Vest 1 Color / Pg. 54
EXP95NB Men's Heavyweight Windbreaker Jacket 5 Colors / Pg. 55
EXP99CNB Men's Heavyweight Windbreaker Coaches Jacket 5 Colors / Pg. 56
EXP94NAW Men's Water Resistant Windbreaker Anorak Jacket 5 Colors / Pg. 57
EXP35SSZ Men's Poly-Tech Soft Shell Jacket 3 Colors / Pg. 59
EXP80PTZ Men's Heavyweight Poly-Tech Zip Hood 1 Color / Pg. 60
EXP70PTZ Unisex Lightweight Poly-Tech Zip Track Jacket 5 Colors / Pg. 61

STANDARD SUPPLY



EXP60PAZ Women's Lightweight Poly-Tech Zip 6 Colors / Pg. 62
EXP90SHZ Unisex Heavyweight Sherpa Lined Heathered Zip Hood 6 Colors / Pg. 63
EXP40SHZ Men's Heavyweight Sherpa Lined Zip Hood 1 Color / Pg. 64
SS4500 Men's Midweight Hooded Pullover 36 Colors / Pg. 67
SS4500Z Men's Midweight Zip Hood 16 Colors / Pg. 69
SS3000 Men's Midweight Crew Neck 21 Colors / Pg. 71
SS1000 Unisex Lightweight Hooded Pullover 12 Colors / Pg. 73
SS1000Z Unisex Lightweight Loopback Terry Zip Hood 12 Colors / Pg. 75
SS1000C Unisex Lightweight Loopback Terry Crew 12 Colors / Pg. 77

PREMIUM



SS008 Women's Midweight Hooded Pullover 4 Colors / Pg. 79
SS650 Women's Lightweight Hooded Pullover 7 Colors / Pg. 81
SS650Z Women's Lightweight Zip Hood 7 Colors / Pg. 83
SS240 Women's Lightweight Crew 6 Colors / Pg. 85
PRM2500 Women's California Wave Wash Hooded Pullover 9 Colors / Pg. 89
PRM2500Z Women's California Wave Wash Zip Hood 7 Colors / Pg. 91
PRM2000 Women's California Wave Wash Crew 7 Colors / Pg. 92
PRM20PNT Women's California Wave Wash Fleece Pant 9 Colors / Pg. 93
PRM20SRT Women's California Wave Wash Fleece Short 9 Colors / Pg. 95



PRM4500 Unisex Midweight Pigment Dyed Hooded Pullover 17 Colors / Pg. 97
PRM3500 Unisex Midweight Pigment Dyed Crew Neck 17 Colors / Pg. 99
PRM50PTD Men's Pigment Dyed Fleece Pant 10 Colors / Pg. 101
PRM50STPD Men's Pigment Dyed Fleece Short 10 Colors / Pg. 102
PRM4500TD Unisex Midweight Tie Dye Hooded Pullover 8 Colors / Pg. 103
PRM3500TD Unisex Midweight Tie Dye Crew Neck 8 Colors / Pg. 104
PRM50PTD Men's Tie Dye Fleece Pant 6 Colors / Pg. 105
PRM50STTD Men's Tie Dye Fleece Short 2 Colors / Pg. 106
PRM4500MW Unisex Midweight Mineral Wash Hooded Pullover 1 Color / Pg. 107



PRM50PTMW Men's Mineral Wash Fleece Pant 1 Color / Pg. 109
PRM50STMW Men's Mineral Wash Fleece Short 1 Color / Pg. 110
PRM90HT Unisex Midweight French Terry Hood 10 Colors / Pg. 111
PRM90HTZ Unisex Midweight French Terry Zip Hood 11 Colors / Pg. 112
PRM33SBP Unisex Midweight Special Blend Raglan Hooded Pullover 15 Colors / Pg. 113
PRM33SBZ Unisex Midweight Special Blend Raglan Zip Hood 14 Colors / Pg. 115
PRM30SBC Unisex Midweight Special Blend Raglan Crew 14 Colors / Pg. 116
PRM65DRS Women's Midweight Special Blend Hooded Pullover Dress 4 Colors / Pg. 117
INDBKTSB Midweight Special Blend Blanket 9 Colors / Pg. 118

JERSEY



SS150J Men's Lightweight Jersey Hooded Pullover 5 Colors / Pg. 121
SS150JZ Men's Lightweight Jersey Zip Hood 5 Colors / Pg. 122

YOUTH



PRM1500Y Youth Midweight Pigment Dyed Hooded Pullover 9 Colors / Pg. 125
PRM1500TD Youth Midweight Tie Dye Hooded Pullover 6 Colors / Pg. 126
SS4001Y Youth Midweight Hooded Pullover 13 Colors / Pg. 127
SS4001YZ Youth Midweight Zip Hood 10 Colors / Pg. 127
EXP24YWZ Youth Lightweight Windbreaker Jacket 4 Colors / Pg. 128
PRM15YSB Youth Lightweight Special Blend Raglan Hooded Pullover 10 Colors / Pg. 129
PRM15YSBZ Youth Lightweight Special Blend Raglan Zip Hood 7 Colors / Pg. 130



PRM10TSB Toddler Lightweight Special Blend Raglan Hooded Pullover 10 Colors / Pg. 131
PRM10TSBZ Toddler Lightweight Special Blend Raglan Zip Hood 7 Colors / Pg. 132



COLOR SWATCH LIBRARY

BASIC FLEECE



BASIC FLEECE (CONTINUED)



LOOPBACK TERRY

SS1000 • SS1000C • SS1000Z



CALIFORNIA WAVE WASH

PRM2000 • PRM2500 • PRM2502 • PRM20PNT • PRM20SRT



SPECIAL BLEND

PRM303BC • PRM333BP • PRM333BZ • PRM10T3B • PRM10T5BZ • PRM10Y5B • PRM10Y5BZ • PRM10YVNT • PRM10Y5RT • PRM11TPT • PRM11T5RT • IND0KTSB



PIGMENT DYE

PRM3500 • PRM4500 • PRM50PTD • PRM50STPD



PIGMENT BLACK (PMS BLACK 7 C) PIGMENT MAROON (PMS 4985 C) PIGMENT SLATE BLUE (PMS 647 C) PIGMENT ALPINE GREEN (PMS 5545 C) PIGMENT SANDSTONE (PMS 7503 C) PIGMENT LIGHT BLUE (PMS 7453 C) PIGMENT MINT (PMS 563 C) PIGMENT PINK (PMS 190 C) PIGMENT YELLOW (PMS 1205 C)



PIGMENT AMBER (1675 C) PIGMENT PLUM (4284 C) PIGMENT CLAY (2328 C) PIGMENT CEMENT (4270 C) PIGMENT SAGE (5517 C) PIGMENT DUSTY PINK (7605 C) PIGMENT IVORY (4240 C)

TIE DYE

PRM3500TD • PRM4500TD • PRM50PTD • PRM50STD • AFX64CRP • AFX24CRPC



TIE DYE BLACK TIE DYE NAVY TIE DYE AQUA BLUE TIE DYE PINK TIE DYE DUSTY PINK TIE DYE OLIVE TIE DYE COTTON CANDY TIE DYE SUNSET SWIRL

MINERAL WASH

PRM4500MW • PRM50PTMW • PRM50STMW



MINERAL WASH BLACK

WATER RESISTANT SOFT SHELL

EXP35SSZ



BLACK (PMS BLACK C) GRAPHITE (PMS 432 C) CLASSIC NAVY (PMS 5395 C)

WATER RESISTANT POLY-TECH

EXP60PAZ • EXP70PTZ • EXP80PTZ



BLACK (PMS BLACK C) SOLID CHARCOAL (PMS 431 C) CLASSIC GREY (PMS COOL GREY 10 C) GUNMETAL HEATHER (PMS 424 C) WHITE CLASSIC NAVY (PMS 5395 C) CLASSIC ROYAL (PMS 287 C) ASTER BLUE (PMS 300 C) LAPIS GREEN (PMS 326 C)



CORAL (PMS 191 C) BRICK RED (PMS 201 C)

LIGHTWEIGHT WINDBREAKER

EXP54LWP • EXP54LWZ • EXP52BMR • EXP64CRP



SMOKE (COOL GREY 1 C) GRAPHITE (PMS 432 C) BLACK (PMS BLACK C) CLASSIC NAVY (PMS 5395 C) ROYAL (PMS 287 C) MAROON (PMS 490 C) RED (PMS 200 C) ARMY (PMS 5743 C) SADDLE (PMS 2319 C)



CLASSIC KHAKI (13-0607 TPX) AQUA (PMS 550 C) BLUSH (PMS 196 C) SAFETY YELLOW (13-0443 TCX) SAFETY ORANGE (16-1364 TCX) FOREST CAMO BLACK CAMO WHITE CAMO

WATER RESISTANT NYLON

EXP95NB • EXP99CNB • EXP94NWR



BLACK (PMS BLACK C) GRAPHITE (PMS 432 C) CLASSIC NAVY (PMS 5395 C) CARDINAL (PMS 209 C) FOREST GREEN (19-5513 TPX) CLASSIC KHAKI (13-0607 TPX) FOREST CAMO BLACK CAMO

WATERPROOF POLYESTER

INDDIFBAG



BLACK (PMS BLACK C) BLACK / CHECKER STRAP POLKA DOT CHEETAH BLACK CHEETAH SOUTHWEST TIGER CAMO FOREST CAMO BLACK CAMO



WHITE CAMO

FLANNEL

EXP50F



CHARCOAL HEATHER / BLACK (PMS 433 C) GREY HEATHER / BLACK (PMS 429 C) OLIVE / BLACK (PMS 4218 C) RED / BLACK (PMS 207 C)

CANVAS WORKWEAR

EXP550Z • EXP560V



BLACK (PMS BLACK C) SADDLE (PMS 2319 C)



HEADQUARTERS

1341 Calle Avanzado
San Clemente, CA 92673

toll free: 877.366.9911
phone: 949.366.9911
fax: 949.366.5488
info@independenttradingco.com

WEST COAST DISTRIBUTION

4150 North Palm St., Fullerton, CA 92835

EAST COAST DISTRIBUTION

1511 N. Park Drive, Hazle Township, PA 18202

U.S. DISTRIBUTORS

S&S ACTIVEWEAR



Nevada, Georgia, Illinois,
Kansas, New Jersey, Texas
toll free: 800.523.2155
phone: 630.679.9940
fax: 630.679.9941
ssactivewear.com

MISSION IMPRINTABLES



California
San Diego, Ca
phone: 800.480.0800
missionimprintables.com

SUN APPAREL



California, Hawaii,
Kentucky, Nevada
phone: 877.478.6364
www.sun-apparel.com

TSF SPORTSWEAR



Florida, Alabama, Texas
phone: 800.331.1067
www.tsfsportswear.com

SLC ACTIVEWEAR



Utah
phone: 888.557.0799
www.slcactivewear.com

INTERNATIONAL DISTRIBUTORS

AUSTRALIA



CHAPTER 2
DISTRIBUTION
phone: (07) 3990 7430
www.chapter2dist.com

BRAZIL



BLANKS CO.
cep: 04552-100
55 001 2679 8090
Contato@Blankco.com.br
www.blankco.com.br

CANADA



PRIVATE AGENT DND
phone: 450.356.3440
info@privateagentdnd.com
www.privateagentdnd.com

CANADA



S&S CANADA
phone: (800) 711-1600
en-ca.ssactivewear.com

EUROPE



L-SHOP-TEAM GmbH
info@l-shop-team.de
www.l-shop-team.de

JAPAN



VIA TRANSPORTS
phone: 03 3792 4116
sales@anytees.com
www1.anytees.com

MEXICO



DIMEO CLOTHING
COMPANY
phone: 01(800) 822-2285 01
(33) 3628 8825 /
3628 8866 / 3634 8035 /
3634 8646
direccion@dimeo.mx
www.dimeo.mx

UNITED KINGDOM



BUFFALO TRADING
phone: 020-8998-5978
contact@buffalotrading.
co.uk

@Independenttradingcompany

/IndependentTradingCompany

@indytradingco

Independent Trading Company



INDEPENDENT TRADING COMPANY

Quality Sweatshirts.

2022