

- CONNECT **SWITCH CONNECTION A1** TO **MOTOR POST # 2**
- CONNECT **SWITCH CONNECTION A2** TO **MOTOR POST # 1**

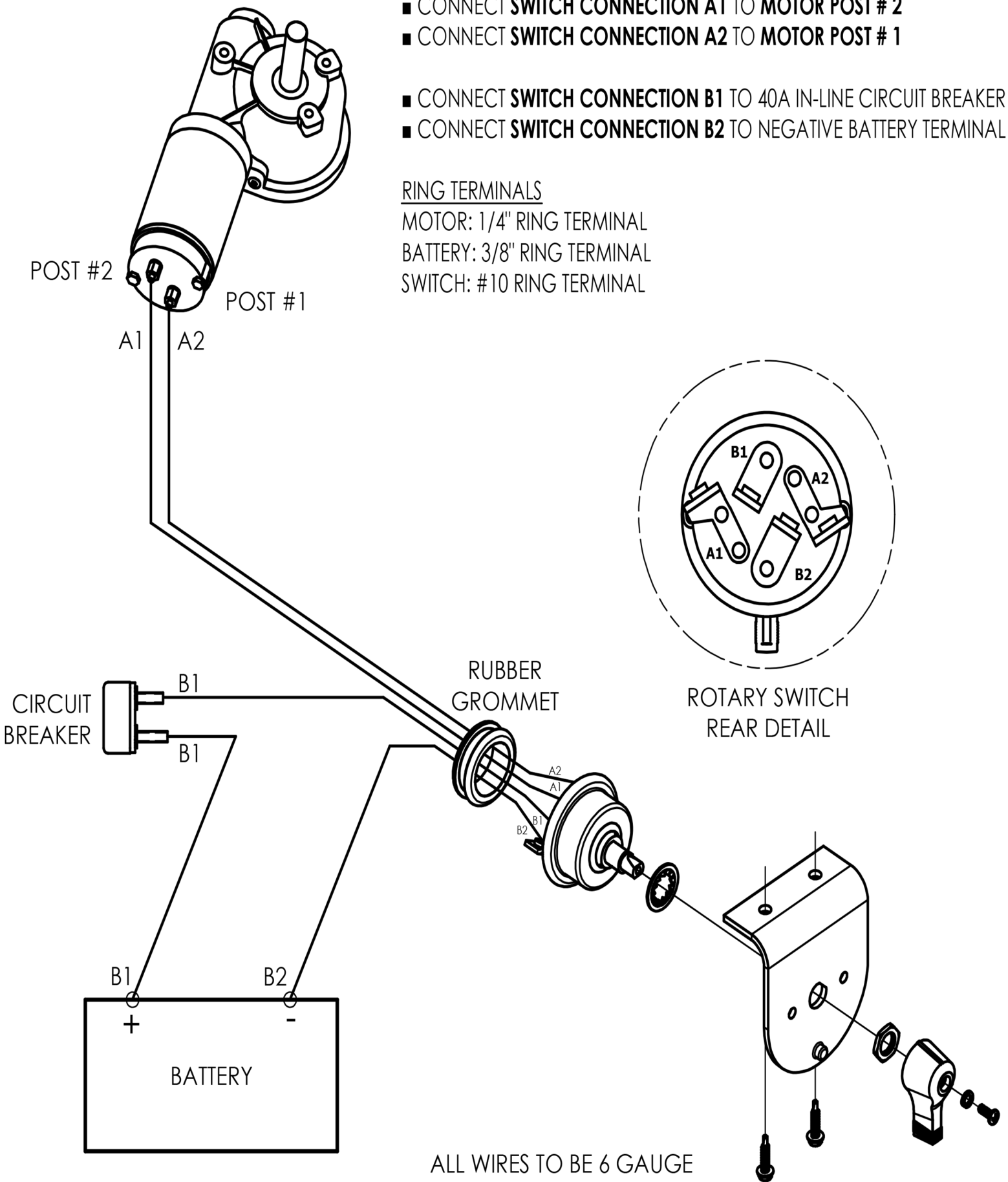
- CONNECT **SWITCH CONNECTION B1** TO **40A IN-LINE CIRCUIT BREAKER**
- CONNECT **SWITCH CONNECTION B2** TO **NEGATIVE BATTERY TERMINAL**

RING TERMINALS

MOTOR: 1/4" RING TERMINAL

BATTERY: 3/8" RING TERMINAL

SWITCH: #10 RING TERMINAL



ALL WIRES TO BE 6 GAUGE

IMPORTANT: WIRE EXACTLY PER DIAGRAM.
DO NOT WIRE ANY ACCESSORIES TO ROTARY SWITCH.