

ellia®

CADENCE ULTRASONIC
WIFI DIFFUSER

ARM-950WT-AU | QS-ARM950WTAU



www.ellia.com.au

For more information about the
Ellia range visit us online.

READ ALL INSTRUCTIONS BEFORE USE. SAVE THESE INSTRUCTIONS FOR FUTURE REFERENCE.

IMPORTANT SAFEGUARDS

WHEN USING ELECTRICAL PRODUCTS, ESPECIALLY WHEN CHILDREN ARE PRESENT, BASIC SAFETY PRECAUTIONS SHOULD ALWAYS BE FOLLOWED, INCLUDING THE FOLLOWING:

- **ALWAYS** unplug the appliance from the electrical outlet immediately after using and before cleaning. To disconnect, turn all controls to the 'OFF' position, then remove plug from outlet.
- **NEVER** leave an appliance unattended when plugged in. Unplug from the mains outlet when not in use and for putting on or taking off parts or attachments.
- This appliance is not intended for use by persons (including children) with reduced physical, sensory or mental capabilities, or lack of experience and knowledge, unless they have been given supervision or instruction concerning use of the appliance by a person responsible for their safety. Children should be supervised to ensure that they **DO NOT** play with the appliance. Cleaning and user maintenance shall not be made by children without supervision.
- **DO NOT** reach for an appliance that has fallen in water or other liquids. Switch off at the mains and unplug it immediately.
- **DO NOT** operate in wet or moist conditions.
- **NEVER** insert pins or other metallic fasteners into the appliance.
- Use this appliance for the intended use as described in this booklet.
- **DO NOT** use attachments not recommended by Homedics.
- **NEVER** operate the appliance if it has a damaged cord or plug, if it is not working properly, if it has been dropped or damaged, or dropped into water. Return it to the Homedics Service Centre for examination and repair.
- Keep cord away from heated surfaces and fires.
- Excessive use could lead to the product's excessive heating and shorter life. Should this occur, discontinue use and allow the unit to cool before operating.
- **NEVER** drop or insert any object into any opening.
- **DO NOT** operate where aerosol (spray) products are being used or where oxygen is being administered.

- **DO NOT** carry this appliance by the cord or use cord as a handle.
- **DO NOT** use outdoors.
- **DO NOT** crush.
- This product requires input of 24V DC, 0.5 A and always use the adaptor supplied with this product.
- **DO NOT** attempt to repair the appliance.
- There are no user serviceable parts.
- For service, send to a Homedics Service Centre. All servicing of this appliance must be performed by authorised

Homedics service personnel only.

- **NEVER** block the air openings of the appliance or place it on a soft surface, such as a bed or couch. Keep air openings free of lint, hair etc.
- **DO NOT** place or store appliance where it can fall or be pulled into a bath or sink.
- **DO NOT** place in or drop into any liquids.
- Failure to follow the above may result in the risk of fire or injury.
- Burns can result from improper use.

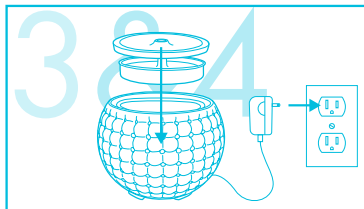
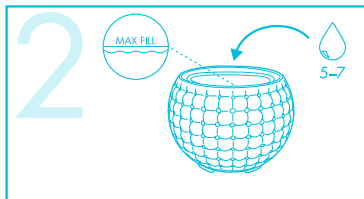
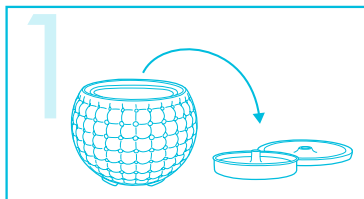
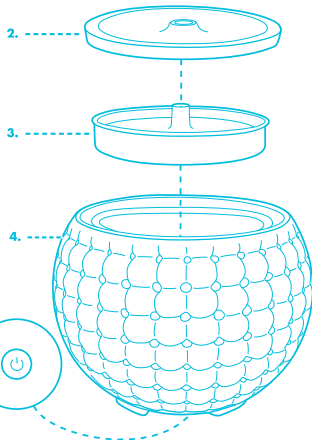
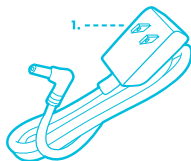
SAFETY CAUTIONS

PLEASE READ THIS SECTION CAREFULLY BEFORE USING THIS APPLIANCE.

- **DO NOT** use while bathing or in shower
- **DO NOT** operate in a wet or moist condition.
- **DO NOT** use water above 30°C.
- Use this appliance only for its intended use as described in this manual.
- **ALWAYS** place the diffuser on a firm, at, level surface.
- **NEVER** use diffuser in an environment where explosive gases are present.
- **DO NOT** place the diffuser near heat sources, such as a stove and **DO NOT** expose the diffuser to direct sunlight.
- To disconnect, turn all controls to the "OFF" position, then remove plug from outlet.
- This appliance is designed for personal, non-professional use only.
- **DO NOT** overfill with water.
- **NEVER** use detergent to clean the diffuser that is not recommended by the manufacturer.
- **NEVER** scrape the diffuser with a hard object to clean.
- If the supply cord is damaged, it must be replaced by the manufacturer, its service agent or similarly qualified persons in order to avoid a hazard.

INSTRUCTIONS FOR USE

1. Adaptor
2. Outer Cover
3. Inner Cover
4. Diffuser Base
5. Power Button



MANUAL DIFFUSER INSTRUCTIONS (USING WITHOUT ELLIA APP)

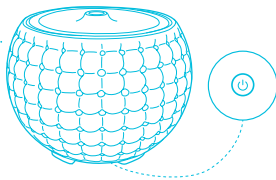
Power Button:

Press  once to turn on aroma mist and colour-changing light.

Press again to turn the light off.

Press a third time to turn the mist off.

1. (Fig 1) Remove outer cover from the base. Next, remove the inner cover.
2. (Fig 2) Pour water into the reservoir, ensuring you do not fill above the max line. Then add 5–7 drops of essential oil to the water. For optimal mist delivery, we recommend filling this unit with 200ml of water (using the measuring cup provided).
3. (Fig 3&4) Put the inner and outer covers back on.
4. (Fig 3&4) Plug the adapter into the diffuser, then plug the adapter into an outlet.
5. Press button to start diffuser mist.



NOTE: To use all the Features you will need to download the Ellia app.

Aroma mist:

Your diffuser has 2 mist options. Press  once for continuous mist, which will run for up to 10 hours. Press again for intermittent mist (30 seconds on, 30 seconds off), which will run for up to 20 hours. Press a third time to turn the mist off. When your diffuser runs out of water, it will automatically shut off.

To clean: Wipe reservoir with a soft, damp cloth every 2 weeks. See the full user guide online for more details.

HOW TO DOWNLOAD APP

1. Find the Ellia app on the App Store or Google Play (see Troubleshoot if not able to find app).
2. Download Ellia app.
3. Create account with new user name and password.
4. Press power button icon  and find mist options , colour-changing light , light brightness , and  music features throughout the app.

Colour-changing light:

Click the light icon  on the toolbar to select a colour.

Light brightness:

Click the light icon  on the toolbar, and adjust your lighting experience with the dimmer toggle.

Music:

Click the music icon  on the toolbar, and scroll through the Cadence music playlist. Select a song to start playing.

Volume:

Control the volume up or down through the Ellia app.



TROUBLESHOOTING


Ellia App Search

Follow app page link below if not able to find in app Store® search or Google Play search.

<https://apps.apple.com/us/app/ellia/id6443751418>

<https://play.google.com/store/apps/details?id=com.homedics.au>

Cadence Diffuser

PROBLEM	CAUSE	SOLUTION
No Steam	The power supply isn't connected.	Plug it in and press  button.
	There is not enough water in the diffuser's tank.	Fill the water tank up to the indicated maximum level (200ml).
	The water level is above the maximum level indicated in the tank (200ml).	Dump the redundant water.
	The steam outlet is blocked.	Clean the air outlet.

CLEANING AND CARE

1. Before cleaning the unit, turn the power off and make sure the adapter is unplugged from the diffuser and outlet.
2. Remove the outer cover from the base. Next, remove the inner cover.
3. Carefully pour any remaining water and essential oil out of the reservoir, from the drain side, opposite the air outlet. Be sure not to empty the reservoir near the air outlet in order to avoid malfunction.

TO CLEAN THE SURFACE

- Clean the surface of your diffuser with a clean, damp, soft cloth as often as needed.
- To Clean the Reservoir and Ultrasonic Membrane, it's recommended to wipe the reservoir with a clean, damp, soft cloth at least once every 2 weeks.

NOTE: Depending on your usage, and the amount of essential oil you use, you may want to clean the reservoir and ultrasonic membrane more frequently for best performance.

For the most thorough clean, pour a 50/50 mixture of vinegar and water into the reservoir, then soak for five minutes. Brush reservoir walls, base, and ultrasonic membrane clean with a soft-bristle brush (not included) and rinse. Never touch the ultrasonic membrane with your fingers, as the natural oils in skin can damage the membrane.

- Clean the membrane once every two to three weeks, depending on your usage.
- Clean and dry the unit before extended periods of inactivity.

MAINTENANCE

- **DO NOT** repair or adjust the unit. Servicing must be performed by professional or qualified personnel.
- **DO NOT** operate any appliance with an aging, knotted or damaged cord or plug, the replacement must be performed by the manufacturer, service center or qualified professional personnel.
- Stop use if there is an unusual noise or smell. Servicing should be performed by qualified personnel only.
- Diffuser should be unplugged when not in use for a long period of time.
- **DO NOT** touch the water in the main unit or the parts in the water when the unit is on.
- **NEVER** operate unit without water in the tank. Only use water in the tanks.
- **NEVER** add any additive to the water that is not produced or under the supervision of the manufacturer.
- **DO NOT** wash, adjust or move the diffuser without first unplugging the unit from its electrical outlet.

TECHNICAL SPECIFICATIONS

MODEL: ARM-950WT-AU
QS-ARM950WTAU

TANK CAPACITY: 200ml

POWER SUPPLY: 24V DC, 500mA

ARM-950WT-AU | ©2022 Homedics, LLC.
QS-ARM950WTAU

All rights reserved.

Ellia is a registered trademark of Homedics, LLC.

Made in China





1-YEAR LIMITED WARRANTY

We or us means Homedics Australia Pty Ltd ACN 31 103 985 717 and our contact details are set out at the end of this warranty;

You means the purchaser or the original end-user of the Goods. You may be a domestic user or a professional user;

Supplier means the authorised distributor or retailer of the Goods that sold you the Goods in Australia and New Zealand; and

Goods means the product or equipment which was accompanied by this warranty and purchased in Australia and New Zealand.

For Australia:

Our Goods come with guarantees that cannot be excluded under the Australian Consumer Law. You are entitled, subject to the provisions of the Australian Consumer Law, to a replacement or refund for a major failure and for compensation for any other reasonably foreseeable loss or damage. You are also entitled, subject to the provisions of the Australian Consumer Law, to have the Goods repaired or replaced if the goods fail to be of acceptable quality and the failure does not amount to a major failure. This is not a complete statement of your legal rights as a consumer.

For New Zealand:

Our Goods come with guarantees that cannot be excluded under the Consumer Guarantees Act 1993. This guarantee applies in addition to the conditions and guarantees implied by that legislation.

The Warranty

Homedics sells its products with the intent that they are free of defects in manufacture and workmanship under normal use and service. In the unlikely event that your Homedics product proves to be faulty within 1 year from the date of purchase due to workmanship or materials only, we will replace it at our own expense, subject to the terms and conditions of this guarantee. The warranty period is limited to 3 months from the date of purchase for products used commercially/professionally.

Terms and Conditions:

In addition to the rights and remedies that you have under the Australian Consumer Law, Consumer Guarantees Act of New Zealand or any other applicable law and without excluding such rights and remedies warranty against defects:

1. The Goods are designed to withstand the rigours of normal household use and are manufactured to the highest standards using the highest quality components. Whilst unlikely, if, during the first 12 months (3 months commercial use) from their date of purchase from the Supplier (Warranty Period), the Goods prove defective by reason of improper workmanship or materials and none of your statutory rights or remedies apply, we will replace the Goods, subject to the terms and conditions of this warranty.
2. We have to replace the Goods under this Additional Warranty if the Goods have been damaged due to misuse or abuse, accident, the attachment of any unauthorised accessory, alteration to the product,

improper installation, unauthorised repairs or modifications, improper use of electrical/power supply, loss of power, malfunction or damage of an operating part from failure to provide manufacturer's recommended maintenance, transportation damage, theft, neglect, vandalism, environmental conditions or any other conditions whatsoever that are beyond the control of Homedics.

3. This Warranty does not extend to the purchase of used, repaired or second-hand products or to products not imported or supplied by Homedics Australia Pty Ltd, including but not limited to those sold on offshore internet auction sites.
4. This Warranty extends only to consumers and does not extend to Suppliers.
5. Even when we have to replace the Goods, we may decide to do so anyway. In some cases, we may decide to substitute the Goods with a similar alternative product of our choosing. All such decisions are at our absolute discretion.
6. All such replaced or substituted Goods continue to receive the benefit of this Additional Warranty for the time remaining on the original Warranty Period (or three months, whichever is the longest).
7. This Additional Warranty does not cover items damaged by normal wear and tear including but not limited to

chips, scratches, abrasions, discolouration and other minor defects, where the damage has negligible effect on the operation or performance of the Goods.

8. This Additional Warranty is limited to replacement or substitution only. As far as the law permits, we will not be liable for any loss or damage caused to property or persons arising from any cause whatsoever and shall have no liability for any incidental, consequential, or special damages.
9. This warranty is only valid and enforceable in Australia and New Zealand.

Making a Claim:

In order to claim under this Warranty, you must return the Goods to the Supplier (place of purchase) for replacement. If this is not possible, please contact our Customer Service department by email: cservice@homedics.com.au or at the address below.

- All returned Goods must be accompanied by satisfactory proof of purchase which clearly indicates the name and address of the Supplier, the date and place of purchase and identifies product. It is best to provide an original, legible, and unmodified receipt or sales invoice.
- You must bear any expense for return of the Goods or otherwise associated with making your claim under this Additional Warranty.

DISTRIBUTED BY

AUSTRALIA: Homedics Australia Pty Ltd, 14 Kingsley Close, Rowville, VIC 3178 | Phone: (03) 8756 6500

NEW ZEALAND: CDB Media Ltd, 4 Lovell Court, Albany, Auckland, New Zealand 0800 232 633

Contact Homedics Customer Service at:

Email: cservice@homedics.com.au



DISTRIBUTED BY

**AUSTRALIA: Homedics Australia Pty Ltd, 14 Kingsley Close,
Rowville, VIC 3178 | Phone: (03) 8756 6500**

**NEW ZEALAND: CDB Media Ltd, 4 Lovell Court, Albany, Auckland,
New Zealand 0800 232 633**