

Notes:

- Maximum Electric Current:

AWG	6		
AMP	95		
- Maximum Electric Rating: 75°C 2000 Volts Max
- Terminal Material: Copper
- Wire Range: 6 AWG (14mm²)
- Terminal Surface Treatment: Tin Plated
- Terminal Thickness: 1.50mm

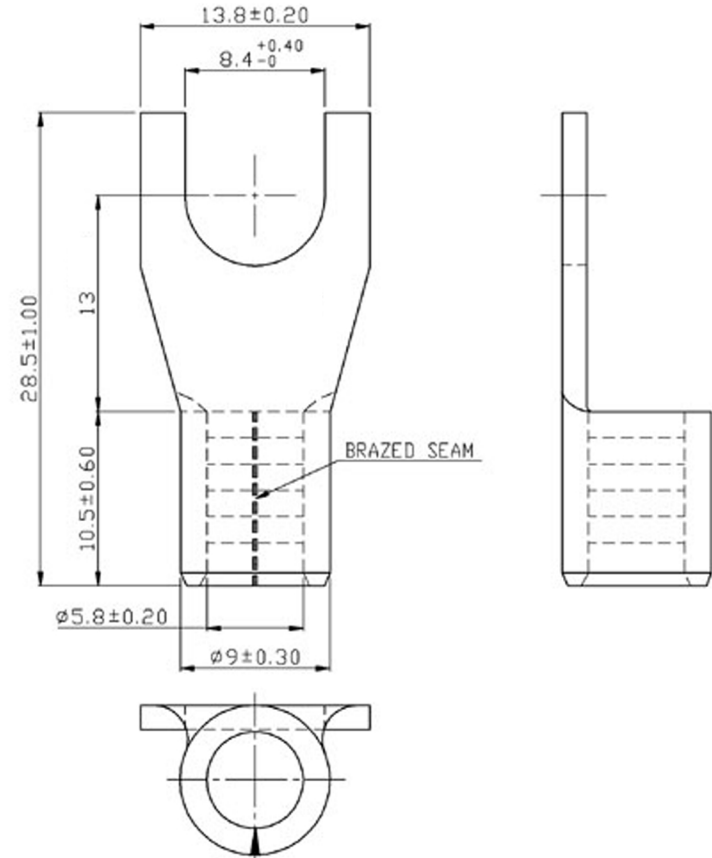
Standard (Metric)

- 1.12" (28.5mm)
- 0.51" (13mm)
- 0.41" (10.5mm)
- 0.54" (13.8mm)
- 0.33" (8.4mm)
- 0.23" (5.8mm)
- 0.35" (9mm)

Tolerances

(Unless Otherwise Specified)

CATEGORY	Non Insulated Fork Terminals	SCALE	3/1
PART #	SNB14-8	SHEET	1-3
MATERIAL	Tin-Plated Copper	PAGE	10F2



FerrulesDirect