

Notes:

- Maximum Electric Current:

AWG	12	10	
AMP	35	50	
- Maximum Electric Rating: 105°C 600 Volts Max
- Insulation Material: Nylon
- Insulation Color: Yellow
- Terminal Material: Copper
- Wire Range: 12-10 AWG (4-6mm²)
- Terminal Surface Treatment: Tin Plated
- Terminal Thickness: 1.00mm
- Double Crimp: With Copper Sleeve On Barrel

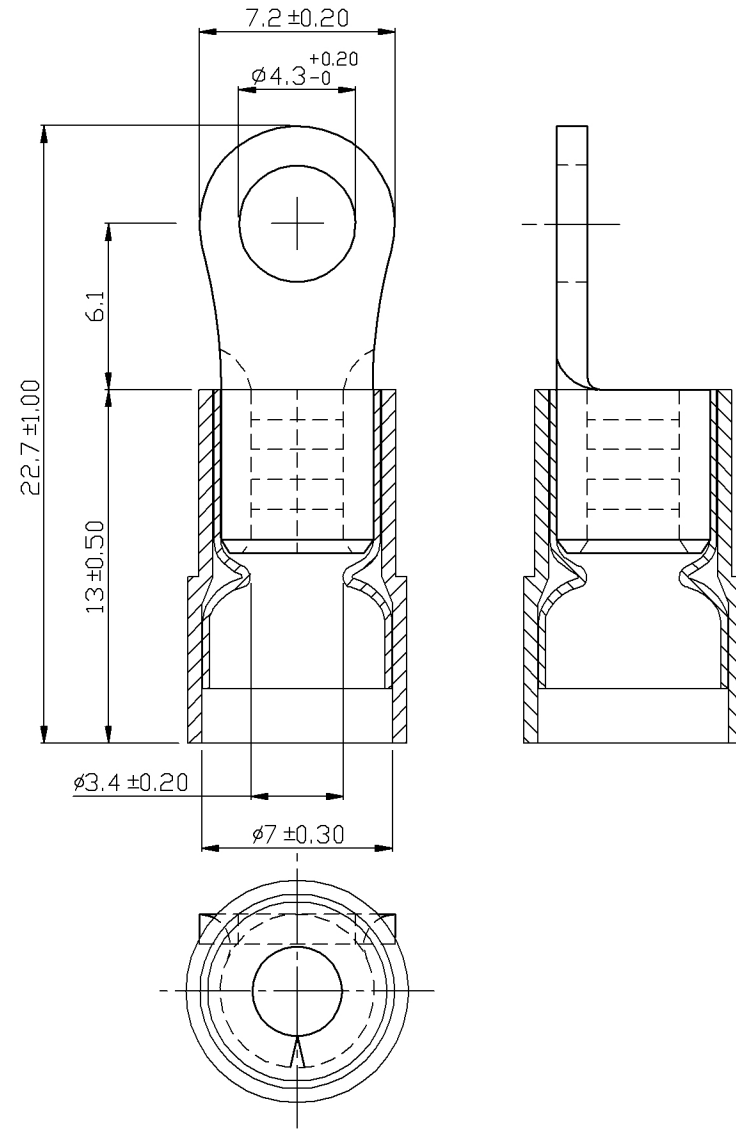
Standard (Metric)

- 0.89" (22.7mm)
- 0.24" (6.1mm)
- 0.51" (13mm)
- 0.28" (7.2mm)
- 0.17" (4.3mm)
- 0.13" (3.4mm)
- 0.28" (7mm)

Tolerances

(Unless Otherwise Specified)

CATEGORY	Nylon Ring Terminals - Double Crimp	SCALE	4/1
PART #	RNYDS5-4	SHEET	1-2
MATERIAL	Tin-Plated Copper	PAGE	10F2



FerrulesDirect